

TALLAHATCHIE COUNTY, MS 300+/- ACRE HUNTER'S PARADISE



\$775,000

[CLICK HERE FOR DRONE LINK](#)



Can you say game refuge? You have just found one of the finest properties for deer and duck in the Mississippi Delta! This 300± acre Tallahatchie County tract features established food plots with shooting houses and is surrounded by 20+ year old WRP producing tons of acorns for the game. The property itself is surrounded by thousands of acres of row crop ground, so it is the primary bedding area and habitat for miles. The duck impoundment is levered and has structure with gate, providing outstanding duck hunting. The road system is superb and serves as additional food plots. The shooting houses will test your long range shooting ability. I have seen many outstanding hunting tracts in my days, but this one is something special! If you are looking for additional land, a 200± acre parcel is to the south and can be purchased along with the cabin/lodge that is located 1/2 mile down the road. Drop what you are doing and call Tom to schedule your viewing of this jewel in the Mississippi Delta!



Call The Land Man Today!

TOM SMITH, ALC®, BROKER

Tom@TomSmithLand.com

601.898.2772 **office** | 601.454.9397 **cell**

112 Village Blvd, Madison, MS 39110



Expect More. Get More.

TomSmithLandandHomes.com

Information is believed to be accurate but not guaranteed.



TOM SMITH, ALC®, BROKER
 Tom@TomSmithLand.com
 601.898.2772 office | 601.454.9397 cell



TomSmithLandandHomes.com

Information is believed to be accurate but not guaranteed.



 [CLICK PHOTO](#)



TOM SMITH, ALC®, BROKER
Tom@TomSmithLand.com
601.898.2772 **office** | 601.454.9397 **cell**



Expect More. Get More.

TomSmithLandandHomes.com

Information is believed to be accurate but not guaranteed.



TOM SMITH, ALC®, BROKER
 Tom@TomSmithLand.com
 601.898.2772 office | 601.454.9397 cell



Expect More. Get More.

TomSmithLandandHomes.com

Information is believed to be accurate but not guaranteed.



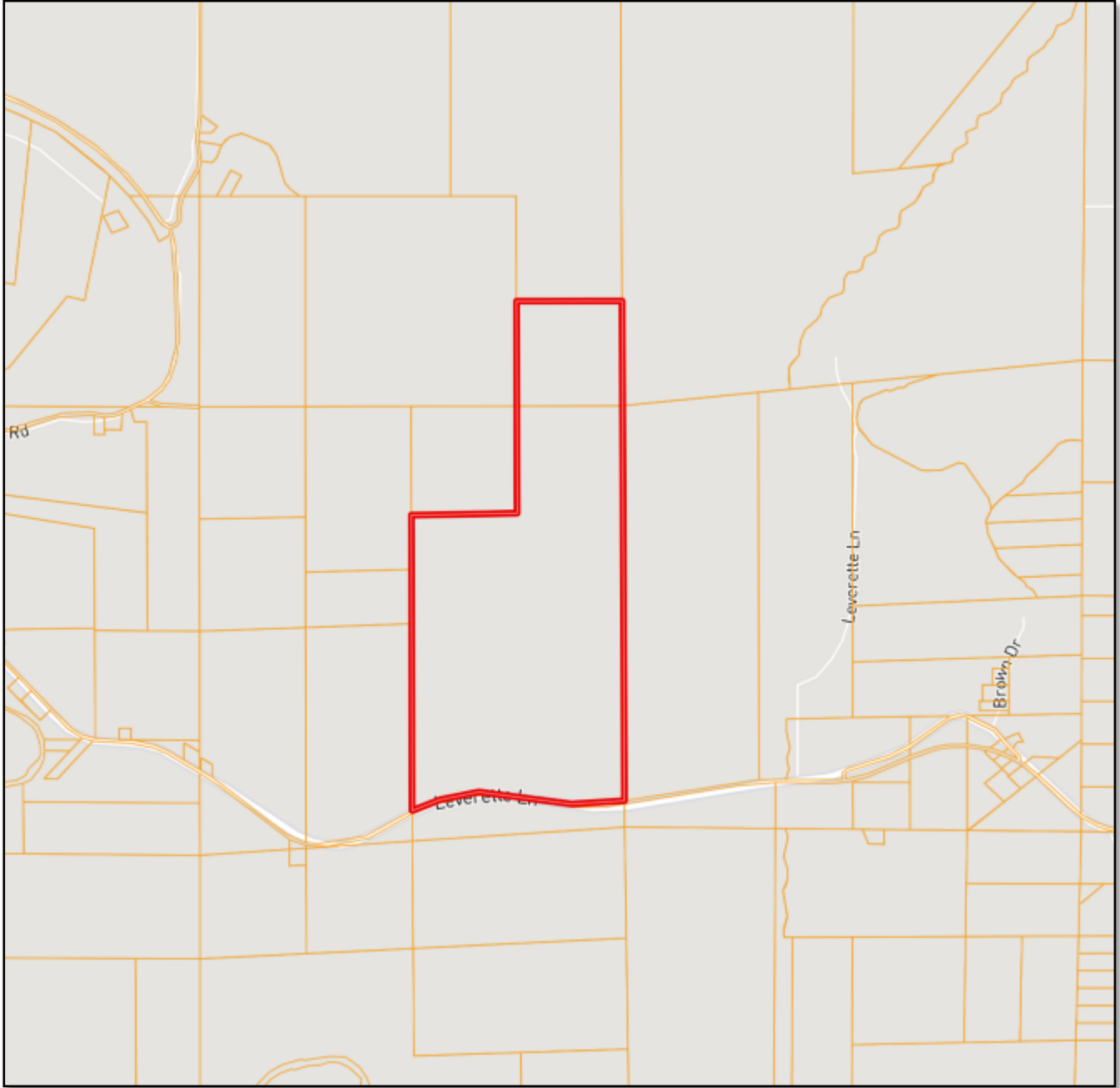
TOM SMITH, ALC®, BROKER
 Tom@TomSmithLand.com
 601.898.2772 office | 601.454.9397 cell



TomSmithLandandHomes.com

Information is believed to be accurate but not guaranteed.

OWNERSHIP MAP



TOM SMITH, ALC®, BROKER
Tom@TomSmithLand.com
601.898.2772 **office** | 601.454.9397 **cell**

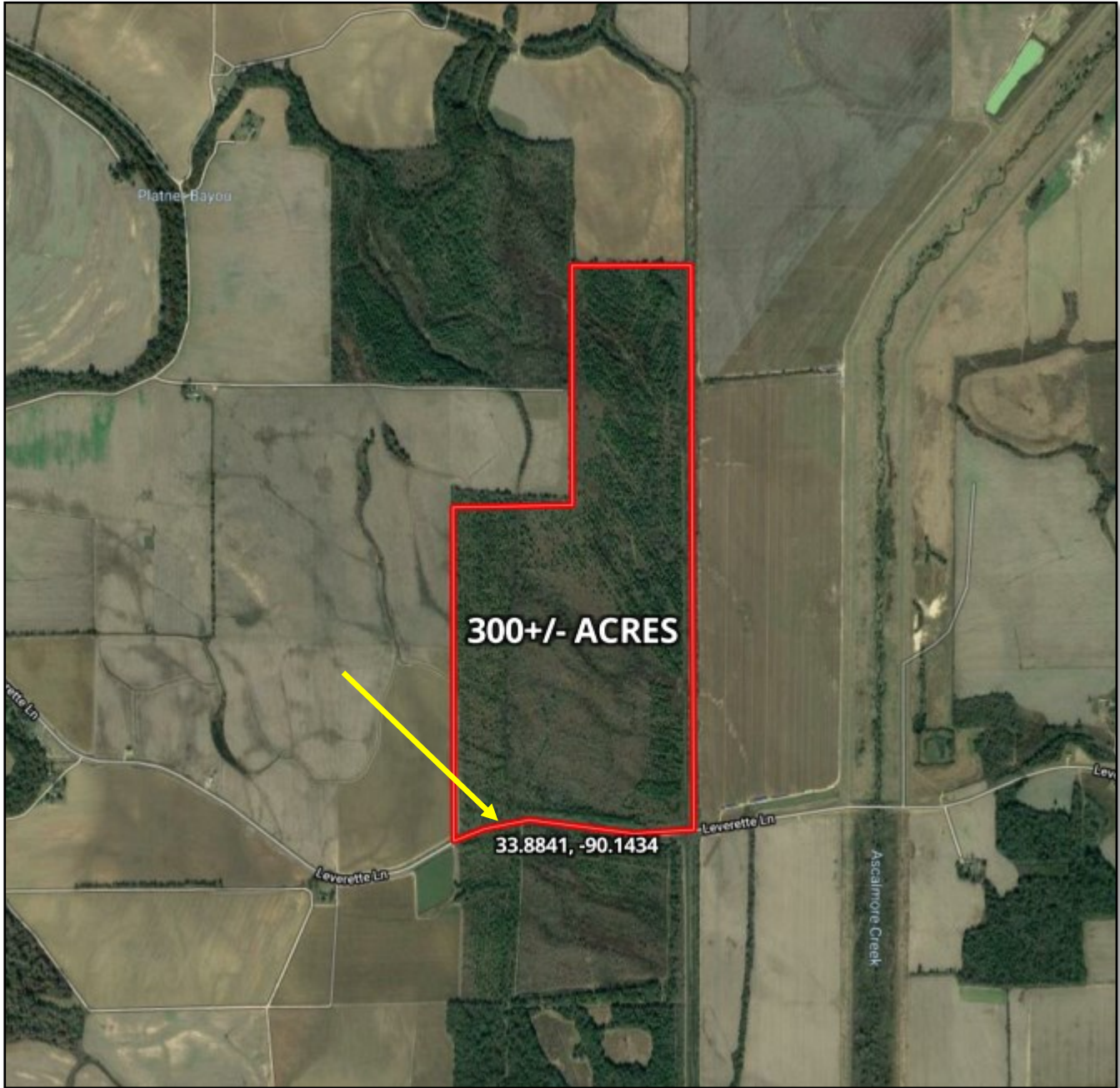


Expect More. Get More.

TomSmithLandandHomes.com

Information is believed to be accurate but not guaranteed.

AERIAL MAP



Click [HERE](#) for an Interactive Map



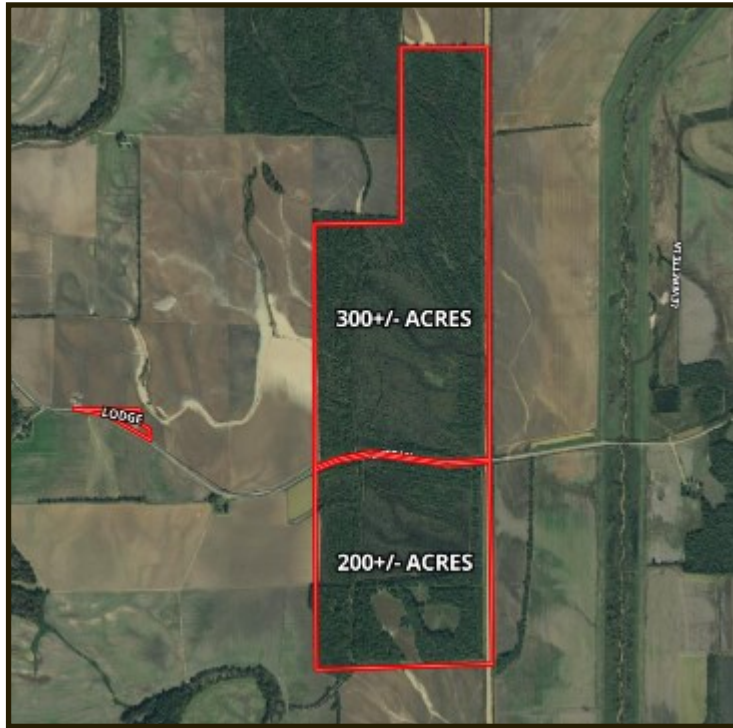
TOM SMITH, ALC®, BROKER
Tom@TomSmithLand.com
601.898.2772 **office** | 601.454.9397 **cell**



TomSmithLandandHomes.com

Information is believed to be accurate but not guaranteed.

ADDITIONAL ACREAGE AVAILABLE



TOM SMITH, ALC®, BROKER
Tom@TomSmithLand.com
601.898.2772 office | 601.454.9397 cell

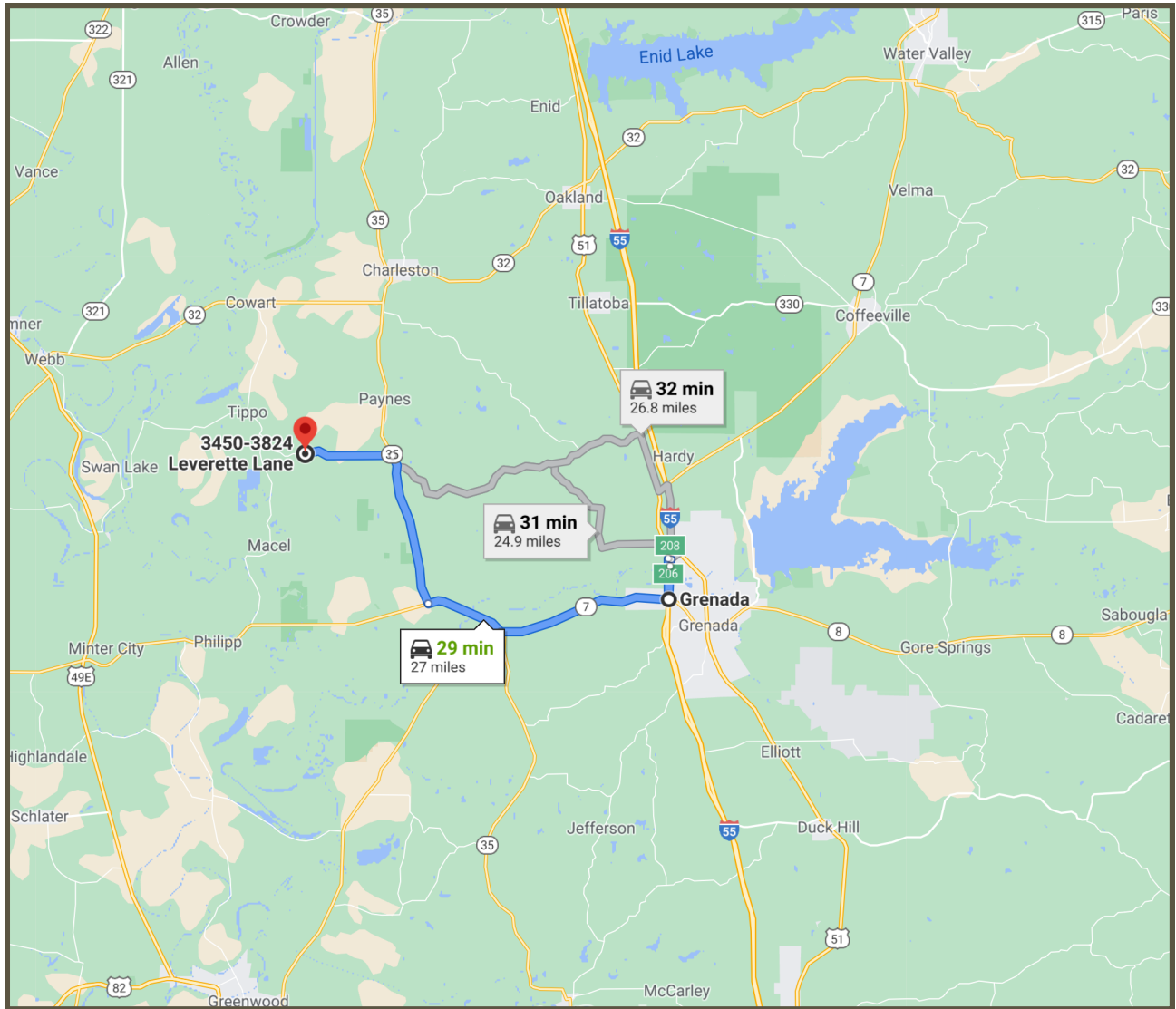


Expect More. Get More.

TomSmithLandandHomes.com

Information is believed to be accurate but not guaranteed.

DIRECTIONAL MAP



DIRECTIONS FROM I-55N IN GRENADA, MS: Take exit 206 towards Hwy 7/Hwy 8 and continue on Hwy 8 for 8.1 miles. Turn right on Hwy 35/Hwy 8 and travel 3.8 miles. Turn right on Hwy 35 and travel 7.1 miles. Turn left on Leverette Ln, after 4.1 miles the



Call The Land Man Today!

TOM SMITH, ALC®, BROKER

Tom@TomSmithLand.com

601.898.2772 **office** | 601.454.9397 **cell**

112 Village Blvd, Madison, MS 39110



Expect More. Get More.

TomSmithLandandHomes.com

Information is believed to be accurate but not guaranteed.