

*21+/- Acres with a Beautiful Home
Lawrence County MS*



Address: 1655 Carmel New Hope Rd Monticello MS, 39654

This Lawrence County, MS property is to die for! A beautiful 5,523+/- square foot home is situated on 21+/- acres and features a 40x60 insulated, enclosed shop and an in-ground pool. Just beyond the beveled glass French doors, you will find four spacious bedrooms each with a private bath, a kitchen suited for even the most seasoned chef, and a recreational room with a kitchenette which also provides access to the back patio, perfect for entertaining guests without constant traffic through the main living area. As you meander around this home, take notice of pocket doors in the entry ways, the grand view from the living room overlooking the pool, gas fireplaces among the living room, a sitting room and double ovens in the kitchen as well as the built in ice maker. When you enter from the two car garage you are greeted with lockers and shoe storage as well as a bonus room full of possibilities. Let's not forget the designated ATV garage and the endless amount of open floor space in the attic. The 21 +/- acres provides a naturally stocked pond, ATV trails, room to target practice and hunt the wildlife that Lawrence County has to offer. I told you this home has it all; call Sabrina to view!



call me today!

SABRINA WOLFF, REALTOR®
Sabrina@TomSmithHomes.com
601.990.5070 office | 601.754.3763 cell



TomSmithLandandHomes.com

Information is believed to be accurate but not guaranteed.



Call me today!

SABRINA WOLFF, REALTOR®
Sabrina@TomSmithHomes.com
601.990.5070 office | 601.754.3763 cell



TomSmithLandandHomes.com

Information is believed to be accurate but not guaranteed.



2011-2020
BEST
BROKERAGES

Call me today!

SABRINA WOLFF, REALTOR®
Sabrina@TomSmithHomes.com
601.990.5070 office | 601.754.3763 cell



TomSmithLandandHomes.com

Information is believed to be accurate but not guaranteed.



2011-2020
BEST
BROKERAGES

Call me today!

SABRINA WOLFF, REALTOR®
Sabrina@TomSmithHomes.com
601.990.5070 office | 601.754.3763 cell



TomSmithLandandHomes.com

Information is believed to be accurate but not guaranteed.



2011-2020
BEST
BROKERAGES

Call me today!

SABRINA WOLFF, REALTOR®
Sabrina@TomSmithHomes.com
601.990.5070 office | 601.754.3763 cell



TomSmithLandandHomes.com

Information is believed to be accurate but not guaranteed.



2011-2020
BEST
BROKERAGES

Call me today!

SABRINA WOLFF, REALTOR®
Sabrina@TomSmithHomes.com
601.990.5070 office | 601.754.3763 cell



TomSmithLandandHomes.com

Information is believed to be accurate but not guaranteed.



Call me today!

SABRINA WOLFF, REALTOR®
Sabrina@TomSmithHomes.com
601.990.5070 office | 601.754.3763 cell



TomSmithLandandHomes.com

Information is believed to be accurate but not guaranteed.



A third bay in the garage is specifically for the ATV. This bay also allows access to an abundance of open floor space in the attic where the possibilities are endless. A perfect area is cut out for target practice.



Call me today!

SABRINA WOLFF, REALTOR®
 Sabrina@TomSmithHomes.com
 601.990.5070 office | 601.754.3763 cell



TomSmithLandandHomes.com

Information is believed to be accurate but not guaranteed.



Aerial Map



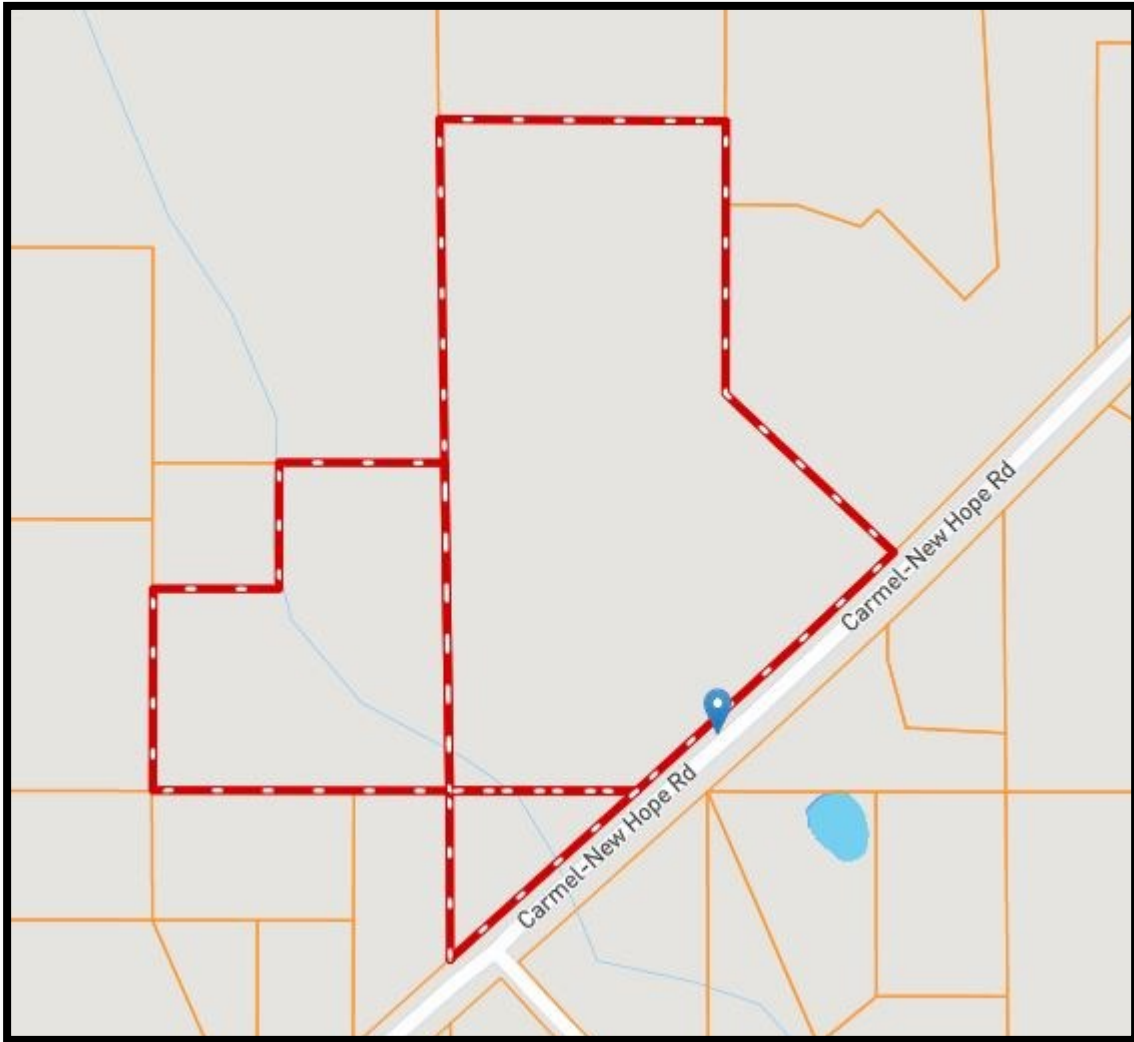
call me today!

SABRINA WOLFF, REALTOR®
Sabrina@TomSmithHomes.com
601.990.5070 office | 601.754.3763 cell



TomSmithLandandHomes.com

Information is believed to be accurate but not guaranteed.



Ownership Map



2011-2020
BEST
BROKERAGES

call me today!

SABRINA WOLFF, REALTOR®
Sabrina@TomSmithHomes.com
601.990.5070 office | 601.754.3763 cell



TomSmithLandandHomes.com

Information is believed to be accurate but not guaranteed.



Topo Map



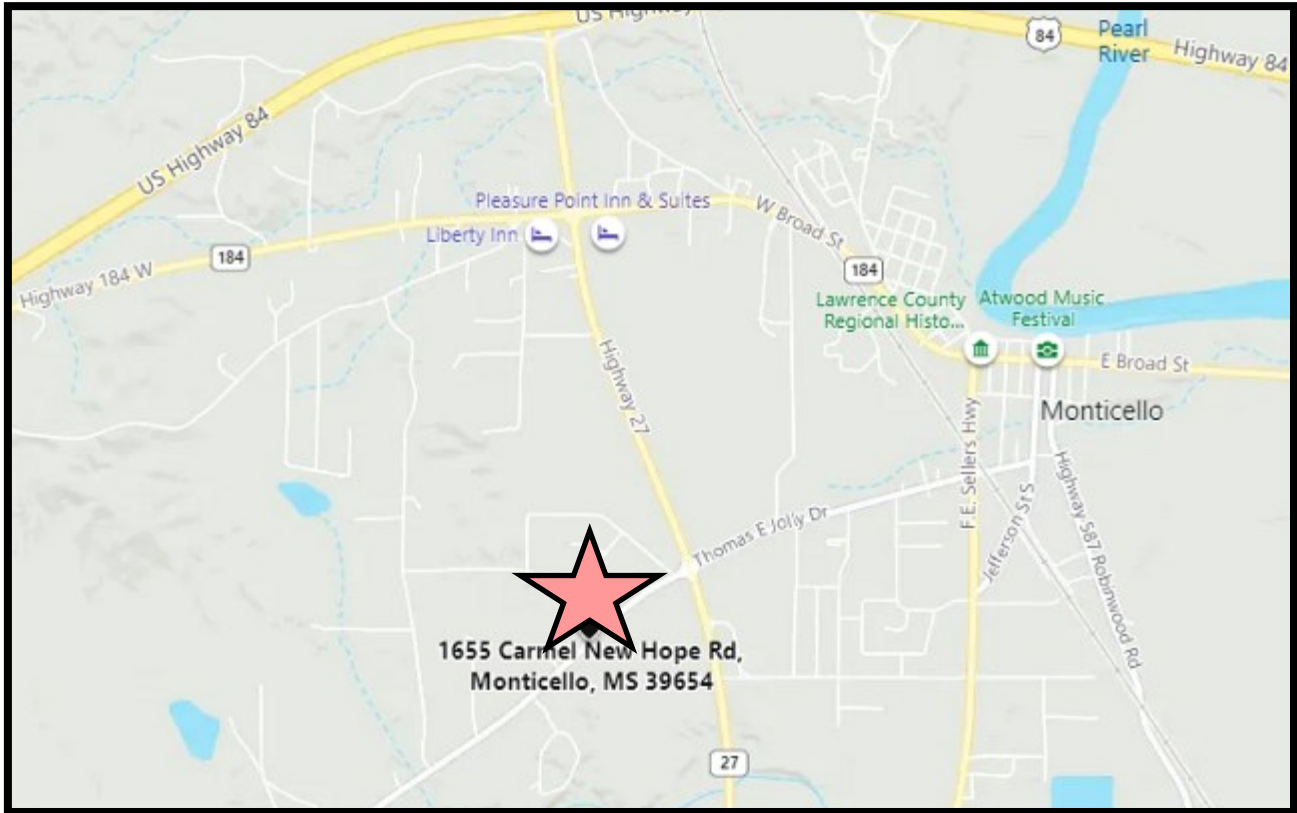
Call me today!

SABRINA WOLFF, REALTOR®
Sabrina@TomSmithHomes.com
601.990.5070 office | 601.754.3763 cell



TomSmithLandandHomes.com

Information is believed to be accurate but not guaranteed.



Directional Map

Directions from Brookhaven MS : Travel east on Hwy 84 for 12 miles. Turn right onto MS-184. In 1.7 miles turn right onto MS-27S. In two miles turn right onto W Thomas E Jolly Dr. (Carmel New Hope Dr) The property will be on the right.

Address : 1655 Carmel New Hope Rd Monticello MS, 39654



Call me today!

SABRINA WOLFF, REALTOR®
Sabrina@TomSmithHomes.com
601.990.5070 office | 601.754.3763 cell



TomSmithLandandHomes.com

Information is believed to be accurate but not guaranteed.