



## 15.45+/- Acres in the City Limits of Brookhaven Lincoln County, MS



This is a small acreage pasture tract in the city limits of Brookhaven in Lincoln County, MS. The property is fenced and will hold your cows or horses! This 15.45+/- acre tract has enough road frontage on Field Lark Lane to be divided into smaller tracts and sold separately. There is an adjoining property with a home that could be purchased with this tract. Small acreage tracts in the city of Brookhaven do not come available very often, so act fast! Call Eli today to schedule a viewing!

Directions from the intersection of Hwy 51 and Industrial Park Drive in Brookhaven, MS:  
Travel west on Industrial Park Drive about 0.3 miles and turn right onto Field Lark Lane.  
Travel 0.2 miles and the property will be on your left.



*Call me today!*

**ELI FERGUSON**, REALTOR®  
Eli@TomSmithLand.com  
601.990.5070 office | 601.757.7117 cell



Expect More. Get More.

**TomSmithLandandHomes.com**

Information is believed to be accurate but not guaranteed.



LandReport  
2011-2020  
AMERICAN  
BEST  
BROKERAGES

Proud to be  
C2EX  
endorsed!

*Call me today!*

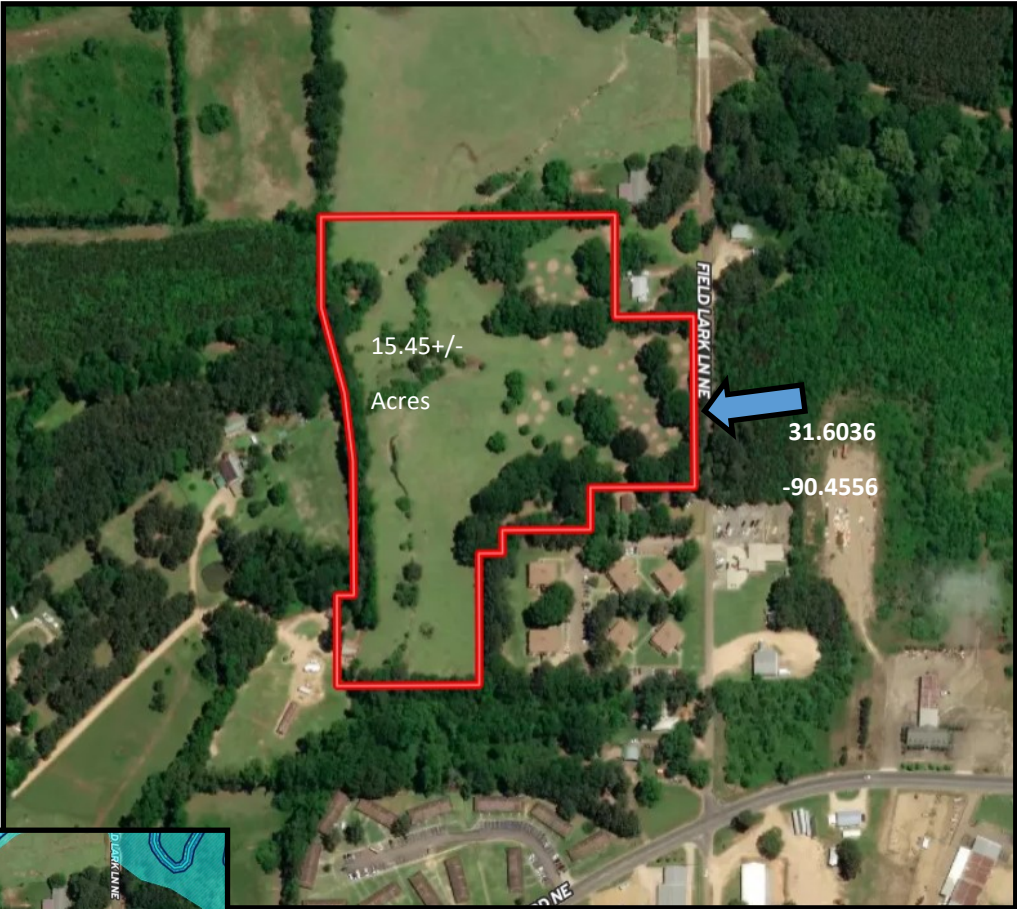
**ELI FERGUSON**, REALTOR®  
Eli@TomSmithLand.com  
601.990.5070 office | 601.757.7117 cell



**TomSmithLandandHomes.com**

Information is believed to be accurate but not guaranteed.

# Aerial Map



# Flood Map



*call me today!*

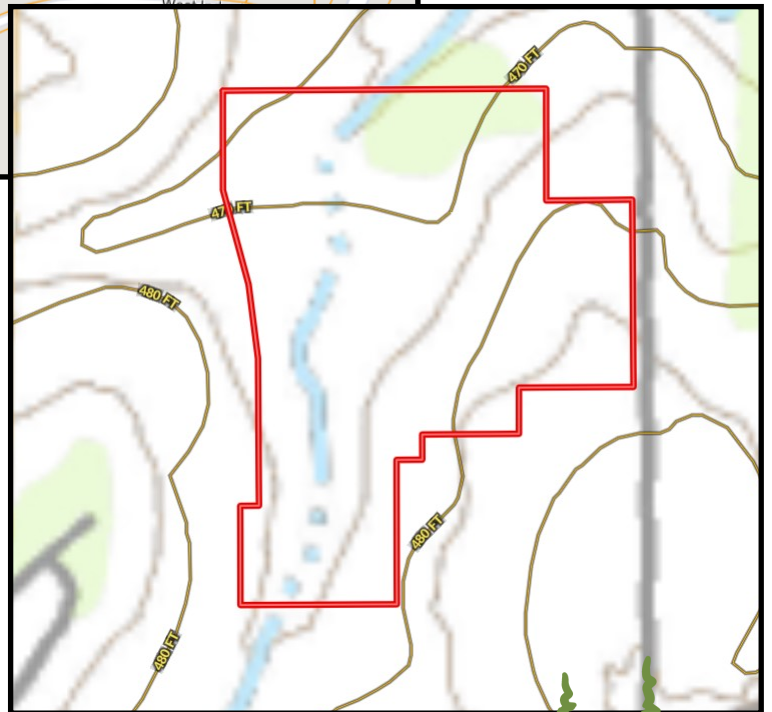
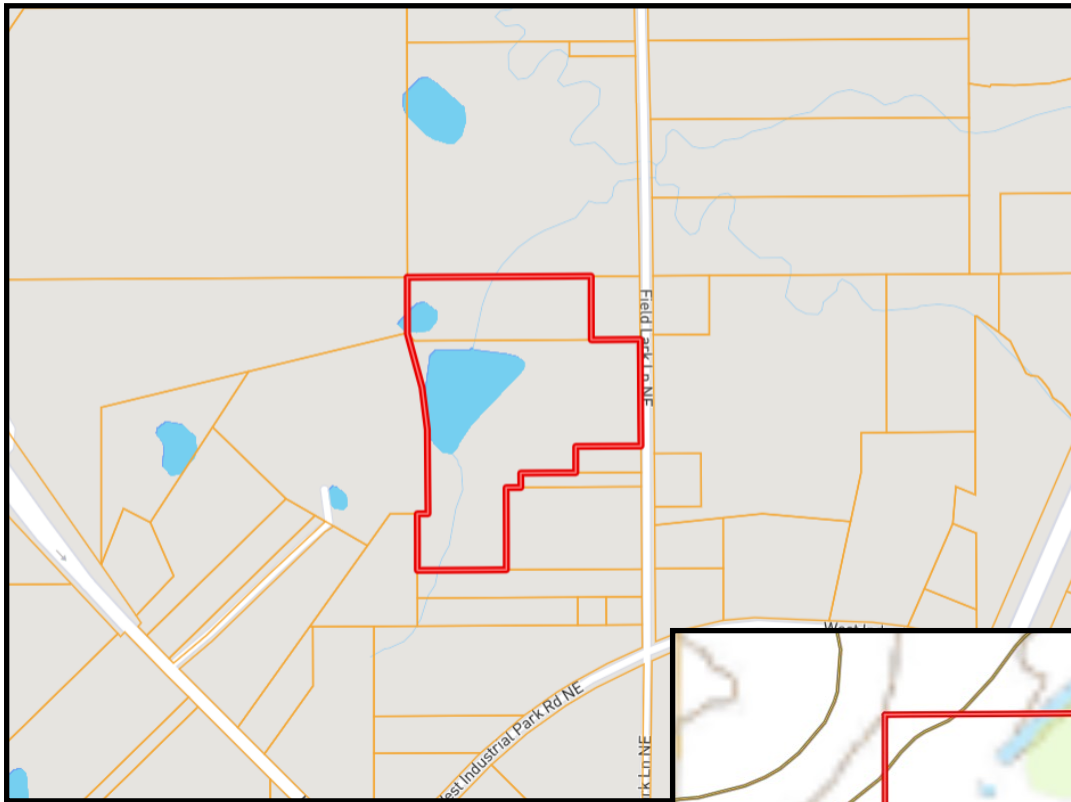
**ELI FERGUSON**, REALTOR®  
Eli@TomSmithLand.com  
601.990.5070 office | 601.757.7117 cell



**TomSmithLandandHomes.com**

Information is believed to be accurate but not guaranteed.

# Ownership Map



Topo  
Map



*call me today!*

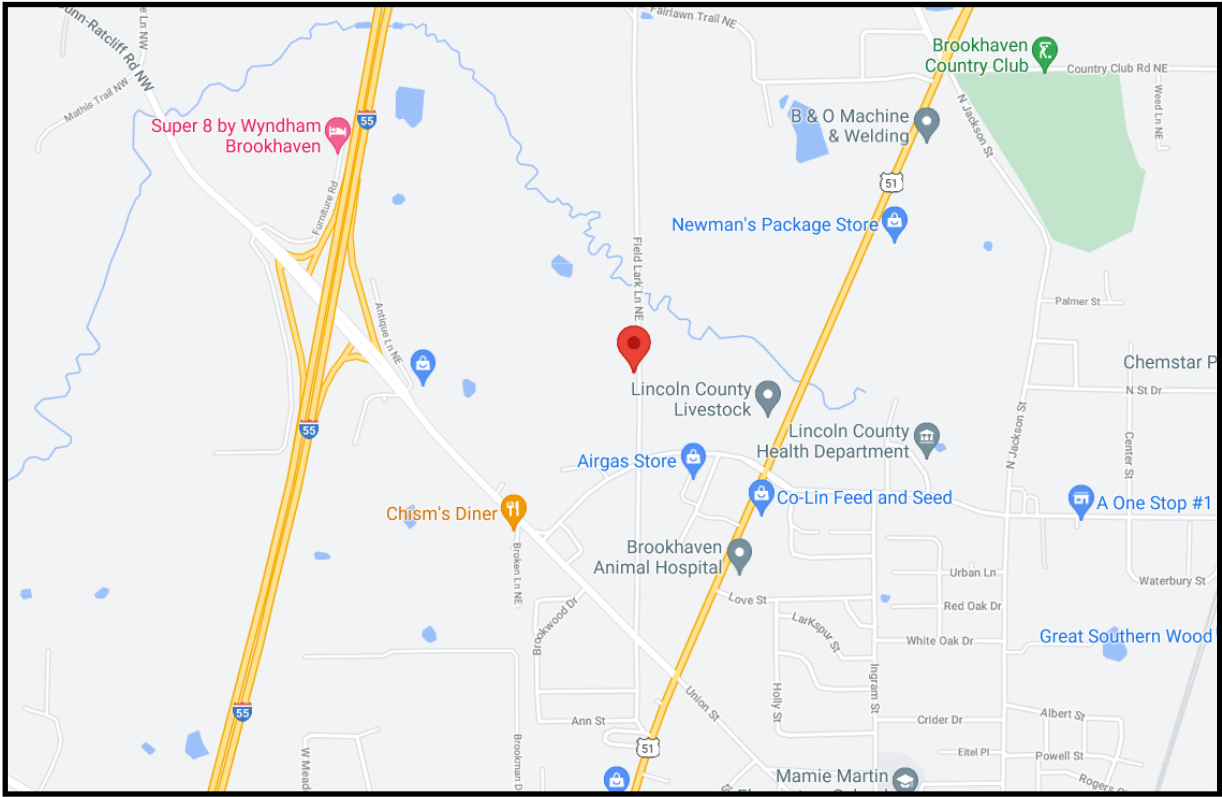
**ELI FERGUSON**, REALTOR®  
Eli@TomSmithLand.com  
601.990.5070 office | 601.757.7117 cell



Expect More. Get More.

**TomSmithLandandHomes.com**

Information is believed to be accurate but not guaranteed.



## Directional Map



Directions from the intersection of Hwy 51 and Industrial Park Drive in Brookhaven, MS: Travel west on Industrial Park Drive about 0.3 miles and turn right onto Field Lark Lane. Travel 0.2 miles and the property will be on your left.



*call me today!*

**ELI FERGUSON**, REALTOR®  
 Eli@TomSmithLand.com  
 601.990.5070 office | 601.757.7117 cell



**TomSmithLandandHomes.com**

Information is believed to be accurate but not guaranteed.