



# Turn-Key Home on a 0.35+/- Acre Lot Lincoln County, MS



**\$185,000**

523 W Chippewa Street Brookhaven, MS 39601

Looking for a home convenient to Brookhaven? This 1,911+/- square foot, four bedroom, three bath Lincoln County, MS home is situated on a 0.35+/- acre lot just blocks from downtown Brookhaven in the Olde Towne community. Over the past three years, several updates have been completed including a beautifully remodeled kitchen featuring gorgeous granite countertops. The bedrooms are spacious and most offer double closets! Ample natural light fills every room which compliments the hardwood floors. The carport and large backyard are great for entertaining family and friends. A metal shed, tree fort, and seating around a cozy fire pit are in the backyard. Call Blake today to schedule a viewing of this charming home!

Directions from the Intersection of Highway 51 and Natchez Avenue: Travel north on US-51 N towards W Chippewa Street for 0.5 miles. Turn right onto W Chippewa Street and the home will be on the right in 0.3 miles.



*Call me today!*

**BLAKE SASSER**, REALTOR®  
Blake@TomSmithLand.com  
601.990.5070 office | 601-757-5027 cell



**TomSmithLandandHomes.com**

Information is believed to be accurate but not guaranteed.





**BLAKE SASSER**, REALTOR®  
Blake@TomSmithLand.com  
601.990.5070 office | 601-757-5027 cell



**TomSmithLandandHomes.com**

Information is believed to be accurate but not guaranteed.





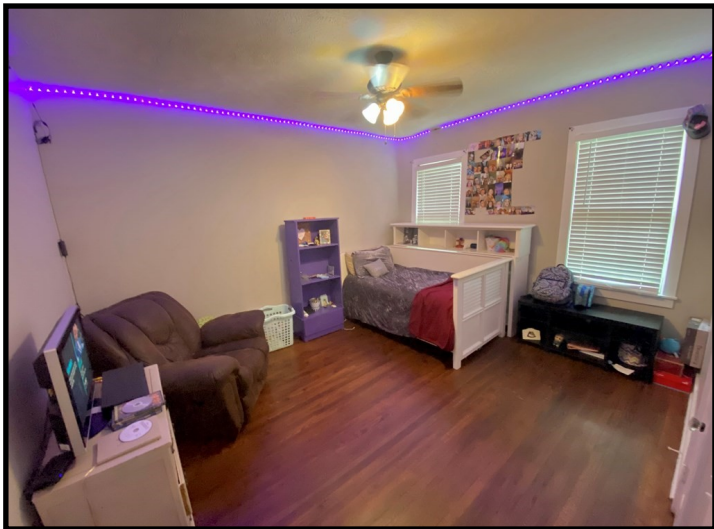
**BLAKE SASSER**, REALTOR®  
Blake@TomSmithLand.com  
601.990.5070 office | 601-757-5027 cell

Expect More. Get More.

**TomSmithLandandHomes.com**

Information is believed to be accurate but not guaranteed.





**BLAKE SASSER**, REALTOR®  
Blake@TomSmithLand.com  
601.990.5070 office | 601-757-5027 cell



**TomSmithLandandHomes.com**

Information is believed to be accurate but not guaranteed.

# Aerial Map

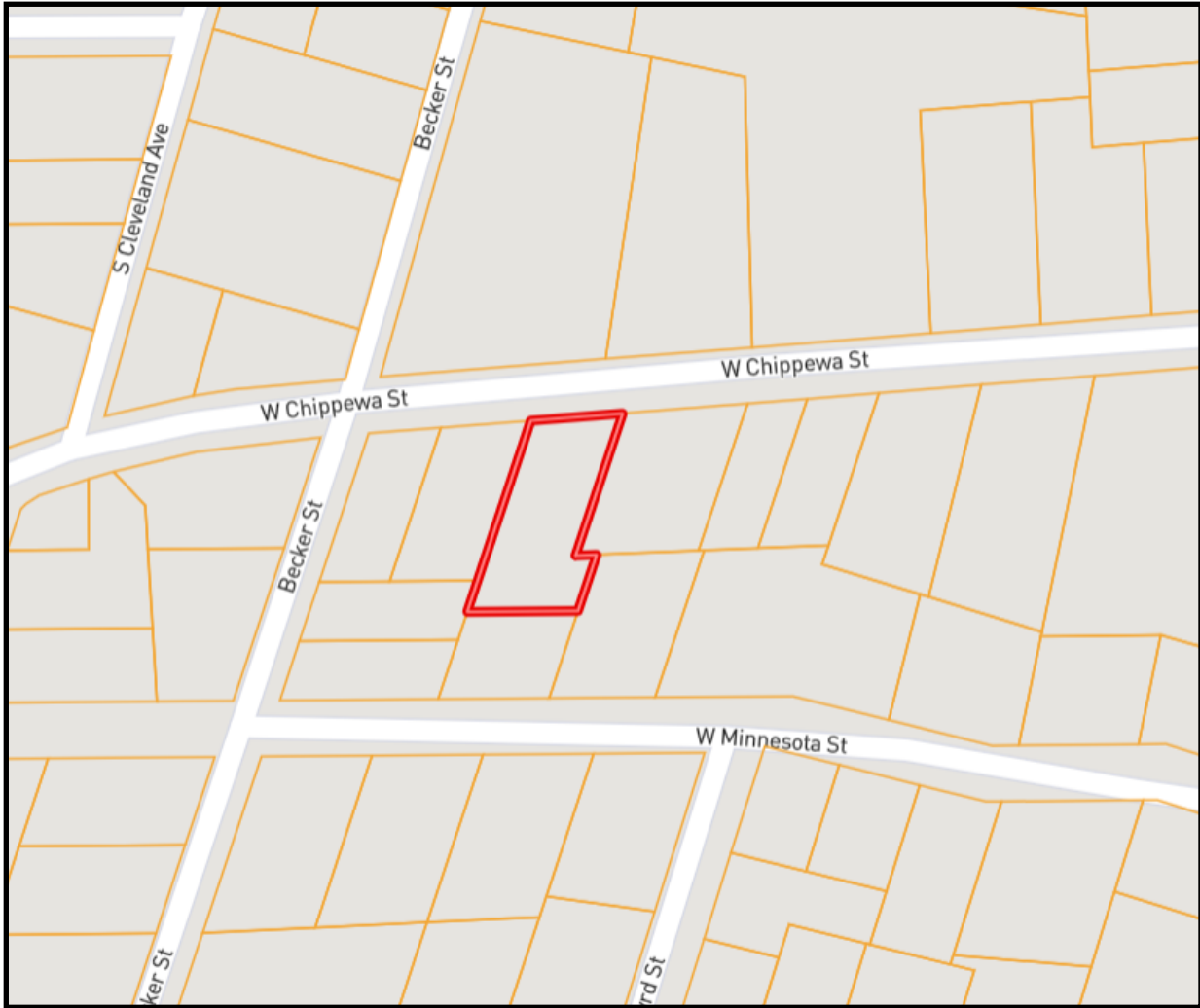


**BLAKE SASSER**, REALTOR®  
Blake@TomSmithLand.com  
601.990.5070 office | 601-757-5027 cell

**TomSmithLandandHomes.com**

Information is believed to be accurate but not guaranteed.





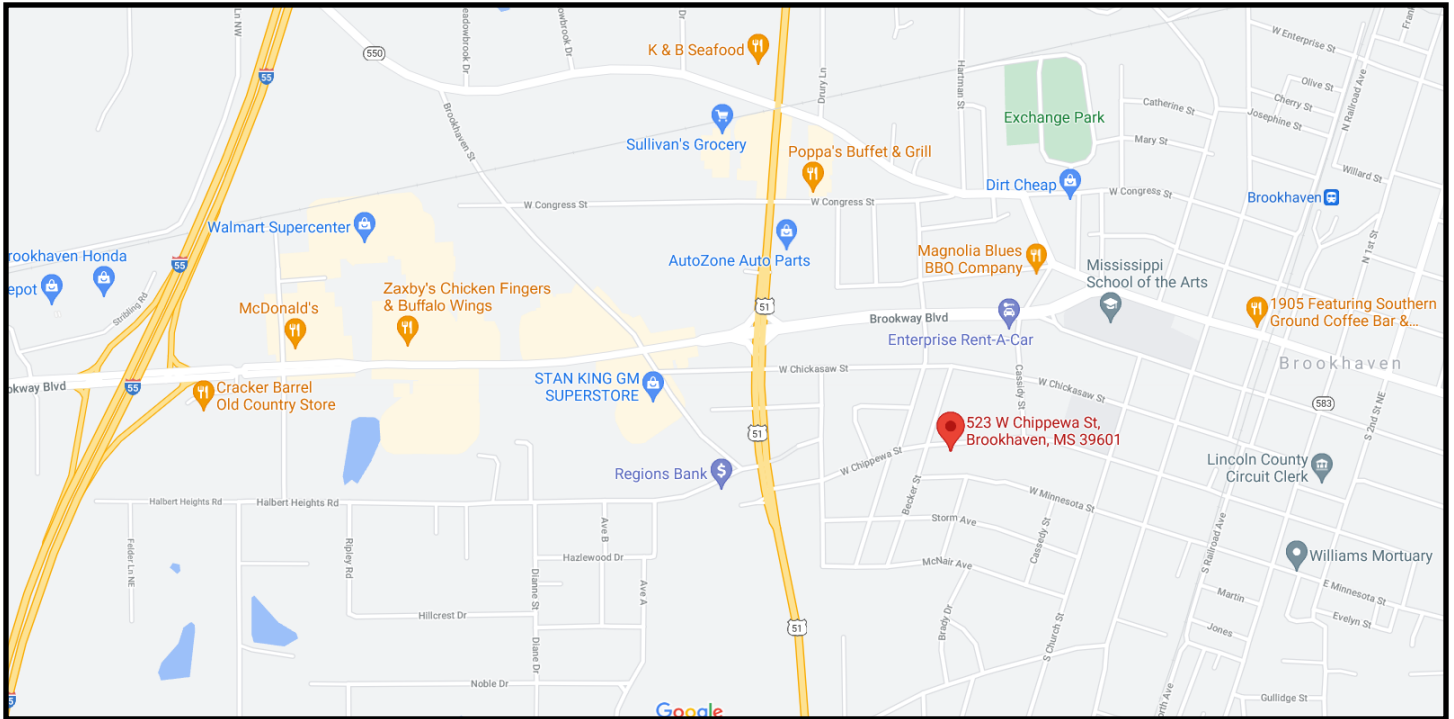
## Ownership Map



**BLAKE SASSER**, REALTOR®  
Blake@TomSmithLand.com  
601.990.5070 office | 601-757-5027 cell

[TomSmithLandandHomes.com](http://TomSmithLandandHomes.com)

Information is believed to be accurate but not guaranteed.



# Directional Map

Directions from the Intersection of Highway 51 and Natchez Avenue: Travel north on US-51 N towards W Chippewa Street for 0.5 miles. Turn right onto W Chippewa Street and the home will be on the right in 0.3 miles.



**BLAKE SASSER**, REALTOR®  
 Blake@TomSmithLand.com  
 601.990.5070 office | 601-757-5027 cell

**TomSmithLandandHomes.com**

Information is believed to be accurate but not guaranteed.