

79.5 SURVEYED ACRE PARADISE HINDS COUNTY, MS



\$799,000

- 79.5 Surveyed Acres
- 2,837± Square Foot Lodge
- 3± Acre Stocked Fishing Pond
- 9 Stall Horse Stable
- Rolling Pasture with Additional Homesites
- Massive Pecan, Black Walnut and Oak Trees
- Frontage on North Chapel Hill Road
- 25 Miles from Jackson, MS



1255 North Chapel Hill Road, Raymond, MS 39154



ADAM HESTER, REALTOR®
Adam@TomSmithLand.com
601.898.2772 office | 601.506.5058 cell



Expect More. Get More.

call us today!



PETE PRISOCK, REALTOR®
Pete@TomSmithHomes.com
601.898.2772 office | 601.291.5863 cell

TomSmithLandandHomes.com

Information is believed to be accurate but not guaranteed.

LandReport
2011-2020
NATIONAL
BEST
BROKERAGES



Whether you are looking for a weekend getaway or a place to call home, this 79.5 surveyed acre property is a must see. From the moment you arrive through the private gate, you will be captivated by beauty and peacefulness. Located approximately 4 miles west of Raymond, MS in Hinds County, you are a short 4 miles from the Natchez Trace Parkway and 25 minutes to Jackson.

The 2,837± square foot lodge offers four bedrooms, three bathrooms and a loft with an entertainment area and two sleeping rooms. The A-Frame construction features soaring ceilings, a large stone fireplace and ceiling to floor picture windows which provide extraordinary views of the pond and property. The spacious floor plan and kitchen are ideal for hosting family and friends. Additional features include a laundry room, mud-room, security system, two covered porches and porch swing! As you make your way outside, you will find an oversized front deck, accompanied by a fire pit and seating overlooking the pond and beautifully manicured acres. This is the perfect spot to relax or entertain!

The grounds primarily consist of open pasture, scattered with a large number of massive pecan, black walnut and oak trees. The focal point of the land is the 3± acre fishing pond, stocked with bass, bream and crappie. A recent fish survey was done, and the management plan will be available to the new owner. For horse lovers, a 24'x93' horse stable is complete with nine stalls, a washing station, and covered walkway

This is that "hard to find" property you have been looking for. It truly is a place that checks all the boxes. For more information, call Adam Hester or Pete Prisock today!



ADAM HESTER, REALTOR®
Adam@TomSmithLand.com
601.898.2772 office | 601.506.5058 cell



PETE PRISOCK, REALTOR®
Pete@TomSmithHomes.com
601.898.2772 office | 601.291.5863 cell

TomSmithLandandHomes.com

Information is believed to be accurate but not guaranteed.





ADAM HESTER, REALTOR®
 Adam@TomSmithLand.com
 601.898.2772 office | 601.506.5058 cell



PETE PRISOCK, REALTOR®
 Pete@TomSmithHomes.com
 601.898.2772 office | 601.291.5863 cell

TomSmithLandandHomes.com

Information is believed to be accurate but not guaranteed.





ADAM HESTER, REALTOR®
Adam@TomSmithLand.com
601.898.2772 office | 601.506.5058 cell



Expect More. Get More.

PETE PRISOCK, REALTOR®
Pete@TomSmithHomes.com
601.898.2772 office | 601.291.5863 cell

TomSmithLandandHomes.com

Information is believed to be accurate but not guaranteed.





ADAM HESTER, REALTOR®
Adam@TomSmithLand.com
601.898.2772 office | 601.506.5058 cell



PETE PRISOCK, REALTOR®
Pete@TomSmithHomes.com
601.898.2772 office | 601.291.5863 cell

TomSmithLandandHomes.com

Information is believed to be accurate but not guaranteed.





79.5 ACRES

32.259101, -90.485649

Interactive Aerial Map



ADAM HESTER, REALTOR®
Adam@TomSmithLand.com
601.898.2772 office | 601.506.5058 cell



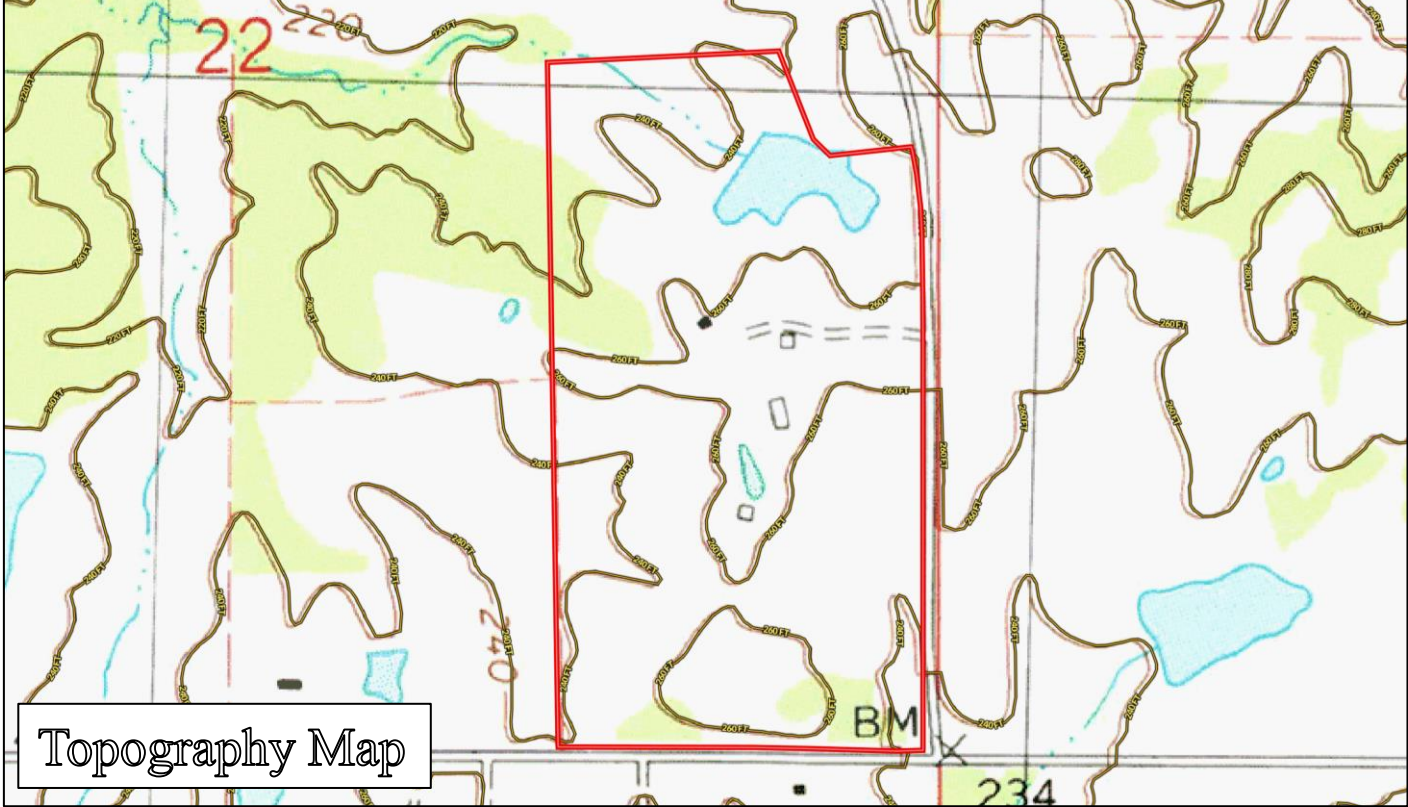
Expect More. Get More.

PETE PRISOCK, REALTOR®
Pete@TomSmithHomes.com
601.898.2772 office | 601.291.5863 cell

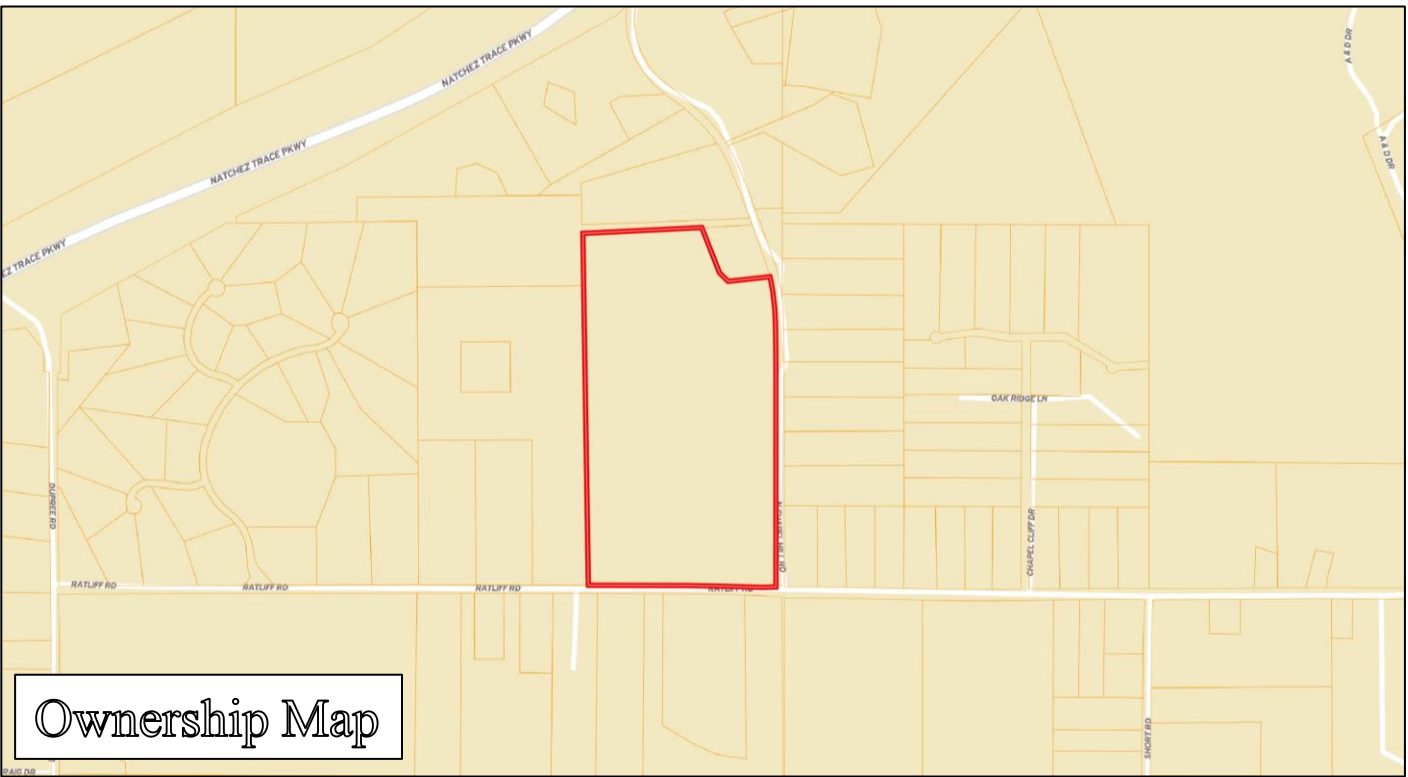
TomSmithLandandHomes.com

Information is believed to be accurate but not guaranteed.





Topography Map



Ownership Map



ADAM HESTER, REALTOR®
Adam@TomSmithLand.com
601.898.2772 office | 601.506.5058 cell

PETE PRISOCK, REALTOR®
Pete@TomSmithHomes.com
601.898.2772 office | 601.291.5863 cell

TomSmithLandandHomes.com

Information is believed to be accurate but not guaranteed.





Directional Map

Directions from Natchez Trace Parkway: For Raymond, take the exit for Highway 467. Turn left onto Highway 467 and proceed for 1.4 miles. Turn left onto North Chapel Hill Road and in 2.1 miles, the property will be on your right. **1255 North Chapel Hill Road, Raymond, MS 39154**



ADAM HESTER, REALTOR®
 Adam@TomSmithLand.com
 601.898.2772 office | 601.506.5058 cell



PETE PRISOCK, REALTOR®
 Pete@TomSmithHomes.com
 601.898.2772 office | 601.291.5863 cell

TomSmithLandandHomes.com

Information is believed to be accurate but not guaranteed.

