

25.3+/- Acres of Development Potential Lincoln County, MS



This 25.3+/- acre tract in Lincoln County, MS is located just blocks from the heart of Brookhaven. The unimproved property offers tons of development potential with great road frontage on South First Street as well as access to the railroad. The new residential development on the adjoining property may help peak someone's interest in developing this one as well! Call Eli today to schedule a viewing!

Directions from Brookhaven, MS: From downtown Brookhaven at the court house, travel 1 mile south on First Street and the property will be on your right.



call me today!

ELI FERGUSON, REALTOR®
Eli@TomSmithLand.com
601.990.5070 office | 601.757.7117 cell



TomSmithLandandHomes.com

Information is believed to be accurate but not guaranteed.



call me today!

ELI FERGUSON, REALTOR®
Eli@TomSmithLand.com
601.990.5070 **office** | 601.757.7117 **cell**



TomSmithLandandHomes.com

Information is believed to be accurate but not guaranteed.

Aerial Map



Flood Map



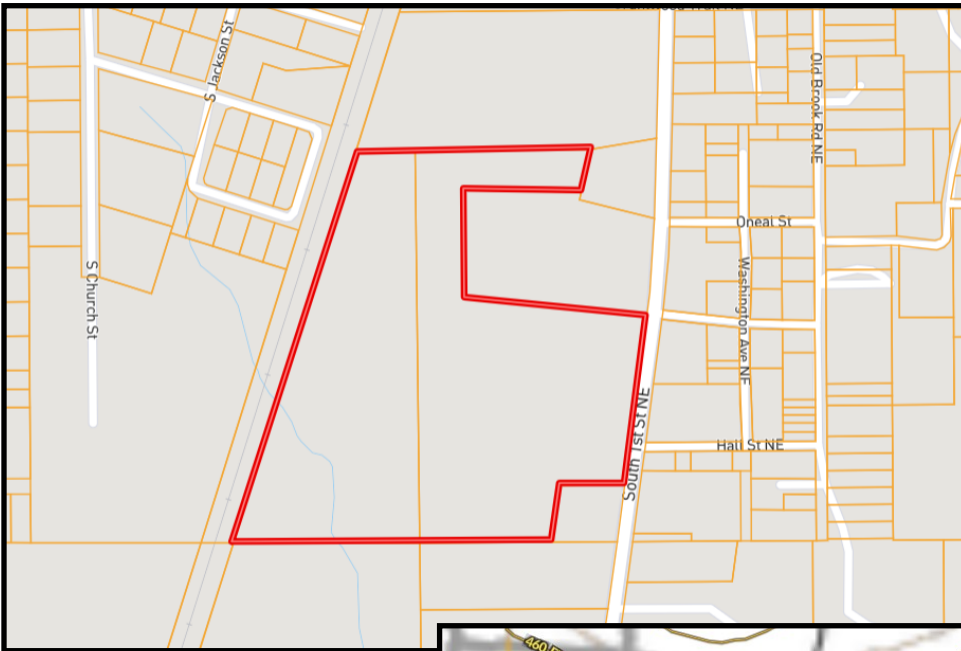
call me today!

ELI FERGUSON, REALTOR®
Eli@TomSmithLand.com
601.990.5070 office | 601.757.7117 cell

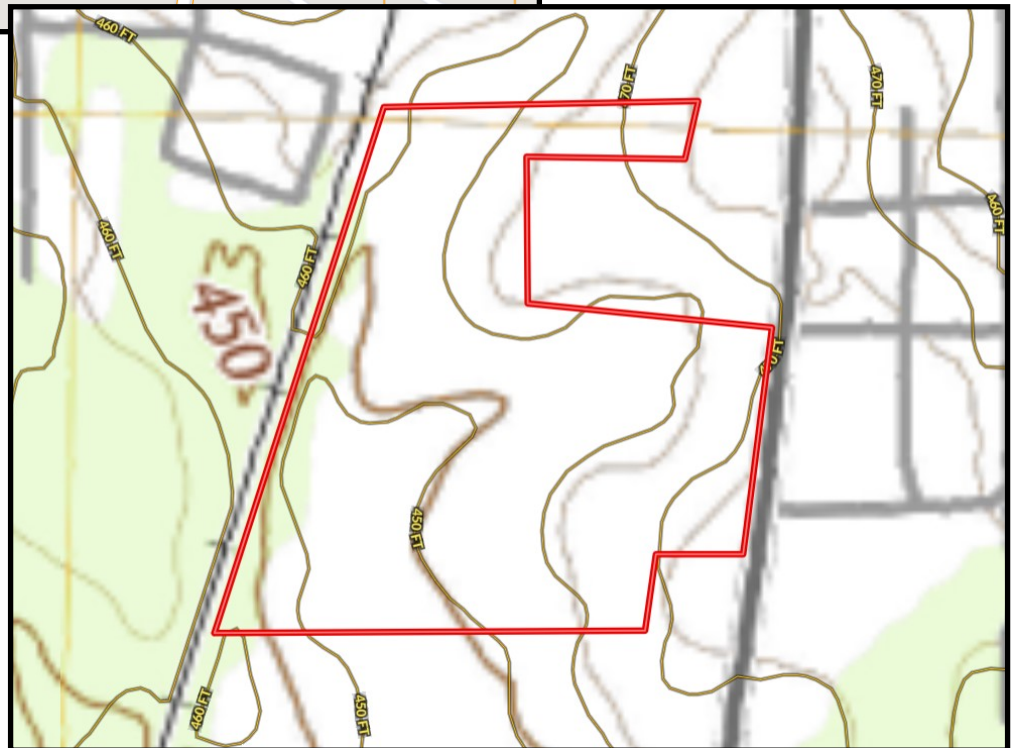


TomSmithLandandHomes.com

Information is believed to be accurate but not guaranteed.



Ownership
Map



Topo
Map



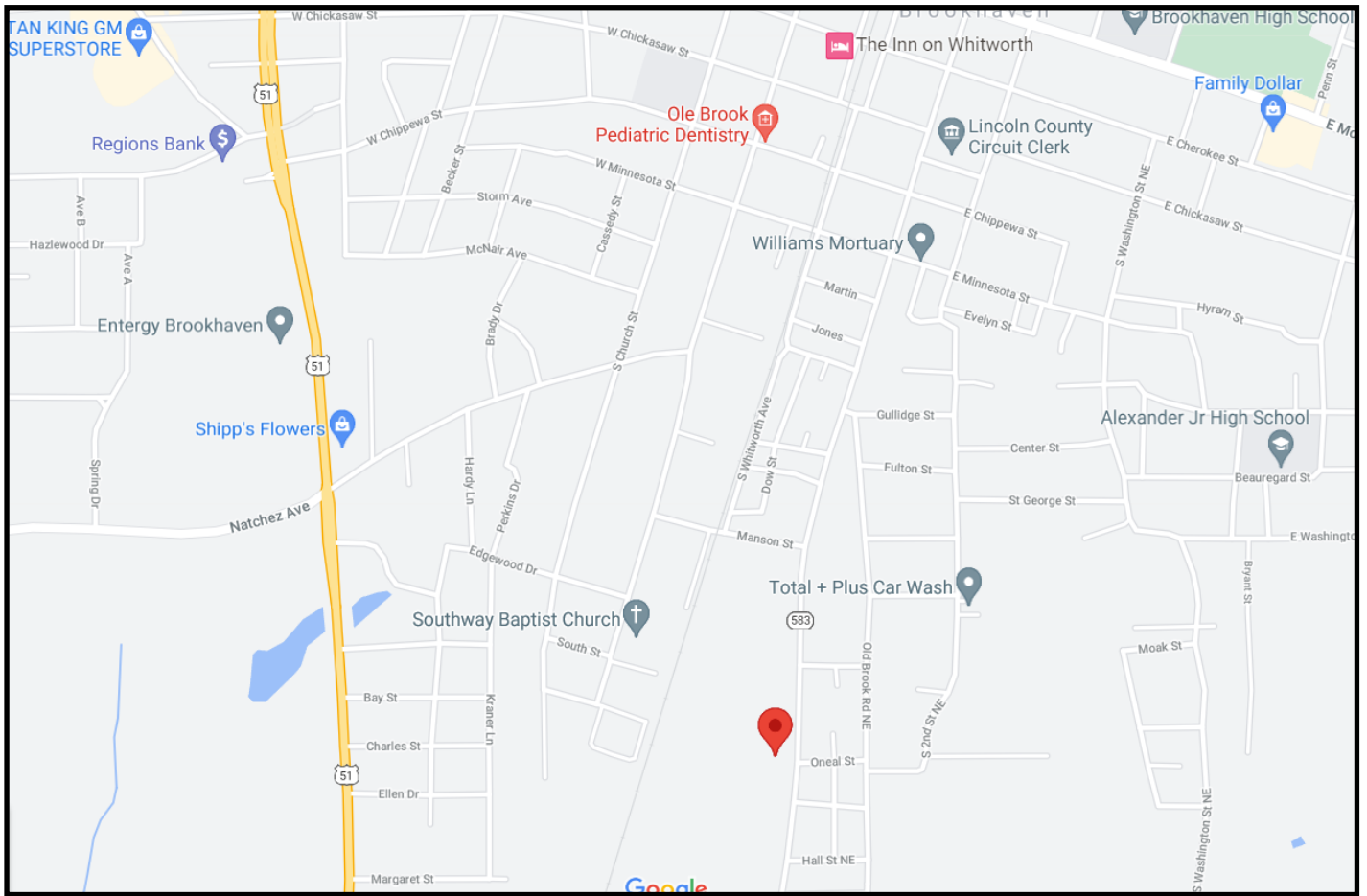
call me today!

ELI FERGUSON, REALTOR®
 Eli@TomSmithLand.com
 601.990.5070 office | 601.757.7117 cell



TomSmithLandandHomes.com

Information is believed to be accurate but not guaranteed.



Directional Map

Directions from Brookhaven, MS: From downtown Brookhaven at the court house, travel 1 mile south on First Street and the property will be on your right.



call me today!

ELI FERGUSON, REALTOR®
 Eli@TomSmithLand.com
 601.990.5070 office | 601.757.7117 cell



TomSmithLandandHomes.com

Information is believed to be accurate but not guaranteed.