

25.3+/- Acres of Development Potential Lincoln County, MS



This 25.3+/- acre tract in Lincoln County, MS is located just blocks from the heart of Brookhaven. The unimproved property offers tons of development potential with great road frontage on South First Street as well as access to the railroad. The new residential development on the adjoining property may help peak someone's interest in developing this one as well! Call Eli today to schedule a viewing!

Directions from Brookhaven, MS: From downtown Brookhaven at the court house, travel 1 mile south on First Street and the property will be on your right.



**CLIF
CANNON**
REALTOR®

Office: 601.990.5070
Cell: 601.565.1070
Clif@TomSmithLand.com



A Real Estate Expert You Can Trust

TomSmithLandandHomes.com

Information is believed to be accurate but not guaranteed.





CLIF CANNON

REALTOR®

Office: 601.990.5070

Cell: 601.565.1070

Clif@TomSmithLand.com



A Real Estate Expert You Can Trust

TomSmithLandandHomes.com

Information is believed to be accurate but not guaranteed.



Aerial Map



Flood Map

CLIF CANNON

REALTOR®

Office: 601.990.5070

Cell: 601.565.1070

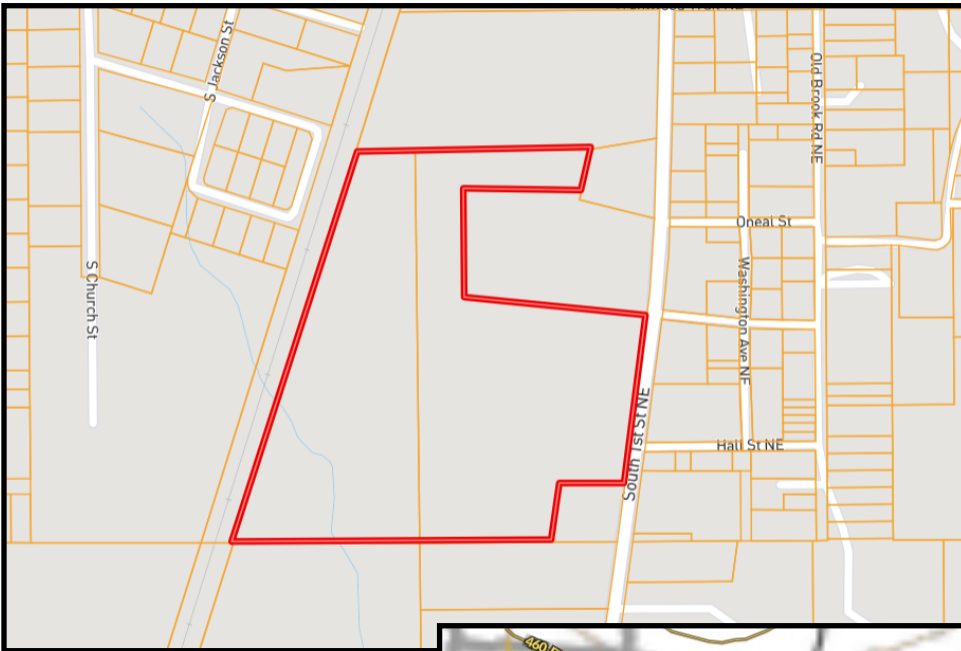
Clif@TomSmithLand.com



A Real Estate Expert You Can Trust
TomSmithLandandHomes.com

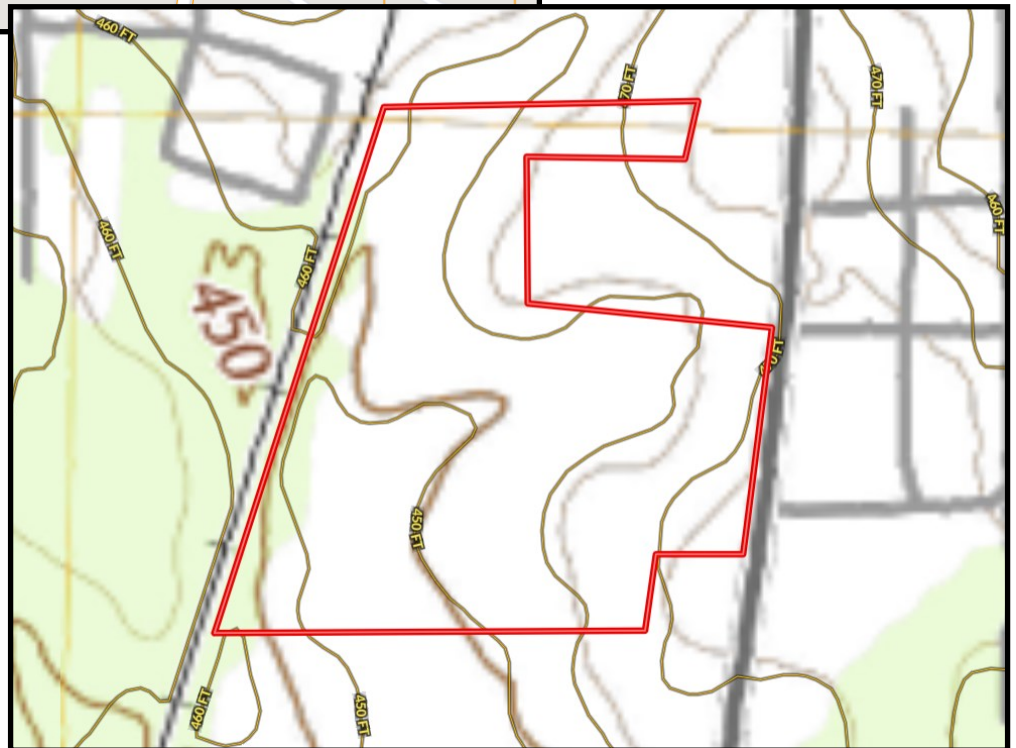
Information is believed to be accurate but not guaranteed.





Ownership
Map

Topo
Map



CLIF CANNON

REALTOR®

Office: 601.990.5070

Cell: 601.565.1070

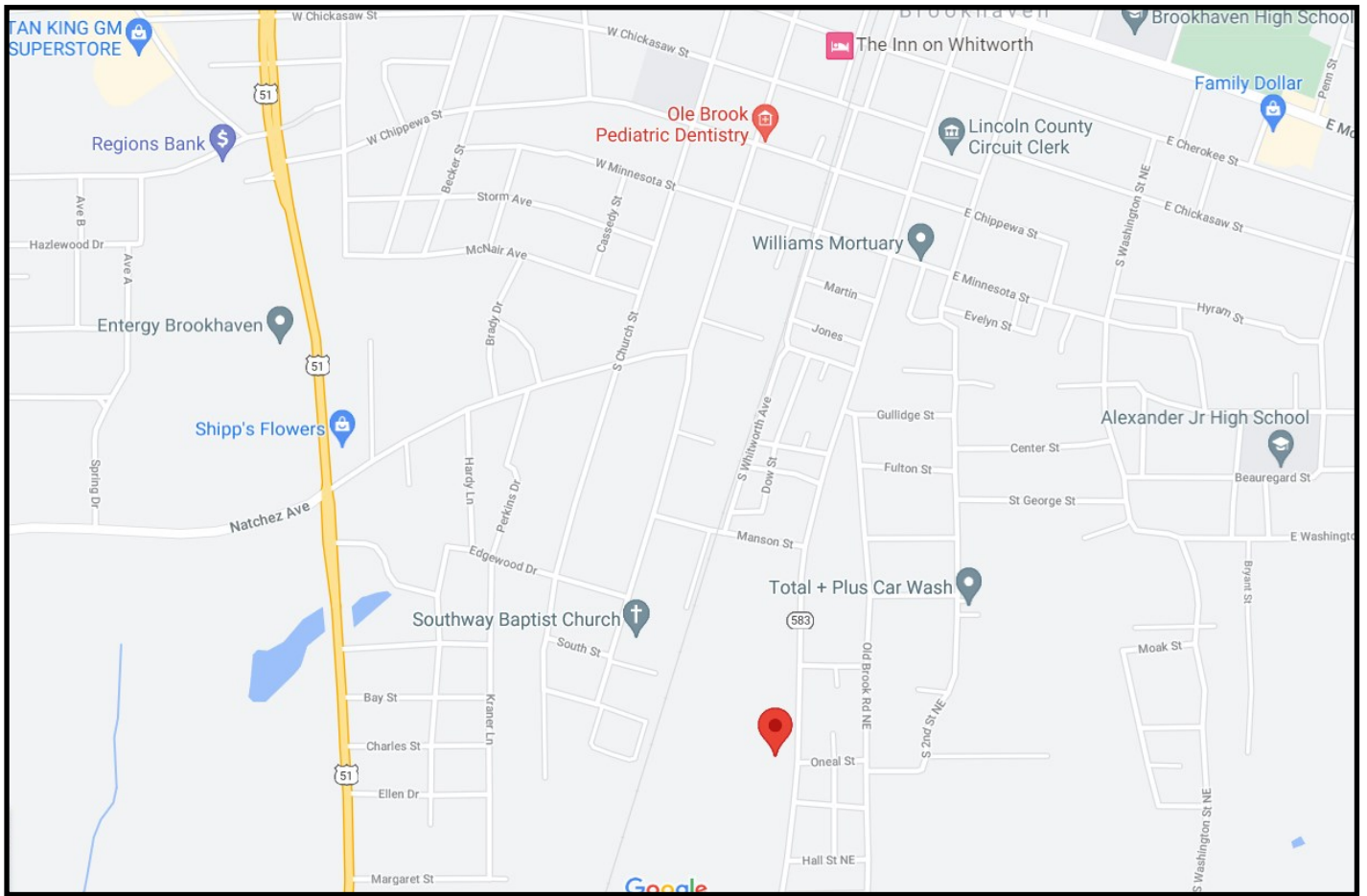
Clif@TomSmithLand.com



A Real Estate Expert You Can Trust
TomSmithLandandHomes.com

Information is believed to be accurate but not guaranteed.





Directional Map

Directions from Brookhaven, MS: From downtown Brookhaven at the court house, travel 1 mile south on First Street and the property will be on your right.

CLIF CANNON

REALTOR®

Office: 601.990.5070

Cell: 601.565.1070

Clif@TomSmithLand.com



A Real Estate Expert You Can Trust

TomSmithLandandHomes.com

Information is believed to be accurate but not guaranteed.

