

41+/- Acre Recreational Tract Walthall County, MS



24 Willie Roberts Road Jayess, MS 39641

This Walthall County, MS recreational tract has it all! The second you step on to this property you realize that it is set up for a great hunting getaway. This 41+/- acre property in Jayess has a very secluded feel. There is a nice pond and open area set up for a camper with water and power on site. Food plots with deer stands are in place as well as roads for easy access. There is something special about this one! Act fast! Call Eli today to schedule a viewing!

Directions from Jayess, MS: From the intersection of Hwy 44 and Hwy 583, travel south on 583 for 3 miles and turn left onto Enon-Sartinville Road. Travel 3.4 miles and turn right onto Flat Land Road. Travel 1 mile and turn right onto Willie Roberts Road, the property is at the dead end.



Call me today!

ELI FERGUSON, REALTOR®
Eli@TomSmithLand.com
601.990.5070 office | 601.757.7117 cell



TomSmithLandandHomes.com

Information is believed to be accurate but not guaranteed.



LandReport
2011-2020
AMERICA'S
BEST
BROKERAGES

Proud to be
C2EX
endorsed!

Call me today!

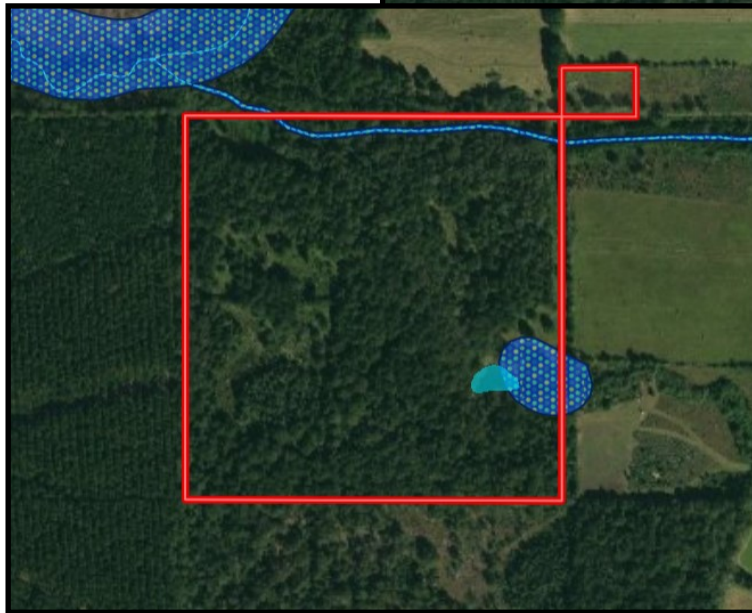
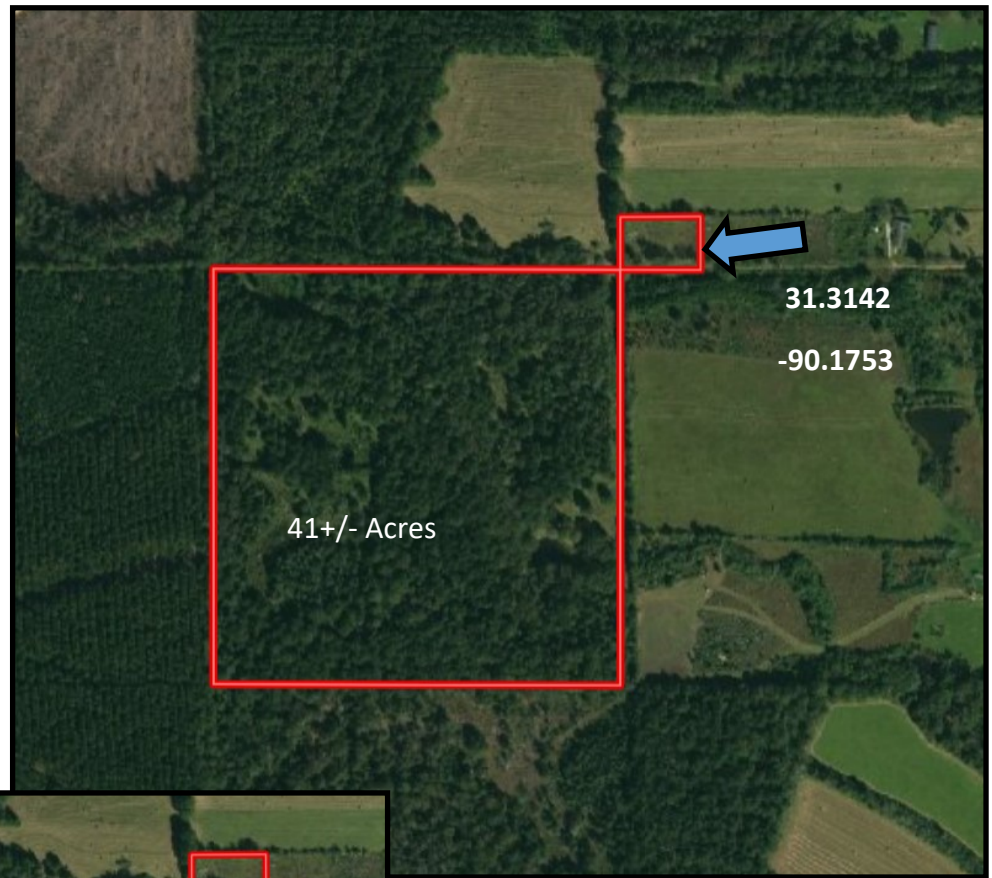
ELI FERGUSON, REALTOR®
Eli@TomSmithLand.com
601.990.5070 office | 601.757.7117 cell



TomSmithLandandHomes.com

Information is believed to be accurate but not guaranteed.

Aerial Map



Flood Map



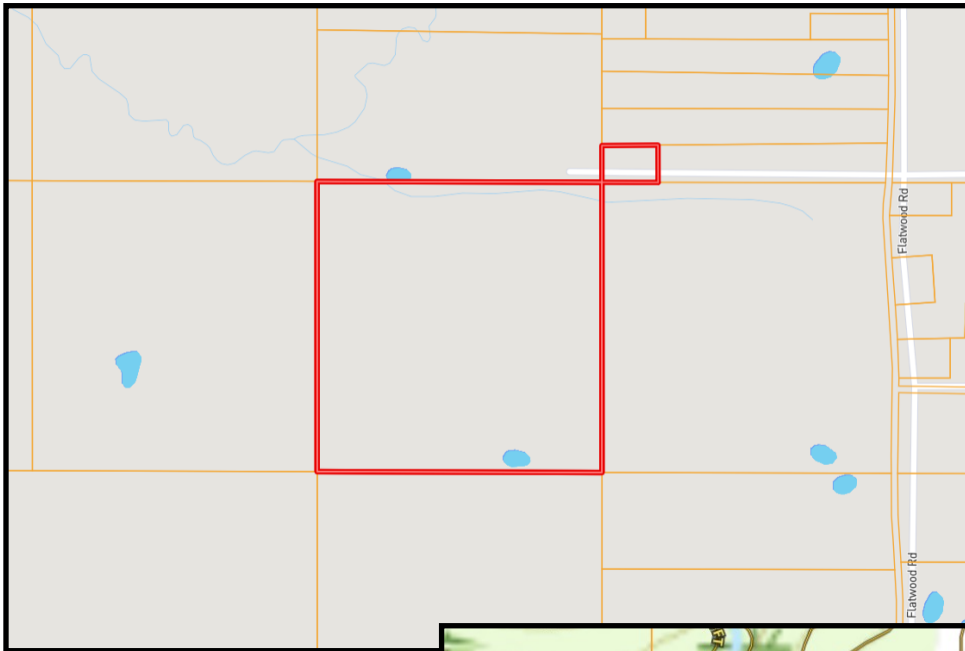
call me today!

ELI FERGUSON, REALTOR®
Eli@TomSmithLand.com
601.990.5070 office | 601.757.7117 cell



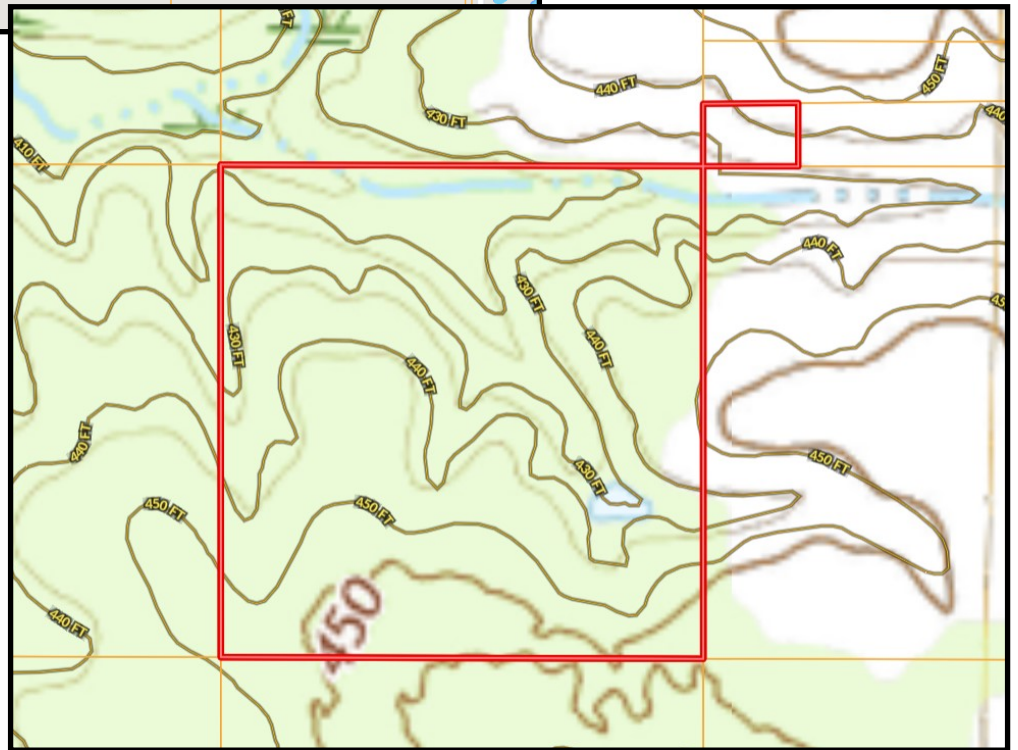
TomSmithLandandHomes.com

Information is believed to be accurate but not guaranteed.



Ownership
Map

Topo
Map



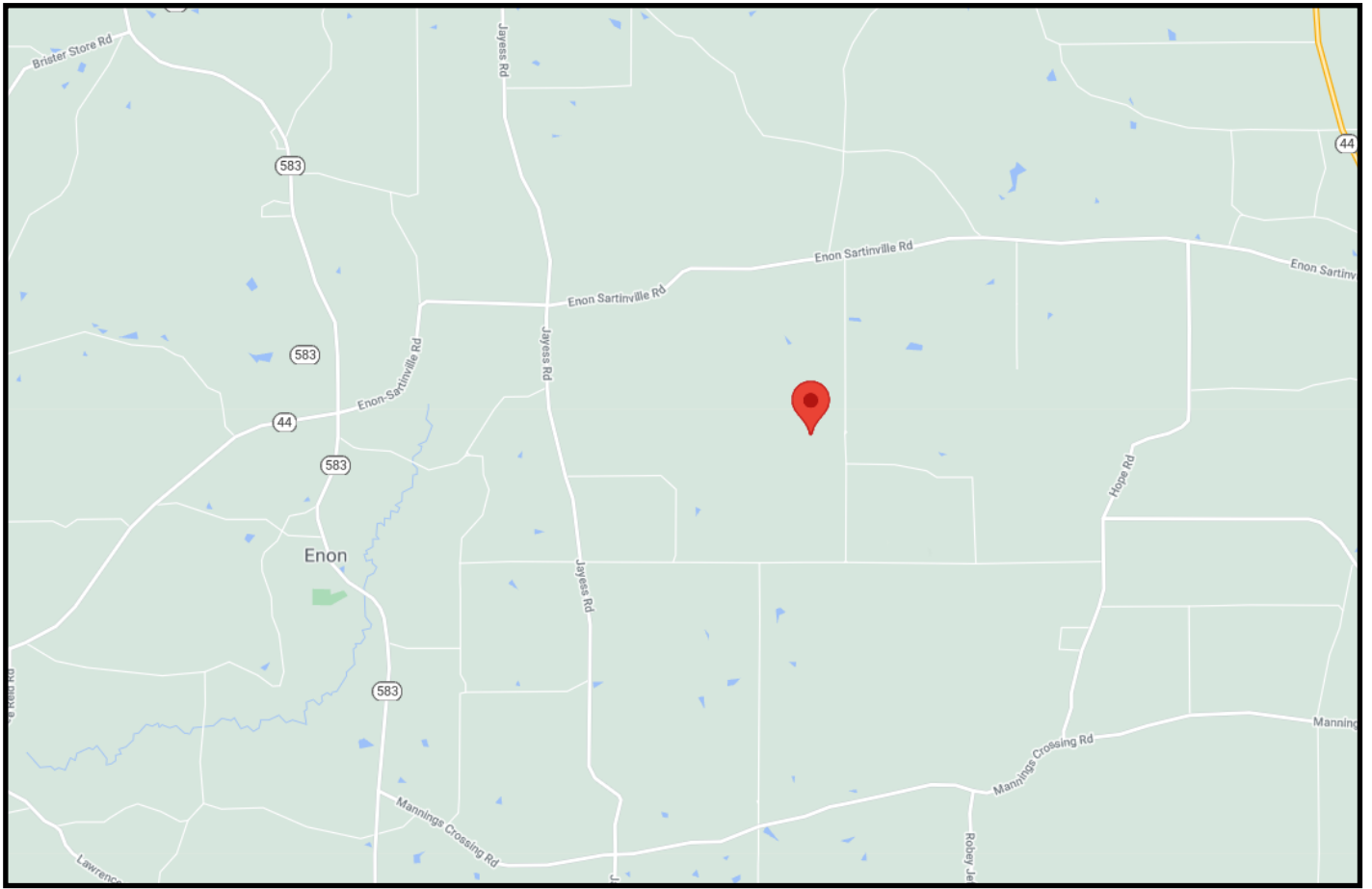
Call me today!

ELI FERGUSON, REALTOR®
Eli@TomSmithLand.com
601.990.5070 office | 601.757.7117 cell



TomSmithLandandHomes.com

Information is believed to be accurate but not guaranteed.



Directional Map

24 Willie Roberts Road Jayess, MS 39641

Directions from Jayess, MS: From the intersection of Hwy 44 and Hwy 583, travel south on 583 for 3 miles and turn left onto Enon-Sartinville Road. Travel 3.4 miles and turn right onto Flat Land Road. Travel 1 mile and turn right onto Willie Roberts Road, the property is at the dead end.



call me today!

ELI FERGUSON, REALTOR®
Eli@TomSmithLand.com
601.990.5070 office | 601.757.7117 cell



TomSmithLandandHomes.com

Information is believed to be accurate but not guaranteed.