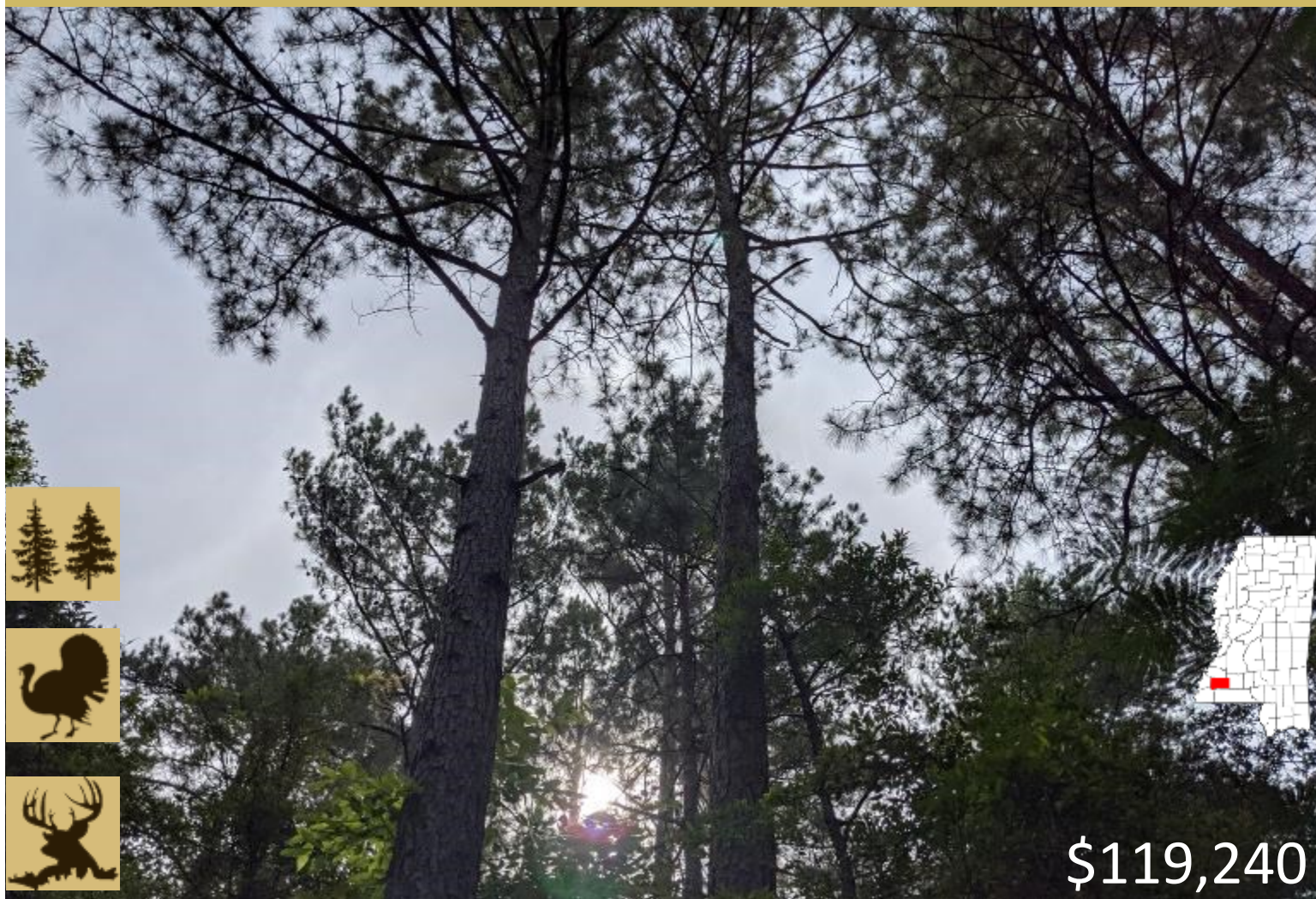


29.81+/- Acre Recreational Property in Franklin County, MS



\$119,240

Check out this 29.81+/- acre tract in the Smithdale community of Franklin County, MS. This superb tract is majority 20+/- year old pine with a few acres of mature pine on the north side. The planted pine is ready for thinning, further increasing the forage and habitat diversity in an area known for great deer and turkey hunting, and providing immediate revenue. Located at the corner of Nunnery Road and Burt Jordan Road, the property provides easy access to Hwy 98, and is just minutes from Lake Okhissa, Caston Creek WMA, and the Homochitto National Forest. An internal trail connects both roads and electrical power is available. Call Clif Cannon for a showing today.



call me today!

CLIF CANNON, REALTOR®
Clif@TomSmithLand.com
601.990.5070 office | 601.565.1070 cell



TomSmithLandandHomes.com

Information is believed to be accurate but not guaranteed.



CLIF CANNON, REALTOR®

Clif@TomSmithLand.com

601.990.5070 office | 601.565.1070 cell



Expect More. Get More.

TomSmithLandandHomes.com

Information is believed to be accurate but not guaranteed.



29.81+/- Acres

31.3877, -90.6642

Aerial Map



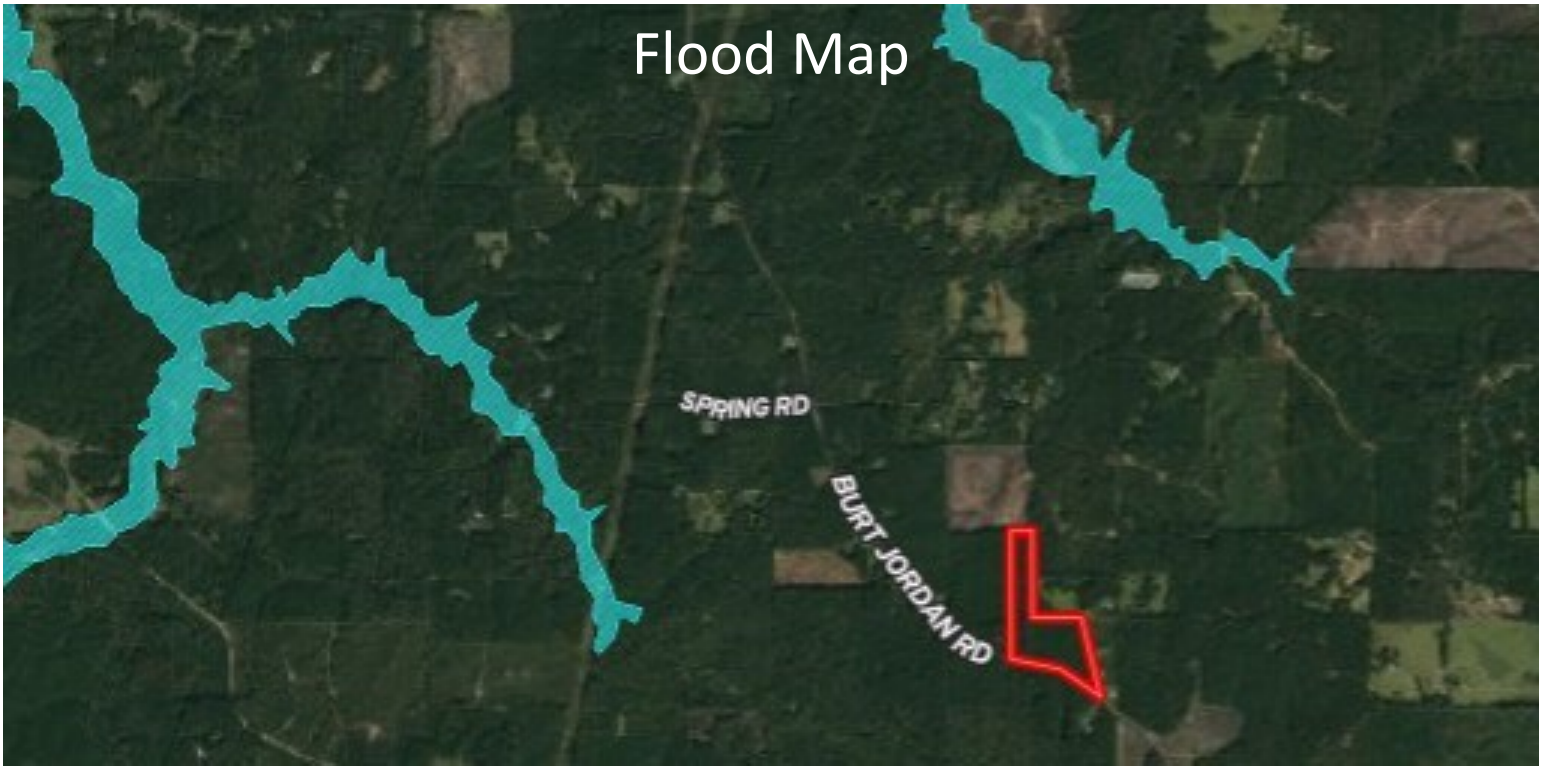
CLIF CANNON, REALTOR®
Clif@TomSmithLand.com
601.990.5070 office | 601.565.1070 cell



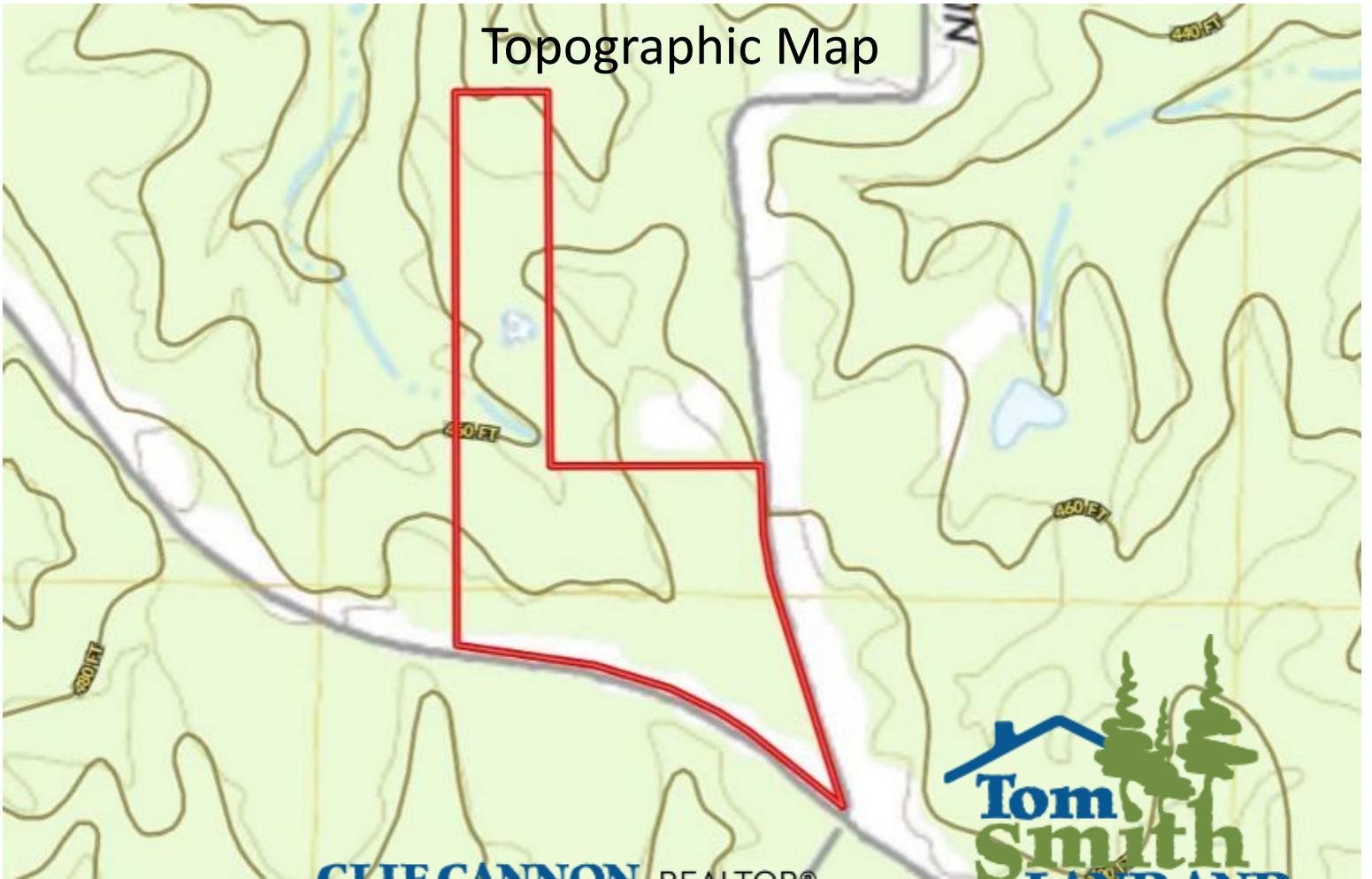
TomSmithLandandHomes.com

Information is believed to be accurate but not guaranteed.

Flood Map



Topographic Map



CLIF CANNON, REALTOR®

Clif@TomSmithLand.com

601.990.5070 office | 601.565.1070 cell



Expect More. Get More.



TomSmithLandandHomes.com

Information is believed to be accurate but not guaranteed.

Ownership Map



CLIF CANNON, REALTOR®
Clif@TomSmithLand.com
601.990.5070 office | 601.565.1070 cell



TomSmithLandandHomes.com

Information is believed to be accurate but not guaranteed.

Directional Map



Directions from the Intersection of I-55 and US-98W in Summit, MS: Travel west on US-98 for 10.8 miles. Turn right onto Burt Jordan Road and travel for 2.2 miles. The property will be on the right.



CLIF CANNON, REALTOR®
Clif@TomSmithLand.com
601.990.5070 office | 601.565.1070 cell



TomSmithLandandHomes.com

Information is believed to be accurate but not guaranteed.