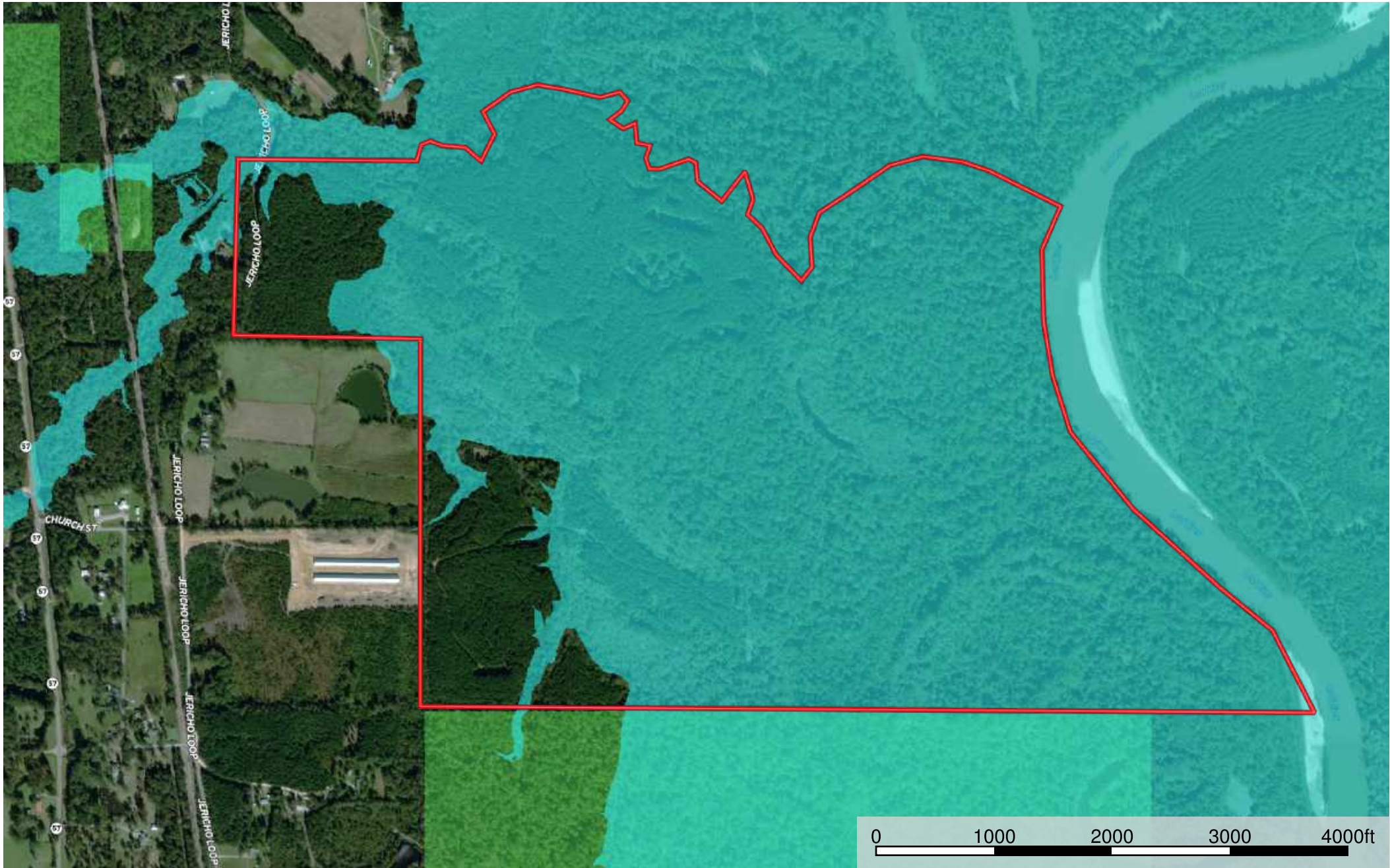
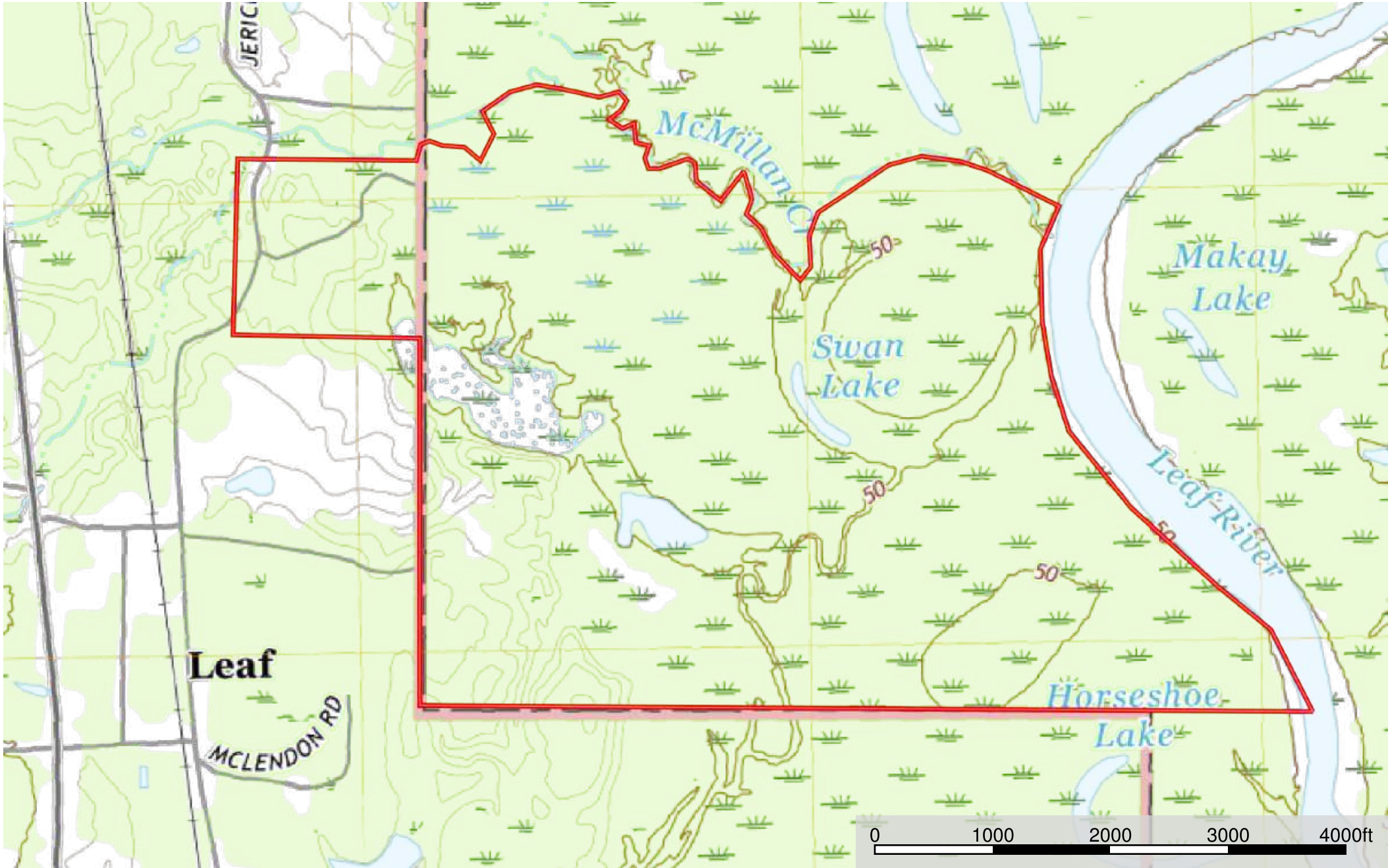
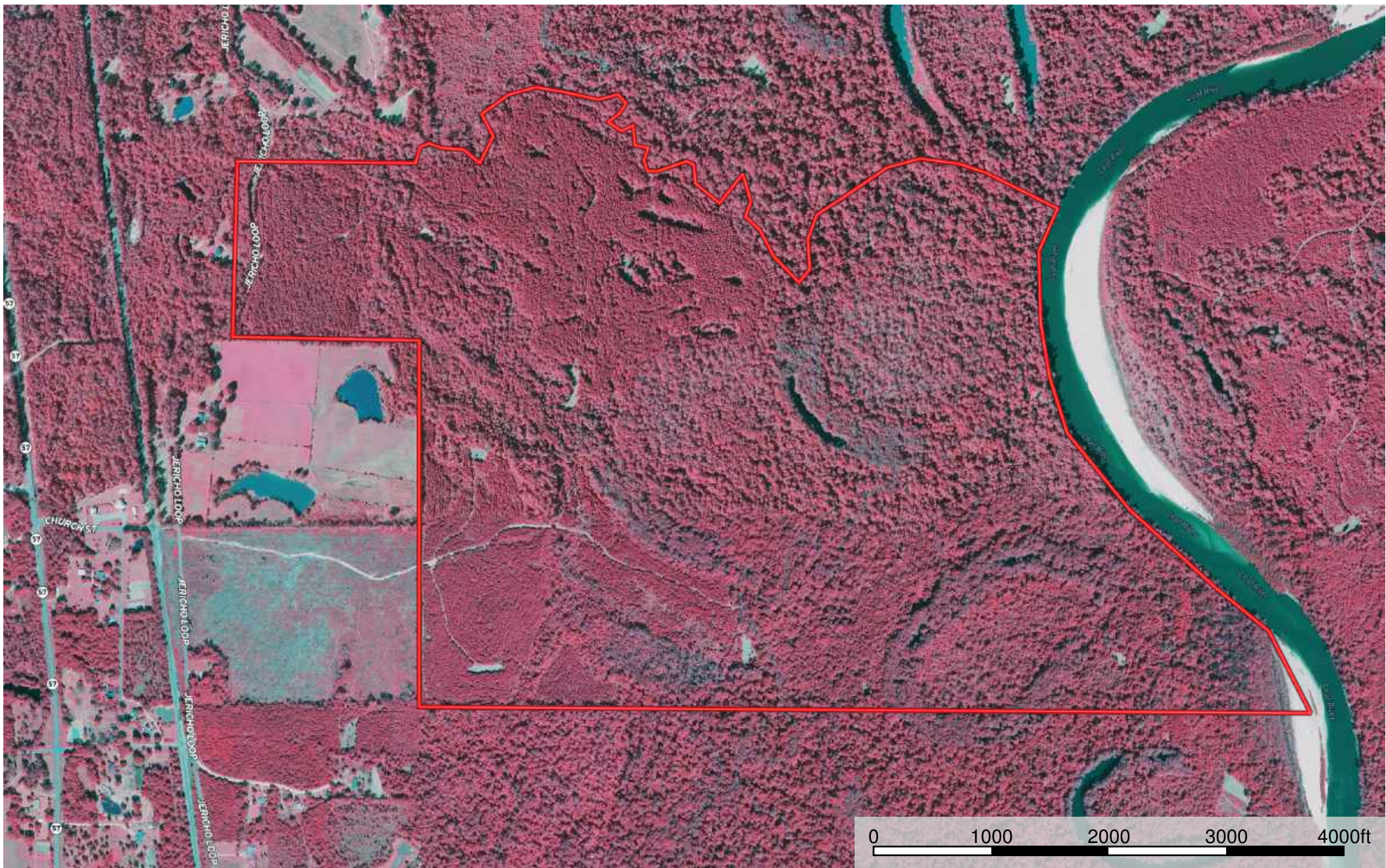


- Boundary
- Forest Service
- State Land
- Fish and Wildlife
- National Park
- Other
- BLM
- Local Governm
- Conservat ion

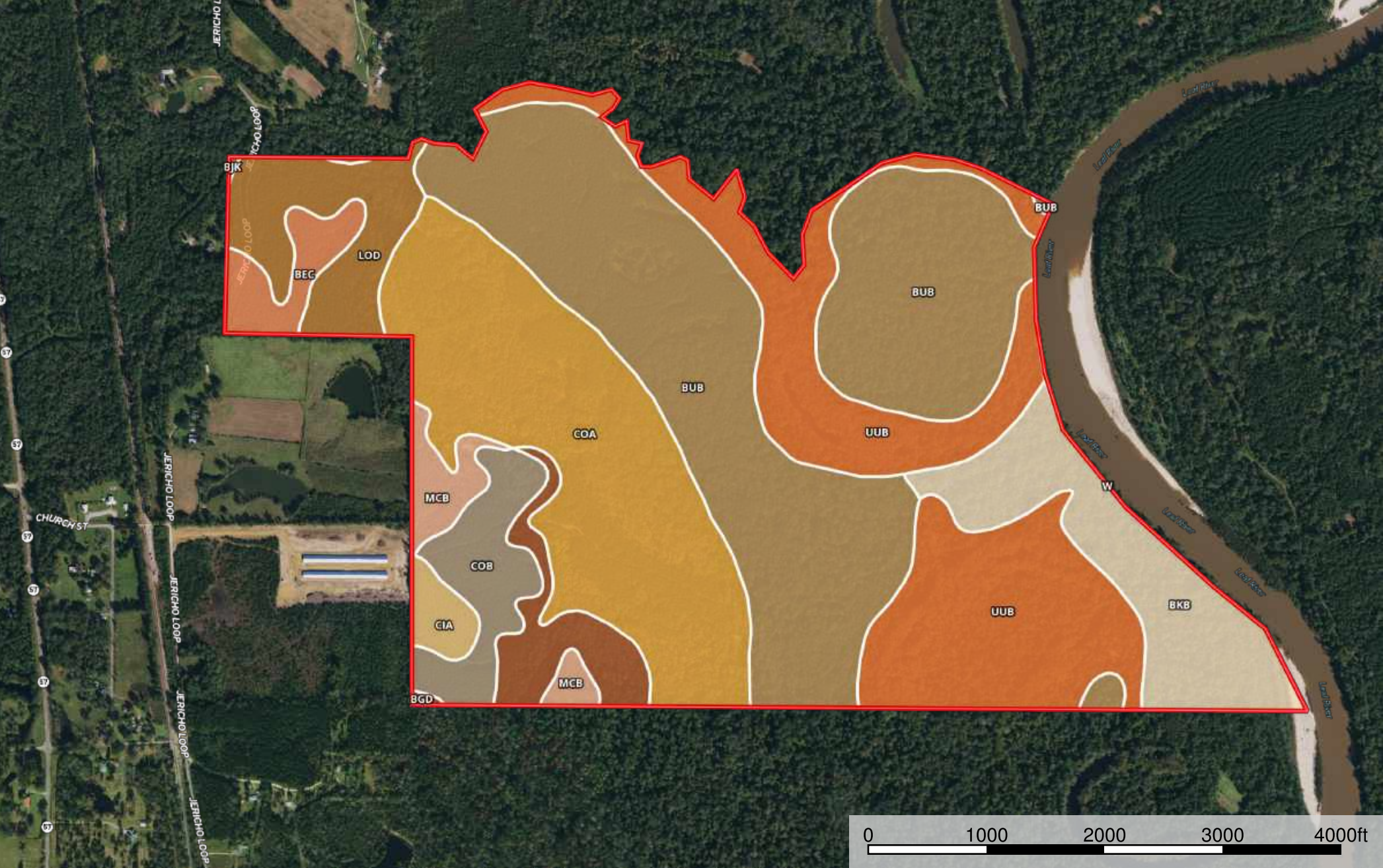





 Boundary



 Boundary



 Boundary

|  507.5 ac






SOIL CODE	SOIL DESCRIPTION	ACRES	%	CAP
BuB	Buckatunna-Mooreville complex, gently undulating, rarely flooded	172.0	33.9	4w
UuB	Urbo-Mooreville-Una complex, 0 to 3 percent slopes, frequently flooded	102.1	20.11	5w
BkB	Bigbee loamy sand, 0 to 5 percent slopes, occasionally flooded	44.2	8.71	3s
CoA	Columbus fine sandy loam, 0 to 2 percent slopes, rarely flooded	98.9	19.49	2w
BgD	Benndale-Rutan complex, 8 to 15 percent slopes	16.4	3.24	4e
CoB	Columbus fine sandy loam, 2 to 5 percent slopes, rarely flooded	20.9	4.12	3e
McB	McLaurin fine sandy loam, 2 to 5 percent slopes	10.2	2.01	2e
BeC	Benndale fine sandy loam, 5 to 8 percent slopes	10.6	2.08	3e
CiA	Chicora fine sandy loam, 0 to 2 percent slopes	5.6	1.11	2w
LoD	Lorman fine sandy loam, 5 to 15 percent slopes	26.2	5.16	4e
BJK	Bibb, Johnston and Kinston soils, 0 to 1 percent slopes, frequently flooded	0.2	0.04	5w
W	Water	0.2	0.03	-
TOTALS		507.5	100%	3.6

Capability Legend

Increased Limitations and Hazards

Decreased Adaptability and Freedom of Choice Users

Land, Capability

								
	1	2	3	4	5	6	7	8
'Wild Life'	•	•	•	•	•	•	•	•
Forestry	•	•	•	•	•	•	•	
Limited	•	•	•	•	•	•	•	
Moderate	•	•	•	•	•	•		
Intense	•	•	•	•	•			
Limited	•	•	•	•				
Moderate	•	•	•					
Intense	•	•						
Very Intense	•							

Grazing Cultivation

(c) climatic limitations (e) susceptibility to erosion

(s) soil limitations within the rooting zone (w) excess of water