

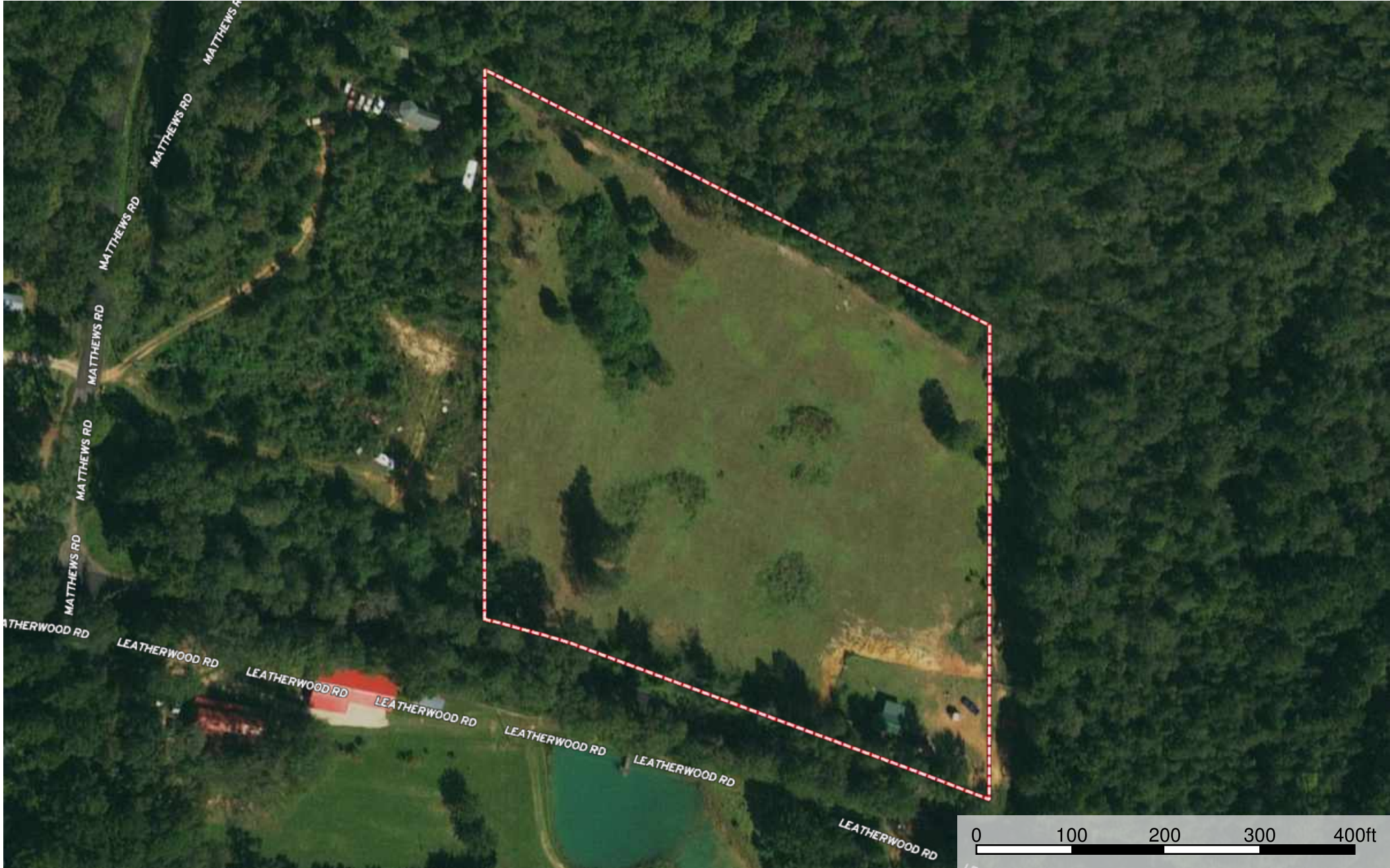
3146 Leatherwood Road (Tylertown)  
Pike County, Mississippi, 5.04 AC +/-




Boundary

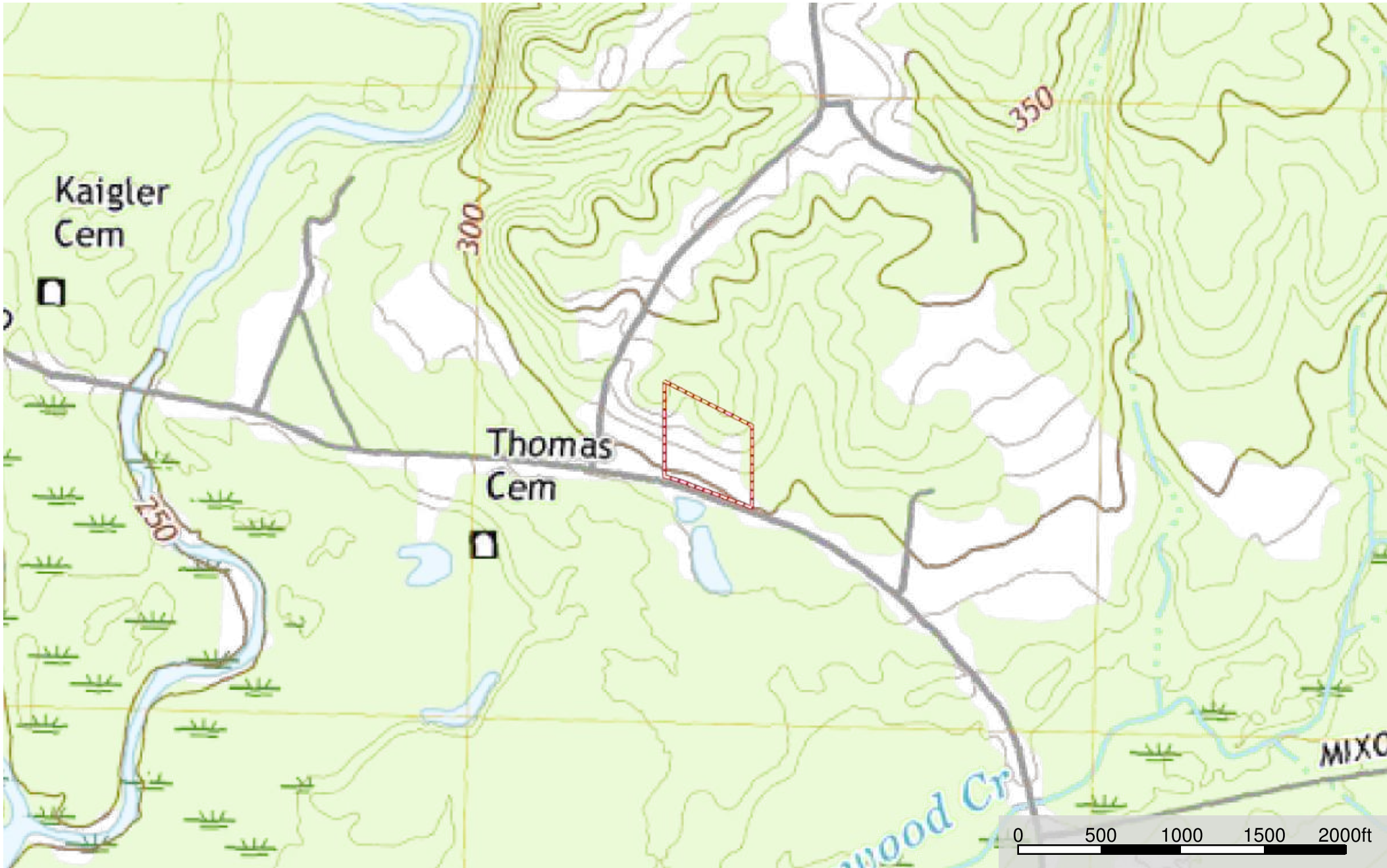



3146 Leatherwood Road (Tylertown)  
Pike County, Mississippi, 5.04 AC +/-



 Boundary






 Boundary





 Boundary

| 4.8 ac

SOIL CODE	SOIL DESCRIPTION	ACRES	%	CAP
OfB2	Ora fine sandy loam, 2 to 5 percent slopes, eroded	1.1	23.3	2e
SaF	Saffell gravelly fine sandy loam, 17 to 35 percent slopes	0.7	13.83	7e
OrC2	Ora-Ruston complex, 5 to 8 percent slopes, eroded	2.1	43.79	3e
SnB2	Savannah silt loam, 2 to 5 percent slopes, eroded	0.9	19.08	2e
TOTALS		4.8	100%	3.13

## Capability Legend

Increased Limitations and Hazards

Decreased Adaptability and Freedom of Choice Users

Land, Capability

								
	1	2	3	4	5	6	7	8
'Wild Life'	•	•	•	•	•	•	•	•
Forestry	•	•	•	•	•	•	•	
Limited	•	•	•	•	•	•	•	
Moderate	•	•	•	•	•	•		
Intense	•	•	•	•	•			
Limited	•	•	•	•				
Moderate	•	•	•					
Intense	•	•						
Very Intense	•							

## Grazing Cultivation

(c) climatic limitations (e) susceptibility to erosion

(s) soil limitations within the rooting zone (w) excess of water