

*6.24 +/- Acres With Three Homes
Holmes County, MS*



Three Attractive Homes

Three Storage Buildings and One Shed

Residential and / or Rental

Beautiful Yard

\$149,000

Directions: From the intersection of Hwy 51 and Hwy 12 in Durant MS, travel north on Hwy 51 for 1.1 miles and turn left into the driveway: 17477 Hwy. 51 Durant, MS 39063

GPS: 33.1033, -89.8388



call me today!

SAM SAMPLE, REALTOR®

Sam@TomSmithLand.com

601.898.2772 office | 601.668.5697 cell



Expect More. Get More.

TomSmithLandandHomes.com

Information is believed to be accurate but not guaranteed.

This is a very attractive 6.24+/- acre Holmes County, MS home site consisting of three complete homes sharing a common yard. All homes have been well maintained.

The main home offers three bedrooms, two full baths and a metal roof. Walk-in closets are in two bedrooms. The home features simulated wood floors in the kitchen and master bedroom while carpet is in the living room and two other bedrooms. The single carport, directly in front of the home, keeps you dry and the vehicle protected from the elements. A very nice storage shed is available as well as another shed in the back yard for mowers and yard equipment.

The second home is a two bedroom, one bath, 52'x14' 1995 Oakland mobile home by Fleetwood. The roof was recently coated with a sealant in order to protect and extend the life of the roof. A concrete apron and skirting keep the area free from mud and gives the home a clean appearance and entrance area. A very nice storage shed with a concrete ramp for access is included. This home will make a great rental.

The third home offers three bedrooms, one spacious bath, a living room, dining room, laundry area and a metal roof. A nice storage shed is available for the lawn equipment. This home will make a great rental.

To schedule a showing of this property, call Sam Sample today!



SAM SAMPLE, REALTOR®
Sam@TomSmithLand.com
601.898.2772 office | 601.668.5697 cell



TomSmithLandandHomes.com

Information is believed to be accurate but not guaranteed.



SAM SAMPLE, REALTOR®
 Sam@TomSmithLand.com
 601.898.2772 office | 601.668.5697 cell



TomSmithLandandHomes.com

Information is believed to be accurate but not guaranteed.



SAM SAMPLE, REALTOR®
Sam@TomSmithLand.com
601.898.2772 office | 601.668.5697 cell



TomSmithLandandHomes.com

Information is believed to be accurate but not guaranteed.



SAM SAMPLE, REALTOR®
Sam@TomSmithLand.com
601.898.2772 office | 601.668.5697 cell



TomSmithLandandHomes.com

Information is believed to be accurate but not guaranteed.



SAM SAMPLE, REALTOR®
Sam@TomSmithLand.com
601.898.2772 office | 601.668.5697 cell



TomSmithLandandHomes.com

Information is believed to be accurate but not guaranteed.



Aerial Map

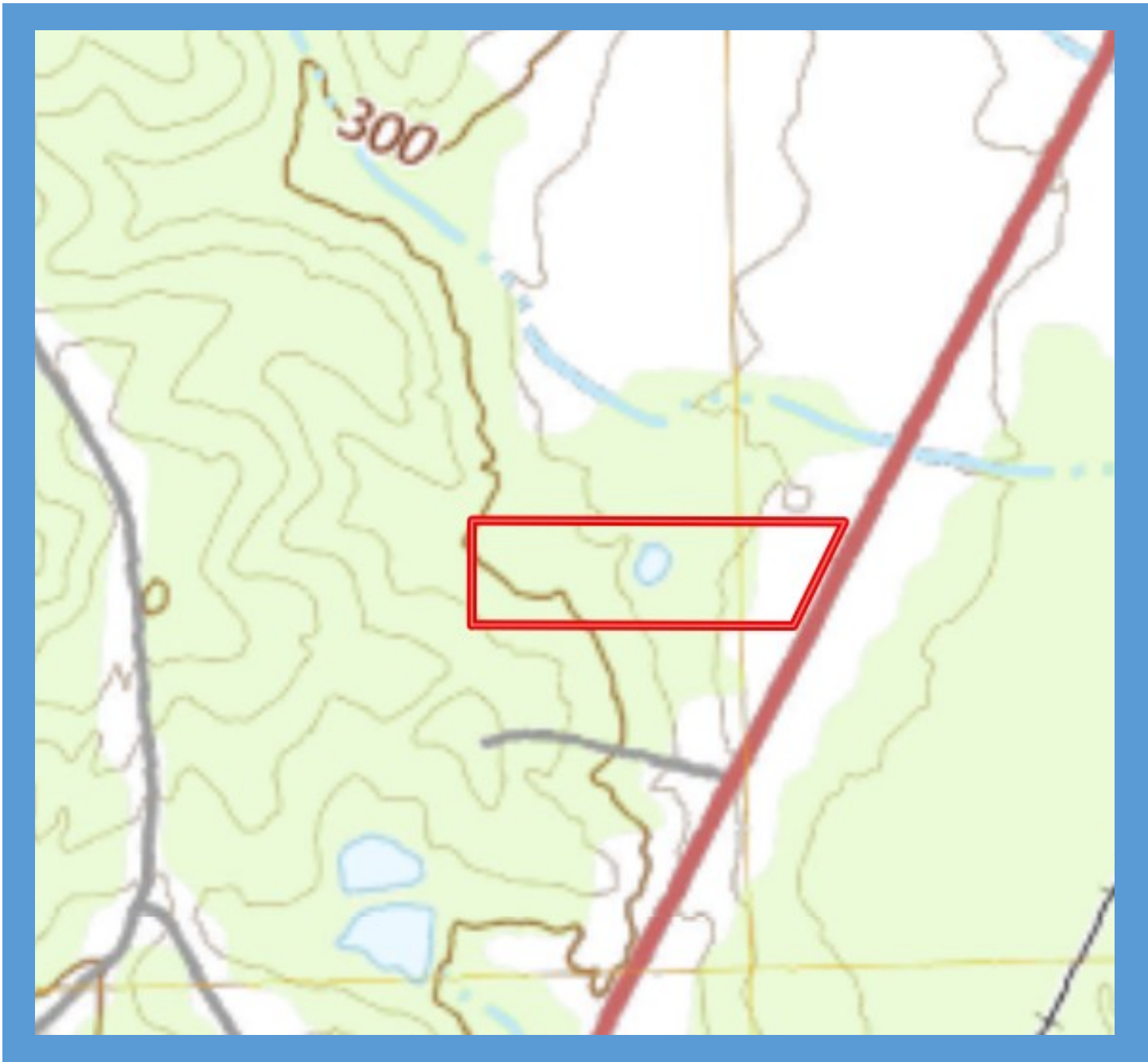


SAM SAMPLE, REALTOR®
Sam@TomSmithLand.com
601.898.2772 office | 601.668.5697 cell

Expect More. Get More.

TomSmithLandandHomes.com

Information is believed to be accurate but not guaranteed.



Topo Map

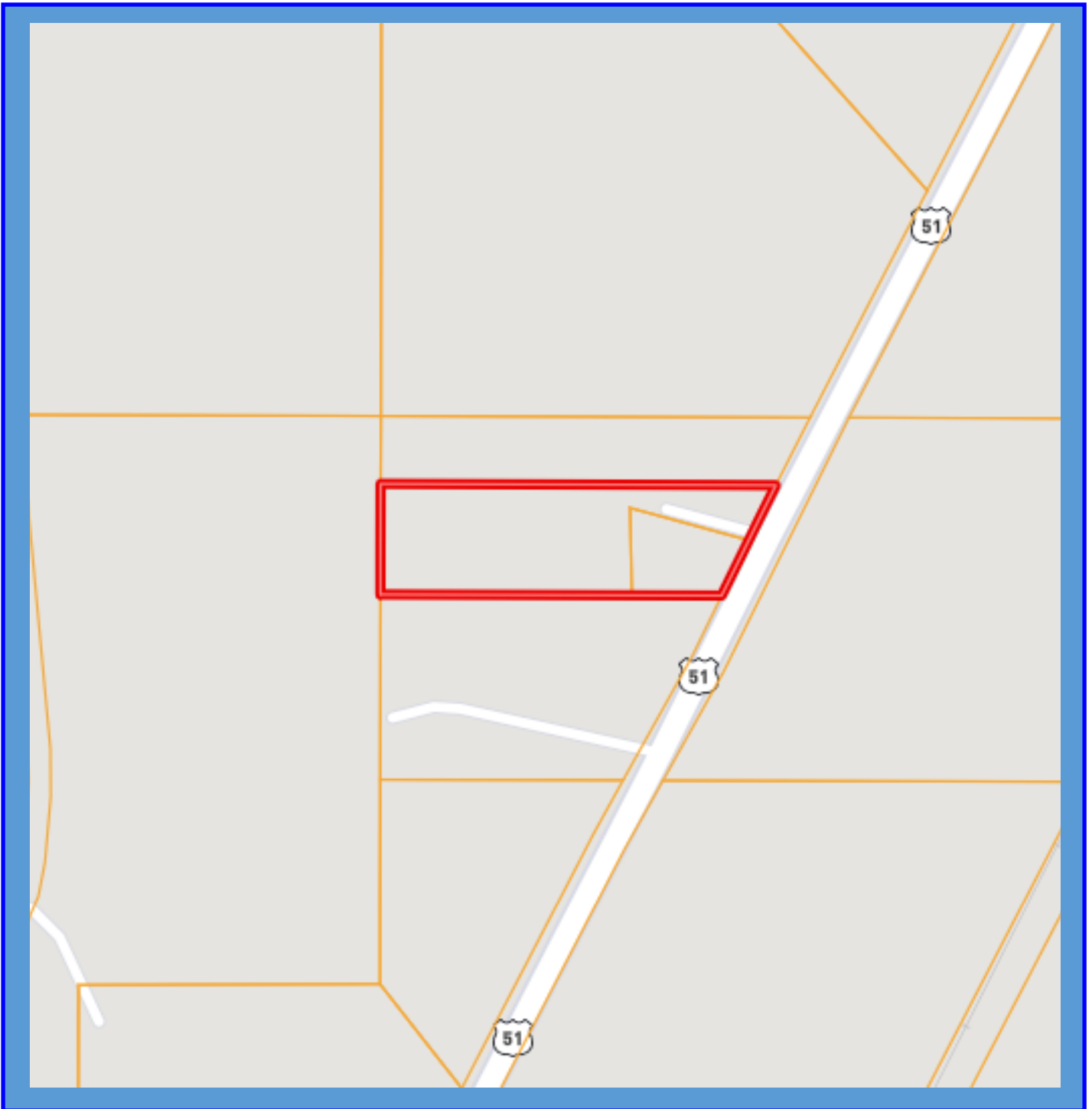


SAM SAMPLE, REALTOR®
Sam@TomSmithLand.com
601.898.2772 office | 601.668.5697 cell

Expect More. Get More.

TomSmithLandandHomes.com

Information is believed to be accurate but not guaranteed.



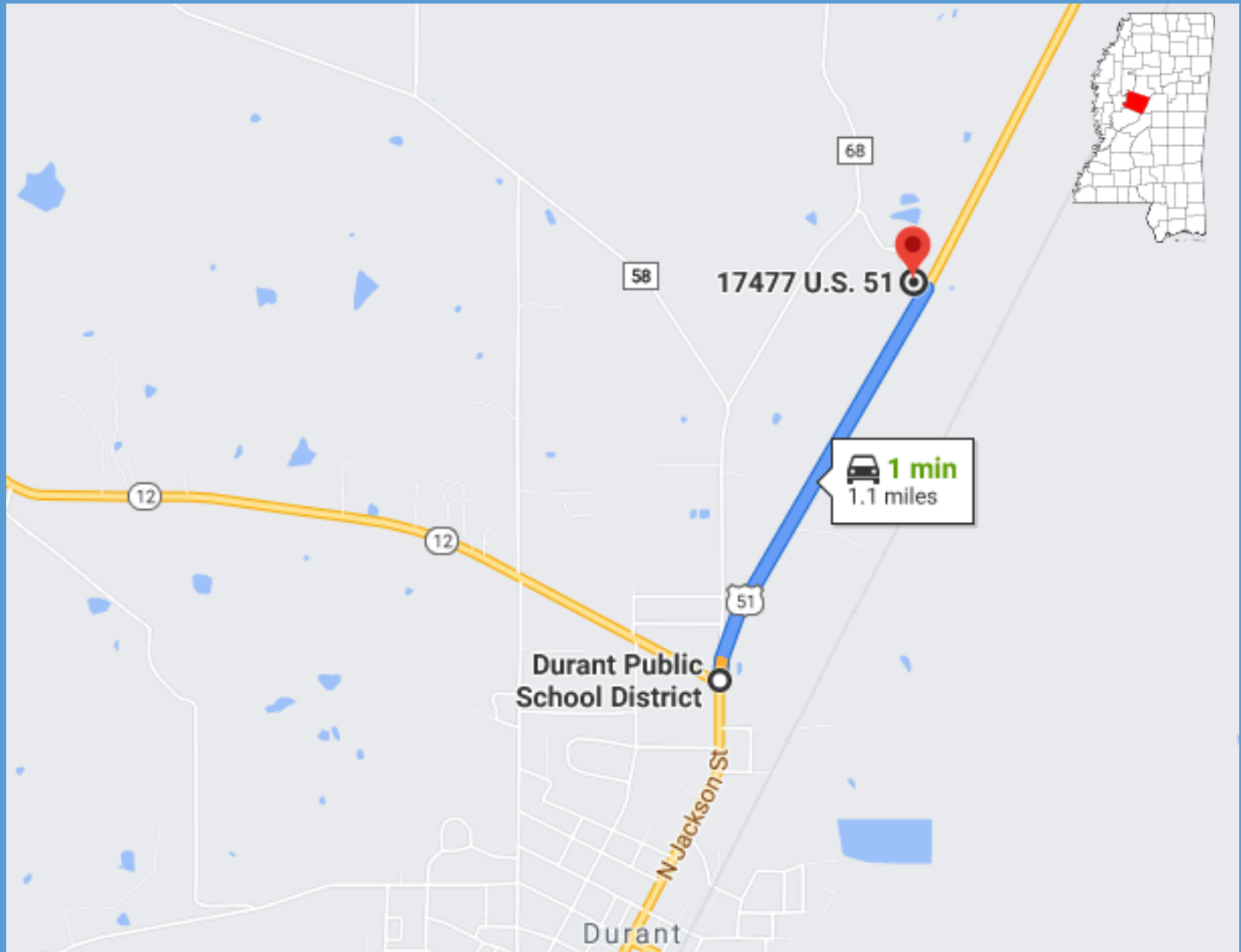
Ownership Map



SAM SAMPLE, REALTOR®
Sam@TomSmithLand.com
601.898.2772 office | 601.668.5697 cell

TomSmithLandandHomes.com

Information is believed to be accurate but not guaranteed.



Directions: From the intersection of Hwy 51 and Hwy 12 in Durant MS, travel north on Hwy 51 for 1.1 miles and turn left into the driveway: 17477 Hwy. 51 Durant, MS 39063. **GPS: 33.1033, -89.8388**

Directional Map



SAM SAMPLE, REALTOR®
Sam@TomSmithLand.com
601.898.2772 office | 601.668.5697 cell



Expect More. Get More.

TomSmithLandandHomes.com

Information is believed to be accurate but not guaranteed.