

17+/- ACRE ESTATE LEAKE COUNTY, MS



\$790,000

819 HWY 25 Carthage, MS 39051

Take a look at this one-of-a kind estate in Leake County, MS. The 17+/- acre property features a magnificent, custom built, 4,000+/- square foot home, a 40x40 metal work shop with a separate tool room and a covered dog kennel area on the side, a stocked 2+/- acre pond and a creek. Nothing was spared in the construction of this dream home! Built in 2007, the two-story, three bedroom, three bath home offers 14 foot ceilings, hardwood floors throughout, Viking appliances, a walk-thru shower and separate Jacuzzi tub in the master bath, a bonus/media room with a balcony and a three car garage. The covered patio, in-ground pool with liner and manicured landscaping provide a perfect place to entertain guests. This property has a long private drive and is a must see to appreciate. With road frontage on HWY 25 in Carthage, it is in a great location and convenient to Jackson and Starkville!!! Call Preston today to schedule a viewing!

Directions from MS-35 N toward W Henderson Street in Carthage, MS: Turn left onto MS-429N/ Red Dog Road. Travel 2.4 miles and turn left onto MS-25 S. Travel 0.4 miles and the property will be on the left. Address: 819 HWY 25 Carthage, MS 39051



Call me today!

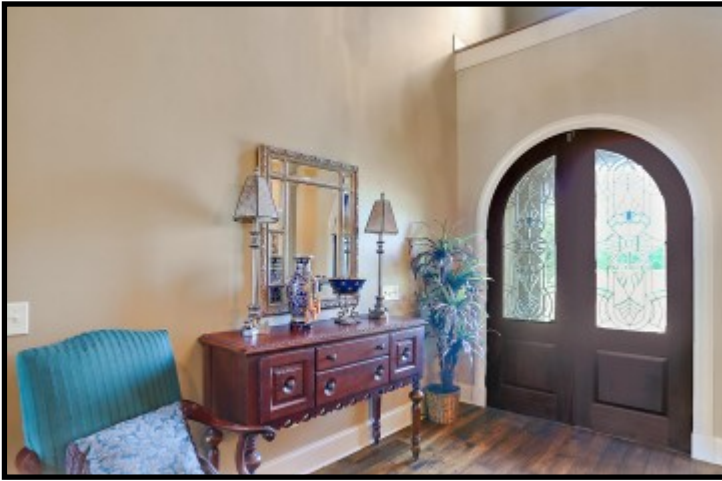
PRESTON SMITH, MANAGING BROKER
Preston@TomSmithLand.com
601.990.5070 office | 601.209.7150 cell



Expect More. Get More.

TomSmithLandandHomes.com

Information is believed to be accurate but not guaranteed.



Call me today!

PRESTON SMITH, MANAGING BROKER
Preston@TomSmithLand.com
601.990.5070 office | 601.209.7150 cell



TomSmithLandandHomes.com

Information is believed to be accurate but not guaranteed.



Call me today!

PRESTON SMITH, MANAGING BROKER
Preston@TomSmithLand.com
601.990.5070 office | 601.209.7150 cell



Expect More. Get More.

TomSmithLandandHomes.com

Information is believed to be accurate but not guaranteed.



Call me today!

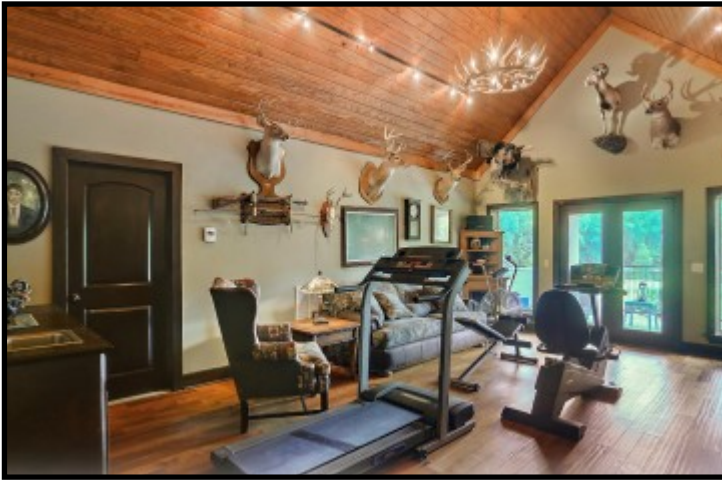
PRESTON SMITH, MANAGING BROKER
Preston@TomSmithLand.com
601.990.5070 office | 601.209.7150 cell



Expect More. Get More.

TomSmithLandandHomes.com

Information is believed to be accurate but not guaranteed.



Call me today!

PRESTON SMITH, MANAGING BROKER
Preston@TomSmithLand.com
601.990.5070 office | 601.209.7150 cell



TomSmithLandandHomes.com

Information is believed to be accurate but not guaranteed.



Call me today!

PRESTON SMITH, MANAGING BROKER
Preston@TomSmithLand.com
601.990.5070 office | 601.209.7150 cell



TomSmithLandandHomes.com

Information is believed to be accurate but not guaranteed.

AERIAL MAP



FLOOD MAP



call me today!

PRESTON SMITH, MANAGING BROKER

Preston@TomSmithLand.com

601.990.5070 office | 601.209.7150 cell



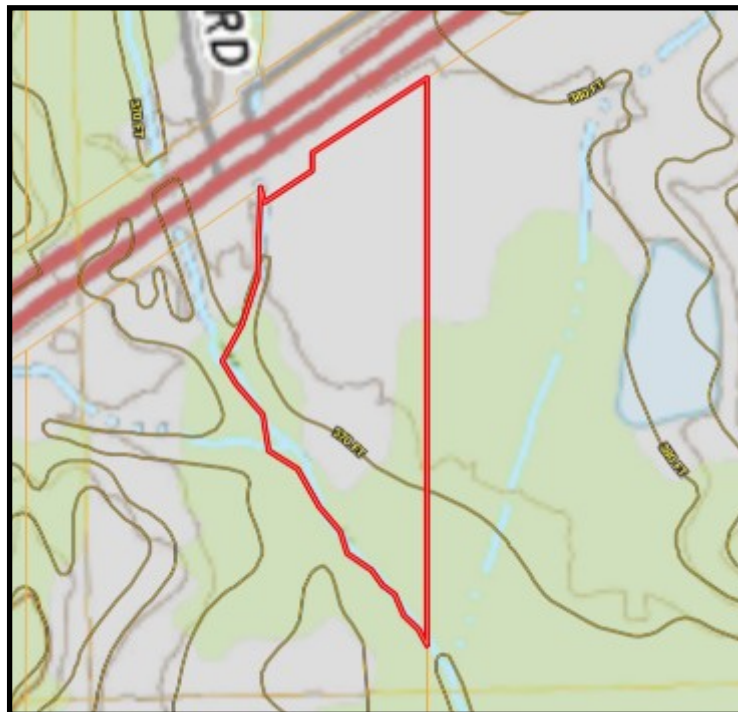
Expect More. Get More.

TomSmithLandandHomes.com

Information is believed to be accurate but not guaranteed.



OWNERSHIP MAP



TOPO MAP



call me today!

PRESTON SMITH, MANAGING BROKER

Preston@TomSmithLand.com

601.990.5070 office | 601.209.7150 cell



Expect More. Get More.

TomSmithLandandHomes.com

Information is believed to be accurate but not guaranteed.





DIRECTIONAL MAP

Directions from MS-35 N toward W Henderson Street in Carthage, MS: Turn left onto MS-429N/ Red Dog Road. Travel 2.4 miles and turn left onto MS-25 S. Travel 0.4 miles and the property will be on the left. Address: 819 HWY 25 Carthage, MS 39051



call me today!

PRESTON SMITH, MANAGING BROKER

Preston@TomSmithLand.com

601.990.5070 office | 601.209.7150 cell



Expect More. Get More.

TomSmithLandandHomes.com

Information is believed to be accurate but not guaranteed.