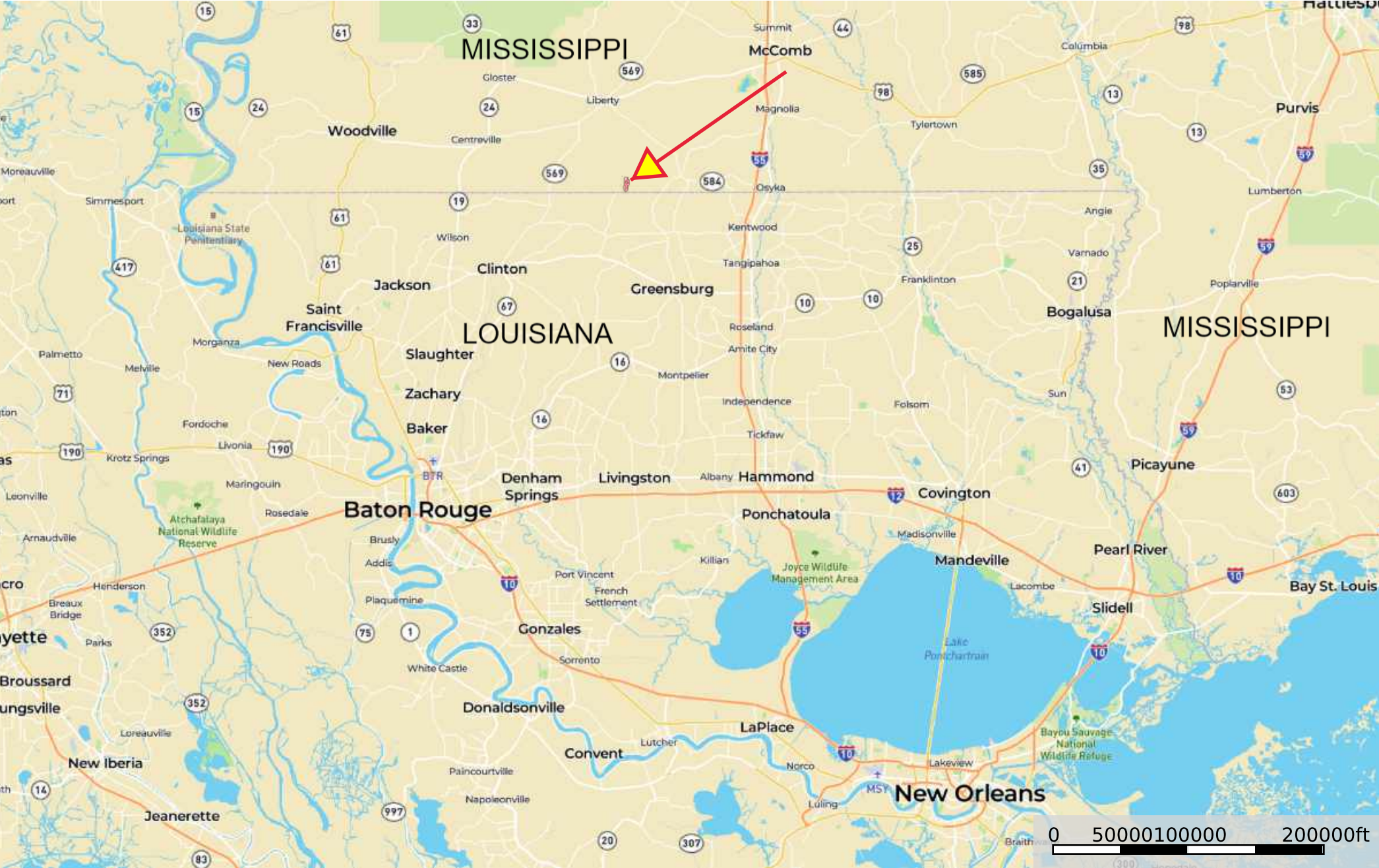



BB Hurst Bean/Loop Rd
Amite County, Mississippi, 304 AC +/-

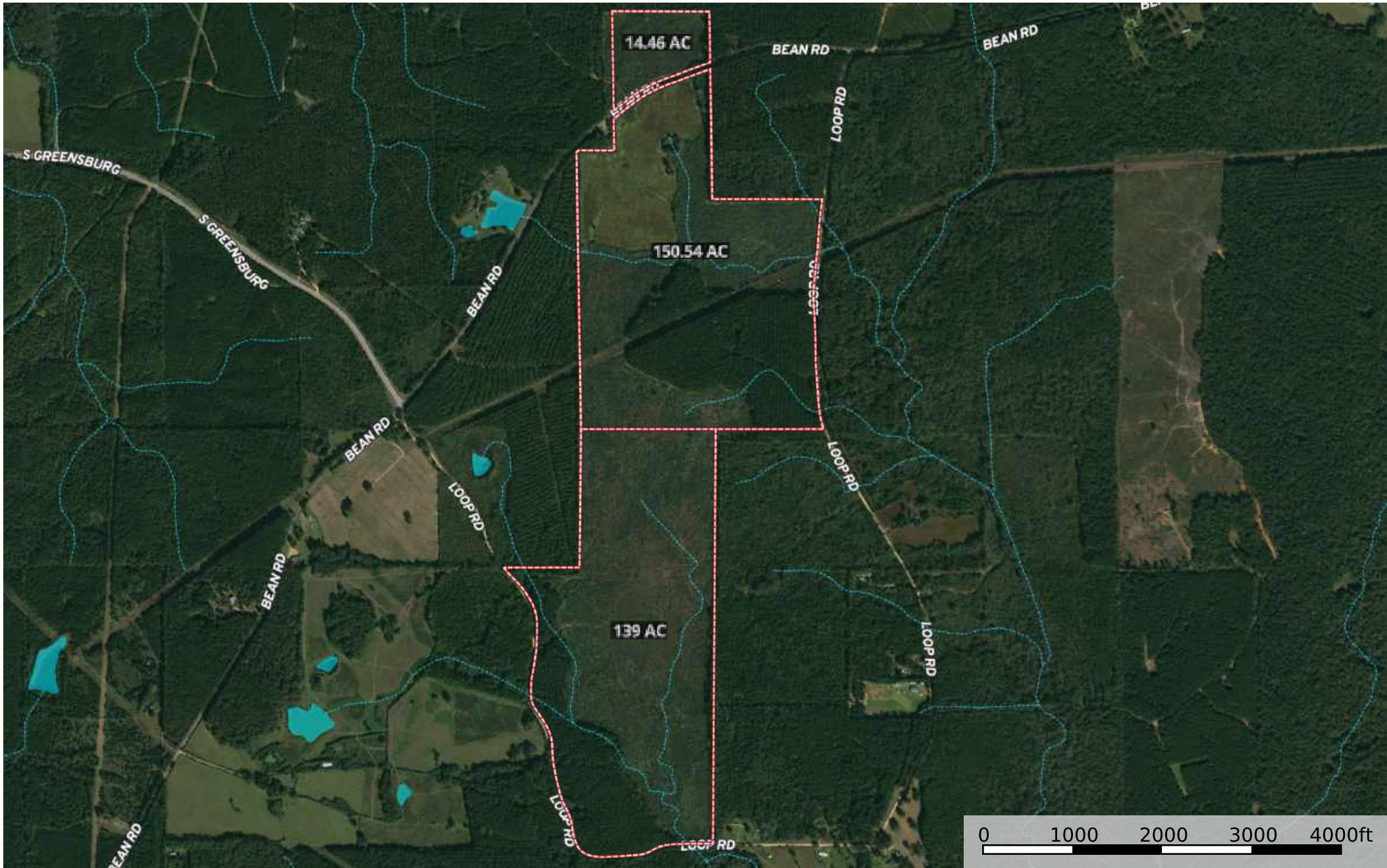






BB Hurst Bean/Loop Rd
Amite County, Mississippi, 304 AC +/-



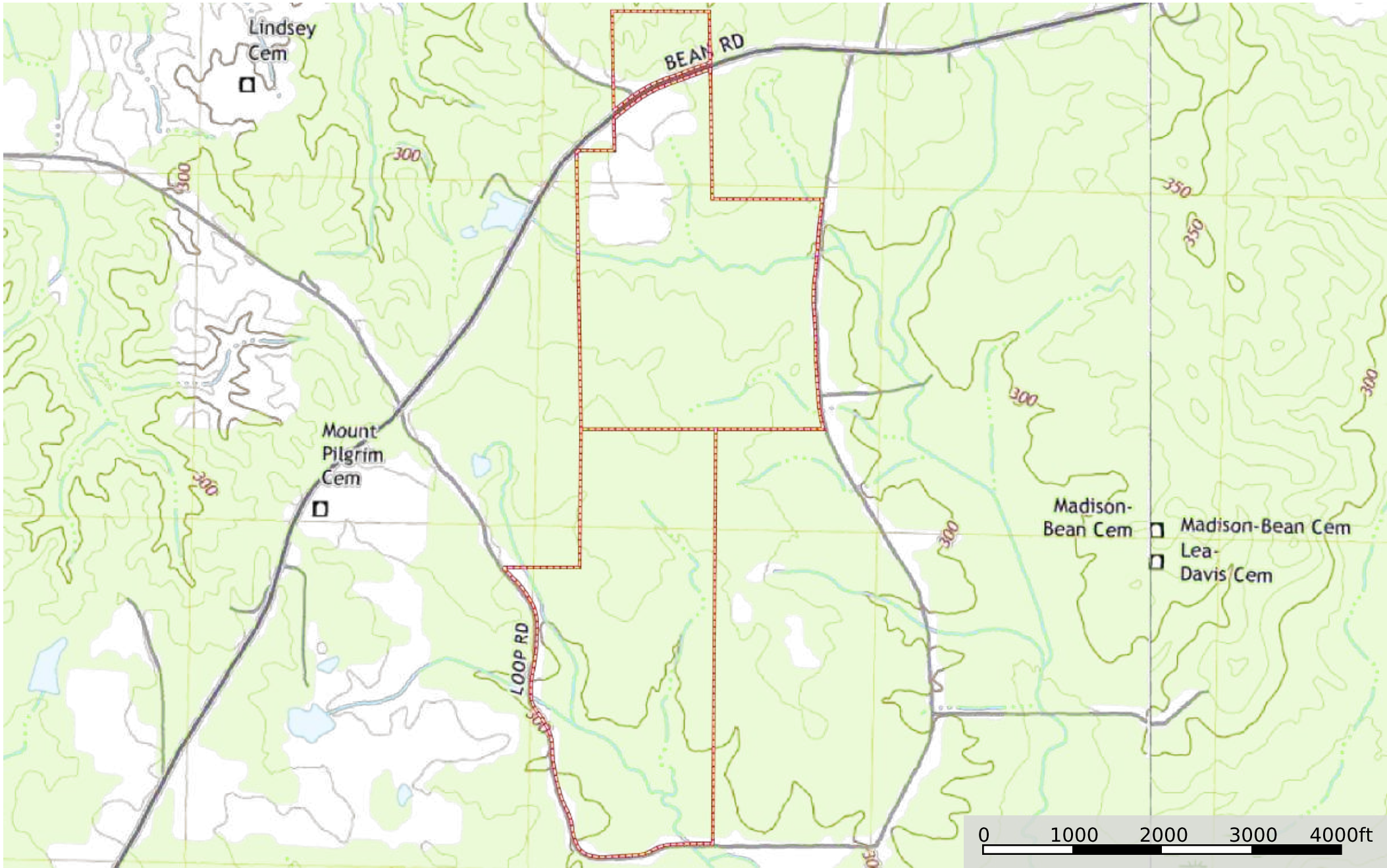
 Boundary


BB Hurst Bean/Loop Rd
Amite County, Mississippi, 304 AC +/-



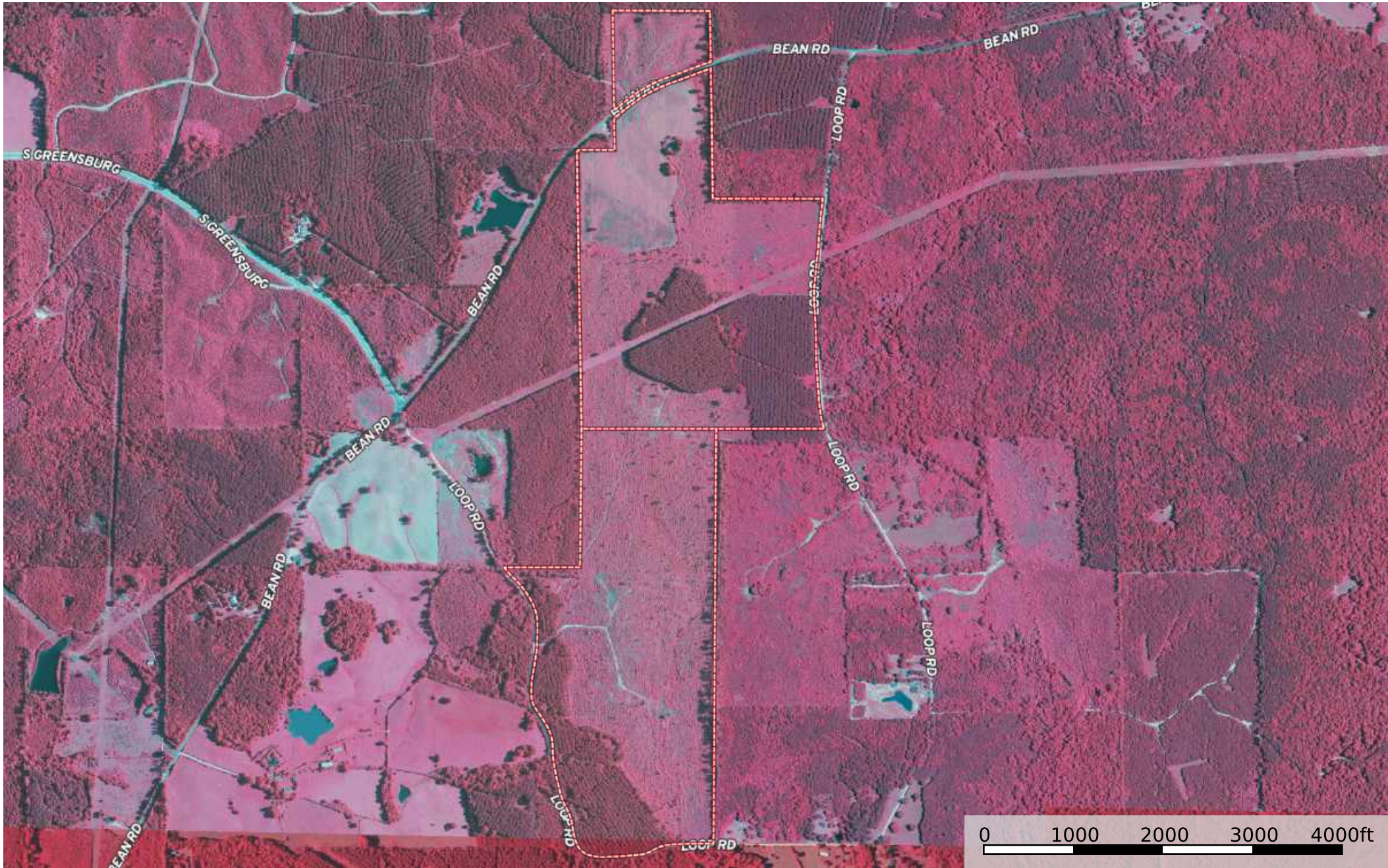
 Boundary  Stream, Intermitt  River/Creek  Water Body


BB Hurst Bean/Loop Rd
Amite County, Mississippi, 304 AC +/-

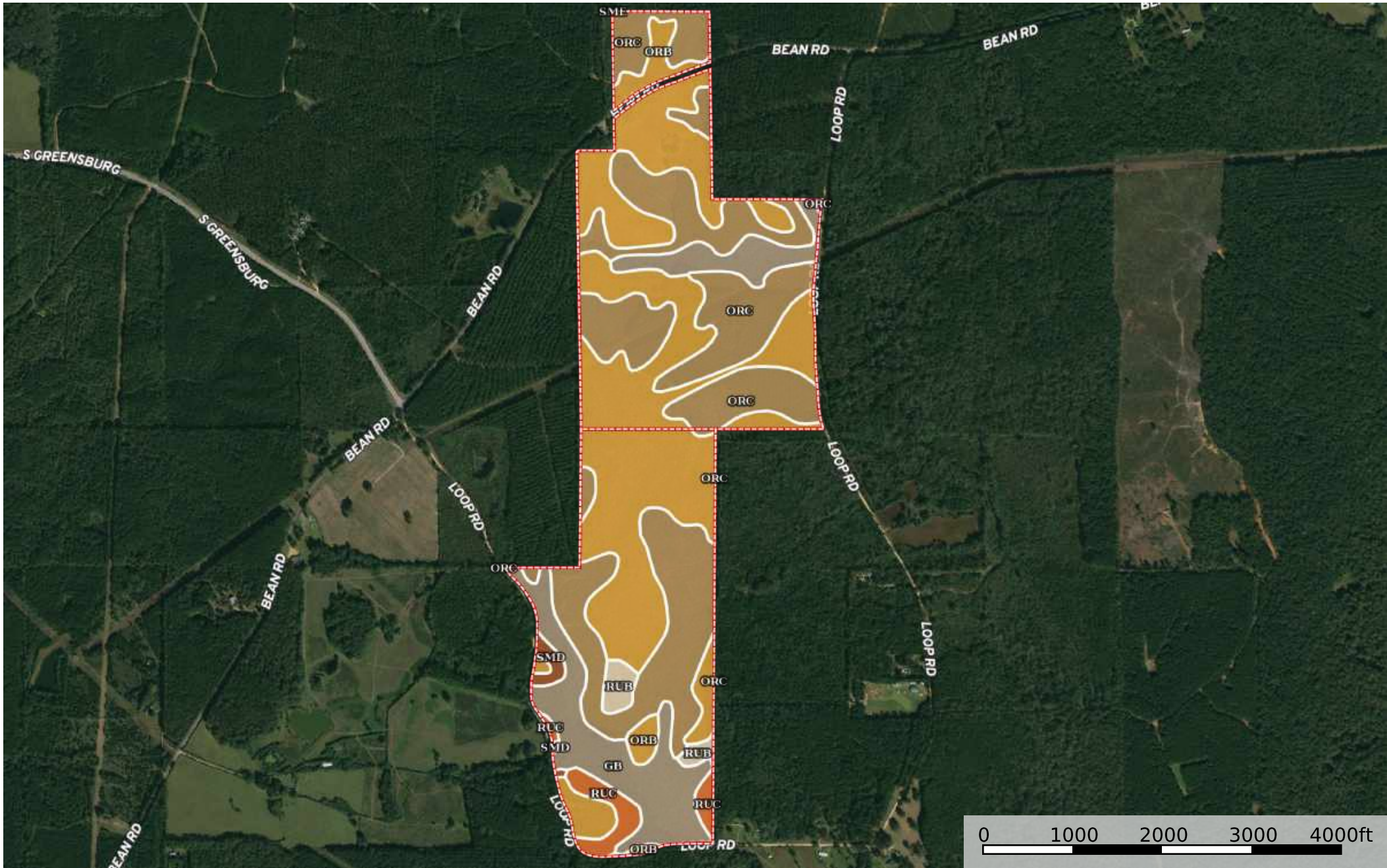



 Boundary

BB Hurst Bean/Loop Rd
Amite County, Mississippi, 304 AC +/-



 Boundary



 Boundary

|  All Polygons 295.3 ac

SOIL CODE	SOIL DESCRIPTION	ACRES	%	CAP
OrC	Ora loam, 5 to 8 percent slopes	115.4	39.07	3e
RuC	Ruston sandy loam, 5 to 8 percent slopes	7.8	2.66	3e
RuB	Ruston sandy loam, 2 to 5 percent slopes	4.5	1.51	3e
OrB	Ora loam, 2 to 5 percent slopes	122.8	41.6	2e
SmD	Smithdale sandy loam, 8 to 12 percent slopes	2.3	0.77	4e
Gb	Gillsburg silt loam, 0 to 2 percent slopes, occasionally flooded	42.5	14.39	2w
SmE	Smithdale sandy loam, 12 to 35 percent slopes	0.0	0.0	7e
TOTALS		295.3	100%	2.45

|  Boundary 280.8 ac

SOIL CODE	SOIL DESCRIPTION	ACRES	%	CAP
OrC	Ora loam, 5 to 8 percent slopes	105.9	37.73	3e
RuC	Ruston sandy loam, 5 to 8 percent slopes	7.8	2.79	3e
RuB	Ruston sandy loam, 2 to 5 percent slopes	4.5	1.59	3e
OrB	Ora loam, 2 to 5 percent slopes	117.8	41.94	2e
SmD	Smithdale sandy loam, 8 to 12 percent slopes	2.3	0.81	4e
Gb	Gillsburg silt loam, 0 to 2 percent slopes, occasionally flooded	42.5	15.14	2w
TOTALS		280.8	100%	2.44

|  Boundary 14.5 ac






SOIL CODE	SOIL DESCRIPTION	ACRES	%	CAP
OrC	Ora loam, 5 to 8 percent slopes	9.4	65.05	3e
SmE	Smithdale sandy loam, 12 to 35 percent slopes	0.0	0.01	7e
OrB	Ora loam, 2 to 5 percent slopes	5.1	34.94	2e
TOTALS		14.5	100%	2.65

Capability Legend

Increased Limitations and Hazards

Decreased Adaptability and Freedom of Choice Users

Land, Capability

								
	1	2	3	4	5	6	7	8
'Wild Life'	•	•	•	•	•	•	•	•
Forestry	•	•	•	•	•	•	•	
Limited	•	•	•	•	•	•	•	
Moderate	•	•	•	•	•	•		
Intense	•	•	•	•	•			
Limited	•	•	•	•				
Moderate	•	•	•					
Intense	•	•						
Very Intense	•							

Grazing Cultivation

(c) climatic limitations (e) susceptibility to erosion

(s) soil limitations within the rooting zone (w) excess of water