

Exhibit A

T.52 N., R.104 W. (RESURVEY)

S:\JOBS\1999\99-054\99-054 2nd AMEND.dwg
JOB 99-054A.PRD, JOB 95-60A.PRD
BOOK 312,345,384, 387 & 447

#2005-8026
8 OF 10

10/28/2005
03:47:00PH

REC \$32.00

PARK COUNTY, CODY, WY
KAREN CARTER, COUNTY CLERK

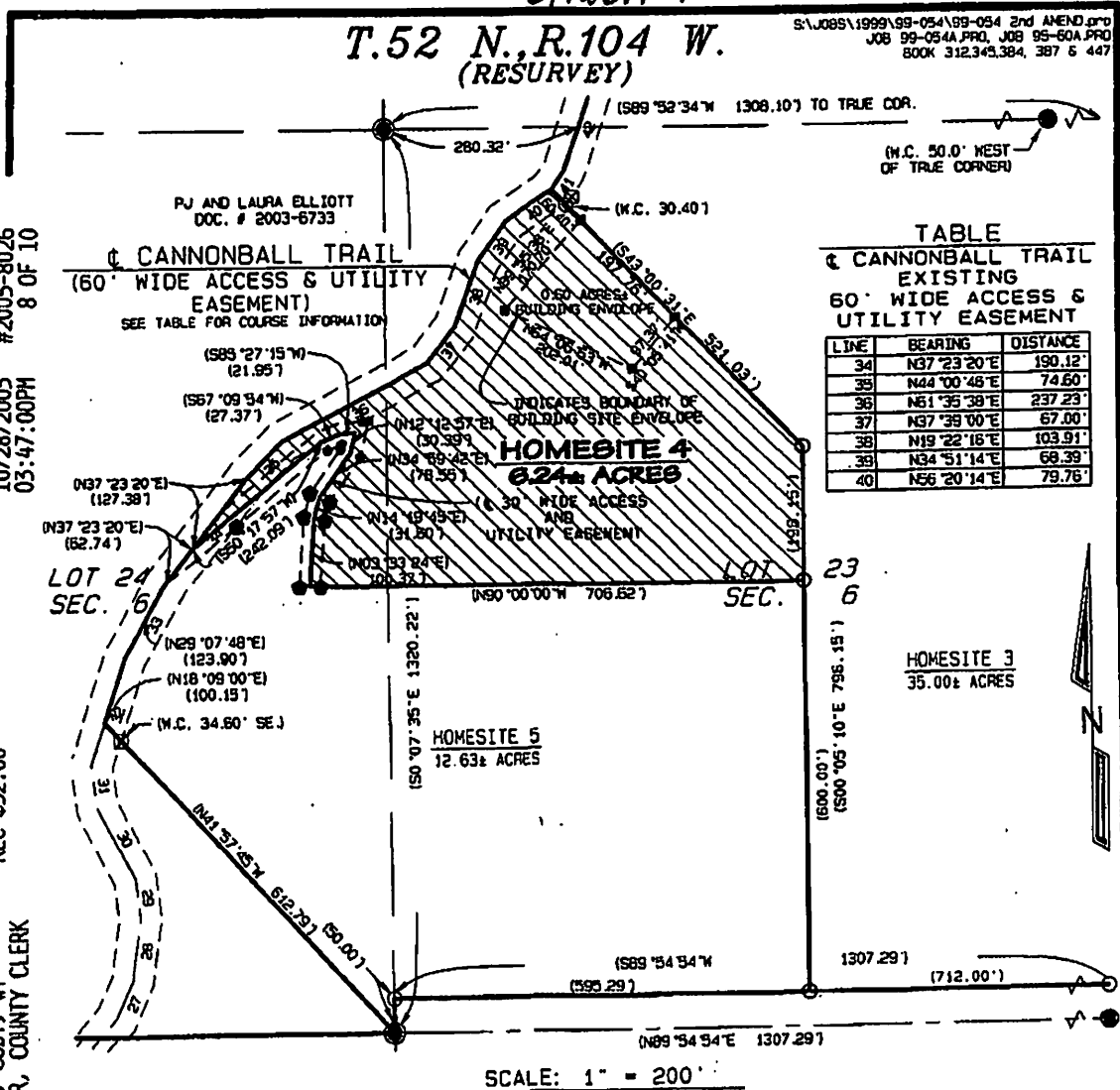


TABLE
CANNONBALL TRAIL
EXISTING
60' WIDE ACCESS &
UTILITY EASEMENT

LINE	BEARING	DISTANCE
34	N37°23'20"E	190.12'
35	N44°00'48"E	74.60'
36	N81°35'38"E	237.23'
37	N37°39'00"E	67.00'
38	N19°22'16"E	103.91'
39	N34°51'14"E	66.39'
40	N56°20'14"E	79.76'

NOTE REFER TO THE "RECORD OF SURVEY" PLATS RECORDED IN PLAT CABINET "6", PAGE 177 (DOCUMENT NO. 2004-4841), OF THE RECORDS ON FILE IN THE OFFICE OF THE PARK COUNTY CLERK AND RECORDER.

NOTE: THIS DRAWING IS NOT INTENDED TO SHOW ALL RIGHTS OF WAY, EASEMENTS, PUBLIC OR PRIVATE UTILITIES, IRRIGATION FACILITIES, OTHER IMPROVEMENTS OR FLOOD PLAIN AREAS UPON THE PARCEL OR PARCELS DELINEATED HEREON. THIS SURVEYOR DID NOT CONDUCT A COMPLETE TITLE SEARCH, ABSTRACT STUDY OR HAZARD INQUIRY FOR THE LANDS SHOWN HEREON.

LEGEND

- INDICATES REBAR WITH ALUMINUM CAP FOUND ON PREVIOUS SURVEY
- INDICATES 5/8" X 24" REBAR WITH 2" ALUM. CAP SET DURING PREVIOUS SURVEY
- INDICATES 5/8" X 24" REBAR WITH 2" ALUM. CAP SET ON EASEMENT SURVEY LINES &/OR AT THE INTERSECTION OF EASEMENT LINES & BOUNDARY LINES DURING PREVIOUS SURVEYS OR
- INDICATES BRASS CAP FOUND ON PREVIOUS SURVEY
- INDICATES 5/8" X 24" REBAR WITH 2" ALUM. CAP SET
- RECORD DIMENSIONS SHOWN THUS ()

CERTIFICATE OF SURVEYOR

STATE OF WYOMING)
COUNTY OF PARK)
I, PAUL A. BLOUGH ON BEHALF OF HOLM, BLOUGH AND COMPANY OF CODY, WYOMING DO HEREBY CERTIFY THAT THIS MAP WAS PREPARED FROM FIELD NOTES TAKEN DURING AN ACTUAL SURVEY MADE UNDER MY DIRECTION ON APRIL 12, 17, 23 & 24, MAY 11, 18, 23 & 24, JUNE 1 & 26 & JULY 5, 1995, JULY 30 & 31, AUG. 3, SEPT. 21, OCT. 4 THROUGH 7, NOV. 30, DEC. 1 THROUGH 3, 8 & 29, 1999, JAN. 7, 2000 & OCT. 7, 2005, THAT THIS MAP CORRECTLY SHOWS THE RESULTS OF SAID SURVEY AND THAT THE MONUMENTS FOUND OR SET ARE AS SHOWN TO THE BEST OF MY KNOWLEDGE AND BELIEF.

WYOMING U.S. REGISTRATION NO. 2332

Paul A. Blough
HOLM, BLOUGH AND COMPANY
BY: PAUL A. BLOUGH (AGENT)

OLD JOHANSSON RANCHES L.L.C.
35 BRETECHE CREEK RD
CODY, WYOMING 82414
RECORD OF SURVEY SHOWING
HOMESITE 4
WITHIN LOTS 23 & 24, SECTION 6
T. 52 N., R. 104 W., 6th P.M.,
(RESURVEY) PARK COUNTY, WYOMING

HB HOLM, BLOUGH AND COMPANY
Consulting Engineers & Land Surveyors
1402 Stampede Ave.
Cody, Wyoming 82414

Professional Land Surveyor
Paul A. Blough
2332
Paul A. Blough
Date: 10/28/05
Wyoming

REC BY KEA POA