



1.5+/- Acre Lot in the West Lincoln School District Lincoln County, MS



\$13,500

1323 Cowboy Trail Bogue Chitto, MS 39629

If you have been searching for mobile home friendly land in the West Lincoln School District in Lincoln County, MS, this is your chance. A home site has been cleared and leveled for the buyer's convenience. The water meter is on site, and power is nearby. This turn key parcel consists of 1.5+/- acres with some light covenants to protect your investment. Additional acreage is available for purchase. Call Blake today to schedule a viewing!

Directions from Interstate 55 Exit 30 at Bogue Chitto Road: Travel west on Bogue Chitto Road for 4.5 miles. Take a sharp right onto Arlington Drive and travel 0.3 miles. Turn left onto Traci Loop and travel 0.3 miles. Turn left onto Cowboy Trail and travel 0.3 miles. The land will be on your left.



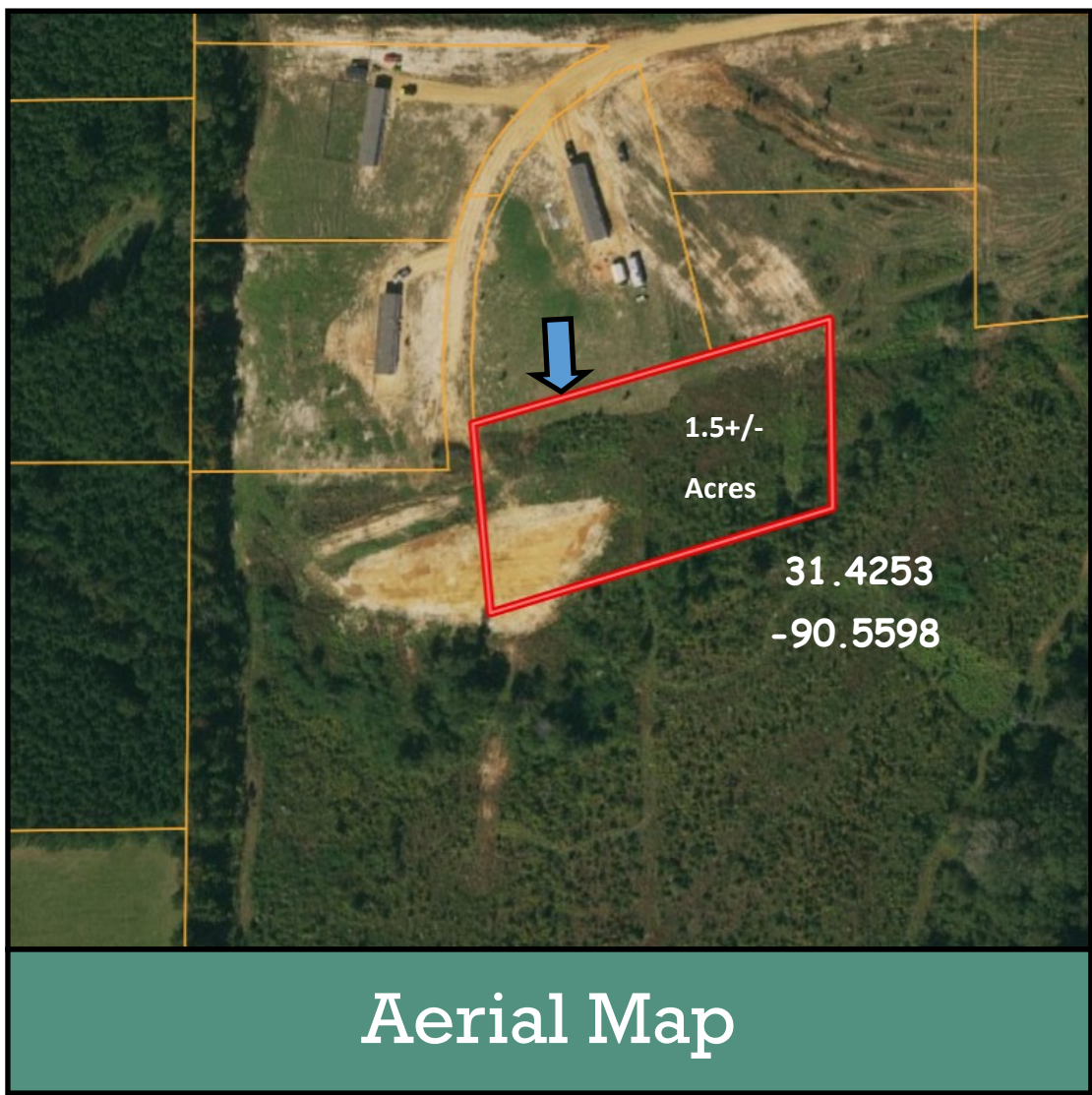
Call me today!

BLAKE SASSER, REALTOR®
Blake@TomSmithLand.com
601.990.5070 office | 601-757-5027 cell



TomSmithLandandHomes.com

Information is believed to be accurate but not guaranteed.

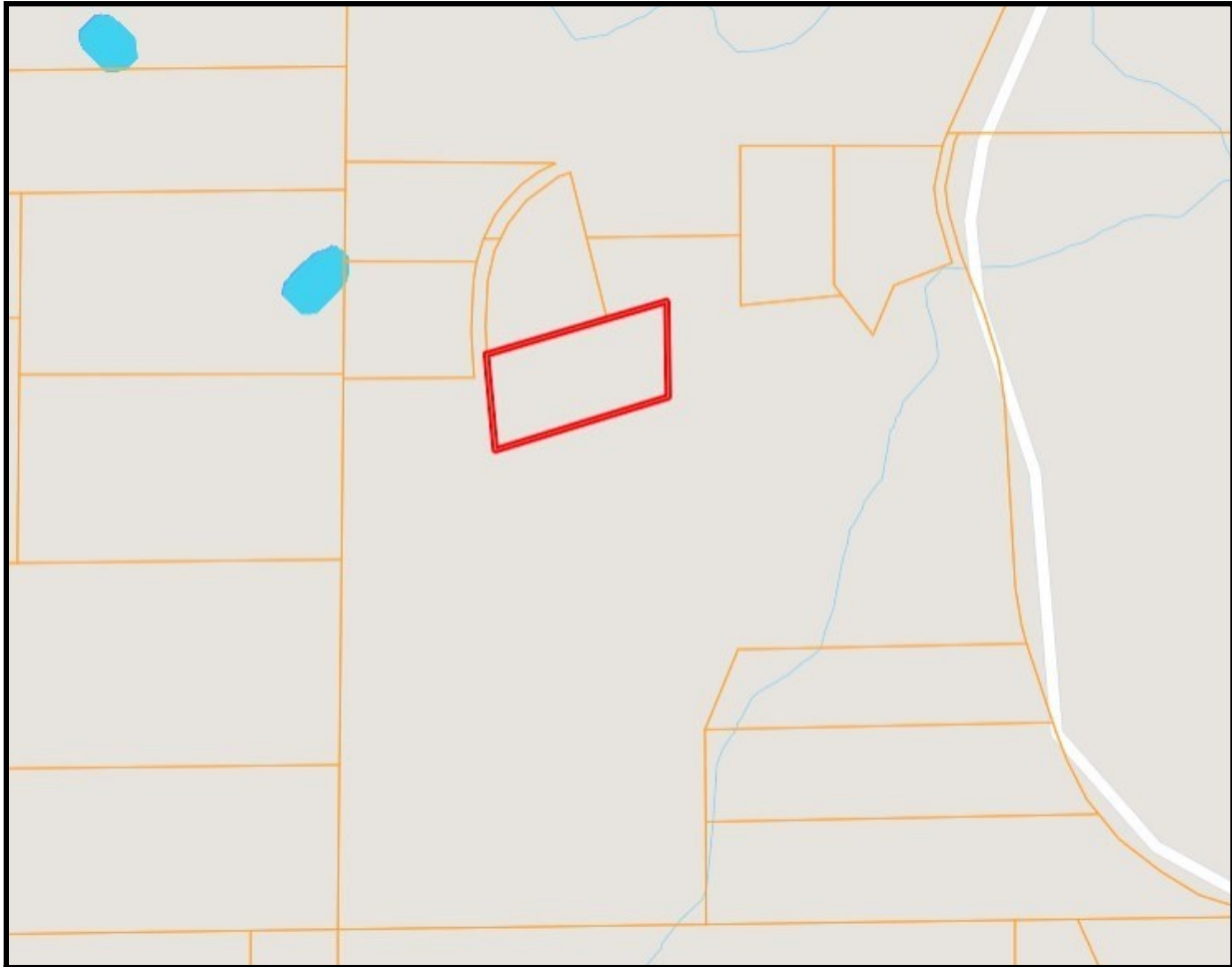


BLAKE SASSER, REALTOR®
Blake@TomSmithLand.com
601.990.5070 office | 601-757-5027 cell



TomSmithLandandHomes.com

Information is believed to be accurate but not guaranteed.



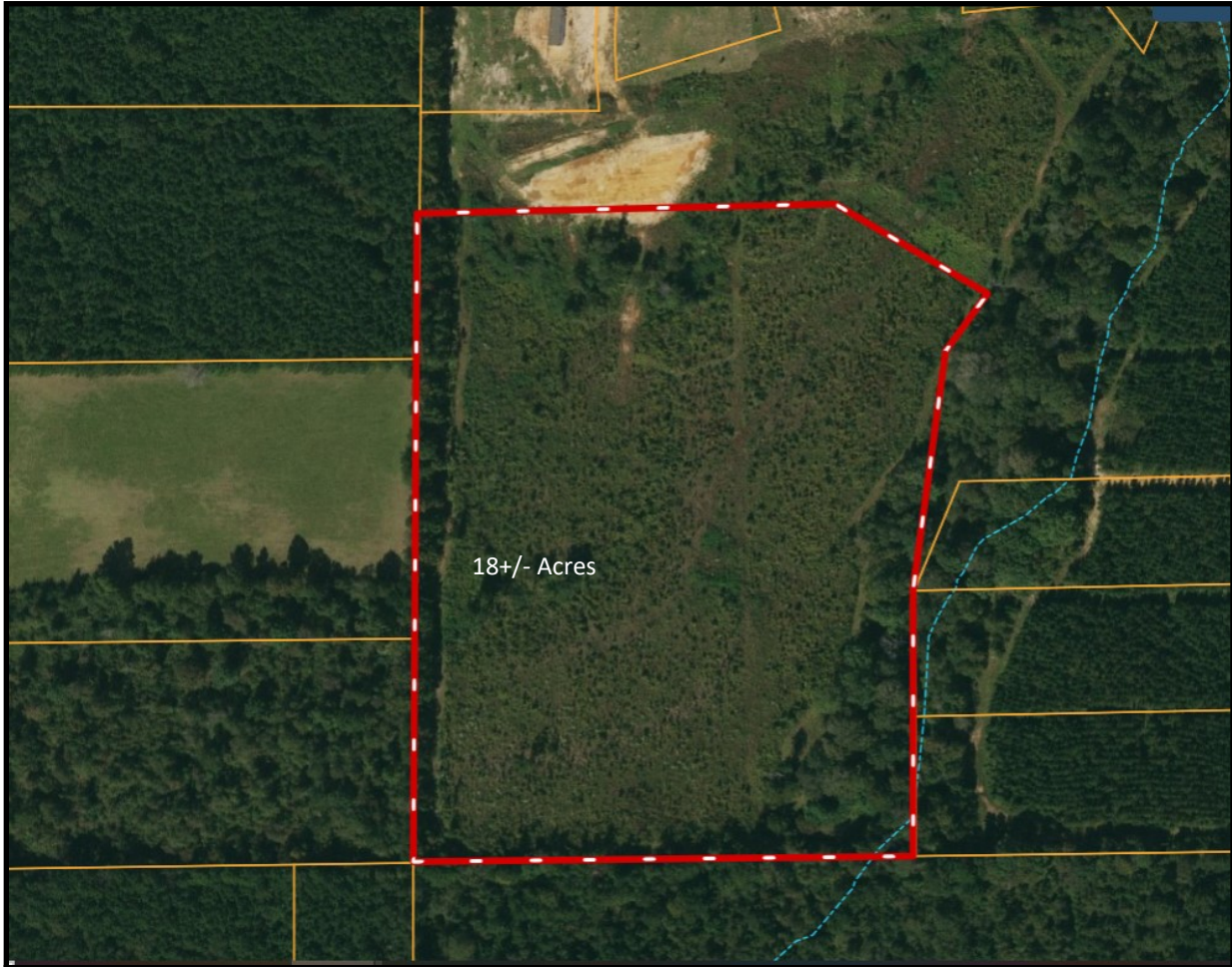
Ownership Map



BLAKE SASSER, REALTOR®
Blake@TomSmithLand.com
601.990.5070 office | 601-757-5027 cell

TomSmithLandandHomes.com

Information is believed to be accurate but not guaranteed.



Additional Land Available

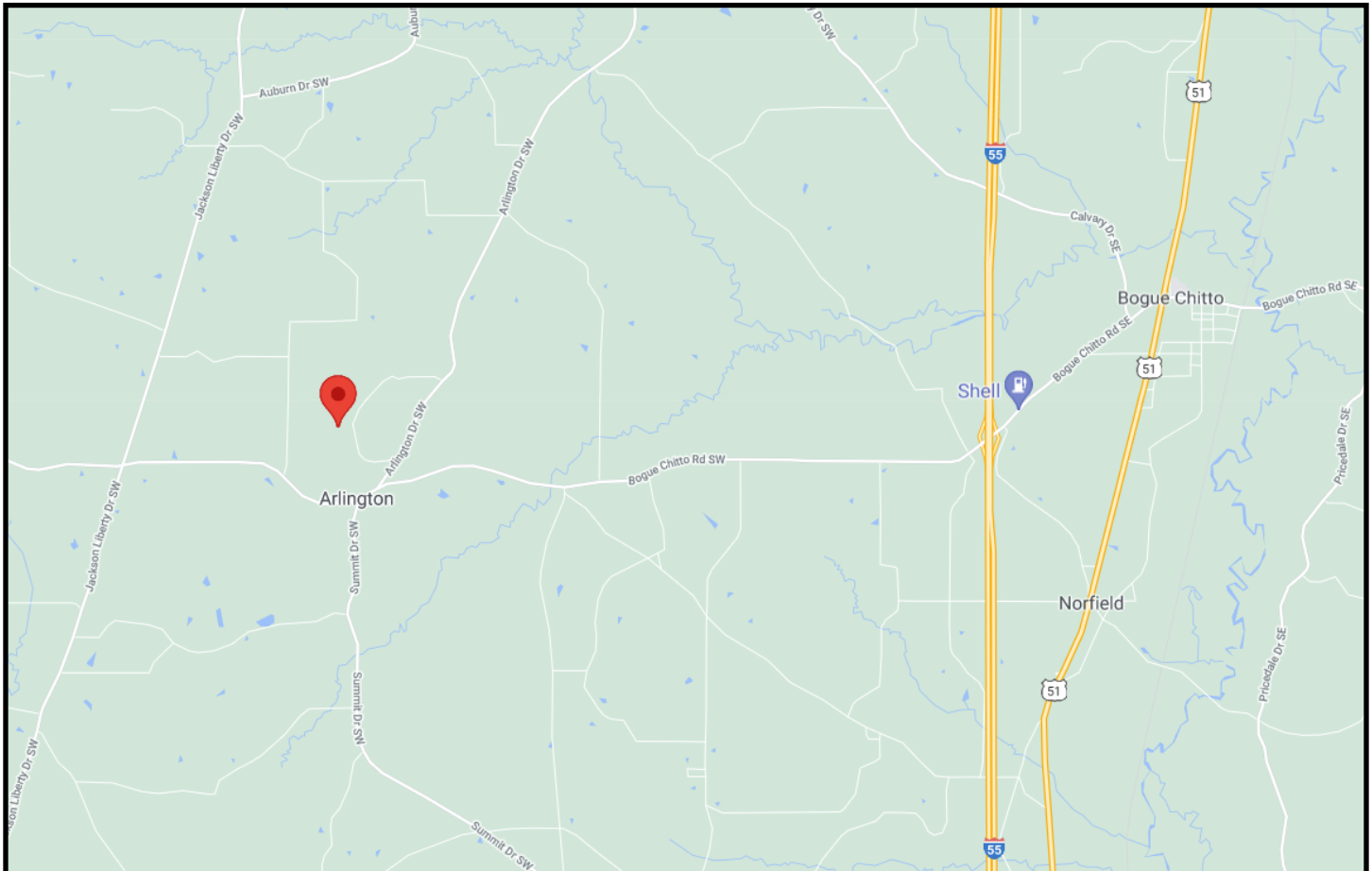
For informational purposes only. Survey will be required to purchase additional acreage.



BLAKE SASSER, REALTOR®
Blake@TomSmithLand.com
601.990.5070 office | 601-757-5027 cell

TomSmithLandandHomes.com

Information is believed to be accurate but not guaranteed.



Directional Map

1323 Cowboy Trail Bogue Chitto, MS 39629

Directions From Interstate 55 Exit 30 at Bogue Chitto Road: Travel west on Bogue Chitto Road for 4.5 miles. Take a sharp right onto Arlington Drive and travel 0.3 miles. Turn left onto Traci Loop and travel 0.3 miles. Turn left onto Cowboy Trail and travel 0.3 miles. The land will be on your left.



BLAKE SASSER, REALTOR®
Blake@TomSmithLand.com
601.990.5070 office | 601-757-5027 cell



TomSmithLandandHomes.com

Information is believed to be accurate but not guaranteed.