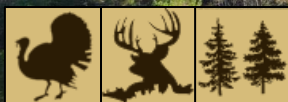


187+/- Acres in Holmes County, MS

Recreational Hunting Tract and Potential Timber Investment



\$1,900/Acre

Have you been looking for your next hunting or investment property? Look no further than this 187+/- Acre tract in Holmes County, MS. Located 45 minutes from Madison, MS, this tract is the weekend get away you need! The property consists of mixed-aged and mixed timber type. The rolling topography, pine hills, hardwood bottoms, and multiple food plot sites offer ample bedding and vegetation for various wildlife species. With 3,400+/- feet of dirt road frontage and internal ATV roads, this property is accessible with ease. Located on the back-side of the property Shipp Creek backed by a levee, holding water periodically throughout the year. This property is a must see! Water is located on Doc Davis Road. The cabin on property does not convey with new ownership. For more information or to schedule a showing, contact John Delpapa!

Directions From from intersection of I-55 and Gluckstadt Road in Madison, MS: Travel northeast on I-55 N for 43.7 miles. Take exit 156 to merge onto MS-12 and travel 4.6 miles. Make a right turn onto Doc Davis road and travel 1.2 miles. The property will be on your right. [GOOGLE MAP HERE](#)



*Call me
today!*

JOHN DELPAPA, REALTOR®

John@TomSmithLand.com

662.268.6333 **office** | 662.788.2455 **cell**

Licensed in MS & AL | MS Registered Forester | Associate Wildlife Biologist



Expect More. Get More.

TomSmithLandandHomes.com

Information is believed to be accurate but not guaranteed.



*Call me
today!*

JOHN DELPAPA, REALTOR®

John@TomSmithLand.com

662.268.6333 **office** | 662.788.2455 **cell**

Licensed in MS & AL | MS Registered Forester | Associate Wildlife Biologist



Expect More. Get More.

TomSmithLandandHomes.com

Information is believed to be accurate but not guaranteed.

LandReport
2011-2022
AMERICA'S
BEST
BROKERAGES



*Call me
today!*

JOHN DELPAPA, REALTOR®

John@TomSmithLand.com

662.268.6333 **office** | 662.788.2455 **cell**

Licensed in MS & AL | MS Registered Forester | Associate Wildlife Biologist



TomSmithLandandHomes.com

Information is believed to be accurate but not guaranteed.

LandReport
2011-2022
AMERICA'S
BEST
BROKERAGES



*Call me
today!*

JOHN DELPAPA, REALTOR®

John@TomSmithLand.com

662.268.6333 **office** | 662.788.2455 **cell**

Licensed in MS & AL | MS Registered Forester | Associate Wildlife Biologist

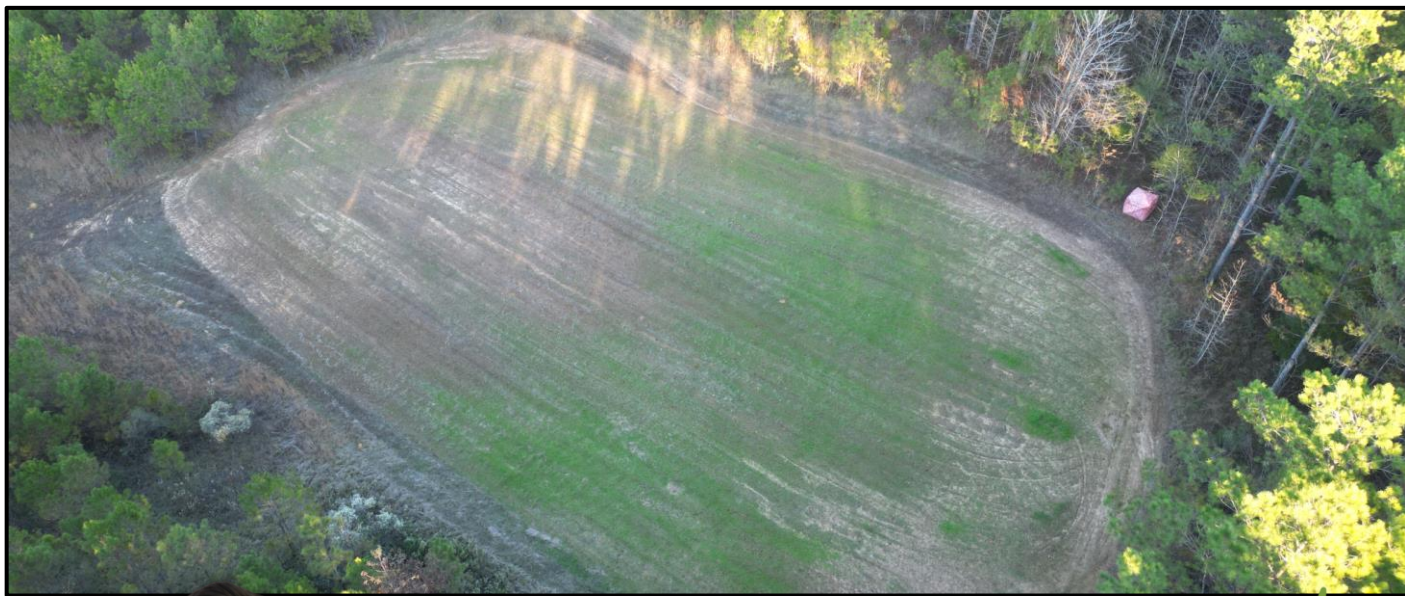
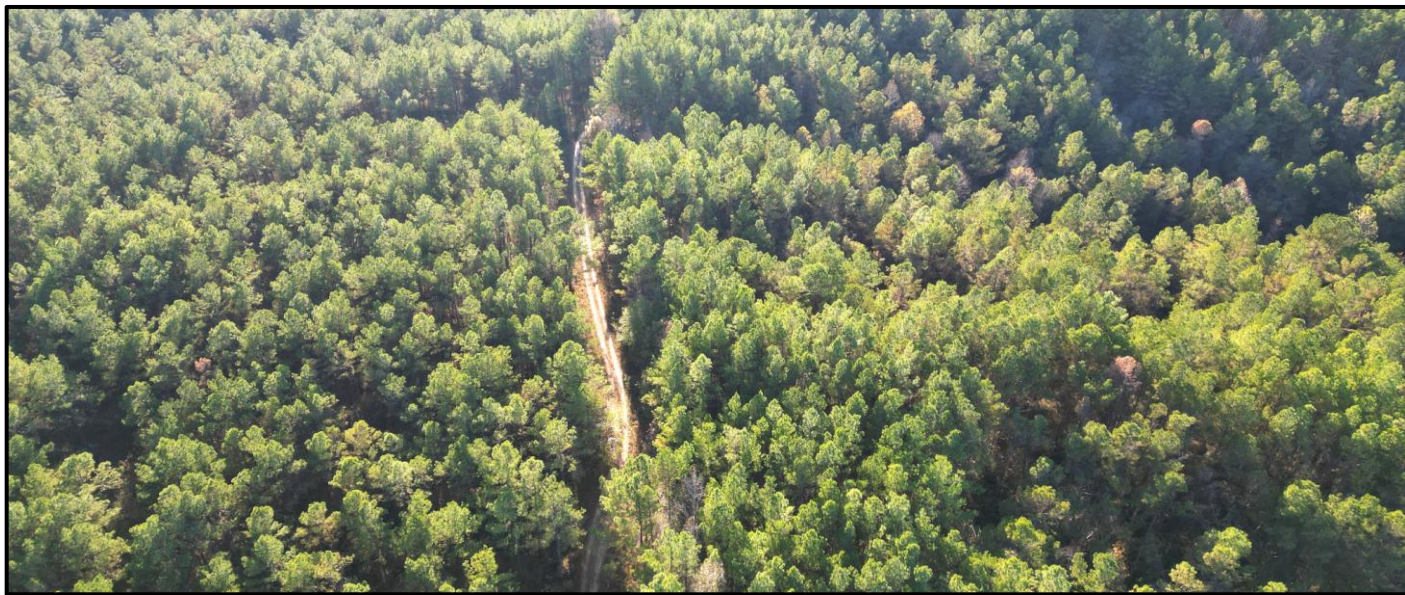


Expect More. Get More.

TomSmithLandandHomes.com

Information is believed to be accurate but not guaranteed.

LandReport
2011-2022
AMERICA'S
BEST
BROKERAGES



*Call me
today!*

JOHN DELPAPA, REALTOR®

John@TomSmithLand.com

662.268.6333 **office** | 662.788.2455 **cell**

Licensed in MS & AL | MS Registered Forester | Associate Wildlife Biologist

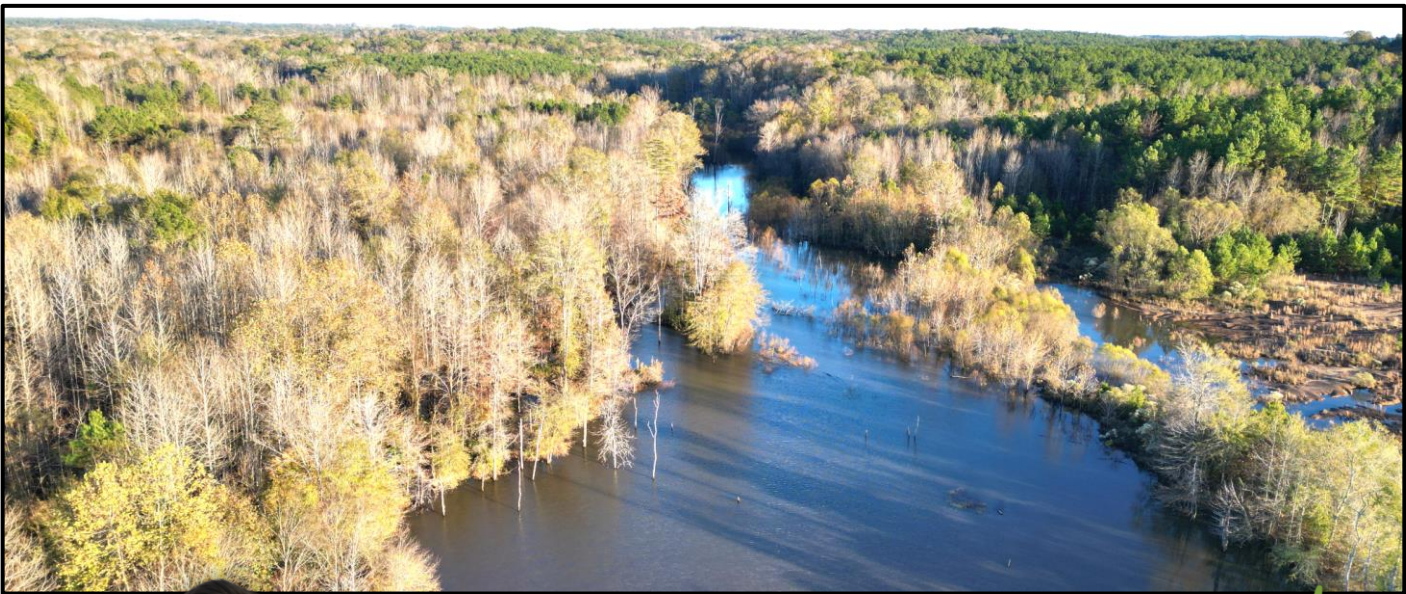


Expect More. Get More.

TomSmithLandandHomes.com

Information is believed to be accurate but not guaranteed.

LandReport
2011-2022
AMERICA'S
BEST
BROKERAGES



*Call me
today!*

JOHN DELPAPA, REALTOR®

John@TomSmithLand.com

662.268.6333 **office** | 662.788.2455 **cell**

Licensed in MS & AL | MS Registered Forester | Associate Wildlife Biologist



TomSmithLandandHomes.com

Information is believed to be accurate but not guaranteed.

LandReport
2011-2022
AMERICA'S
BEST
BROKERAGES



*Call me
today!*

JOHN DELPAPA, REALTOR®

John@TomSmithLand.com

662.268.6333 **office** | 662.788.2455 **cell**

Licensed in MS & AL | MS Registered Forester | Associate Wildlife Biologist



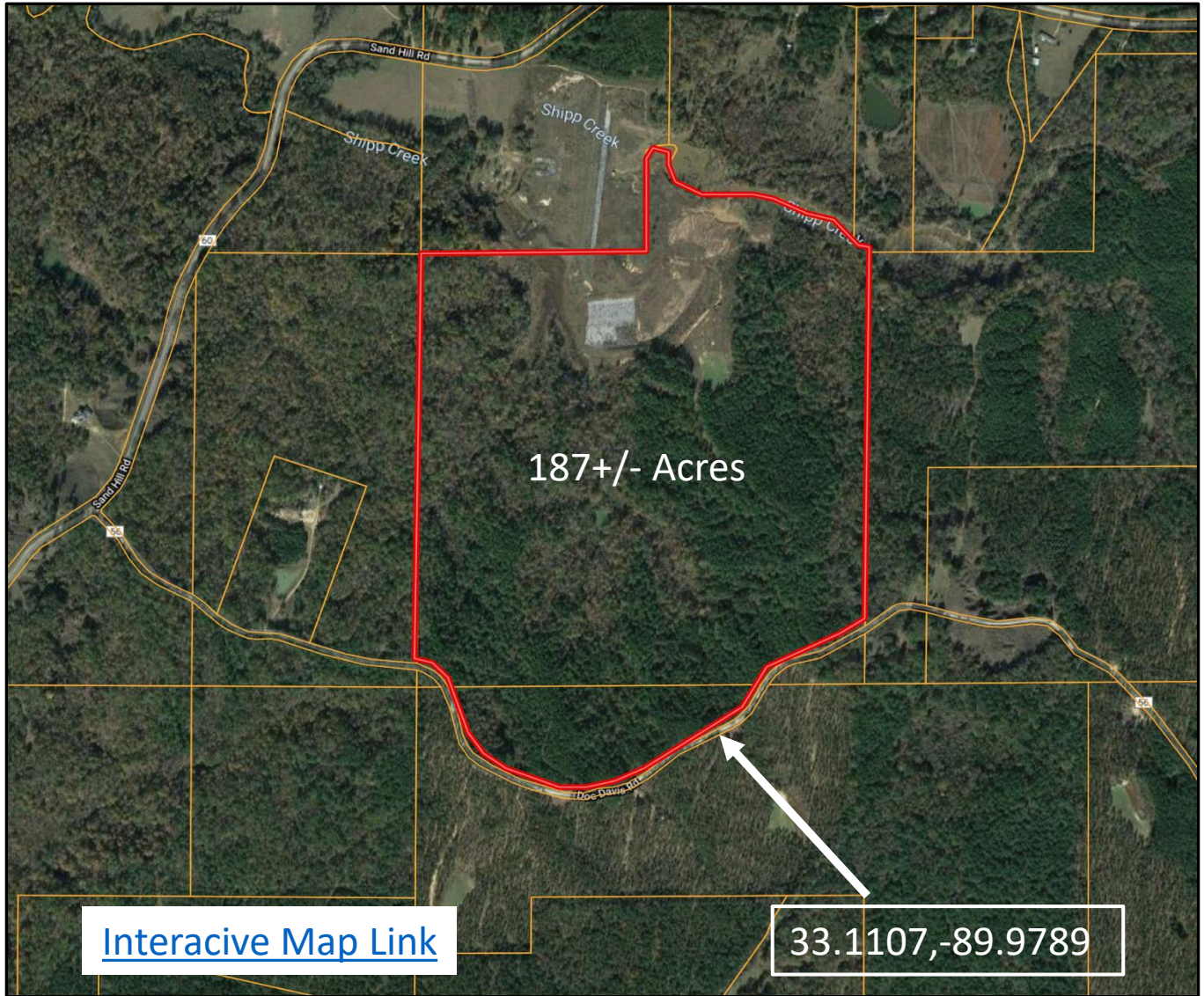
Expect More. Get More.

TomSmithLandandHomes.com

Information is believed to be accurate but not guaranteed.

LandReport
2011-2022
AMERICA'S
BEST
BROKERAGES

Aerial Map



*Call me
today!*

JOHN DELPAPA, REALTOR®

John@TomSmithLand.com

662.268.6333 **office** | 662.788.2455 **cell**

Licensed in MS & AL | MS Registered Forester | Associate Wildlife Biologist

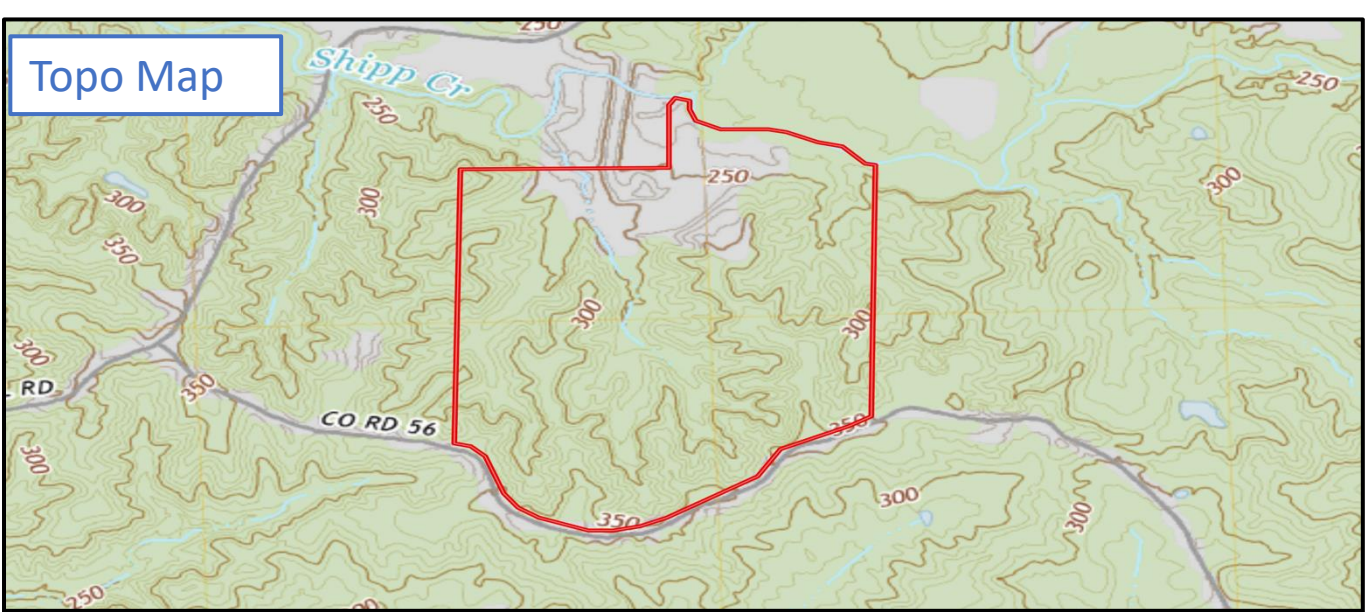


Expect More. Get More.

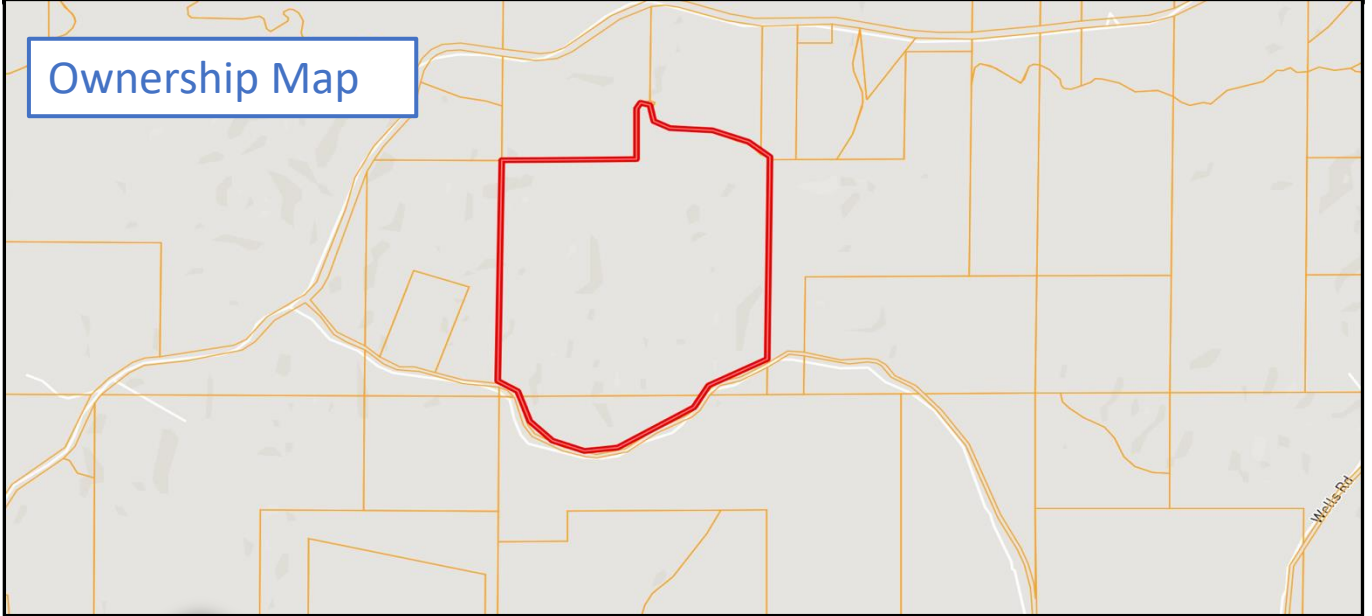
TomSmithLandandHomes.com

Information is believed to be accurate but not guaranteed.

Topo Map



Ownership Map



*Call me
today!*

JOHN DELPAPA, REALTOR®

John@TomSmithLand.com

662.268.6333 **office** | 662.788.2455 **cell**

Licensed in MS & AL | MS Registered Forester | Associate Wildlife Biologist



Expect More. Get More.

TomSmithLandandHomes.com

Information is believed to be accurate but not guaranteed.

FEMA Flood and Water Feature Map



*Call me
today!*

JOHN DELPAPA, REALTOR®

John@TomSmithLand.com

662.268.6333 **office** | 662.788.2455 **cell**

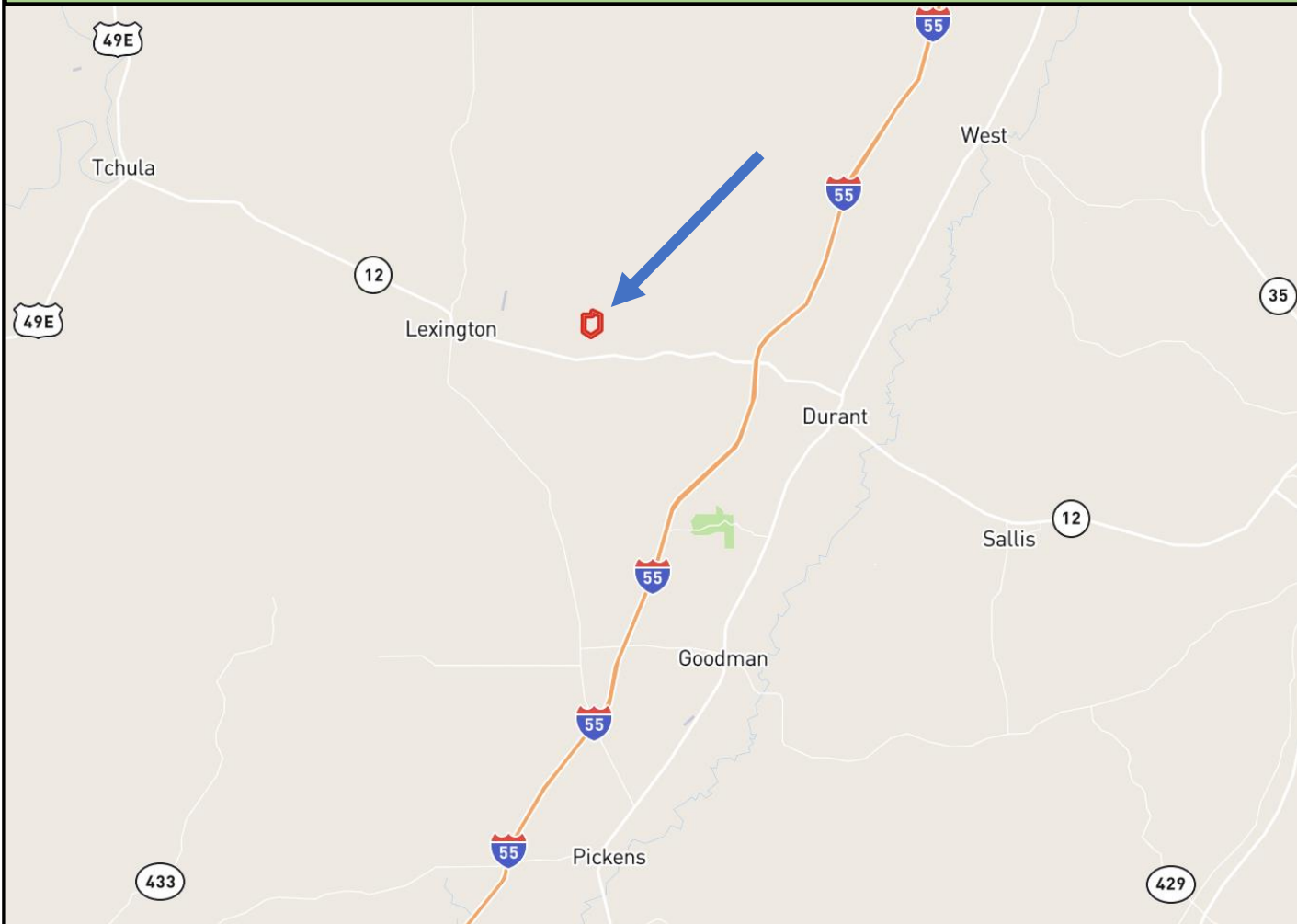
Licensed in MS & AL | MS Registered Forester | Associate Wildlife Biologist



TomSmithLandandHomes.com

Information is believed to be accurate but not guaranteed.

Directional Map



Directions From from intersection of I-55 and Gluckstadt Road in Madison, MS: Travel northeast on I-55 N for 43.7 miles. Take exit 156 to merge onto MS-12 and travel 4.6 miles. Make a right turn onto Doc Davis road and travel 1.2 miles. The property will be on your right. [GOOGLE MAP HERE](#)



*Call me
today!*

JOHN DELPAPA, REALTOR®

John@TomSmithLand.com

662.268.6333 **office** | 662.788.2455 **cell**

Licensed in MS & AL | MS Registered Forester | Associate Wildlife Biologist



TomSmithLandandHomes.com

Information is believed to be accurate but not guaranteed.