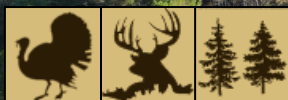


# 187+/- Acres in Holmes County, MS

## Recreational Hunting Tract and Potential Timber Investment



# \$1,900/Acre

Have you been looking for your next hunting or investment property? Look no further than this 187+/- Acre tract in Holmes County, MS. Located 45 minutes from Madison, MS, this tract is the weekend get away you need! The property consists of mixed-aged and mixed timber type. The rolling topography, pine hills, hardwood bottoms, and multiple food plot sites offer ample bedding and vegetation for various wildlife species. With 3,400+/- feet of dirt road frontage and internal ATV roads, this property is accessible with ease. Located on the back-side of the property Shipp Creek backed by a levee, holding water periodically throughout the year. This property is a must see! Water is located on Doc Davis Road. The cabin on property does not convey with new ownership. For more information or to schedule a showing, contact John Delpapa or Harper Day!

**Directions From from intersection of I-55 and Gluckstadt Road in Madison, MS:** Travel northeast on I-55 N for 43.7 miles. Take exit 156 to merge onto MS-12 and travel 4.6 miles. Make a right turn onto Doc Davis road and travel 1.2 miles. The property will be on your right. [GOOGLE MAP HERE](#)



**JOHN DELPAPA**, REALTOR®  
John@TomSmithLand.com  
662.268.6333 office | 662.788.2455 cell



Expect More. Get More.

*Call us today!*



**HARPER DAY**, REALTOR®  
Harper@TomSmithLand.com  
662.268.6333 office | 662.694.9751 cell

# TomSmithLandandHomes.com

Information is believed to be accurate but not guaranteed.







**JOHN DELPAPA**, REALTOR®  
John@TomSmithLand.com  
662.268.6333 office | 662.788.2455 cell



Expect More. Get More.

*Call us today!*



**HARPER DAY**, REALTOR®  
Harper@TomSmithLand.com  
662.268.6333 office | 662.694.9751 cell

**TomSmithLandandHomes.com**

Information is believed to be accurate but not guaranteed.







**JOHN DELPAPA**, REALTOR®  
John@TomSmithLand.com  
662.268.6333 **office** | 662.788.2455 **cell**



Expect More. Get More.

*Call us today!*



**HARPER DAY**, REALTOR®  
Harper@TomSmithLand.com  
662.268.6333 **office** | 662.694.9751 **cell**

**TomSmithLandandHomes.com**

Information is believed to be accurate but not guaranteed.







**JOHN DELPAPA**, REALTOR®  
John@TomSmithLand.com  
662.268.6333 **office** | 662.788.2455 **cell**



Expect More. Get More.

*Call us today!*



**HARPER DAY**, REALTOR®  
Harper@TomSmithLand.com  
662.268.6333 **office** | 662.694.9751 **cell**

**TomSmithLandandHomes.com**

Information is believed to be accurate but not guaranteed.







**JOHN DELPAPA**, REALTOR®  
John@TomSmithLand.com  
662.268.6333 **office** | 662.788.2455 **cell**



Expect More. Get More.

*Call us today!*



**HARPER DAY**, REALTOR®  
Harper@TomSmithLand.com  
662.268.6333 **office** | 662.694.9751 **cell**

**TomSmithLandandHomes.com**

Information is believed to be accurate but not guaranteed.







**JOHN DELPAPA**, REALTOR®  
John@TomSmithLand.com  
662.268.6333 **office** | 662.788.2455 **cell**



*Call us today!*



**HARPER DAY**, REALTOR®  
Harper@TomSmithLand.com  
662.268.6333 **office** | 662.694.9751 **cell**

**TomSmithLandandHomes.com**

Information is believed to be accurate but not guaranteed.







**JOHN DELPAPA**, REALTOR®  
 John@TomSmithLand.com  
 662.268.6333 **office** | 662.788.2455 **cell**



Expect More. Get More.

*Call us today!*



**HARPER DAY**, REALTOR®  
 Harper@TomSmithLand.com  
 662.268.6333 **office** | 662.694.9751 **cell**

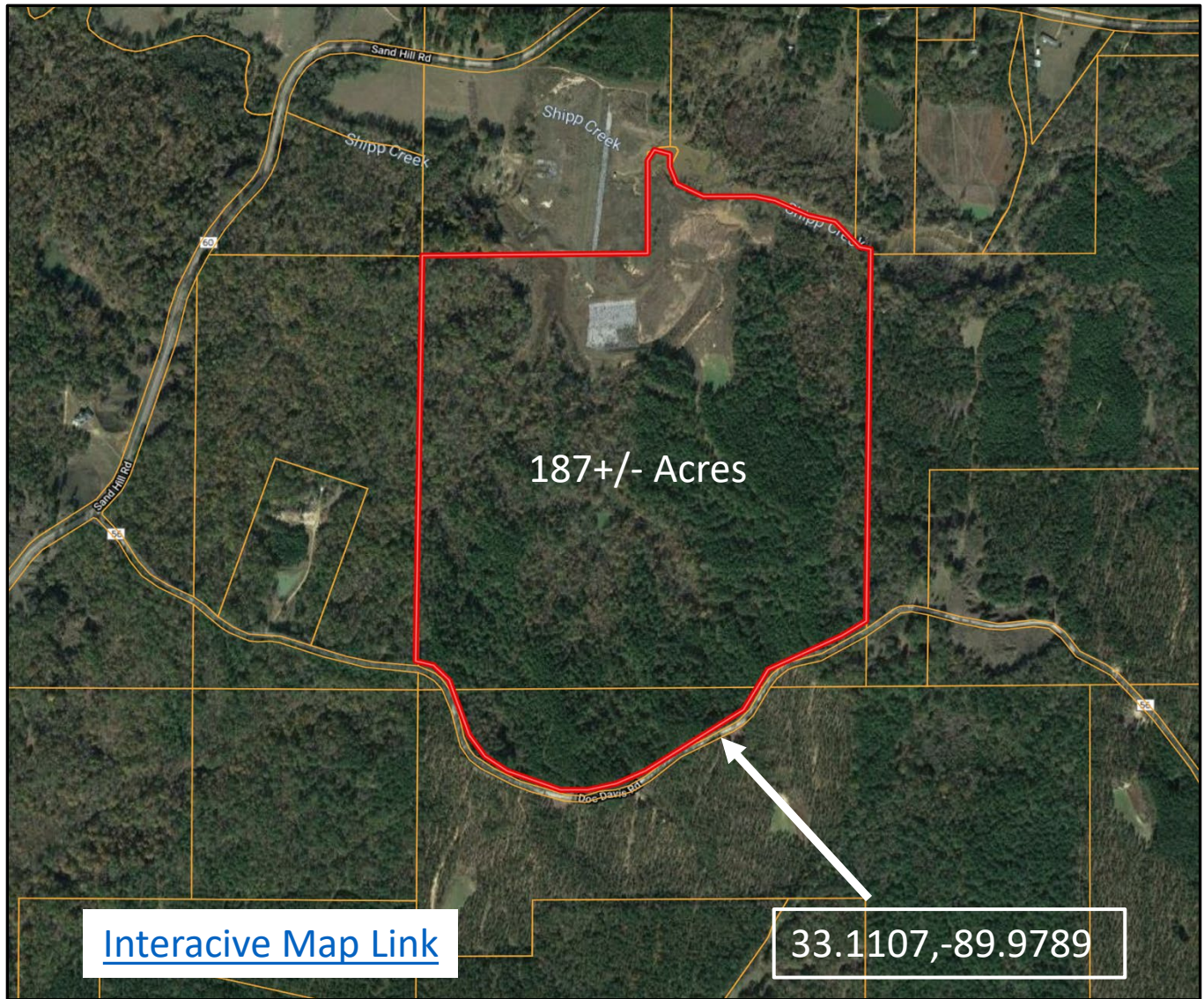
**TomSmithLandandHomes.com**

Information is believed to be accurate but not guaranteed.





# Aerial Map



**JOHN DELPAPA**, REALTOR®  
John@TomSmithLand.com  
662.268.6333 office | 662.788.2455 cell



Expect More. Get More.

*Call us today!*



**HARPER DAY**, REALTOR®  
Harper@TomSmithLand.com  
662.268.6333 office | 662.694.9751 cell

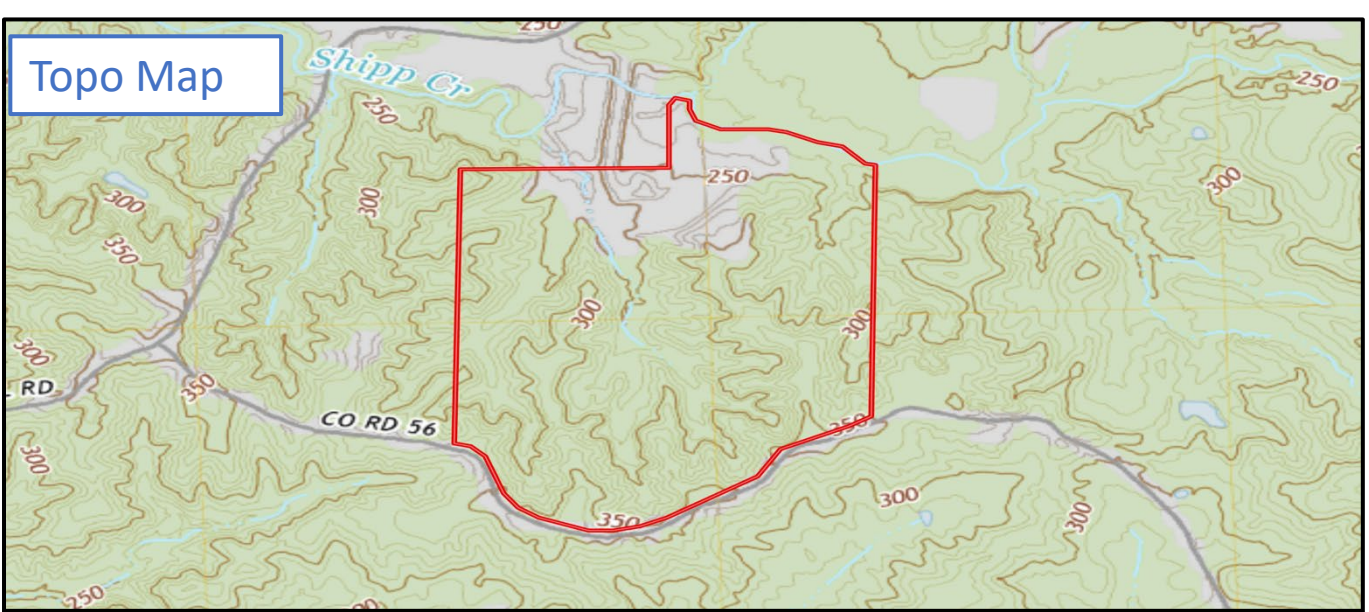
## TomSmithLandandHomes.com

Information is believed to be accurate but not guaranteed.

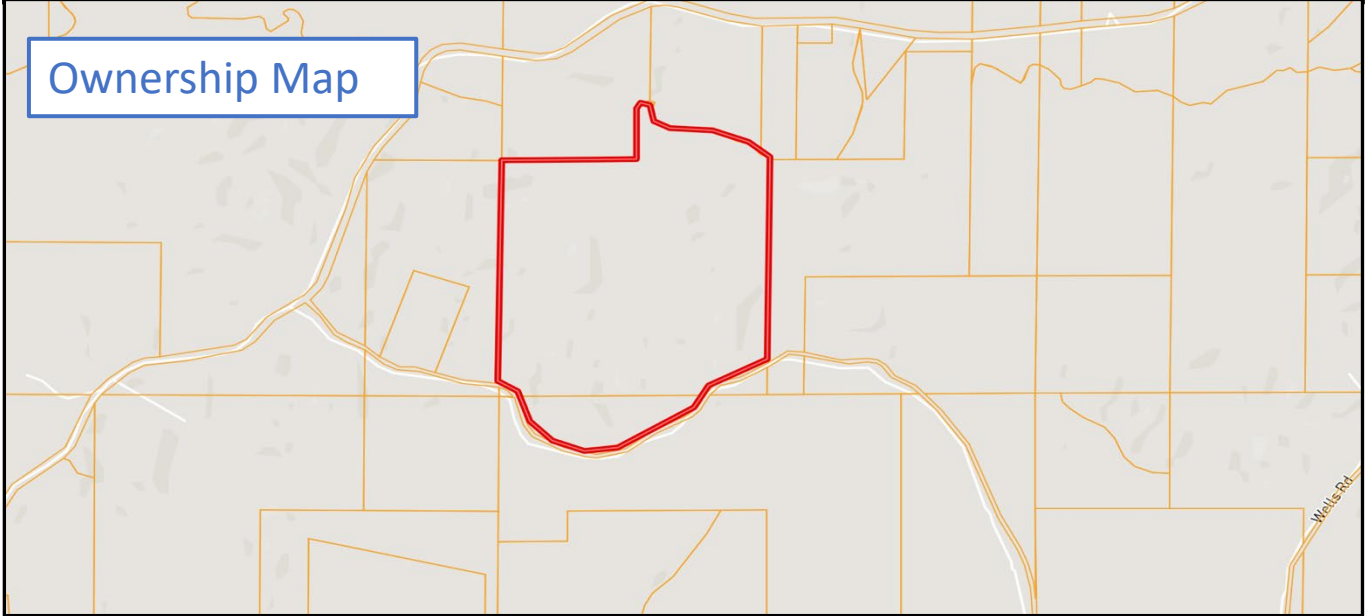




## Topo Map



## Ownership Map



**JOHN DELPAPA**, REALTOR®  
John@TomSmithLand.com  
662.268.6333 office | 662.788.2455 cell



Expect More. Get More.

*Call us today!*



**HARPER DAY**, REALTOR®  
Harper@TomSmithLand.com  
662.268.6333 office | 662.694.9751 cell

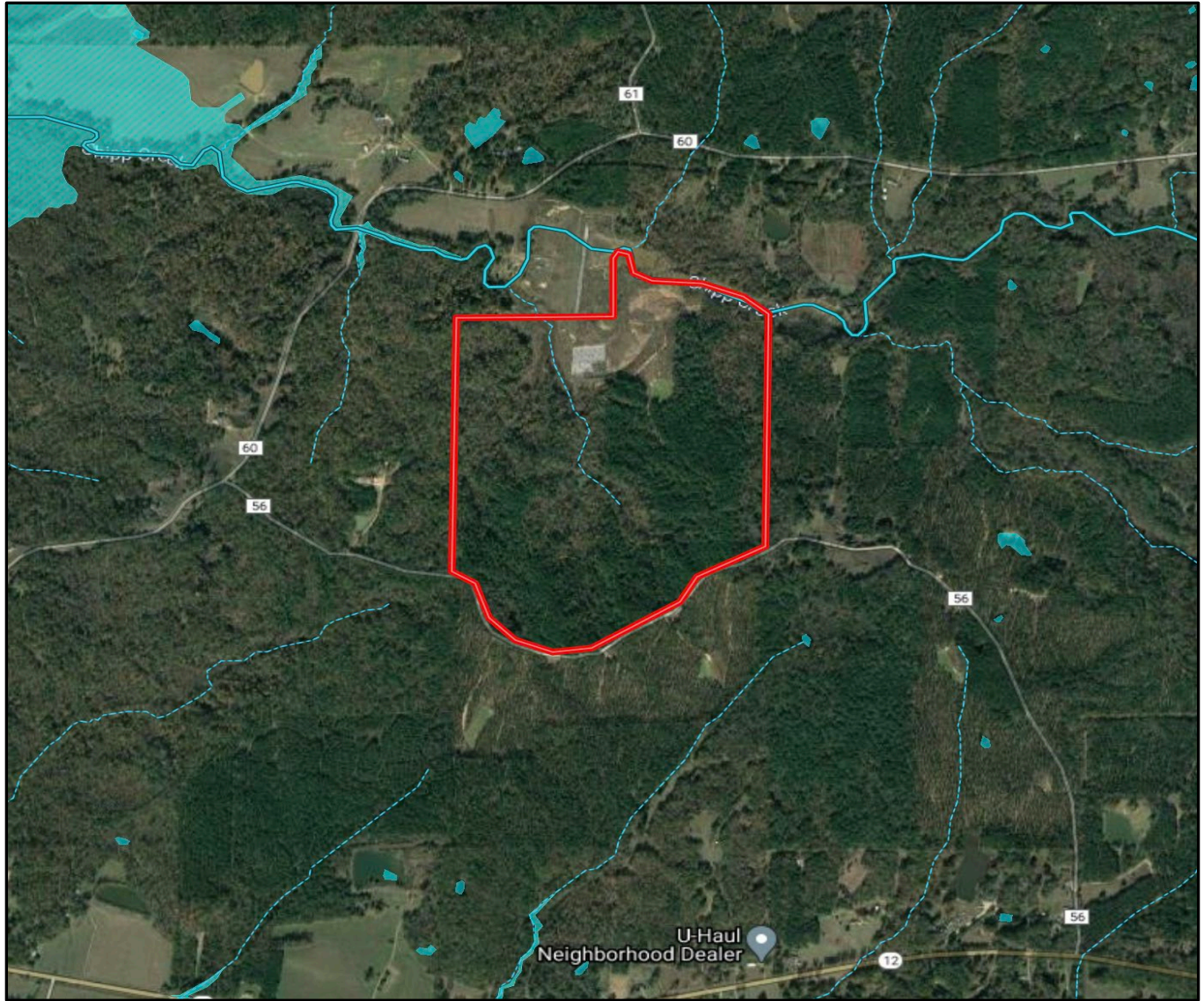
# TomSmithLandandHomes.com

Information is believed to be accurate but not guaranteed.





# FEMA Flood and Water Feature Map



**JOHN DELPAPA**, REALTOR®  
John@TomSmithLand.com  
662.268.6333 office | 662.788.2455 cell



Expect More. Get More.

*Call us today!*



**HARPER DAY**, REALTOR®  
Harper@TomSmithLand.com  
662.268.6333 office | 662.694.9751 cell

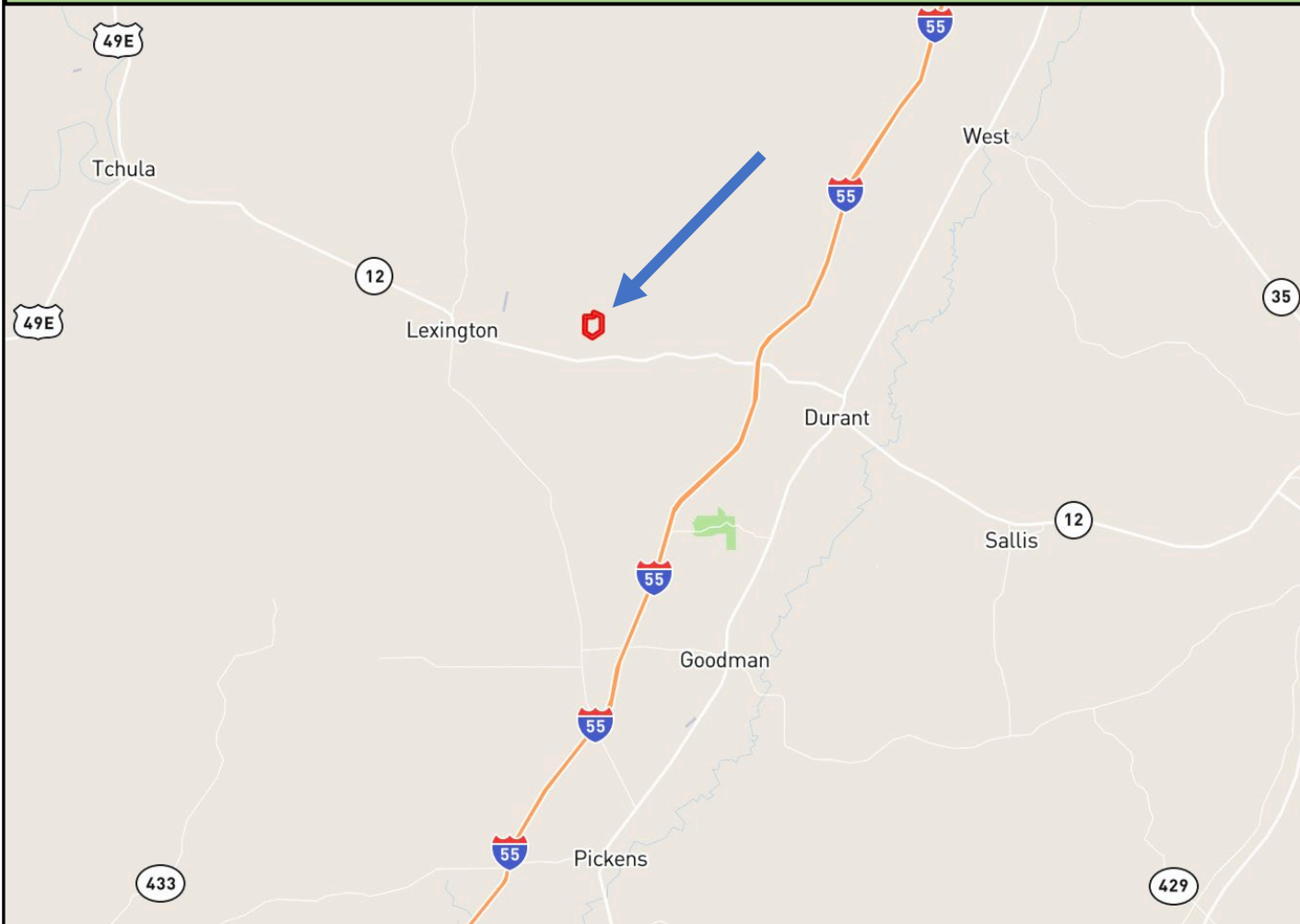
## TomSmithLandandHomes.com

Information is believed to be accurate but not guaranteed.





# Directional Map



**Directions From from intersection of I-55 and Gluckstadt Road in Madison, MS:** Travel northeast on I-55 N for 43.7 miles. Take exit 156 to merge onto MS-12 and travel 4.6 miles. Make a right turn onto Doc Davis road and travel 1.2 miles. The property will be on your right. [GOOGLE MAP HERE](#)



**JOHN DELPAPA**, REALTOR®  
John@TomSmithLand.com  
662.268.6333 office | 662.788.2455 cell



Expect More. Get More.

*Call us today!*



**HARPER DAY**, REALTOR®  
Harper@TomSmithLand.com  
662.268.6333 office | 662.694.9751 cell

**TomSmithLandandHomes.com**

Information is believed to be accurate but not guaranteed.

