

Cute Cottage in Bolivar County

207 N First Ave Cleveland, MS



\$135,000

Looking for a cozy home in Cleveland, MS? Take a look at this 1400+/- square foot home with three bedrooms and two bathrooms. The Bolivar County home features original hardwood floors in the den and carpet for comfort in the bedrooms. The kitchen is a cute galley style. This home is a must see!! Call today to for a private showing.

Directions from the Intersection of Hwy 8 and Hwy 61 in Cleveland, MS: Travel west on Hwy 8 towards N. Chrisman Ave for approximately .8 miles. Turn left onto N. First Ave and the destination will be on the right.



call me today!

TRACEY BELL, MANAGING BROKER

Tracey@TomSmithLand.com

662.441.2500 **office** | 662.719.4720 **cell**



Expect More. Get More.

TomSmithLandandHomes.com

Information is believed to be accurate but not guaranteed.



TRACEY BELL, MANAGING BROKER
 Tracey@TomSmithLand.com
 662.441.2500 office | 662.719.4720 cell



TomSmithLandandHomes.com



TRACEY BELL, MANAGING BROKER
 Tracey@TomSmithLand.com
 662.441.2500 office | 662.719.4720 cell



TomSmithLandandHomes.com

Information is believed to be accurate but not guaranteed.

AERIAL MAP



[Click for Interactive Map](#)



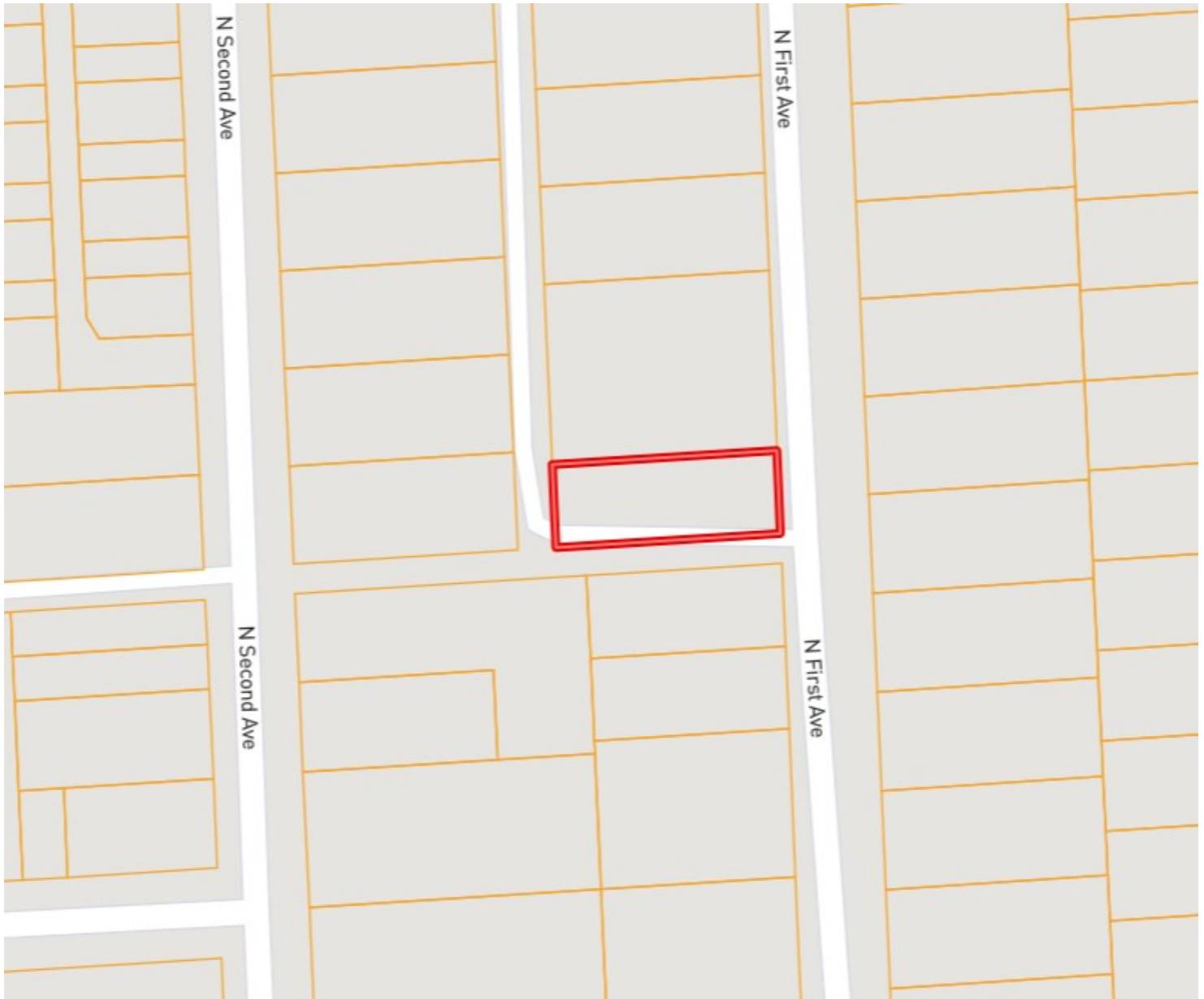
TRACEY BELL, MANAGING BROKER
Tracey@TomSmithLand.com
662.441.2500 **office** | 662.719.4720 **cell**



TomSmithLandandHomes.com

Information is believed to be accurate but not guaranteed.

OWNERSHIP MAP



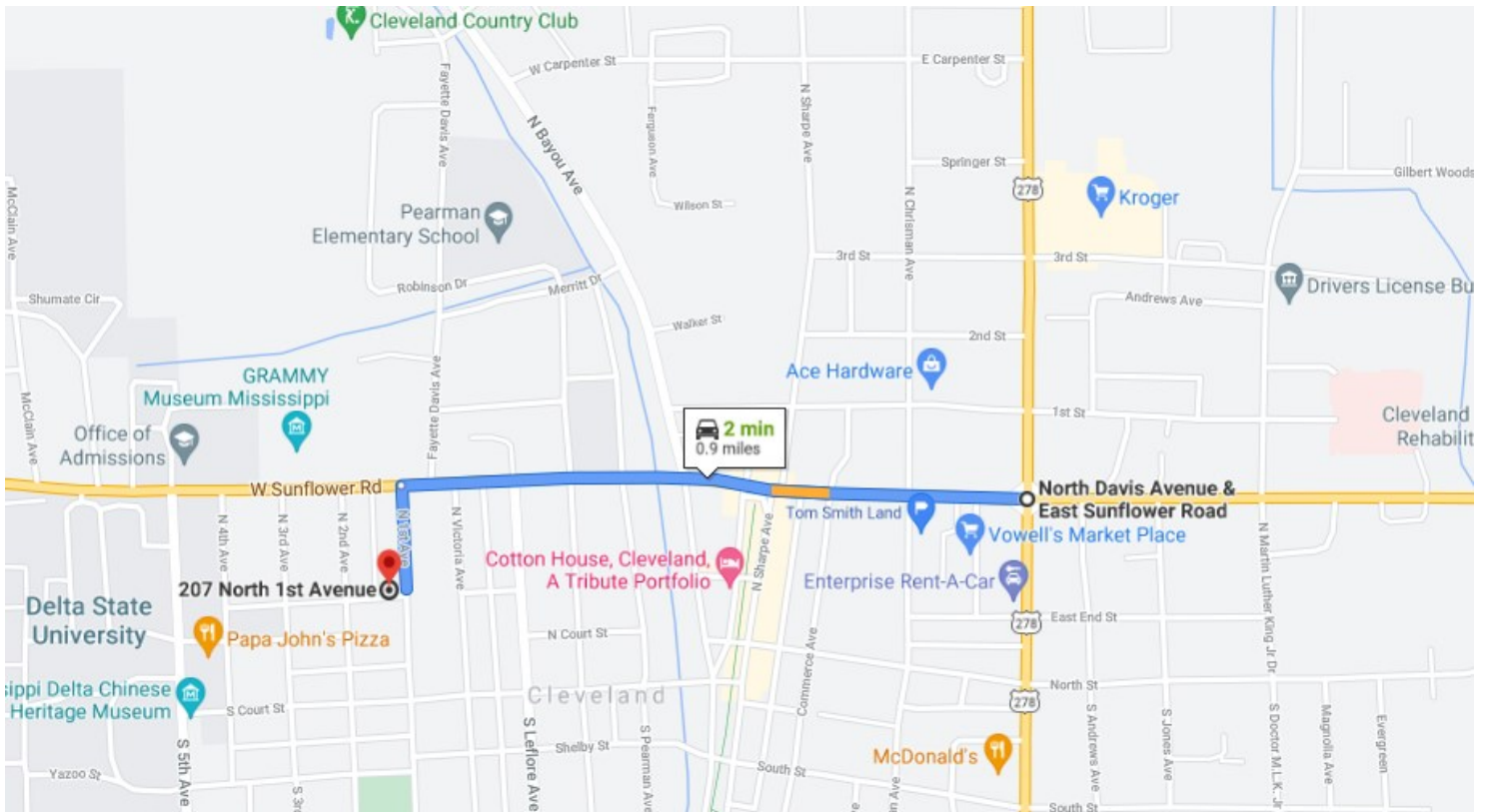
TRACEY BELL, MANAGING BROKER
Tracey@TomSmithLand.com
662.441.2500 **office** | 662.719.4720 **cell**



TomSmithLandandHomes.com

Information is believed to be accurate but not guaranteed.

DIRECTIONAL MAP



Directions from the Intersection of Hwy 8 and Hwy 61 in Cleveland, MS: Travel west on Hwy 8 towards N. Chrisman Ave for approximately .8 miles. Turn left onto N. First Ave and the destination will be on the right.



call me today!

TRACEY BELL, MANAGING BROKER
Tracey@TomSmithLand.com
662.441.2500 **office** | 662.719.4720 **cell**



TomSmithLandandHomes.com

Information is believed to be accurate but not guaranteed.