



## 75+/- Acre Recreational Tract Jefferson Davis County, MS



**\$239,000**

3951 Highway 42 Bassfield, MS 39421

This 75+/- acre tract, located on MS-HWY 42 in Jefferson Davis County, MS, is a must see! This property has tons of improvements, including a 20x30 metal shop with a concrete slab, custom shelving, bathroom, plumbing and electricity. A metal pole barn is in place for equipment storage. The property does have community water access nearby in addition to a 200 foot well. 10+/- year old pines cover the property, with a pond that could be used for fishing in the future. It has approximately 2,300 feet of road frontage on highway 42 and approximately 1,500 feet on S Williamsburg Road. There are three entrances to the property, two are gated, one with a Mighty Mule. A beautiful house site has been cleared, with a driveway from S Williamsburg Road. Ample fire lines and multiple trails are well maintained, you can drive a truck through all of them, so it has an excellent road system.

Call Trinity to schedule a viewing!

Directions from Bassfield, MS: Travel south on Caraway Avenue toward Foote St/Gen Robert E Blount Drive for 0.2 miles. Turn left onto MS-42 E. Travel 0.6 miles and the property is on the right.



2011-2020  
BEST  
BROKERAGES

*call me today!*

**TRINITY WEBB**, REALTOR®  
Trinity@TomSmithHomes.com  
601.990.5070 office | 769.218.7860 cell



Expect More. Get More.

**TomSmithLandandHomes.com**

Information is believed to be accurate but not guaranteed.



2011-2020  
NATIONAL  
BEST  
BROKERAGES

*call me today!*

**TRINITY WEBB**, REALTOR®  
Trinity@TomSmithHomes.com  
601.990.5070 office | 769.218.7860 cell



Expect More. Get More.

**TomSmithLandandHomes.com**

Information is believed to be accurate but not guaranteed.



2011-2020  
FRANCHISE  
500  
BEST  
BROKERAGES

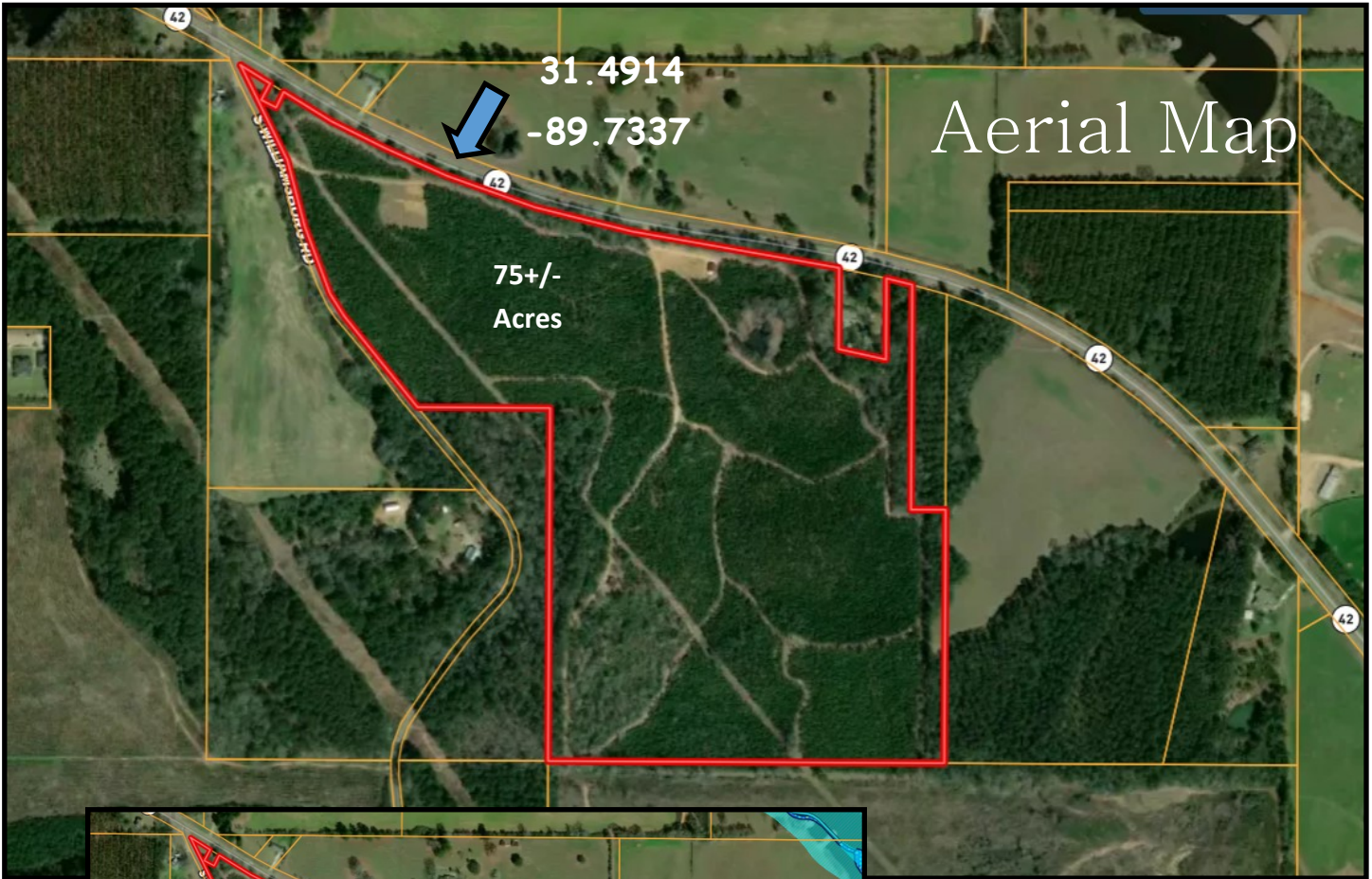
*Call me today!*

**TRINITYWEBB**, REALTOR®  
Trinity@TomSmithHomes.com  
601.990.5070 office | 769.218.7860 cell



**TomSmithLandandHomes.com**

Information is believed to be accurate but not guaranteed.



Aerial Map



Flood Map



2011-2020  
BEST  
BROKERAGES

*call me today!*

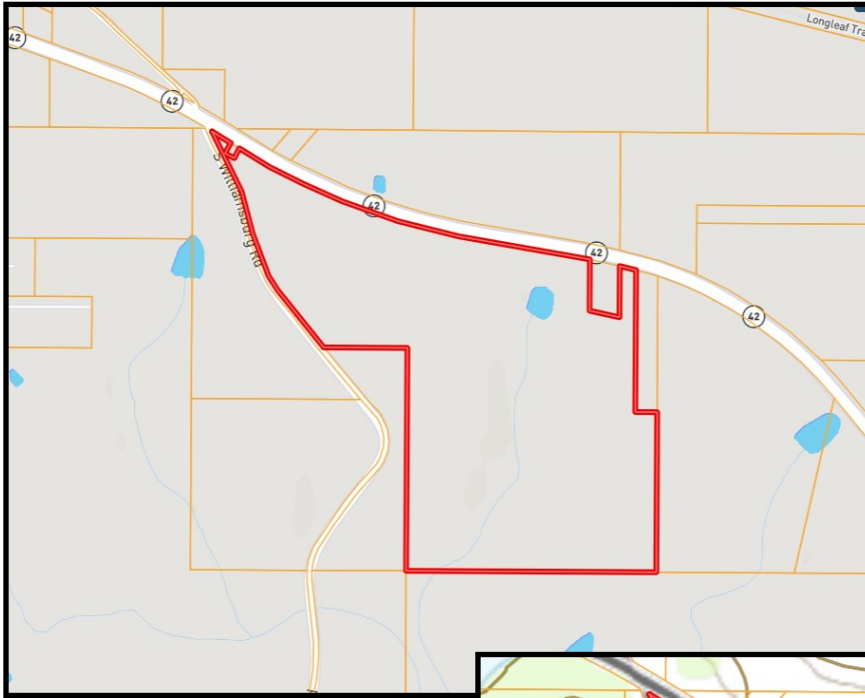
**TRINITY WEBB**, REALTOR®  
Trinity@TomSmithHomes.com  
601.990.5070 office | 769.218.7860 cell



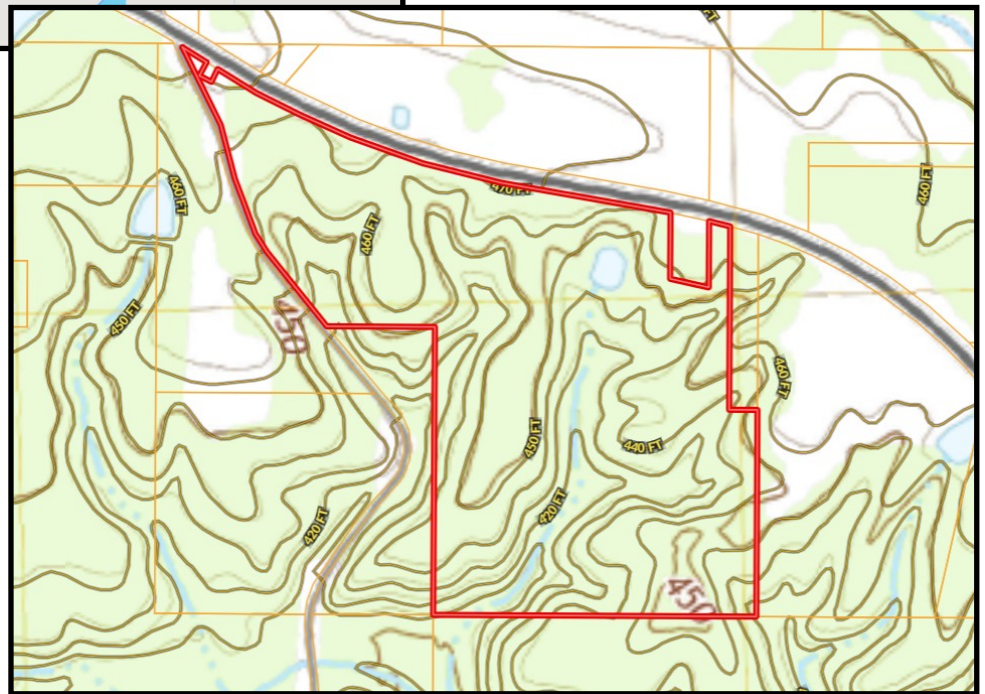
Expect More. Get More.

**TomSmithLandandHomes.com**

Information is believed to be accurate but not guaranteed.



Ownership  
Map



Topo  
Map



*call me today!*

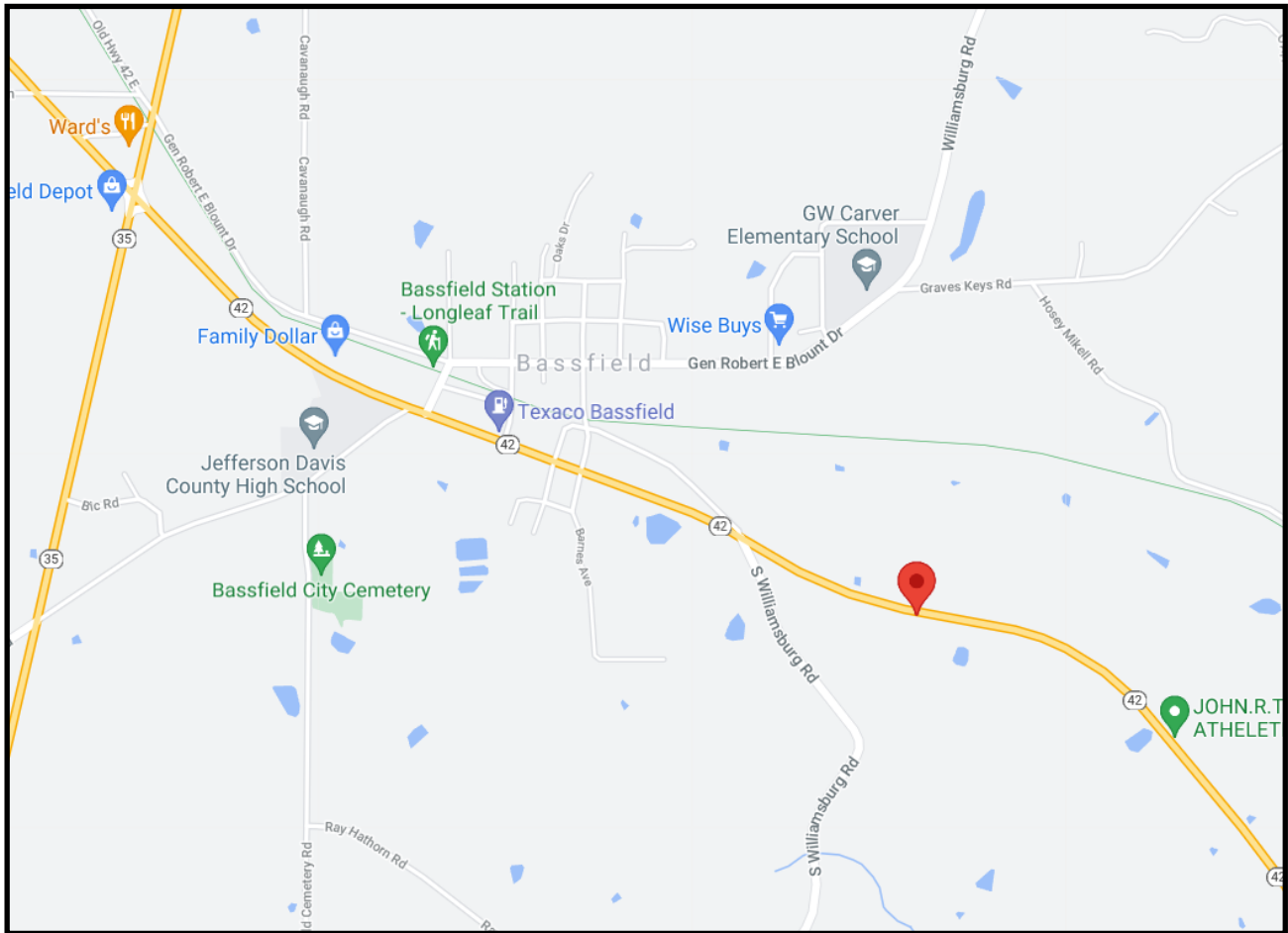
**TRINITY WEBB**, REALTOR®  
Trinity@TomSmithHomes.com  
601.990.5070 office | 769.218.7860 cell



Expect More. Get More.

**TomSmithLandandHomes.com**

Information is believed to be accurate but not guaranteed.



## Directional Map

3951 Highway 42 Bassfield, MS 39421

Directions from Bassfield, MS: Travel south on Caraway Avenue toward Foote St/Gen Robert E Blount Drive for 0.2 miles. Turn left onto MS-42 E. Travel 0.6 miles and the property is on the right.



2011-2020  
BEST  
BROKERAGES

*call me today!*

**TRINITY WEBB**, REALTOR®  
Trinity@TomSmithHomes.com  
601.990.5070 office | 769.218.7860 cell



Expect More. Get More.

**TomSmithLandandHomes.com**

Information is believed to be accurate but not guaranteed.