

Mississippi Delta Hunting Tract

216± ACRES IN YAZOO COUNTY, MS



\$2,450/ACRE

Welcome to your new hunting tract overlooking the MS Delta in Yazoo County, MS. This tract is perfect for the avid hunter looking for a place convenient to the metro area, with water and power available for a camp, as well as established food plots and a road system. Turn this place into an outstanding trophy hunting tract in no time at all! Located only six minutes to the south of Yazoo City, the property fronts Warehouse Road and sits behind a gated entrance. There are several spots to clear out for your cabin or camper and enjoy the views overlooking the Mississippi Delta. Come take a look at this hidden gem and see all the deer trails and sign for yourself! Tracts like this do not come around often and are a rare find in the Delta. Call Tom today!

DIRECTIONS FROM YAZOO COUNTY, MS: Travel Old Highway 3 South for 2.6 miles. Turn left on Warehouse Road, after .6 miles the entrance to the property will be on your left. [GOOGLE MAP LINK](#)



TOM SMITH

ALC®, BROKER

Office: 601.898.2772

Cell: 601.454.9397

Tom@TomSmithLand.com



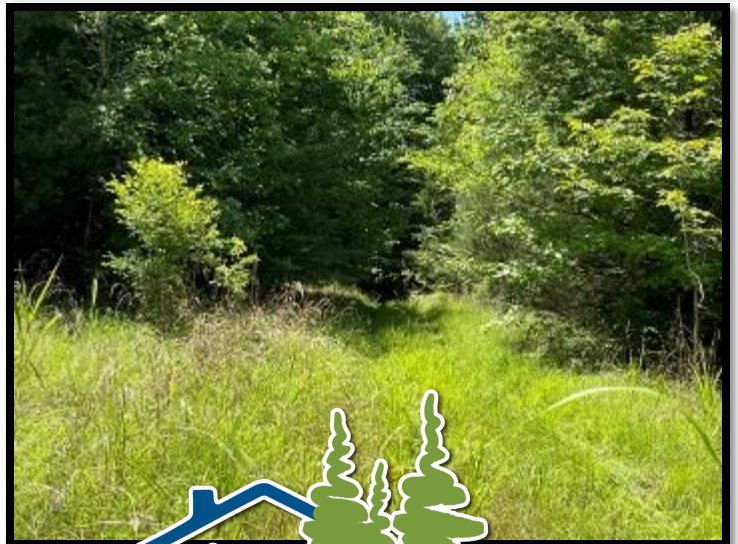
Expect More. Get More.

Call The Land Man Today!

TomSmithLandandHomes.com

Information is believed to be accurate but not guaranteed.





TOM SMITH

ALC®, BROKER

Office: 601.898.2772

Cell: 601.454.9397

Tom@TomSmithLand.com



Expect More. Get More.

Call The Land Man Today!

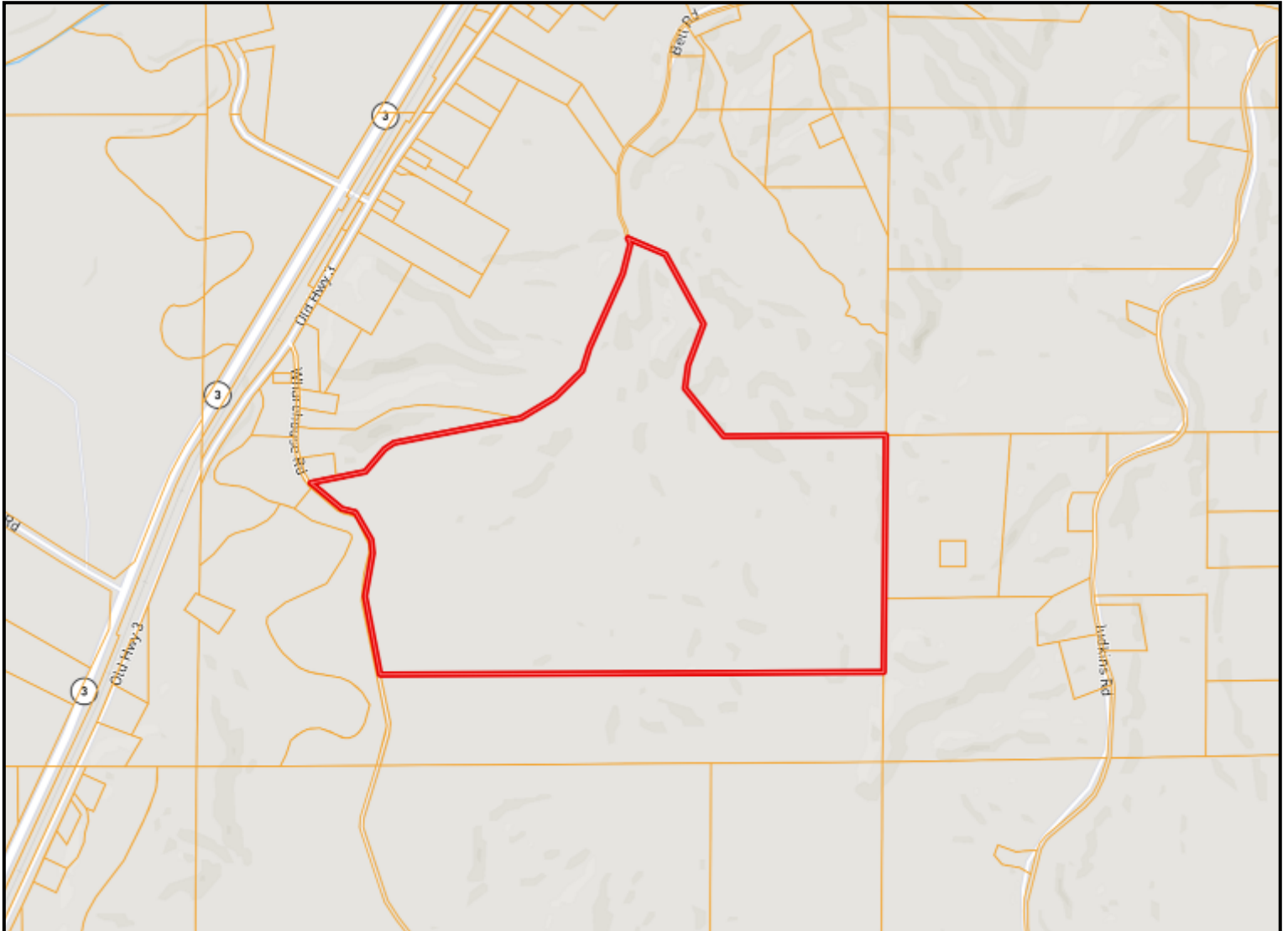
TomSmithLandandHomes.com

Information is believed to be accurate but not guaranteed.



Live!Report

OWNERSHIP MAP



TOM SMITH

ALC®, BROKER

Office: 601.898.2772

Cell: 601.454.9397

Tom@TomSmithLand.com



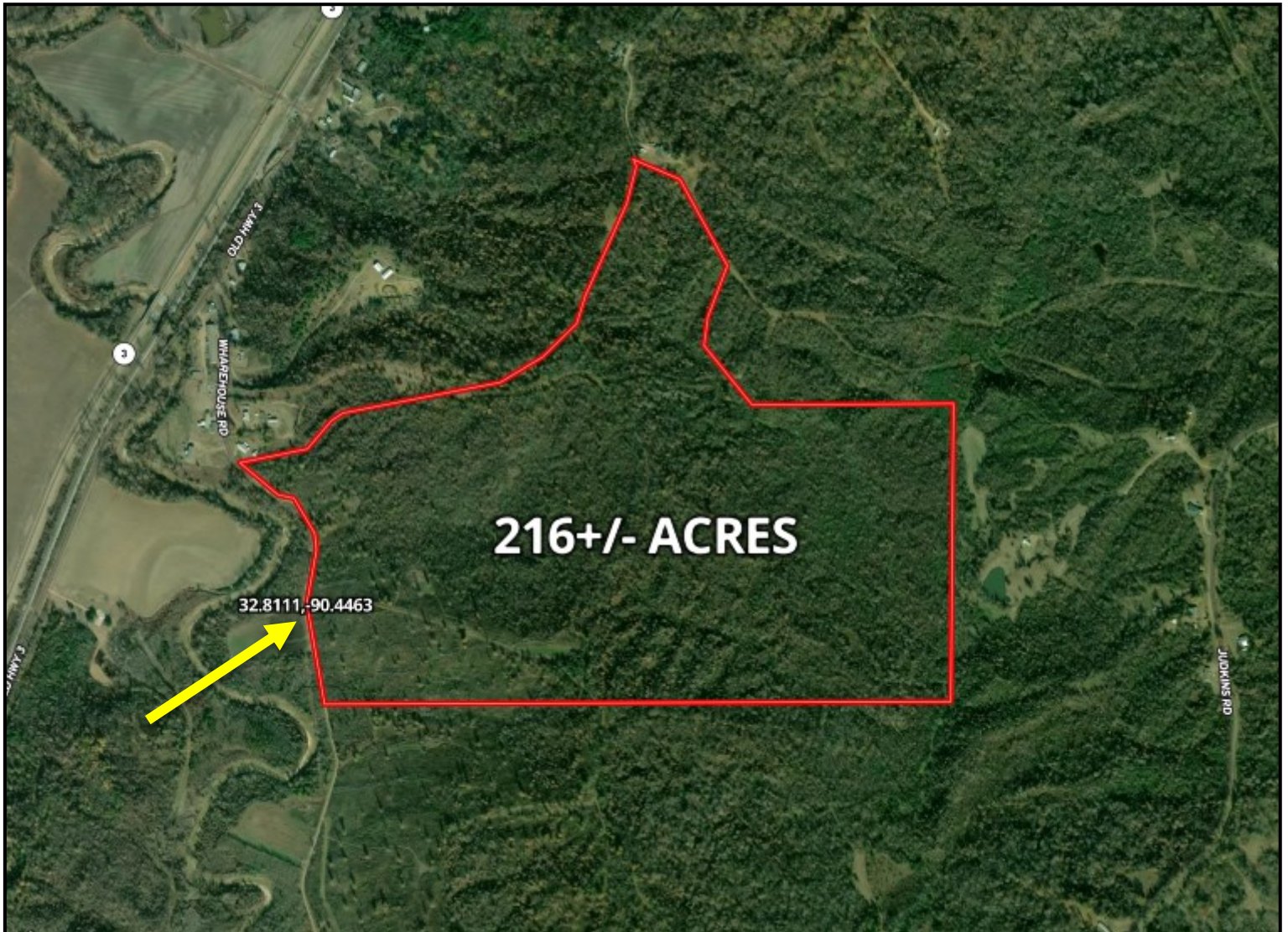
Call The Land Man Today!

TomSmithLandandHomes.com

Information is believed to be accurate but not guaranteed.



AERIAL MAP



[CLICK HERE FOR AN INTERACTIVE MAP](#)

TOM SMITH

ALC®, BROKER

Office: 601.898.2772

Cell: 601.454.9397

Tom@TomSmithLand.com



Expect More. Get More.

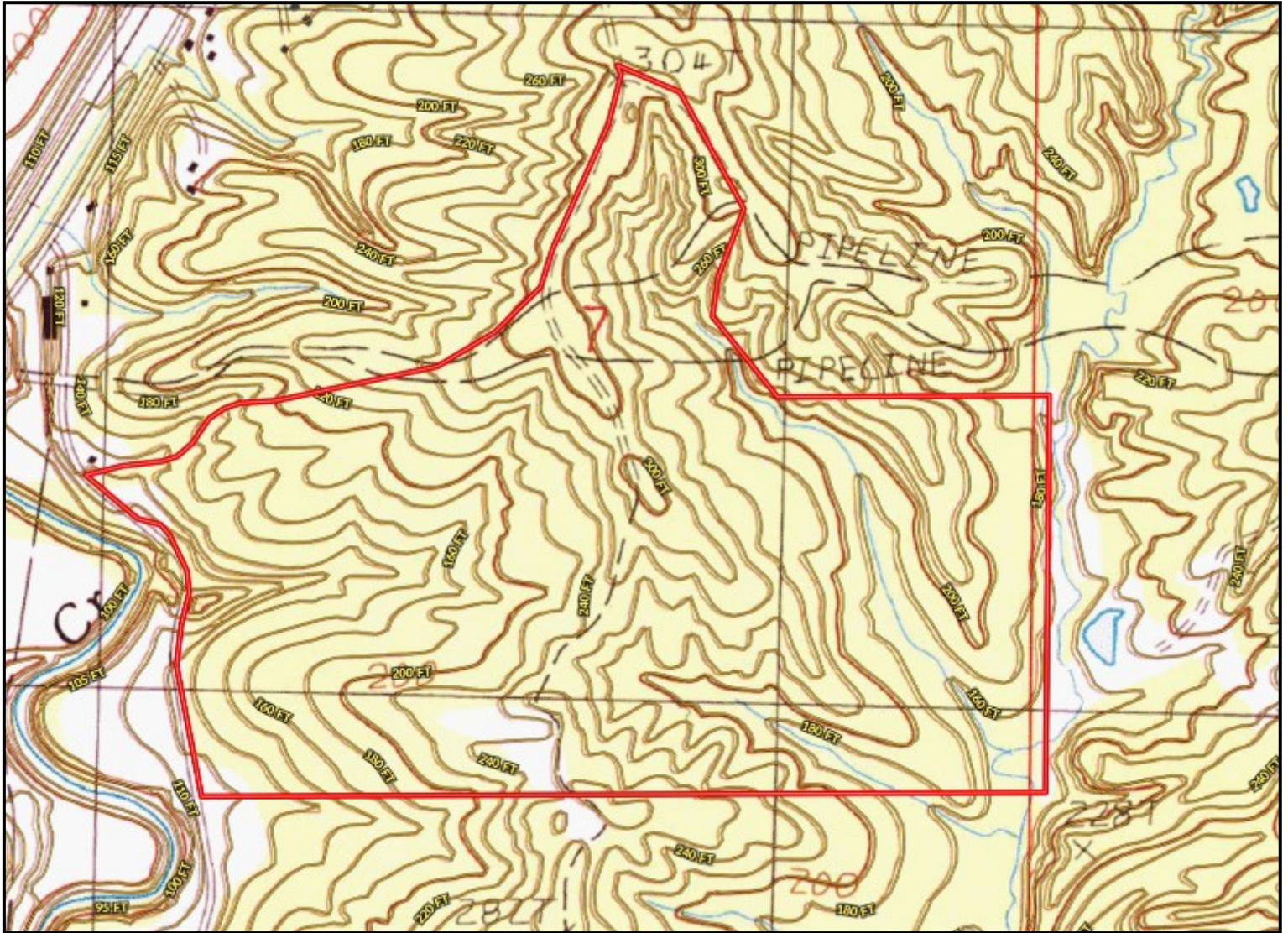
Call The Land Man Today!

TomSmithLandandHomes.com

Information is believed to be accurate but not guaranteed.



TOPO MAP



TOM SMITH

ALC®, BROKER

Office: 601.898.2772

Cell: 601.454.9397

Tom@TomSmithLand.com



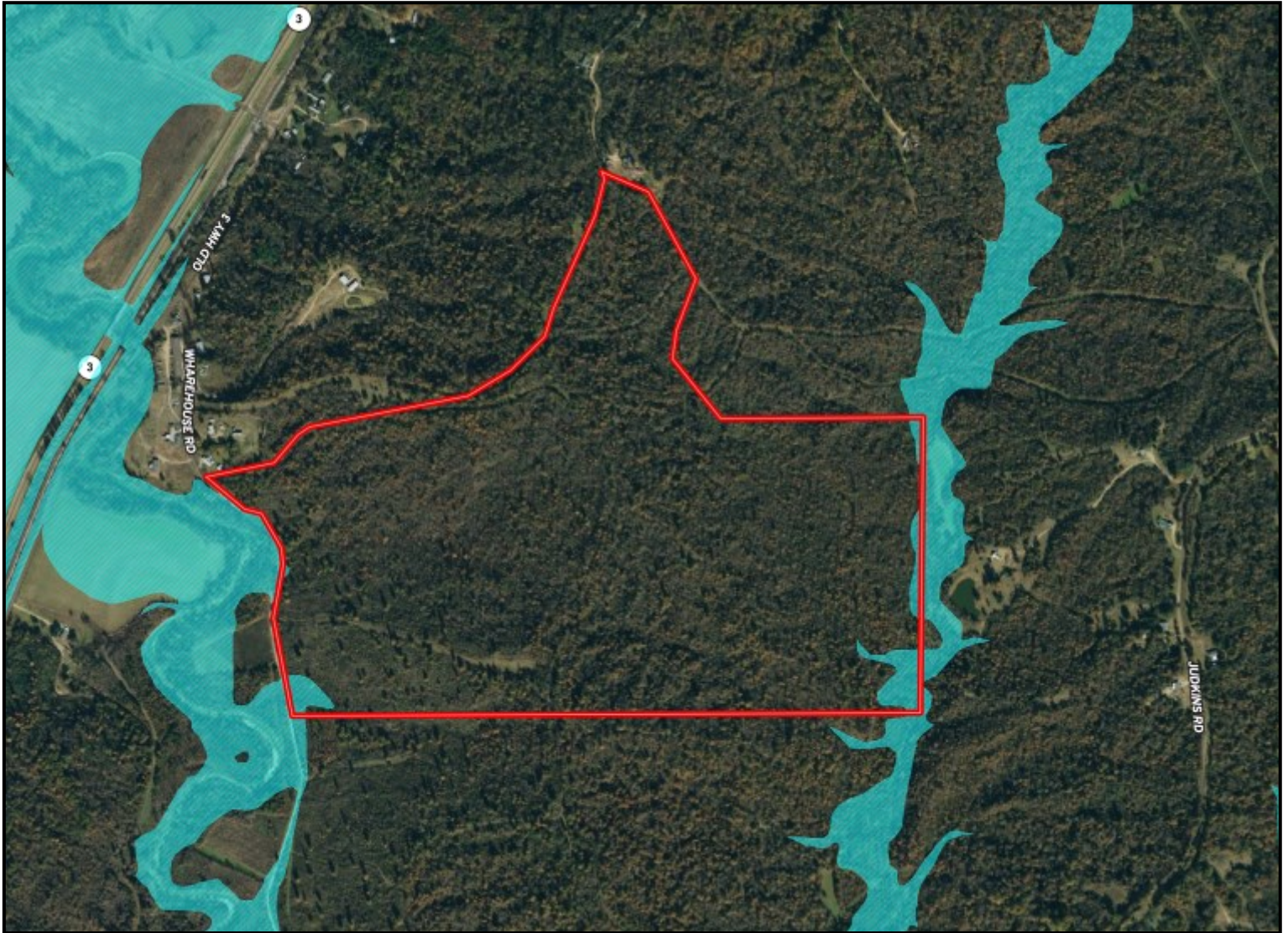
Call The Land Man Today!

TomSmithLandandHomes.com

Information is believed to be accurate but not guaranteed.



FLOOD MAP



TOM SMITH

ALC®, BROKER

Office: 601.898.2772

Cell: 601.454.9397

Tom@TomSmithLand.com



Expect More. Get More.

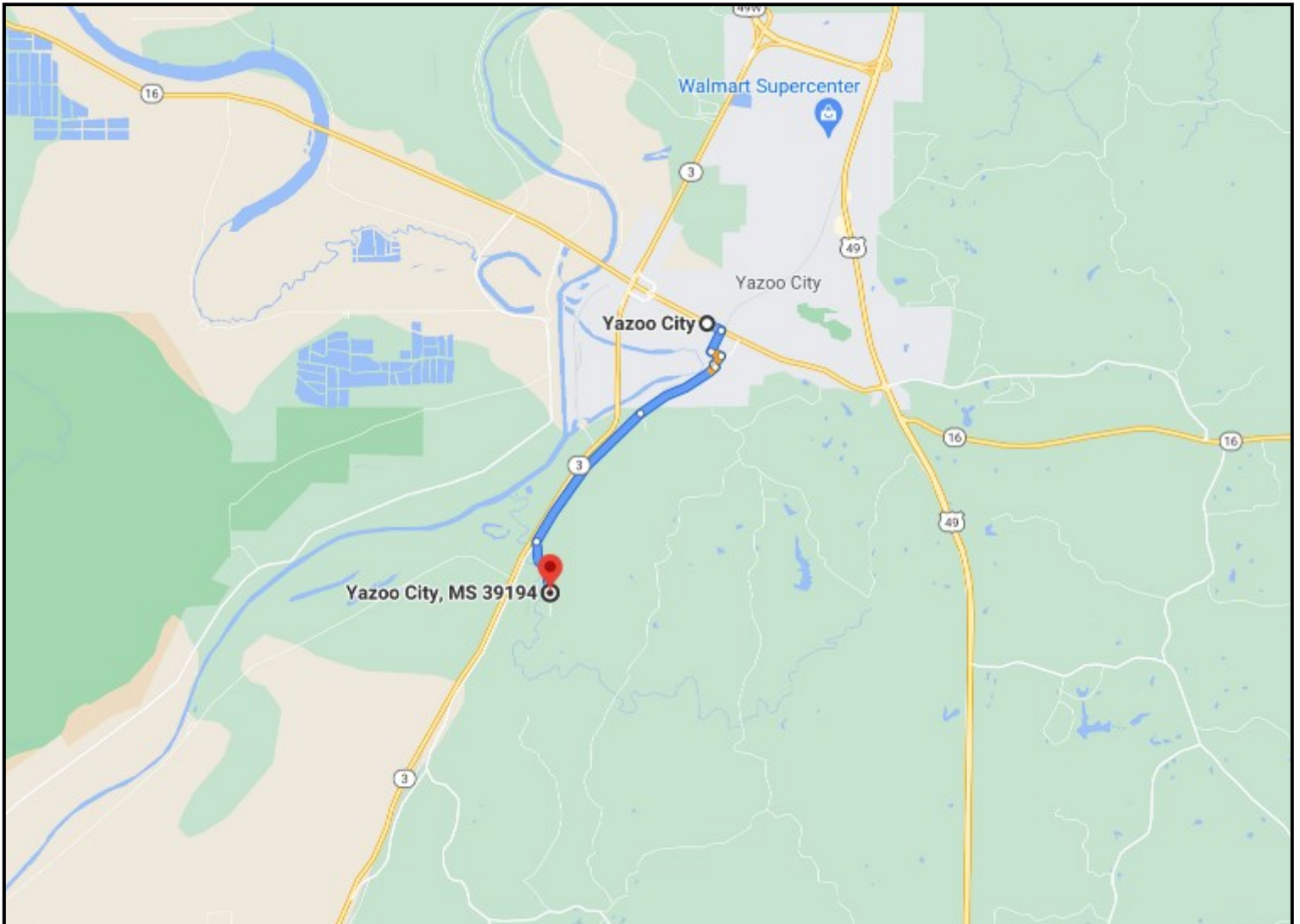
Call The Land Man Today!

TomSmithLandandHomes.com

Information is believed to be accurate but not guaranteed.



DIRECTIONAL MAP



DIRECTIONS FROM YAZOO CITY, MS: Travel Old Highway 3 South for 2.6 miles. Turn left on Warehouse Road, after .6 miles the entrance to the property will be on your left.

[GOOGLE MAP LINK](#)



**TOM
SMITH**

ALC®, BROKER

Office: 601.898.2772

Cell: 601.454.9397

Tom@TomSmithLand.com



Call The Land Man Today!

TomSmithLandandHomes.com

Information is believed to be accurate but not guaranteed.

