

Investment Opportunity in Bolivar County

5 West Carpenter St. Cleveland, MS 38732



This 4.0 +/- acre property in Bolivar County, MS is a great investment opportunity. Currently, 28 individually owned mobile homes are on site, leasing space, annually. The tenants are responsible for all utilities and connection to city services as well as maintenance and grounds upkeep. This tract is a Sixteenth Section lease that will end in the year 2073 and is also a R6 zoning for mobile homes. City water and sewer along with gas, power and cable are available at the property. Call Charlie today!

Directions from Highway 8 and Highway 61 in Cleveland, MS: Travel north on Hwy 61 for approximately 0.5 miles and turn left onto E. Carpenter Street and travel west for 0.4 miles and the property is on both sides of W. Carpenter Street.



call me today!

CHARLIE HEINSZ, REALTOR®

Charlie@TomSmithLand.com

662.441.2500 office | 662.719.7218 cell



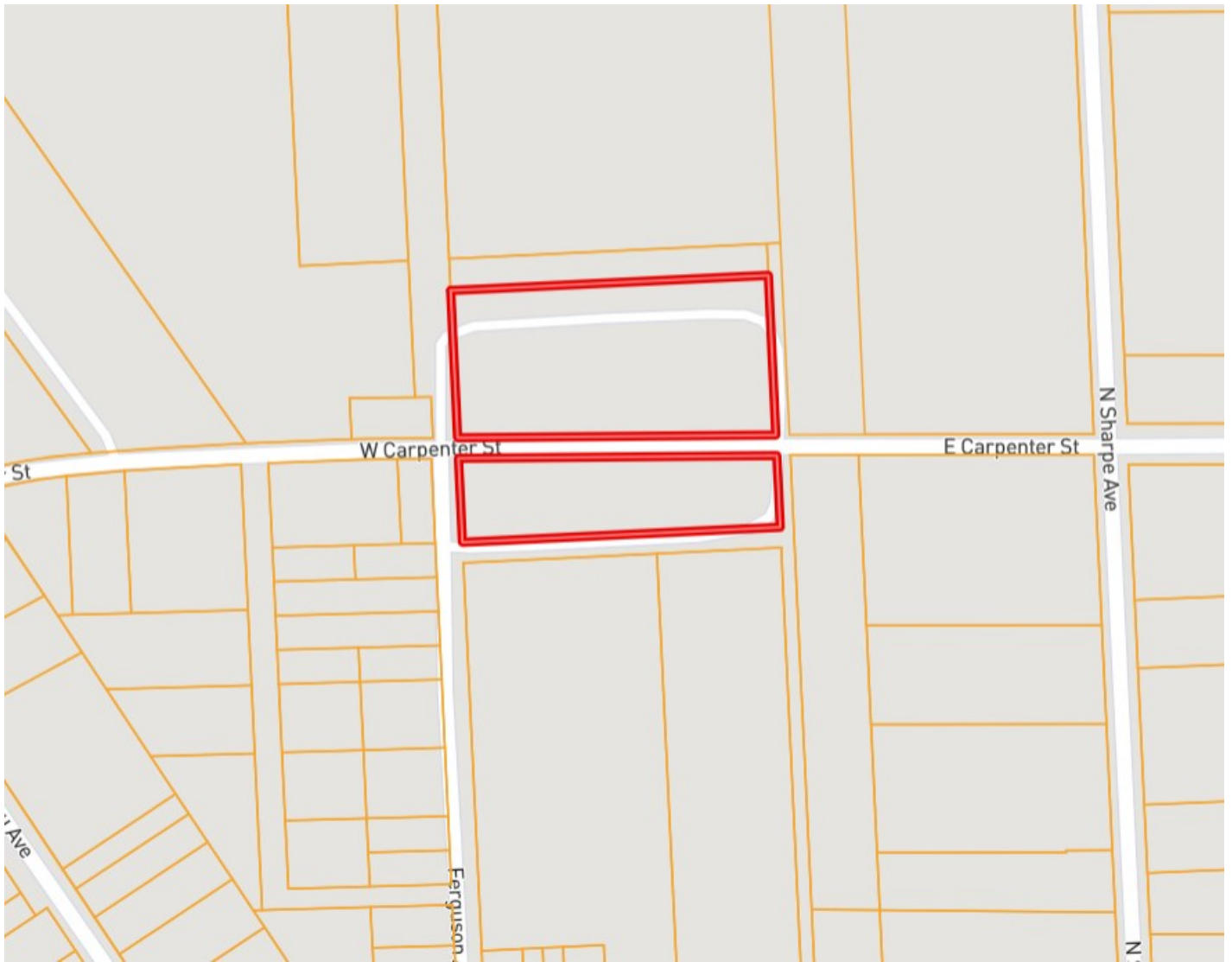
Expect More. Get More.

TomSmithLandandHomes.com

Information is believed to be accurate but not guaranteed.



OWNERSHIP MAP



CHARLIE HEINSZ, REALTOR®
Charlie@TomSmithLand.com
662.441.2500 office | 662.719.7218 cell

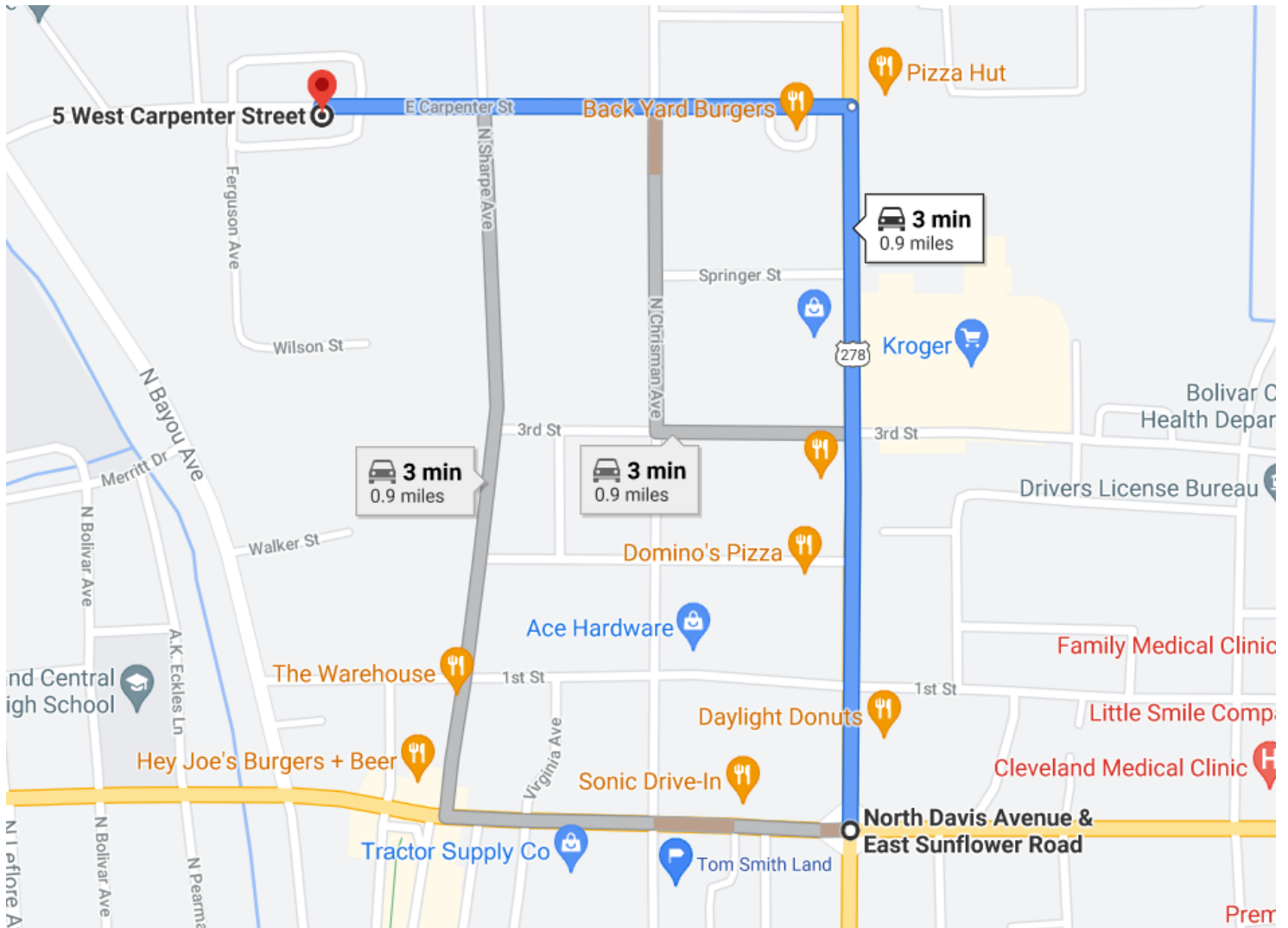


Expect More. Get More.

TomSmithLandandHomes.com

Information is believed to be accurate but not guaranteed.

DIRECTIONAL MAP



Directions from Highway 8 and Highway 61 in Cleveland, MS: Travel north on Hwy 61 for approximately 0.5 miles and turn left onto E. Carpenter Street and travel west for 0.4 miles and the property is on both sides of W. Carpenter Street.



call me today!

CHARLIE HEINSZ, REALTOR®

Charlie@TomSmithLand.com

662.441.2500 office | 662.719.7218 cell



Expect More. Get More.

TomSmithLandandHomes.com

Information is believed to be accurate but not guaranteed.