

Development Opportunity

Washington County

10.69 +/- Acres / Greenville, MS



\$450,000

Take a look at this 10.69+/- acre development potential centrally located in Greenville, MS. Just east of the subject is St. Joseph School, to the west is the Hampton Inn, to the rear of the property is the Greenville Country Club Golf Course. The Washington County tract is zoned C-4 (commercial). This is an excellent location for condos, apartments, or a small business with utility services near the property. There is approximately 457+/- ft of frontage on VFW Road, 947+/- ft depth on the east, and 920+/- ft depth on the west. Why wait, call today! (662)441-2500

Directions from Greenville, MS: Travel west on Hwy 82 towards Martin Luther King Jr Blvd for approximately 3 miles, turn left onto VFW Road, continue for .4 miles and the destination will be on the left.



call me today!

TRACEY BELL, MANAGING BROKER

Tracey@TomSmithLand.com

662.441.2500 office | 662.719.4720 cell



Expect More. Get More.

TomSmithLandandHomes.com

Information is believed to be accurate but not guaranteed.

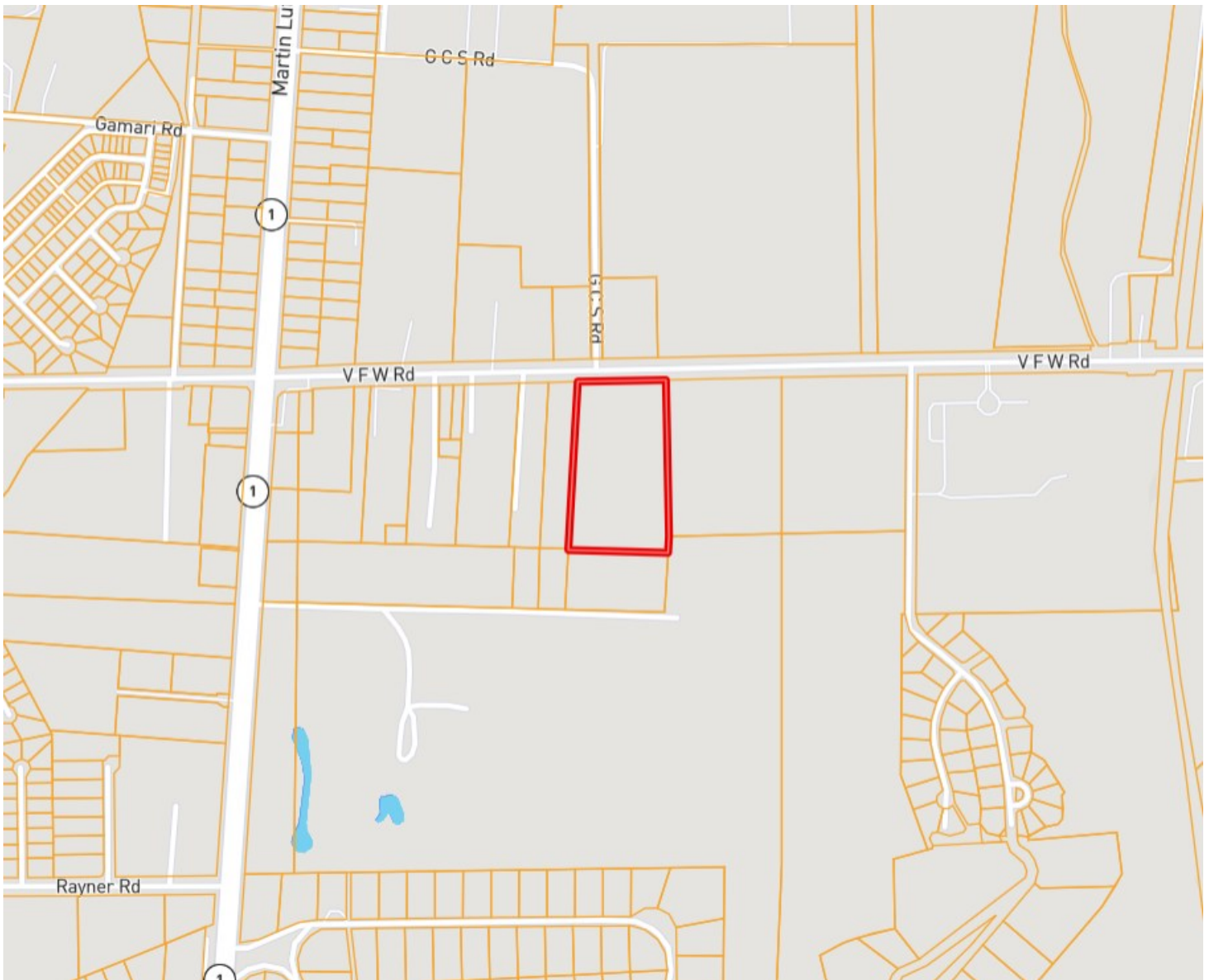


TRACEY BELL, MANAGING BROKER
 Tracey@TomSmithLand.com
 662.441.2500 office | 662.719.4720 cell



TomSmithLandandHomes.com

OWNERSHIP MAP



TRACEY BELL, MANAGING BROKER
Tracey@TomSmithLand.com
662.441.2500 **office** | 662.719.4720 **cell**



TomSmithLandandHomes.com

Information is believed to be accurate but not guaranteed.

AERIAL MAP



[Click for Interactive Map](#)

TRACEY BELL, MANAGING BROKER

Tracey@TomSmithLand.com

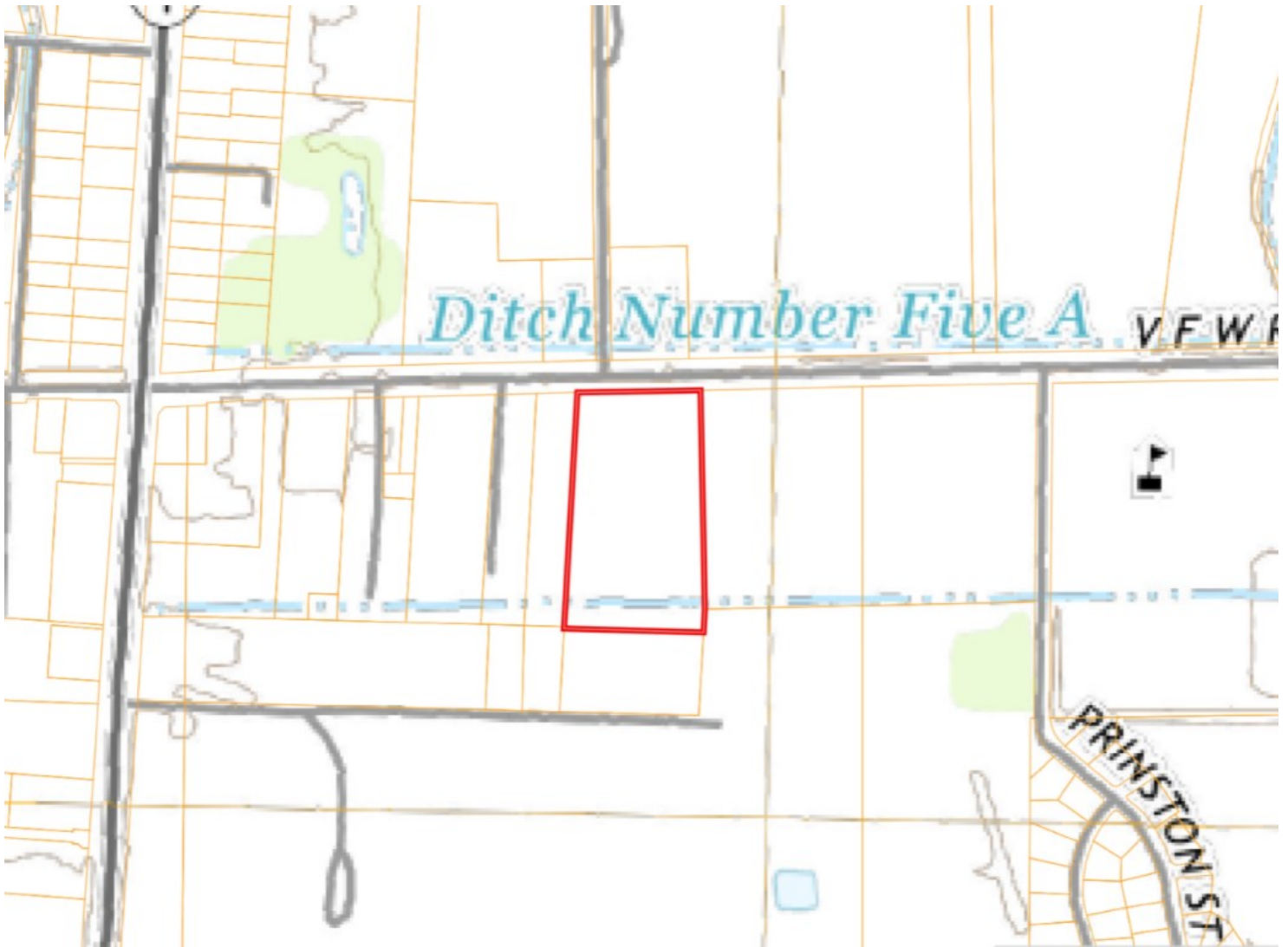
662.441.2500 office | 662.719.4720 cell



TomSmithLandandHomes.com

Information is believed to be accurate but not guaranteed.

TOPO MAP



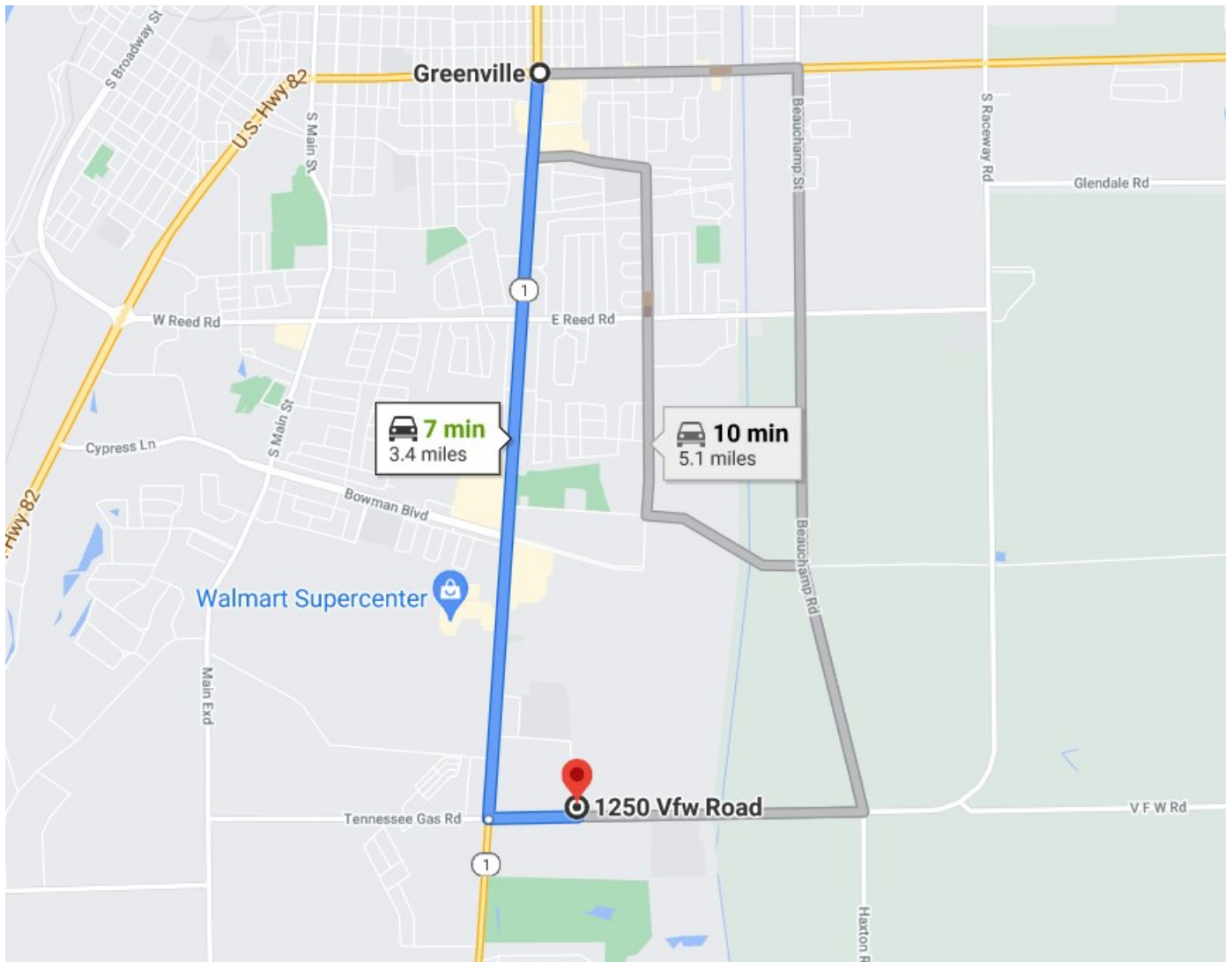
TRACEY BELL, MANAGING BROKER
Tracey@TomSmithLand.com
662.441.2500 **office** | 662.719.4720 **cell**



TomSmithLandandHomes.com

Information is believed to be accurate but not guaranteed.

DIRECTIONAL MAP



Directions from Greenville, MS: Travel west on Hwy 82 towards Martin Luther King Jr Blvd for approximately 3 miles, turn left onto VFW Road, continue for .4 miles and the destination will be on the left. [Google Maps Link](#).



call me today!

TRACEY BELL, MANAGING BROKER

Tracey@TomSmithLand.com

662.441.2500 **office** | 662.719.4720 **cell**



Expect More. Get More.

TomSmithLandandHomes.com

Information is believed to be accurate but not guaranteed.