

# 10.69± Acre Development Tract in Washington County, MS



**\$450,000**

Take a look at this 10.69± acre development tract centrally located in Greenville, MS. Just east of the subject property is St. Joseph School, to the west is the Hampton Inn, to the rear of the property is the Greenville Country Club Golf Course. The tract is zoned C-4 (commercial). This is an excellent location for condos, apartments, or a small business with utility services near the property. Since the property is currently under cultivation, this could provide income to developers while plans are being drawn. There is 457± ft of frontage on VFW Road, 947± ft depth on the east, and 920± ft depth on the west. Give Tracey Bell a call to schedule your private showing!



**TRACEY  
BELL**  
MANAGING BROKER  
Office: 662.441.2500  
Cell: 662.719.4720  
Tracey@TomSmithLand.com



**A Real Estate Expert You Can Trust**

TomSmithLandandHomes.com

Information is believed to be accurate but not guaranteed.







TRACEY  
**BELL**

MANAGING BROKER

Office: 662.441.2500

Cell: 662.719.4720

Tracey@TomSmithLand.com



**A Real Estate Expert You Can Trust**  
TomSmithLandandHomes.com

Information is believed to be accurate but not guaranteed.





## 457' ± of VFW Road Frontage

\*Boundary lines are believed to be accurate but not guaranteed

**TRACEY  
BELL**

MANAGING BROKER

Office: 662.441.2500

Cell: 662.719.4720

Tracey@TomSmithLand.com



**A Real Estate Expert You Can Trust**  
TomSmithLandandHomes.com

Information is believed to be accurate but not guaranteed.





# AERIAL MAP



[Click for Interactive Map](#)

TRACEY  
**BELL**

MANAGING BROKER

Office: 662.441.2500

Cell: 662.719.4720

Tracey@TomSmithLand.com

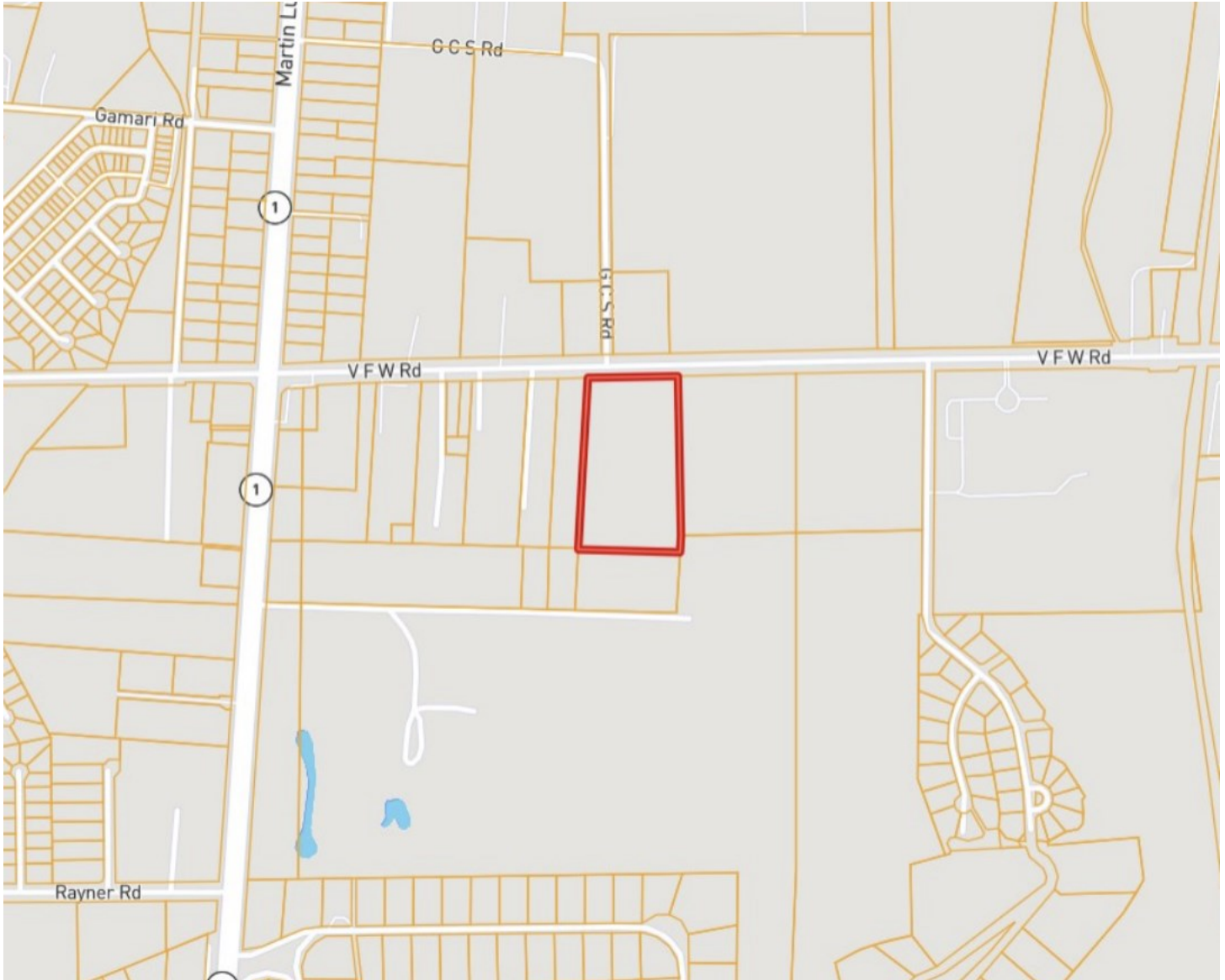


**A Real Estate Expert You Can Trust**  
TomSmithLandandHomes.com

Information is believed to be accurate but not guaranteed.

LandReport  
2011-2023  
**BEST**  
BROKERAGES

# OWNERSHIP MAP



**TRACEY  
BELL**

MANAGING BROKER

Office: 662.441.2500

Cell: 662.719.4720

Tracey@TomSmithLand.com



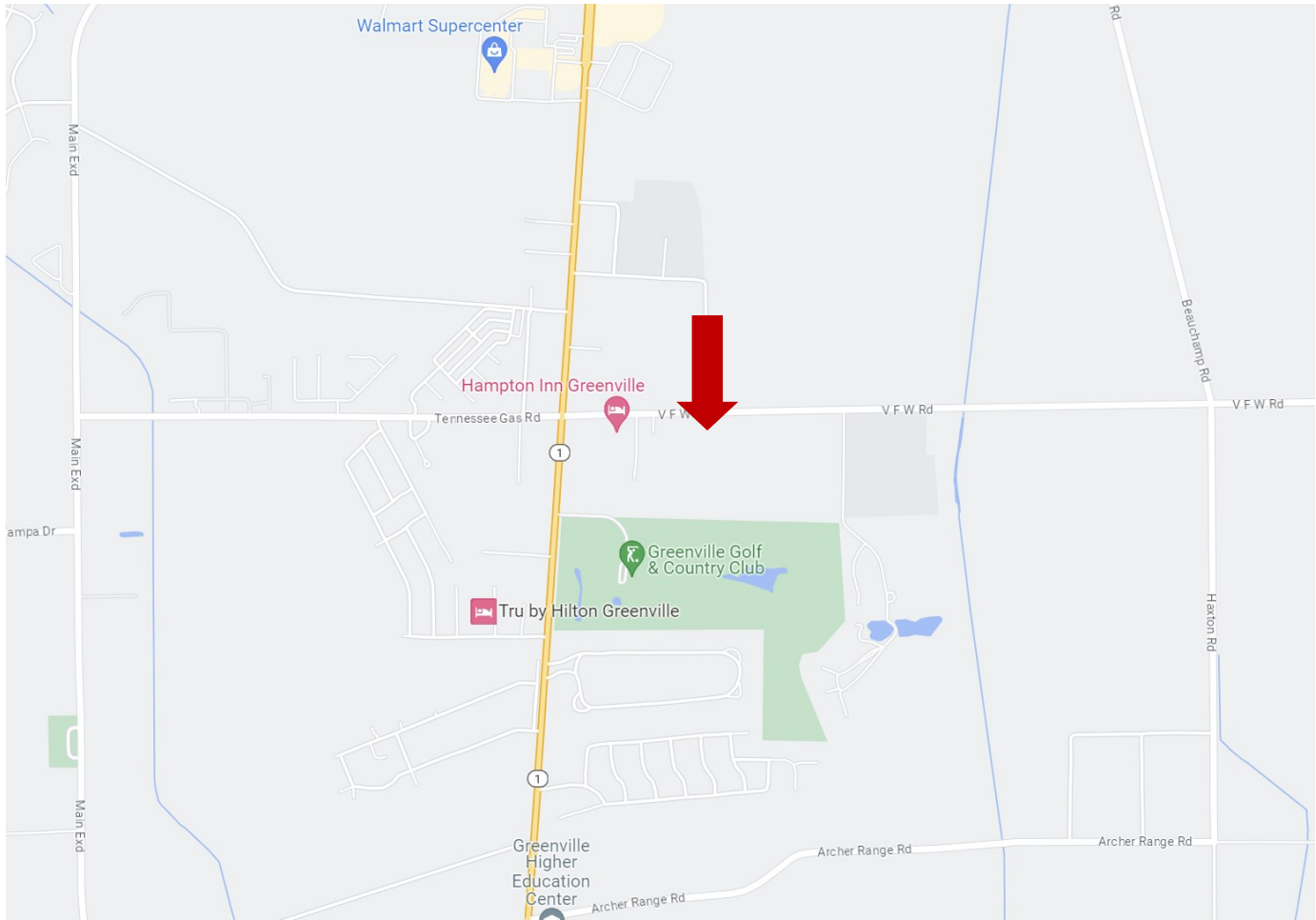
**A Real Estate Expert You Can Trust**  
TomSmithLandandHomes.com

Information is believed to be accurate but not guaranteed.





# DIRECTIONAL MAP



**Address: 1250 VFW Road, Greenville, MS 38701**

**Directions from Greenville, MS:** Travel west on Hwy 82 towards Martin Luther King Jr Blvd for approximately 3 miles, turn left onto VFW Road, continue for .4 miles and the destination will be on the left. **[Google Maps Link.](#)**



**TRACEY  
BELL**

MANAGING BROKER

Office: 662.441.2500

Cell: 662.719.4720

Tracey@TomSmithLand.com



**A Real Estate Expert You Can Trust**

TomSmithLandandHomes.com

Information is believed to be accurate but not guaranteed.

