



Cute Cottage on 1.2+/- Acres Franklin County, MS



Price Drop

\$49,000

307 Bunkley Road Meadville, MS 39653

Take a look at this cute cottage situated on 1.2+/- acres in Meadville, MS. This property is a private little getaway! An arbor covered in flowers leads to a fenced-in front yard and screened-in porch. The Franklin County cottage features 1,120+/- square feet of living space with a living room, dining room, and kitchen on one side, and two bedrooms and two baths on the other. Enjoy a glass of lemonade on the back deck or out in the yard on the swing overlooking the pond. The property offers multiple stand-alone buildings, each with electricity so the uses are unlimited. A quaint, chicken coup is also on site. The property is located on Bunkley Road and shares a boundary line with the Middlefork Country Club of Franklin County which has a golf course. Look no further for your perfect fixer upper! Call Nicole today to schedule a viewing!

Directions from Hwy 84 West in Meadville, MS: Travel Hwy 84 West. Turn left onto Bunkley Road. Travel 0.4 miles and the property will be on the left, tucked in the back. Look for the Tom Smith Land and Homes sign.



13th Report
2011-2020
BEST
BROKERAGES

call me today!

NICOLE NEWELL, REALTOR®

Nicole@TomSmithHomes.com
601.990.5070 office | 601.754.3766 cell



Expect More. Get More.

TomSmithLandandHomes.com

Information is believed to be accurate but not guaranteed.



Call me today!

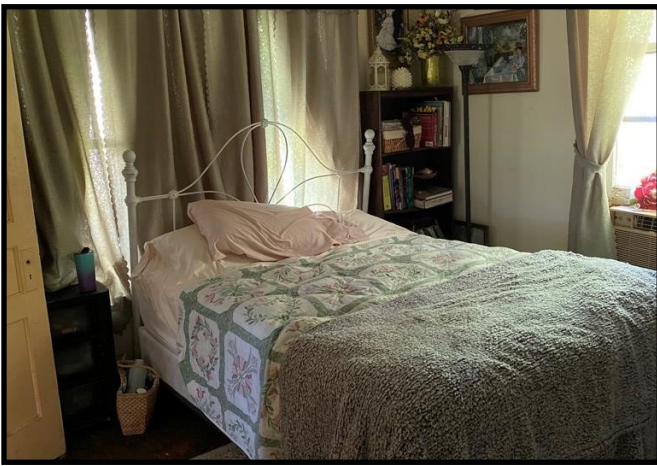
NICOLE NEWELL, REALTOR®
Nicole@TomSmithHomes.com
601.990.5070 office | 601.754.3766 cell



Expect More. Get More.

TomSmithLandandHomes.com

Information is believed to be accurate but not guaranteed.



2011-2020
BEST
BROKERAGES

Call me today!

NICOLE NEWELL, REALTOR®

Nicole@TomSmithHomes.com

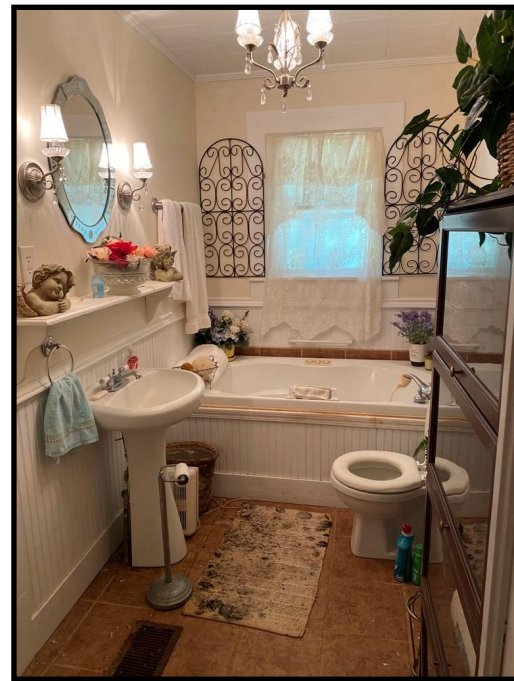
601.990.5070 office | 601.754.3766 cell



Expect More. Get More.

TomSmithLandandHomes.com

Information is believed to be accurate but not guaranteed.



2011-2020
BEST
BROKERAGES

Call me today!

NICOLE NEWELL, REALTOR®

Nicole@TomSmithHomes.com

601.990.5070 office | 601.754.3766 cell



Expect More. Get More.

TomSmithLandandHomes.com

Information is believed to be accurate but not guaranteed.



Aerial Map



Call me today!

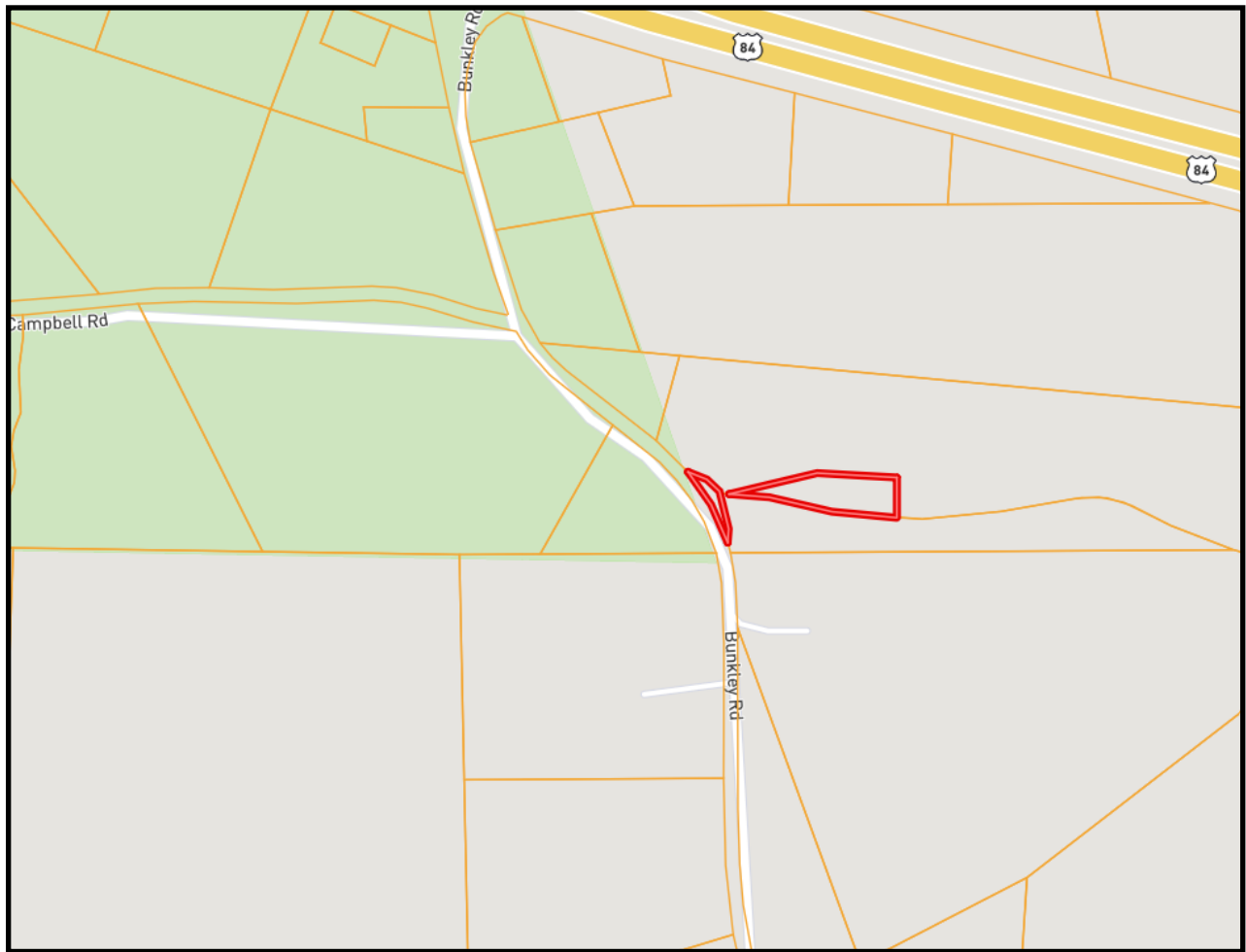
NICOLE NEWELL, REALTOR®
Nicole@TomSmithHomes.com
601.990.5070 office | 601.754.3766 cell



Expect More. Get More.

TomSmithLandandHomes.com

Information is believed to be accurate but not guaranteed.



Ownership Map



Call me today!

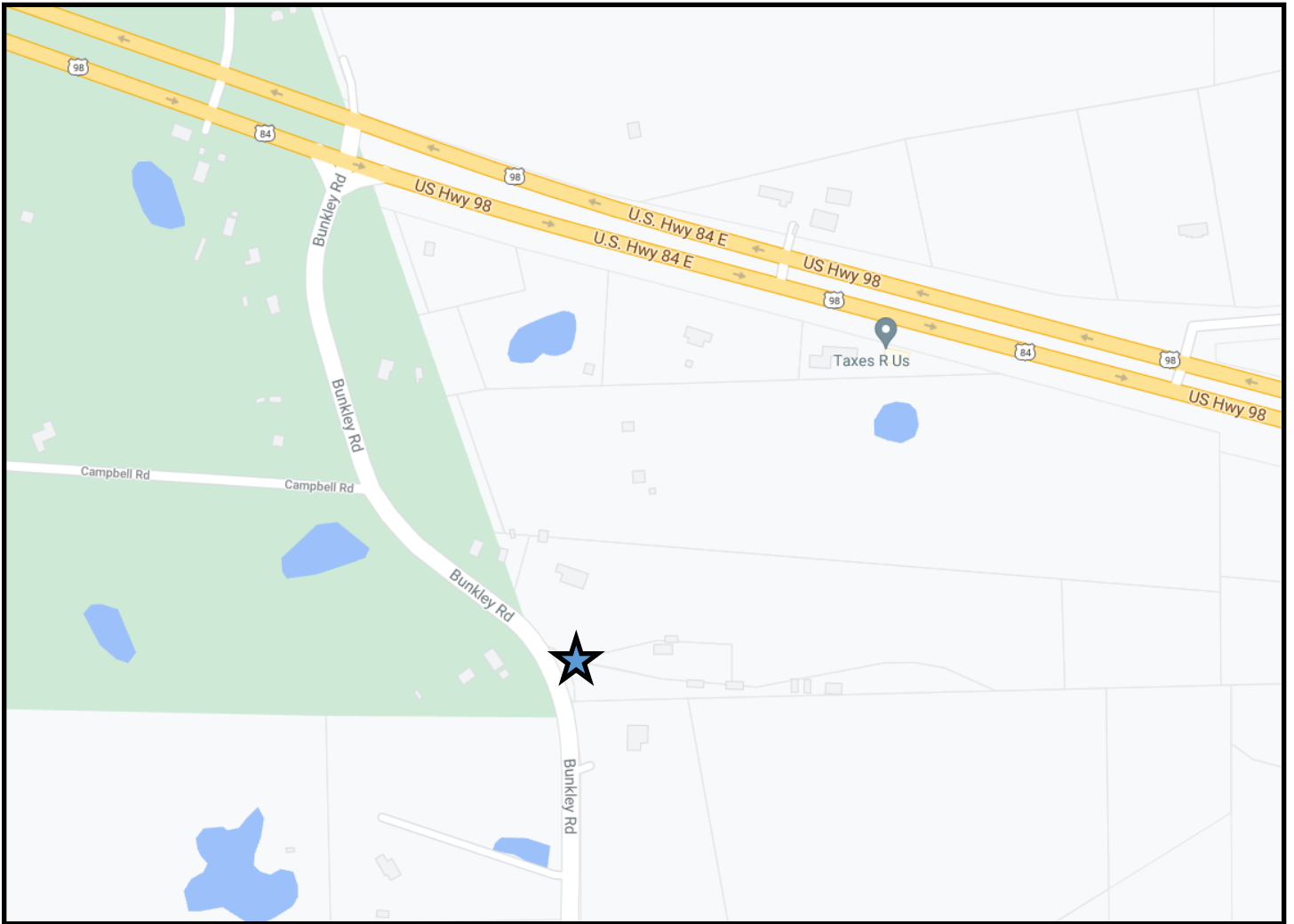
NICOLE NEWELL, REALTOR®
Nicole@TomSmithHomes.com
601.990.5070 office | 601.754.3766 cell



Expect More. Get More.

TomSmithLandandHomes.com

Information is believed to be accurate but not guaranteed.



Directional Map

307 Bunkley Road Meadville, MS 39653

Directions from Hwy 84 West in Meadville, MS: Travel Hwy 84 West. Turn left onto Bunkley Road. Travel 0.4 miles and the property will be on the left, tucked in the back. Look for the Tom Smith Land and Homes sign.



call me today!

NICOLE NEWELL, REALTOR®
Nicole@TomSmithHomes.com
601.990.5070 office | 601.754.3766 cell



Expect More. Get More.

TomSmithLandandHomes.com

Information is believed to be accurate but not guaranteed.