



58+/- Acres with a Unique Home St. Tammany Parish, LA



\$615,000

27411 Frank Gilbert Lane Lacombe, LA 70445

Welcome to this 4,600+/- square foot home situated on 58+/- acres in St. Tammany Parish, LA. This truly unique Lacombe property is located at the dead end of a quiet road. Whether you are an outdoorsman or gamer, this place accommodates both. As you step into the home you will notice two oversized fireplaces that really accentuate the living room and the game room. This home features four bedrooms, two bathrooms and in addition to the completed space, there is also an unfinished second floor offering more than 2,000+/- square feet. Attached to the house is an oversized garage that could double as a shop for the craftsman or handyman. If cooking is more of your hobby the huge pantry will accommodate all of those culinary desires. This property is located on Frank Gilbert Lane, less than five minutes from town and the interstate. Do not miss this opportunity to make this property yours. Call Eli or Preston to schedule an appointment today!

Directions from the Lacombe Exit on I12: Travel north on LA 434 for 0.3 miles and turn left onto Krentel Road. Travel 1.6 miles and turn left onto Fish Hatchery Road. Travel 1.5 miles and turn right onto Frank Gilbert Lane. Travel 0.3 miles and you will see the home straight ahead.



ELI FERGUSON, REALTOR®
Eli@TomSmithLand.com
601.990.5070 office | 601.757.7117 cell



Expect More. Get More.

call us today!



PRESTON SMITH, MANAGING BROKER
Preston@TomSmithLand.com
601.990.5070 office | 601.209.7150 cell



TomSmithLandandHomes.com

Information is believed to be accurate but not guaranteed.





ELI FERGUSON, REALTOR®
Eli@TomSmithLand.com
601.990.5070 office | 601.757.7117 cell



Expect More. Get More.

Call us today!



PRESTON SMITH, MANAGING BROKER
Preston@TomSmithLand.com
601.990.5070 office | 601.209.7150 cell



TomSmithLandandHomes.com

Information is believed to be accurate but not guaranteed.





ELI FERGUSON, REALTOR®
Eli@TomSmithLand.com
601.990.5070 office | 601.757.7117 cell



Expect More. Get More.

Call us today!



PRESTON SMITH, MANAGING BROKER
Preston@TomSmithLand.com
601.990.5070 office | 601.209.7150 cell



TomSmithLandandHomes.com

Information is believed to be accurate but not guaranteed.





ELI FERGUSON, REALTOR®
 Eli@TomSmithLand.com
 601.990.5070 office | 601.757.7117 cell



Expect More. Get More.

Call us today!



PRESTON SMITH, MANAGING BROKER
 Preston@TomSmithLand.com
 601.990.5070 office | 601.209.7150 cell



TomSmithLandandHomes.com

Information is believed to be accurate but not guaranteed.





ELI FERGUSON, REALTOR®
Eli@TomSmithLand.com
601.990.5070 office | 601.757.7117 cell



Expect More. Get More.

Call us today!



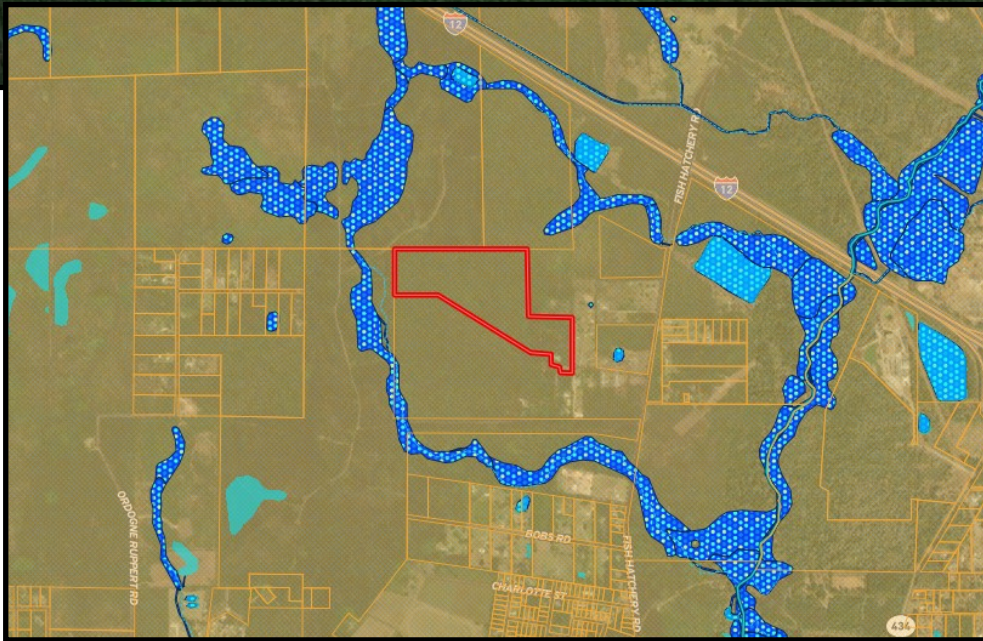
PRESTON SMITH, MANAGING BROKER
Preston@TomSmithLand.com
601.990.5070 office | 601.209.7150 cell



TomSmithLandandHomes.com

Information is believed to be accurate but not guaranteed.





ELI FERGUSON, REALTOR®
Eli@TomSmithLand.com
601.990.5070 office | 601.757.7117 cell



Expect More. Get More.

call us today!



PRESTON SMITH, MANAGING BROKER
Preston@TomSmithLand.com
601.990.5070 office | 601.209.7150 cell

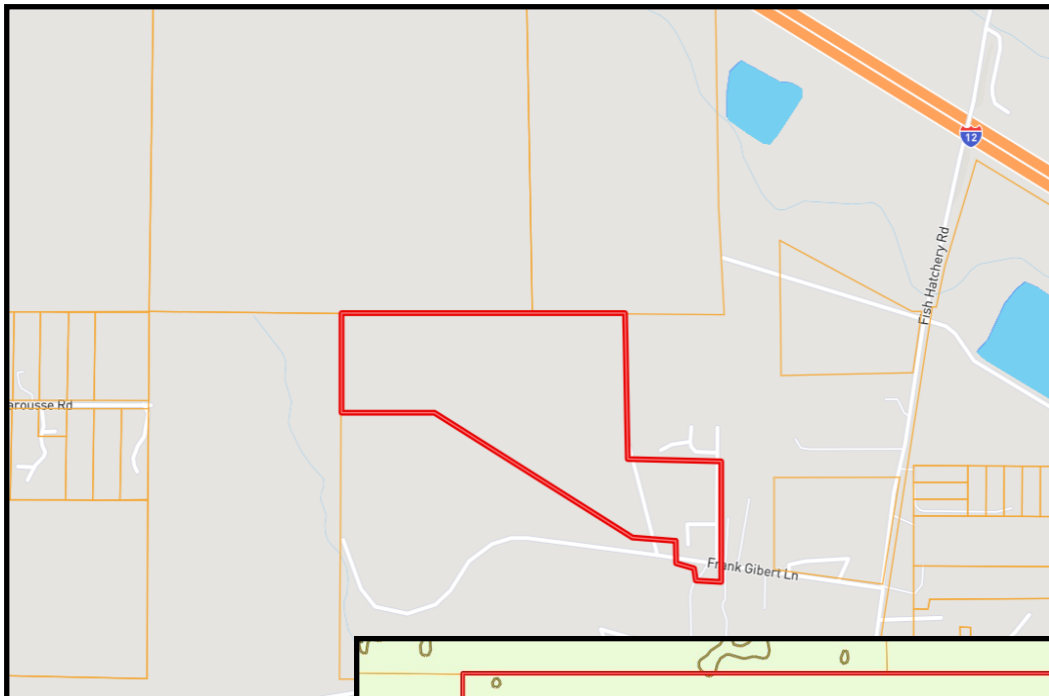


TomSmithLandandHomes.com

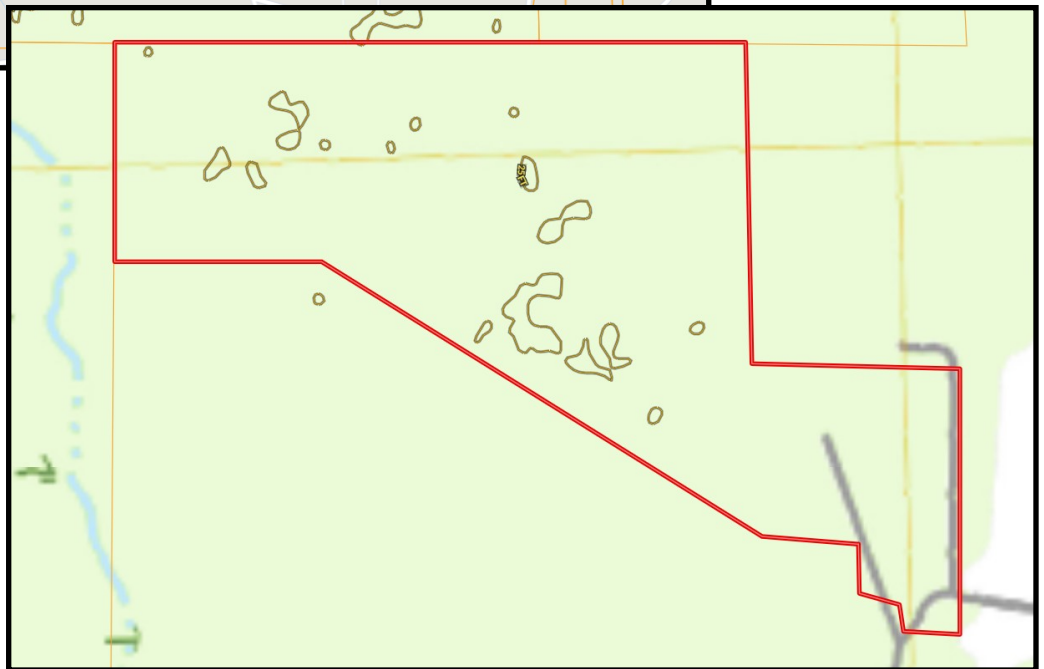
Information is believed to be accurate but not guaranteed.



Ownership Map



Topo Map



ELI FERGUSON, REALTOR®
Eli@TomSmithLand.com
601.990.5070 office | 601.757.7117 cell



Expect More. Get More.

call us today!



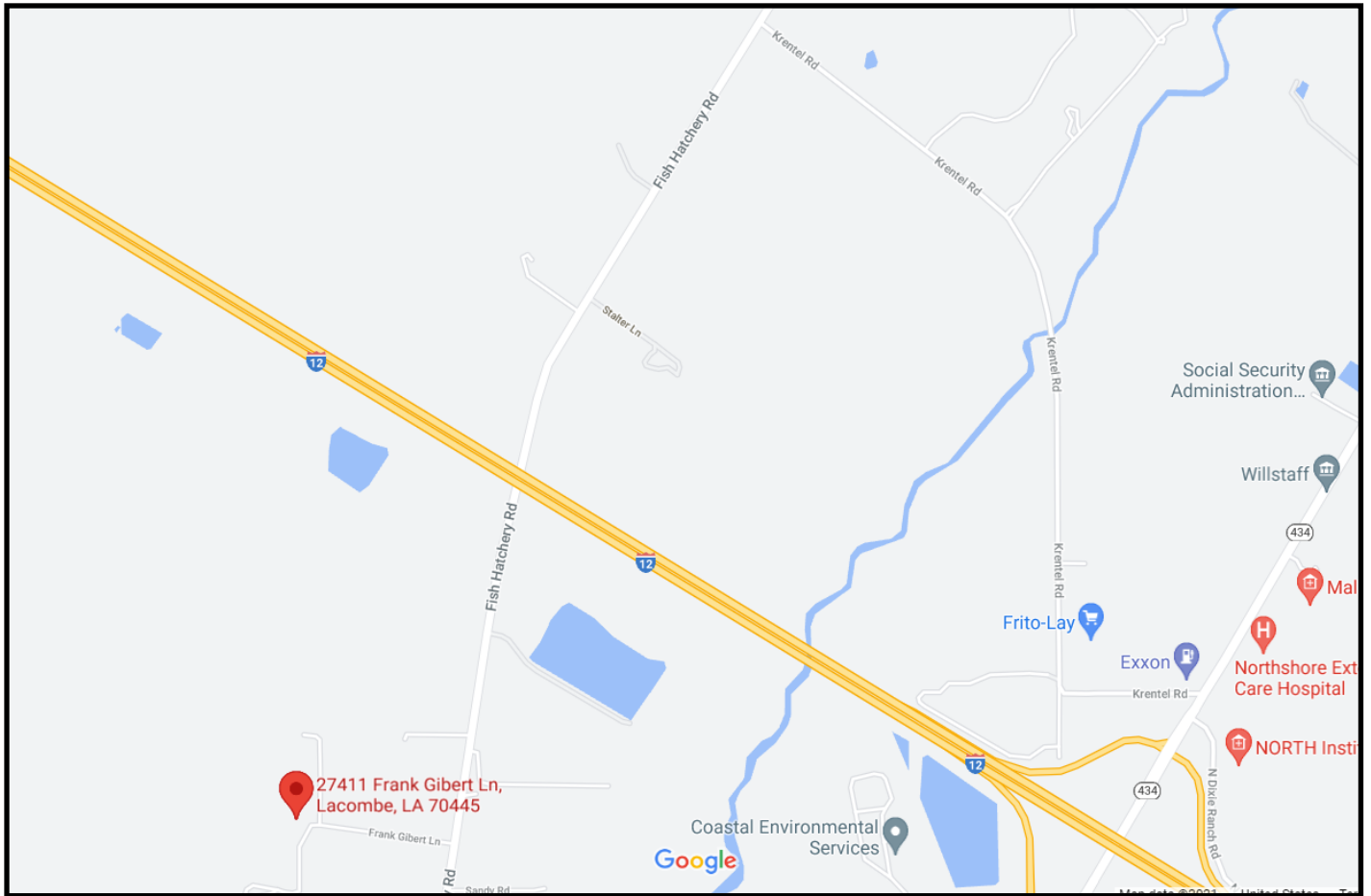
PRESTON SMITH, MANAGING BROKER
Preston@TomSmithLand.com
601.990.5070 office | 601.209.7150 cell



TomSmithLandandHomes.com

Information is believed to be accurate but not guaranteed.





Directional Map

27411 Frank Gilbert Ln Lacombe, LA 70445

Directions from the Lacombe Exit on I12: Travel north on LA 434 for 0.3 miles and turn left onto Krentel Road. Travel 1.6 miles and turn left onto Fish Hatchery Road. Travel 1.5 miles and turn right onto Frank Gilbert Lane. Travel 0.3 miles and you will see the home straight ahead.



ELI FERGUSON, REALTOR®
Eli@TomSmithLand.com
601.990.5070 office | 601.757.7117 cell



call us today!



PRESTON SMITH, MANAGING BROKER
Preston@TomSmithLand.com
601.990.5070 office | 601.209.7150 cell



TomSmithLandandHomes.com

Information is believed to be accurate but not guaranteed.

