



Calling All Investors Commercial Property in Lincoln County, MS



104 Main Street Brookhaven, MS 39601

INVESTORS LOOK NO FURTHER...the possibilities are endless with this Lincoln County, MS commercial property. A 2,648+/- square foot building is situated on a 0.28+/- acre lot on Main Street in Brookhaven. Currently, the building is divided into two apartments, with a tenant on one side. A remodel was started but not completed so let your imagination take over. A new roof was installed in May 2021 and there is parking for about five cars. Call Nicole today to schedule a viewing!

Directions from I-55, Exit 42 North Brookhaven: Travel Dunn Ratcliff 0.2 miles and turn left onto Industrial Park. Drive 1.7 miles and turn left on Georgia Avenue. Travel 0.2 miles and turn right on N Jackson Street. Directly take a left onto W Enterprise Street. In 0.4 miles turn left onto Main Street and the property will be on the right.



13th Report
2011-2020
NATIONAL
BEST
BROKERAGES

call me today!

NICOLE NEWELL, REALTOR®

Nicole@TomSmithHomes.com
601.990.5070 office | 601.754.3766 cell



Expect More. Get More.

TomSmithLandandHomes.com

Information is believed to be accurate but not guaranteed.



Aerial Map



2011-2020
BEST
BROKERAGES

Call me today!

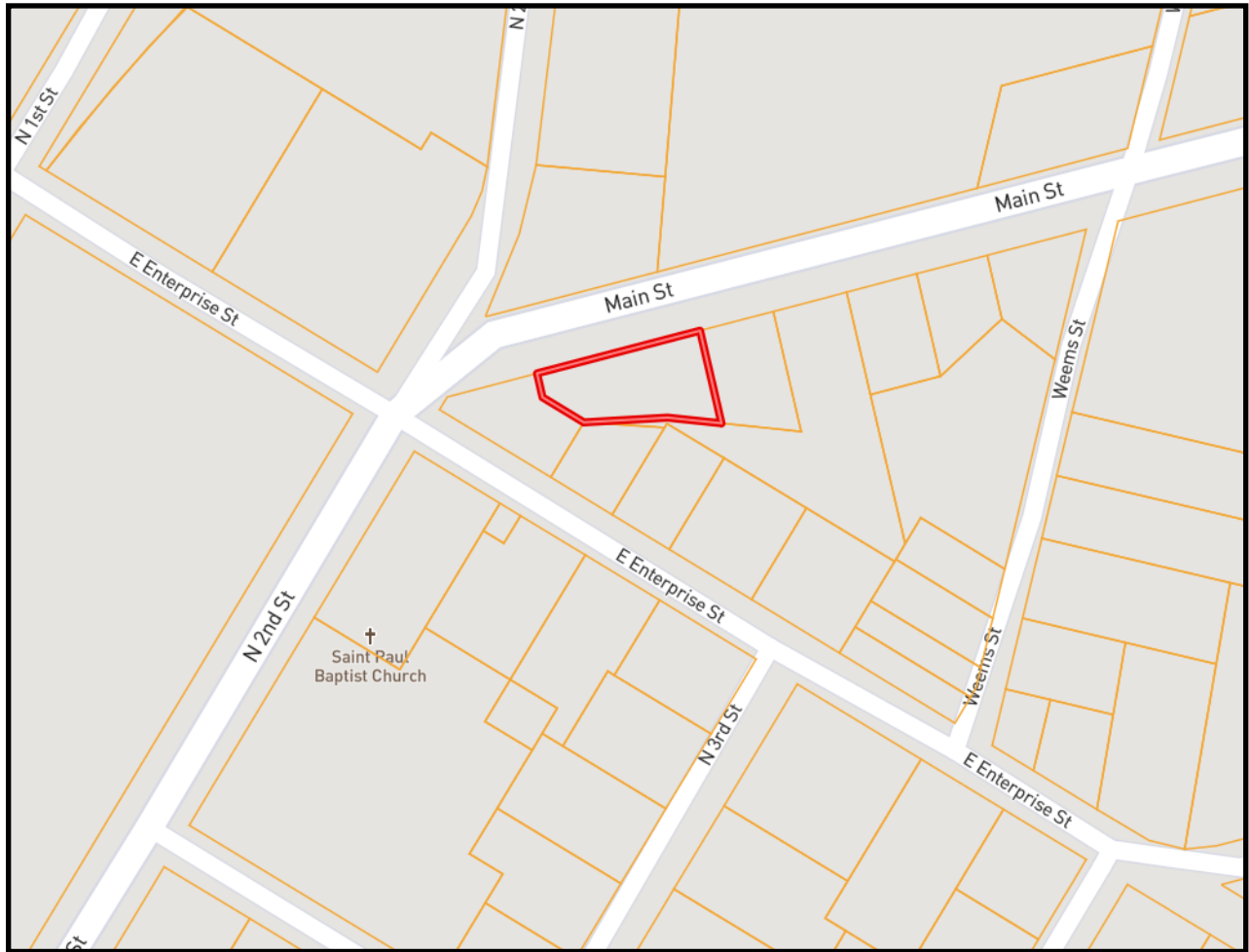
NICOLE NEWELL, REALTOR®
Nicole@TomSmithHomes.com
601.990.5070 office | 601.754.3766 cell



Expect More. Get More.

TomSmithLandandHomes.com

Information is believed to be accurate but not guaranteed.



Ownership Map



2011-2020
BEST
BROKERAGES

call me today!

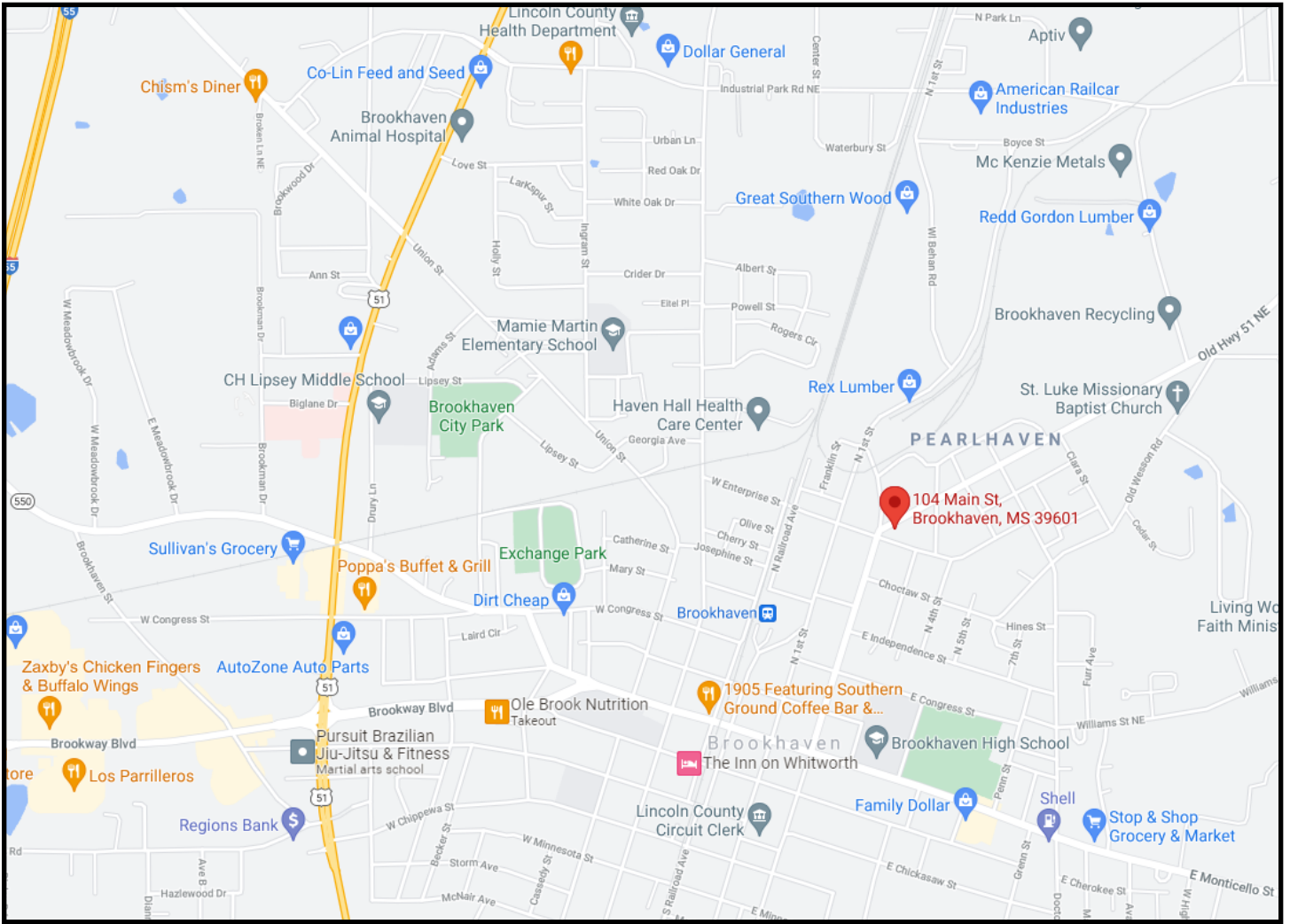
NICOLE NEWELL, REALTOR®
Nicole@TomSmithHomes.com
601.990.5070 office | 601.754.3766 cell



Expect More. Get More.

TomSmithLandandHomes.com

Information is believed to be accurate but not guaranteed.



Directional Map

104 Main Street Brookhaven, MS 39601

Directions from I-55, Exit 42 North Brookhaven: Travel Dunn Ratcliff 0.2 miles and turn left onto Industrial Park. Drive 1.7 miles and turn left on Georgia Avenue. Travel 0.2 miles and turn right on N Jackson Street. Directly take a left onto W Enterprise Street. In 0.4 miles turn left onto Main Street and the property will be on the right.



Call me today!

NICOLE NEWELL, REALTOR®
 Nicole@TomSmithHomes.com
 601.990.5070 office | 601.754.3766 cell



TomSmithLandandHomes.com

Information is believed to be accurate but not guaranteed.