



## Calling All Investors

### Commercial Property in Lincoln County, MS



104 Main Street Brookhaven, MS 39601

INVESTORS LOOK NO FURTHER...the possibilities are endless with this Lincoln County, MS commercial property. A 2,648+/- square foot building is situated on a 0.28+/- acre lot on Main Street in Brookhaven. Currently, the building is divided into two apartments, with a tenant on one side. A remodel was started but not completed so let your imagination take over. A new roof was installed in May 2021 and there is parking for about five cars. Call Nicole today to schedule a viewing!

Directions from I-55, Exit 42 North Brookhaven: Travel Dunn Ratcliff 0.2 miles and turn left onto Industrial Park. Drive 1.7 miles and turn left on Georgia Avenue. Travel 0.2 miles and turn right on N Jackson Street. Directly take a left onto W Enterprise Street. In 0.4 miles turn left onto Main Street and the property will be on the right.



1234Report  
2011-2020  
BEST  
BROKERAGES

*call me today!*

**NICOLE NEWELL**, REALTOR®

Nicole@TomSmithHomes.com  
601.990.5070 office | 601.754.3766 cell



Expect More. Get More.

**TomSmithLandandHomes.com**

Information is believed to be accurate but not guaranteed.



## Aerial Map



2011-2020  
BEST  
BROKERAGES

*Call me today!*

**NICOLE NEWELL**, REALTOR®  
Nicole@TomSmithHomes.com  
601.990.5070 office | 601.754.3766 cell

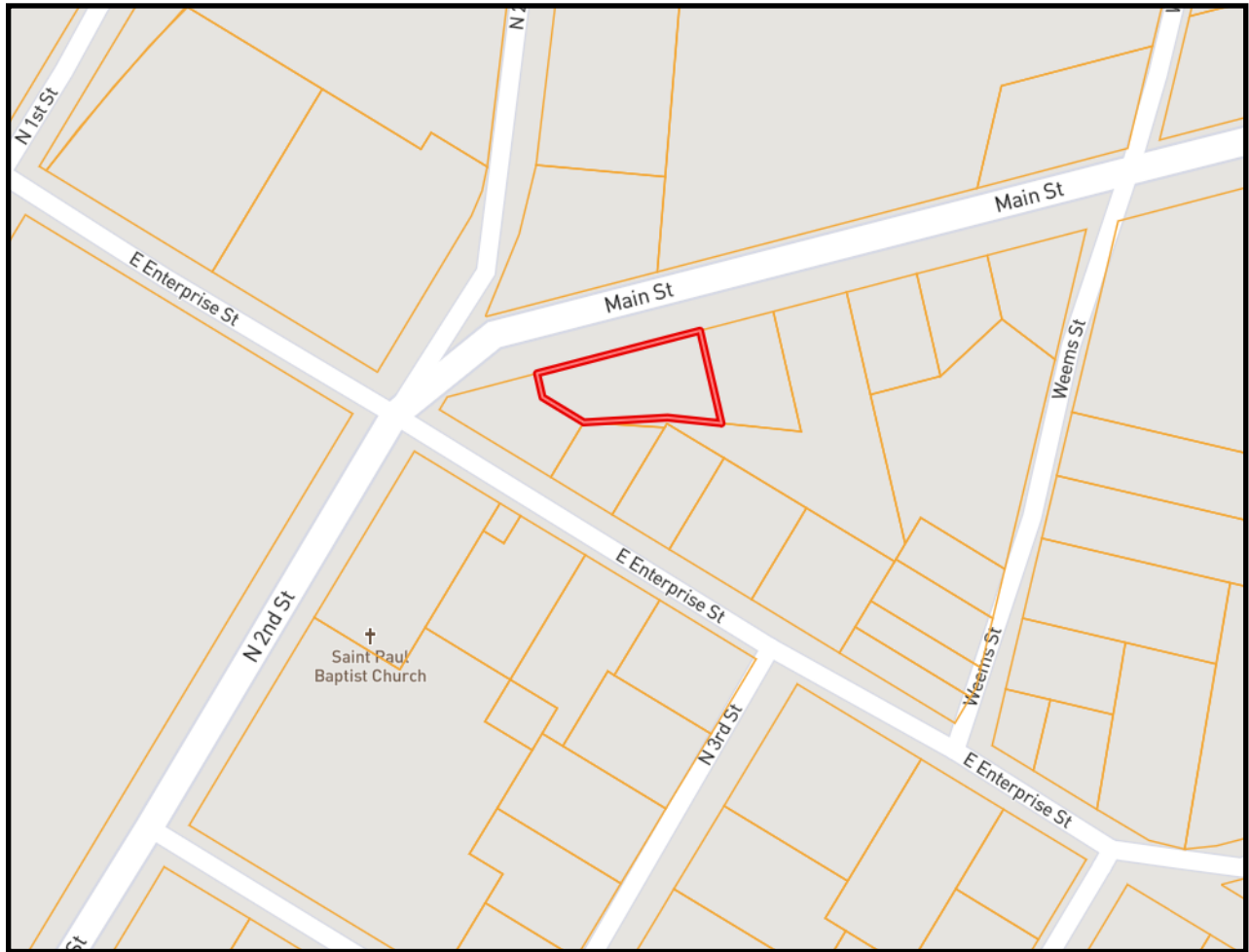


Expect More. Get More.

**TomSmithLandandHomes.com**

Information is believed to be accurate but not guaranteed.





## Ownership Map



2011-2020  
BEST  
BROKERAGES

*call me today!*

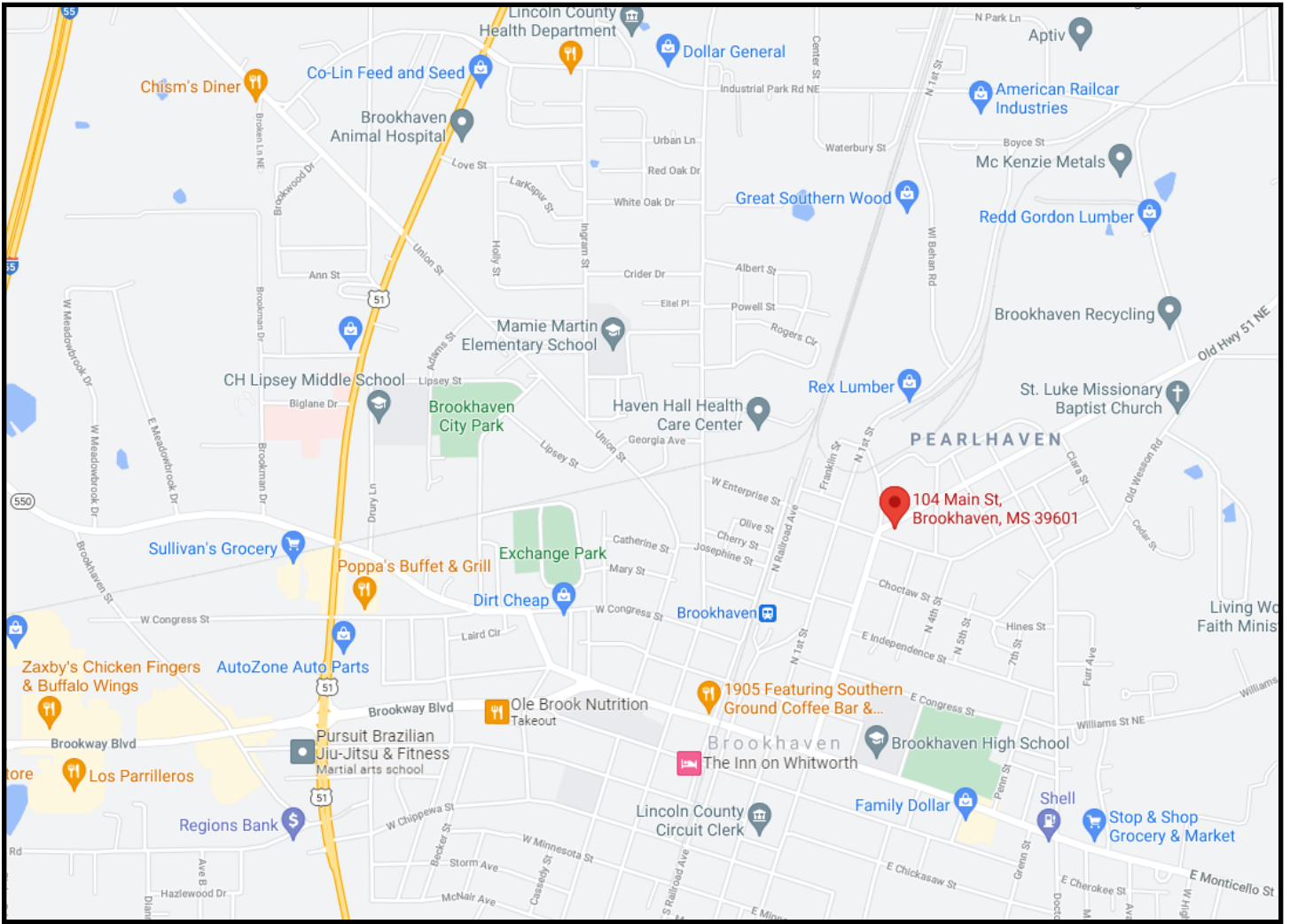
**NICOLE NEWELL**, REALTOR®  
Nicole@TomSmithHomes.com  
601.990.5070 office | 601.754.3766 cell



Expect More. Get More.

[TomSmithLandandHomes.com](http://TomSmithLandandHomes.com)

Information is believed to be accurate but not guaranteed.



## Directional Map

104 Main Street Brookhaven, MS 39601

**Directions from I-55, Exit 42 North Brookhaven:** Travel Dunn Ratcliff 0.2 miles and turn left onto Industrial Park. Drive 1.7 miles and turn left on Georgia Avenue. Travel 0.2 miles and turn right on N Jackson Street. Directly take a left onto W Enterprise Street. In 0.4 miles turn left onto Main Street and the property will be on the right.



*call me today!*

**NICOLE NEWELL**, REALTOR®  
 Nicole@TomSmithHomes.com  
 601.990.5070 office | 601.754.3766 cell



**TomSmithLandandHomes.com**

Information is believed to be accurate but not guaranteed.