



20.91+/- Acres With Endless Possibilities Lincoln County, MS



\$124,500

Check out this 20.9+/- acre tract of mixed hardwoods and timber located on Chicken Farm Road in Lincoln County, MS. This would make a great recreational tract or home site. The seller is willing to subdivide into two 10+/- acre tracts. The possibilities are endless! This tract is in the Brookhaven School District and minutes from Brookhaven and Interstate 55. Deed restrictions include no mobile homes older than five years from the purchase date of the land and no more than one mobile home per 10+/- acre tract.

Call Sabrina today to schedule a viewing!

Directions from Hwy 84 in Brookhaven, MS: Travel east towards Monticello. Turn left onto Pleasant Grove Drive SE. At the Y stay to the right. The property is on the corner of Pleasant Grove Drive and Chicken Farm Road.



2011-2020
NATIONAL
BEST
BROKERAGES

call me today!

SABRINA WOLFE, REALTOR®
Sabrina@TomSmithHomes.com
601.990.5070 office | 601.754.3763 cell



Expect More. Get More.

TomSmithLandandHomes.com

Information is believed to be accurate but not guaranteed.



call me today!

SABRINA WOLFF, REALTOR®
Sabrina@TomSmithHomes.com
601.990.5070 office | 601.754.3763 cell



TomSmithLandandHomes.com

Information is believed to be accurate but not guaranteed.



Aerial Map



call me today!

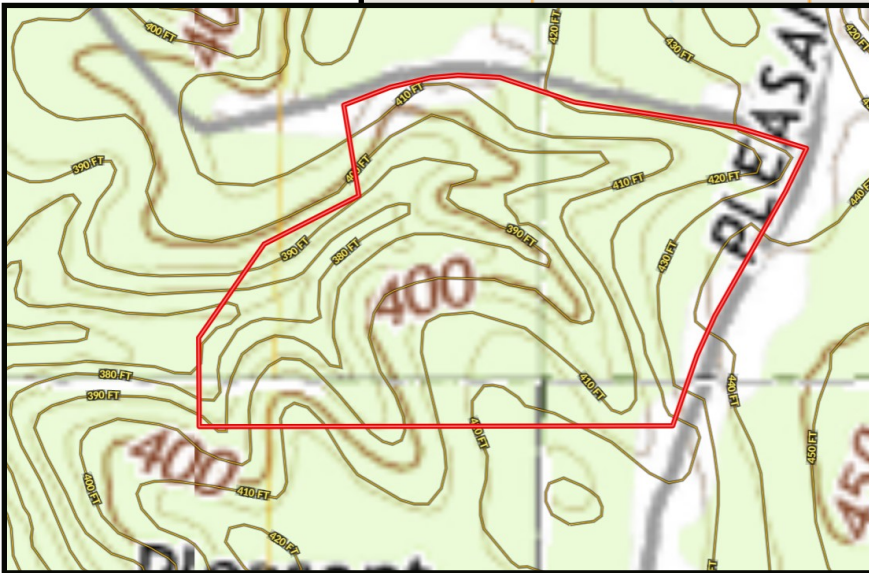
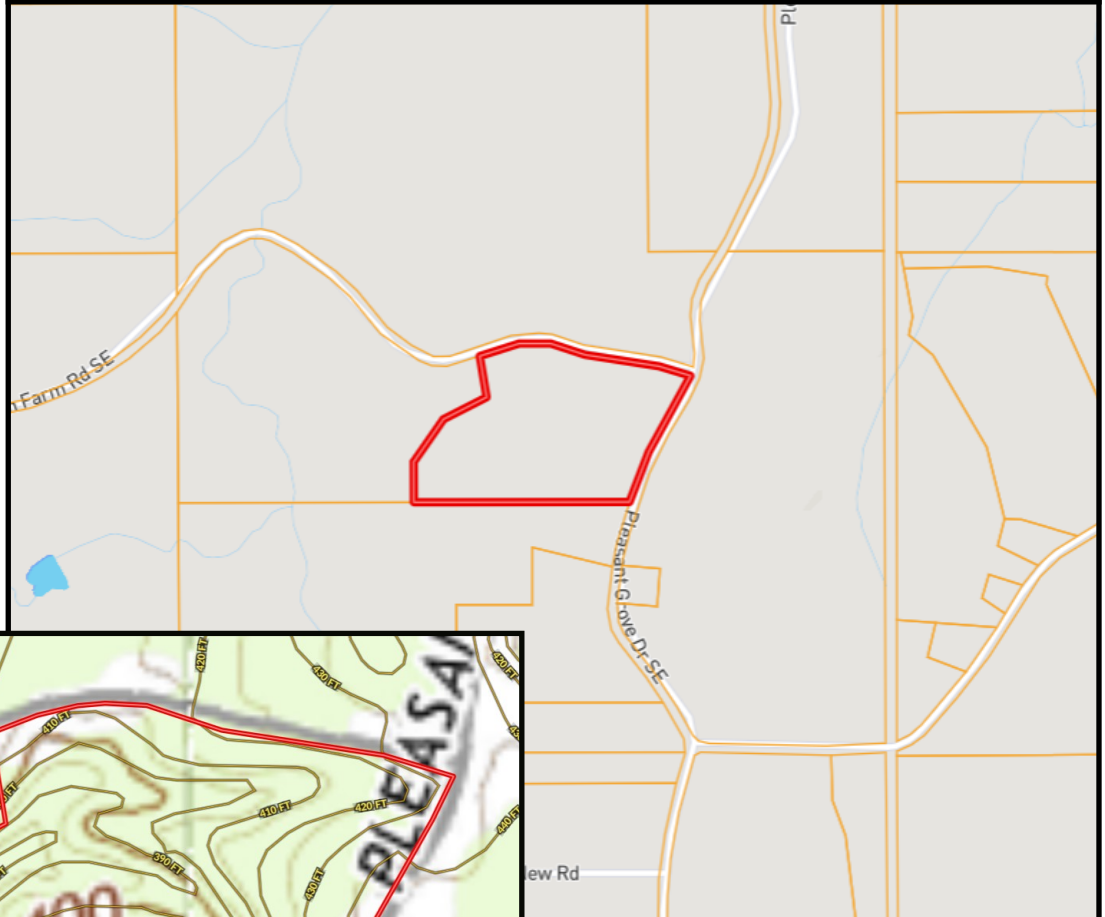
SABRINA WOLFF, REALTOR®
Sabrina@TomSmithHomes.com
601.990.5070 office | 601.754.3763 cell



TomSmithLandandHomes.com

Information is believed to be accurate but not guaranteed.

Ownership Map



Topo Map



2011-2020
BEST
BROKERAGES

Call me today!

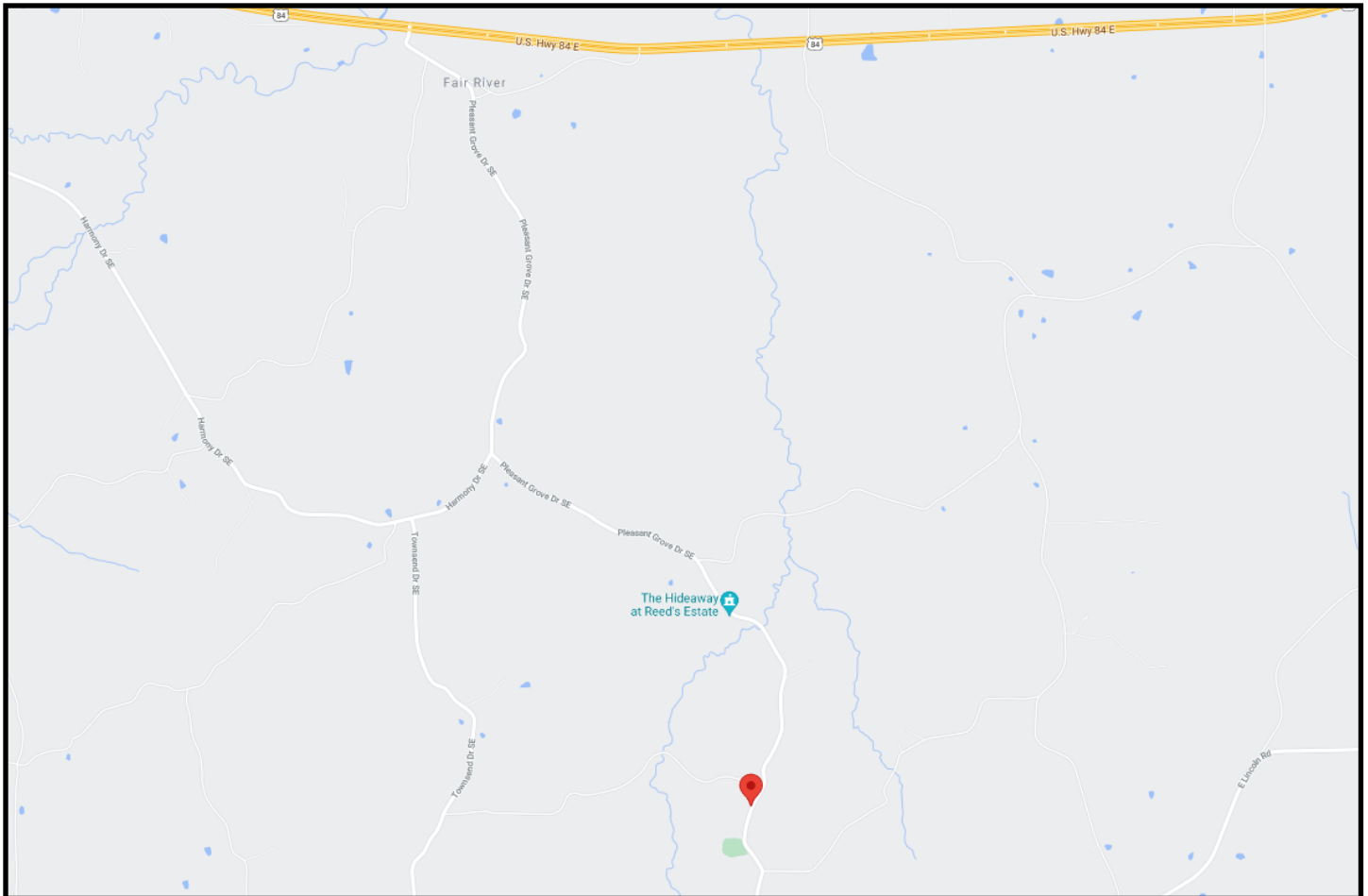
SABRINA WOLFF, REALTOR®
Sabrina@TomSmithHomes.com
601.990.5070 office | 601.754.3763 cell



Expect More. Get More.

TomSmithLandandHomes.com

Information is believed to be accurate but not guaranteed.



Directional Map

Directions from Hwy 84 in Brookhaven, MS: Travel east towards Monticello. Turn left onto Pleasant Grove Drive SE. At the Y stay to the right. The property is on the corner of Pleasant Grove Drive and Chicken Farm Road.



call me today!

SABRINA WOLFF, REALTOR®
Sabrina@TomSmithHomes.com
601.990.5070 office | 601.754.3763 cell



Expect More. Get More.

TomSmithLandandHomes.com

Information is believed to be accurate but not guaranteed.