



14+/- Acres of Vacant Level Land Lincoln County, MS



\$280,000

Check out this 14+/- acres of vacant, level land for sale just outside the city limits of Brookhaven, MS. This Lincoln County property has been used for commercial use in the past to park equipment on and has a deeded access through Kumar's grocery. Although this property does not have frontage on Hwy 84 it's very visible and provides much opportunity. The seller may consider subdividing. Contact an agent to view this property as there is an operational business on site and a notice is required prior to showing. Call Sabrina today!

Directions from Hwy 51 S in Brookhaven, MS: Travel east on Hwy 84. Just through the red light at the intersection of Hwy 84 and East Lincoln Road, you'll see the property on the right.



2011-2020
NATIONAL
BEST
BROKERAGES

call me today!

SABRINA WOLFE, REALTOR®
Sabrina@TomSmithHomes.com
601.990.5070 office | 601.754.3763 cell



TomSmithLandandHomes.com

Information is believed to be accurate but not guaranteed.



call me today!

SABRINA WOLFF, REALTOR®
Sabrina@TomSmithHomes.com
601.990.5070 office | 601.754.3763 cell



TomSmithLandandHomes.com

Information is believed to be accurate but not guaranteed.

Aerial Map



Flood Map



call me today!

SABRINA WOLFF, REALTOR®

Sabrina@TomSmithHomes.com

601.990.5070 office | 601.754.3763 cell

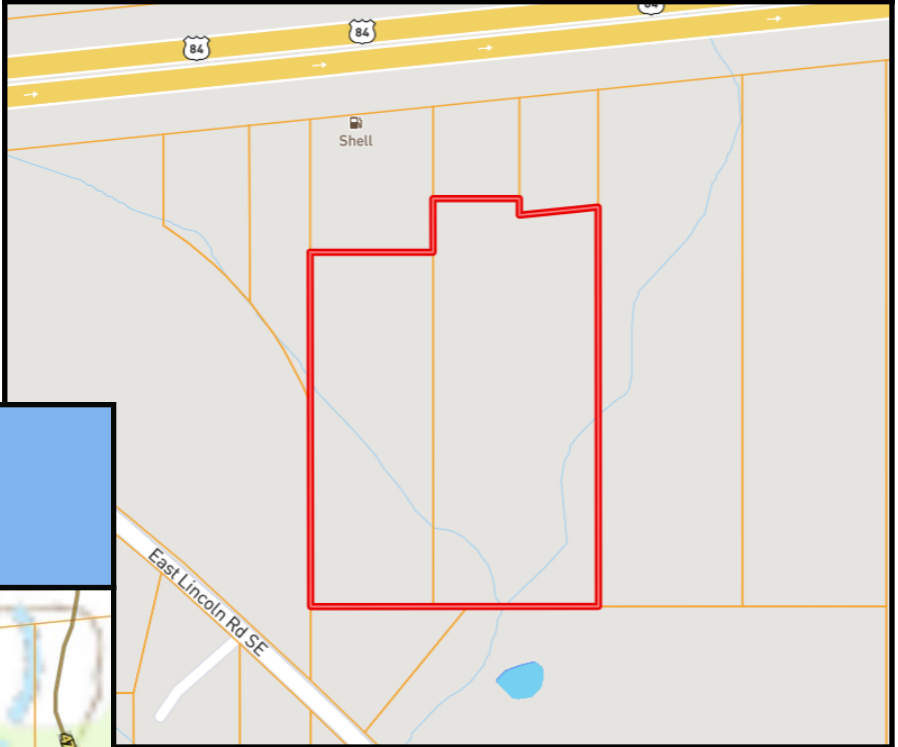


Expect More. Get More.

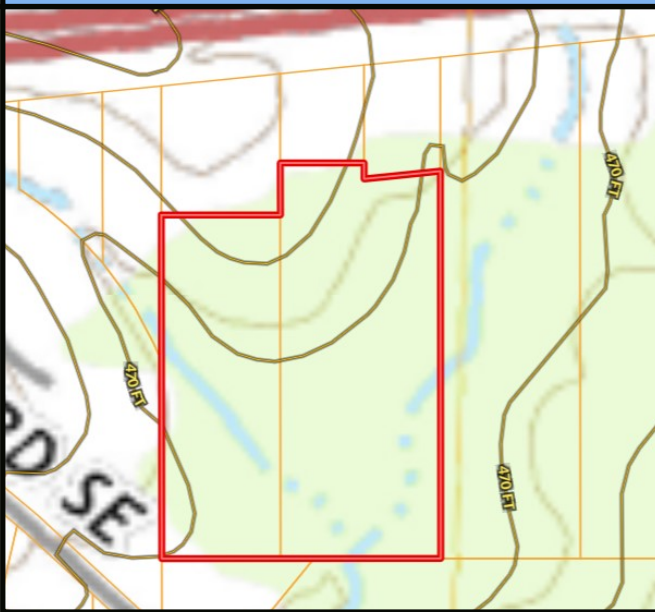
TomSmithLandandHomes.com

Information is believed to be accurate but not guaranteed.

Ownership Map



Topo Map



2011-2020
BEST
BROKERAGES

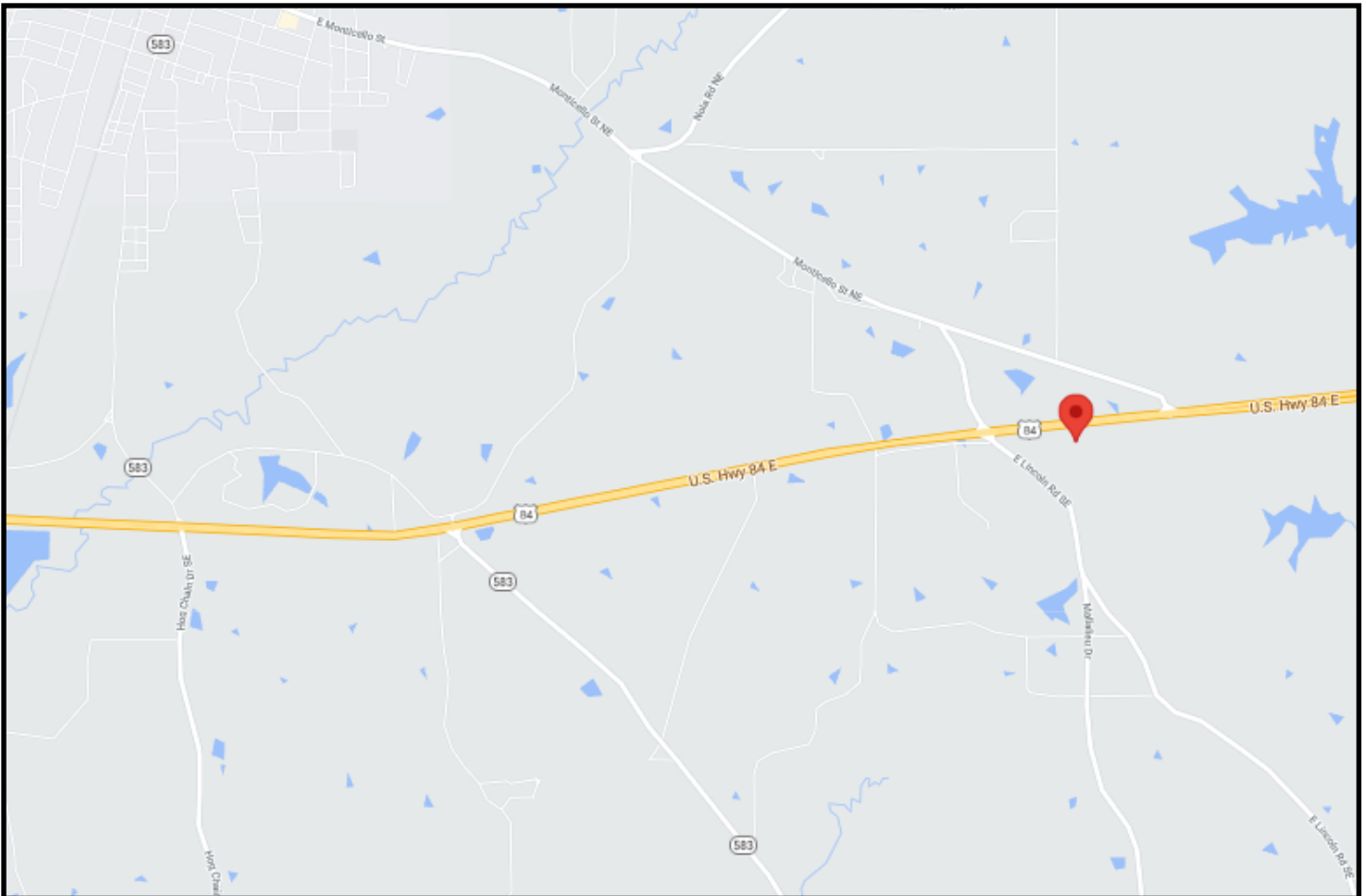
call me today!

SABRINA WOLFF, REALTOR®
Sabrina@TomSmithHomes.com
601.990.5070 office | 601.754.3763 cell



TomSmithLandandHomes.com

Information is believed to be accurate but not guaranteed.



Directional Map

Directions from Hwy 51 S in Brookhaven, MS: Travel east on Hwy 84. Just through the red light at the intersection of Hwy 84 and East Lincoln Road, you'll see the property on the right.



call me today!

SABRINA WOLFF, REALTOR®
Sabrina@TomSmithHomes.com
601.990.5070 office | 601.754.3763 cell



Expect More. Get More.

TomSmithLandandHomes.com

Information is believed to be accurate but not guaranteed.