

# Home on 2+/- Acres Near MSU Oktibbeha County, MS

53 Park Lane Starkville, MS  
39759



\$275,000

INVESTORS...JUMP ON THIS OPPORTUNITY! If you are looking for an income producing property, take a peek at this two bedroom, three bath home in Oktibbeha County, MS. Situated on a large 2+/- acre corner lot off Blackjack Road, this property is approximately 1.3 miles from Mississippi State University. The kitchen and living room were recently remodeled, along with an HVAC update. This would be a perfect rental for students. The large lot offers ample space for an additional structure. For more information, or to schedule a private showing, call Harper Day today!

**Directions from the Intersection of Blackjack Road and Oktoc Road in Starkville:** At the traffic circle, continue straight to stay onto Blackjack Road for 1.3 miles. Turn right onto Park Lane. The property (53 Park Lane) will be on your left. [CLICK FOR INTERACTIVE MAP](#)



*Call me today!*

**HARPER DAY**, REALTOR®  
Harper@TomSmithLand.com  
662.268.6333 office | 662.694.9751 cell



**TomSmithLandandHomes.com**

Information is believed to be accurate but not guaranteed.





*Call me today!*

LandExpert  
2011-2020  
AMERICAN  
BEST  
BROKERAGES

**HARPER DAY**, REALTOR®  
Harper@TomSmithLand.com  
662.268.6333 office | 662.694.9751 cell

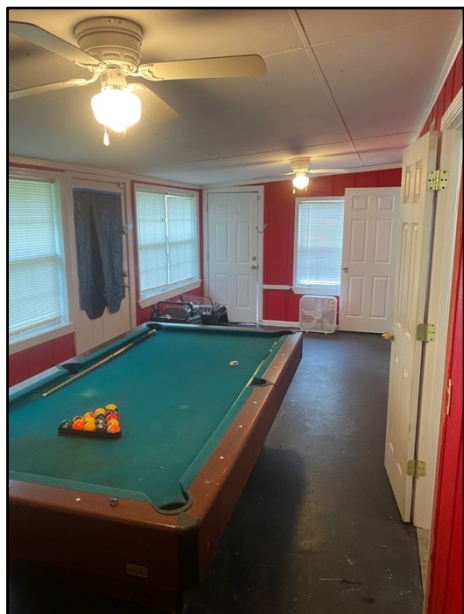


Expect More. Get More.

**TomSmithLandandHomes.com**

Information is believed to be accurate but not guaranteed.





*Call me today!*

**HARPER DAY**, REALTOR®  
Harper@TomSmithLand.com  
662.268.6333 office | 662.694.9751 cell



**TomSmithLandandHomes.com**

Information is believed to be accurate but not guaranteed.



# Aerial Map



*Call me today!*

**HARPER DAY**, REALTOR®  
Harper@TomSmithLand.com  
662.268.6333 office | 662.694.9751 cell



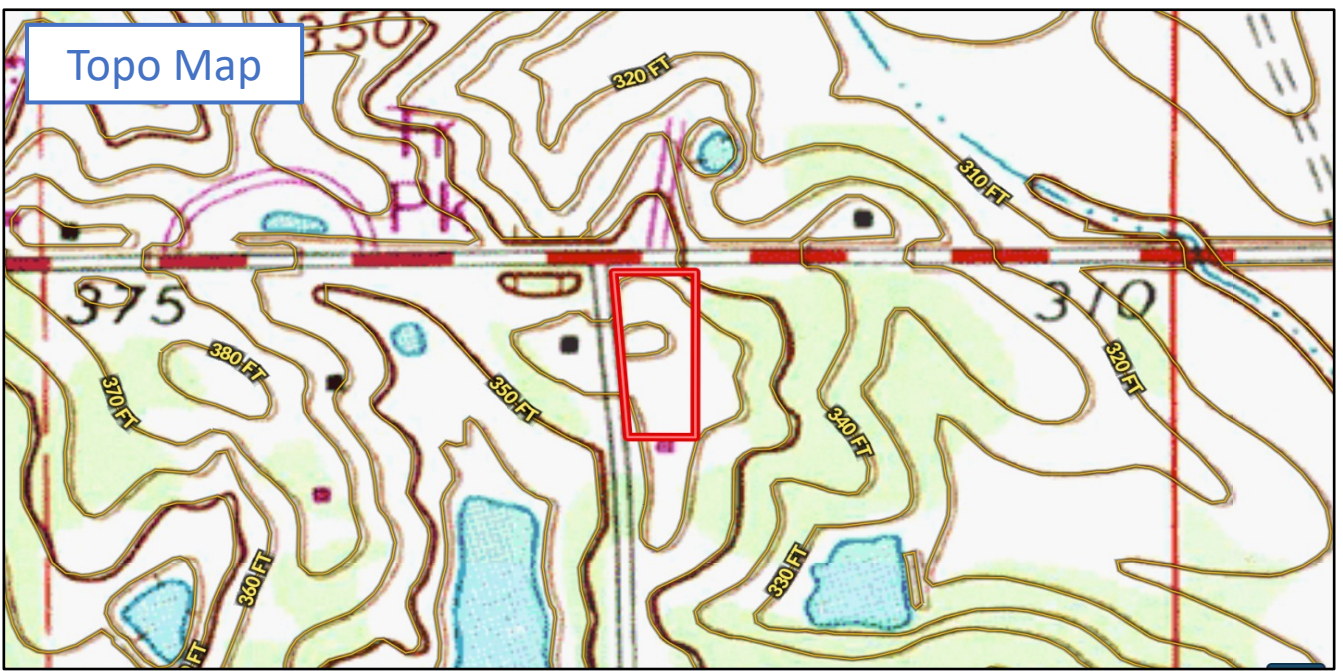
Expect More. Get More.

**TomSmithLandandHomes.com**

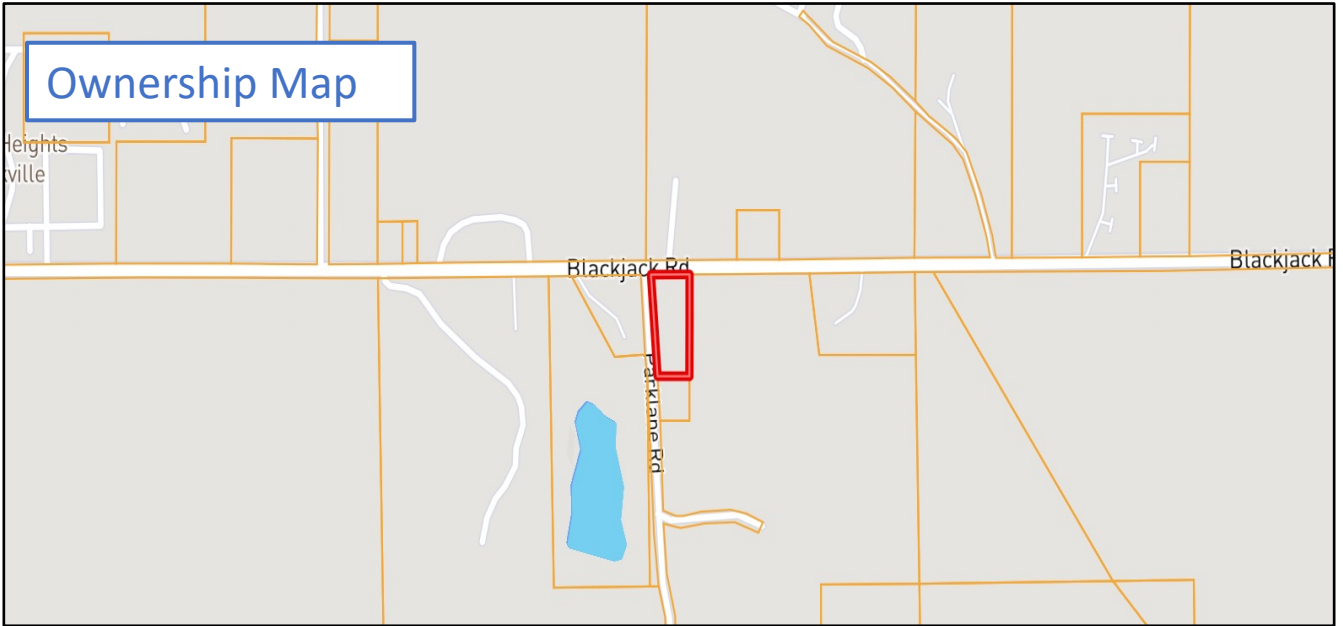
Information is believed to be accurate but not guaranteed.



Topo Map



Ownership Map



*Call me today!*

**HARPER DAY**, REALTOR®  
 Harper@TomSmithLand.com  
 662.268.6333 office | 662.694.9751 cell



Expect More. Get More.

2011-2020  
 AMERICAN  
**BEST**  
 BROKERAGES

**TomSmithLandandHomes.com**

Information is believed to be accurate but not guaranteed.



# FEMA Flood and Water Feature Map



*Call me today!*

**HARPER DAY**, REALTOR®  
Harper@TomSmithLand.com  
662.268.6333 office | 662.694.9751 cell



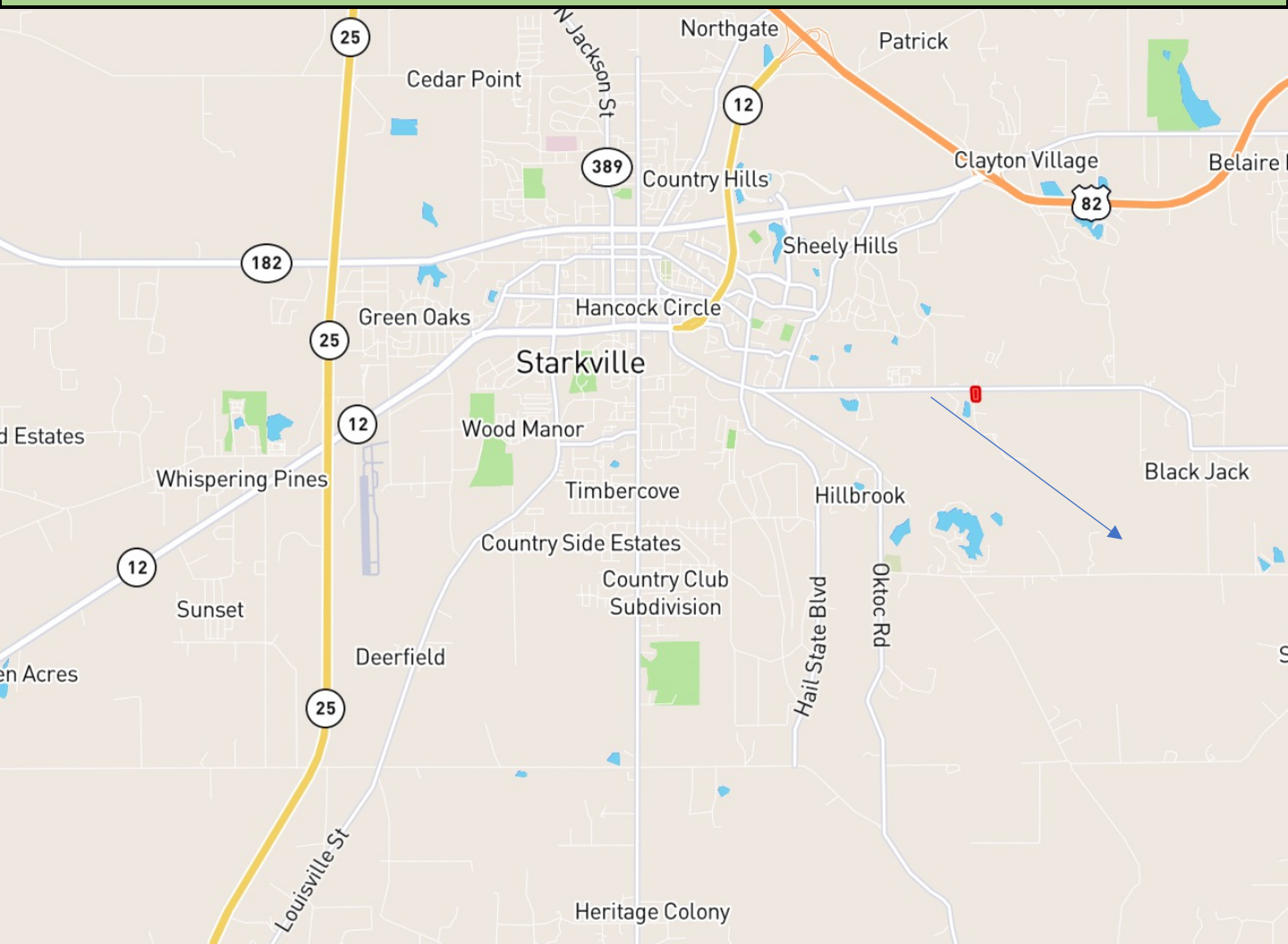
2011-2020  
AMERICAN  
**BEST**  
BROKERAGES

**TomSmithLandandHomes.com**

Information is believed to be accurate but not guaranteed.



# Directional Map



**Directions from the Intersection of Blackjack Road and Oktoc Road in Starkville:** At the traffic circle, continue straight to stay onto Blackjack Road for 1.3 miles. Turn right onto Park Lane. The property (53 Park Lane) will be on your left. [CLICK FOR INTERACTIVE MAP](#)

*Call me today!*

**HARPER DAY**, REALTOR®  
Harper@TomSmithLand.com  
662.268.6333 office | 662.694.9751 cell



Expect More. Get More.

2011-2020  
AMERICAN  
**BEST**  
BROKERAGES

**TomSmithLandandHomes.com**

Information is believed to be accurate but not guaranteed.