



Small Town Southern Charm

23003 Hwy 18, Raymond, MS 39154
Hinds County



Are you looking for a home with acreage? Take a look at this charming home situated on 2+/- acres in West Hinds County, MS. This 1940's traditional brick home features original hardwood floors, three bedrooms, two baths and a front porch perfect for rocking chairs. Enter through the formal living room that has a gas fireplace for warm family nights. The formal dining room and eat in kitchen are to the left and lead to a laundry room, spacious enough for that extra refrigerator or freezer. On the back of the house you will find a second den/living area for casual days or entertaining. The property offers road frontage on Highway 18 with additional acreage available. A NEW ROOF was just installed in August 2021. Home is sold "AS IS". To schedule a private showing, contact Ellen Smith or Robin Adams!

DIRECTIONS FROM JACKSON: Take Exit 40 A to Highway 18 South from I-20. Travel 19 miles. Property is on the left immediately before Broadwater Road.



call me today!

ROBIN ADAMS, REALTOR®
Robin@TomSmithLand.com

601.898.2772 office | 601.502.3877 cell



Expect More. Get More.



TomSmithLandandHomes.com

Information is believed to be accurate but not guaranteed.



ROBIN ADAMS, REALTOR®
Robin@TomSmithLand.com
601.898.2772 office | 601.502.3877 cell



Expect More. Get More.

TomSmithLandandHomes.com

Information is believed to be accurate but not guaranteed.



ROBIN ADAMS, REALTOR®
Robin@TomSmithLand.com
601.898.2772 office | 601.502.3877 cell



TomSmithLandandHomes.com

Information is believed to be accurate but not guaranteed.



ROBIN ADAMS, REALTOR®
Robin@TomSmithLand.com
601.898.2772 office | 601.502.3877 cell

Tom Smith
LAND AND HOMES
Expect More. Get More.

TomSmithLandandHomes.com

Information is believed to be accurate but not guaranteed.



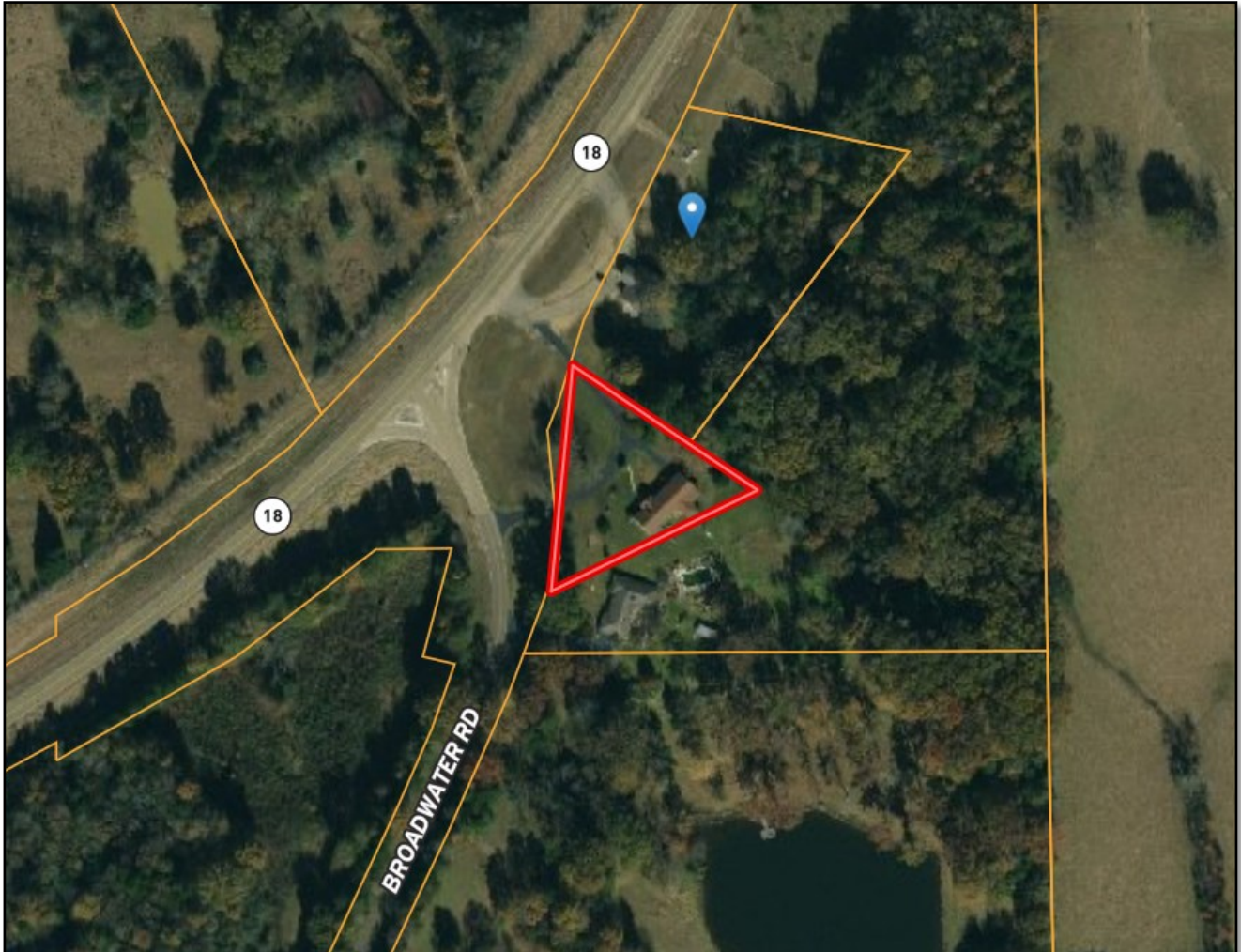
ROBIN ADAMS, REALTOR®
 Robin@TomSmithLand.com
 601.898.2772 office | 601.502.3877 cell

Expect More. Get More.

TomSmithLandandHomes.com

Information is believed to be accurate but not guaranteed.

AERIAL MAP



Click [HERE](#) for an Interactive Map

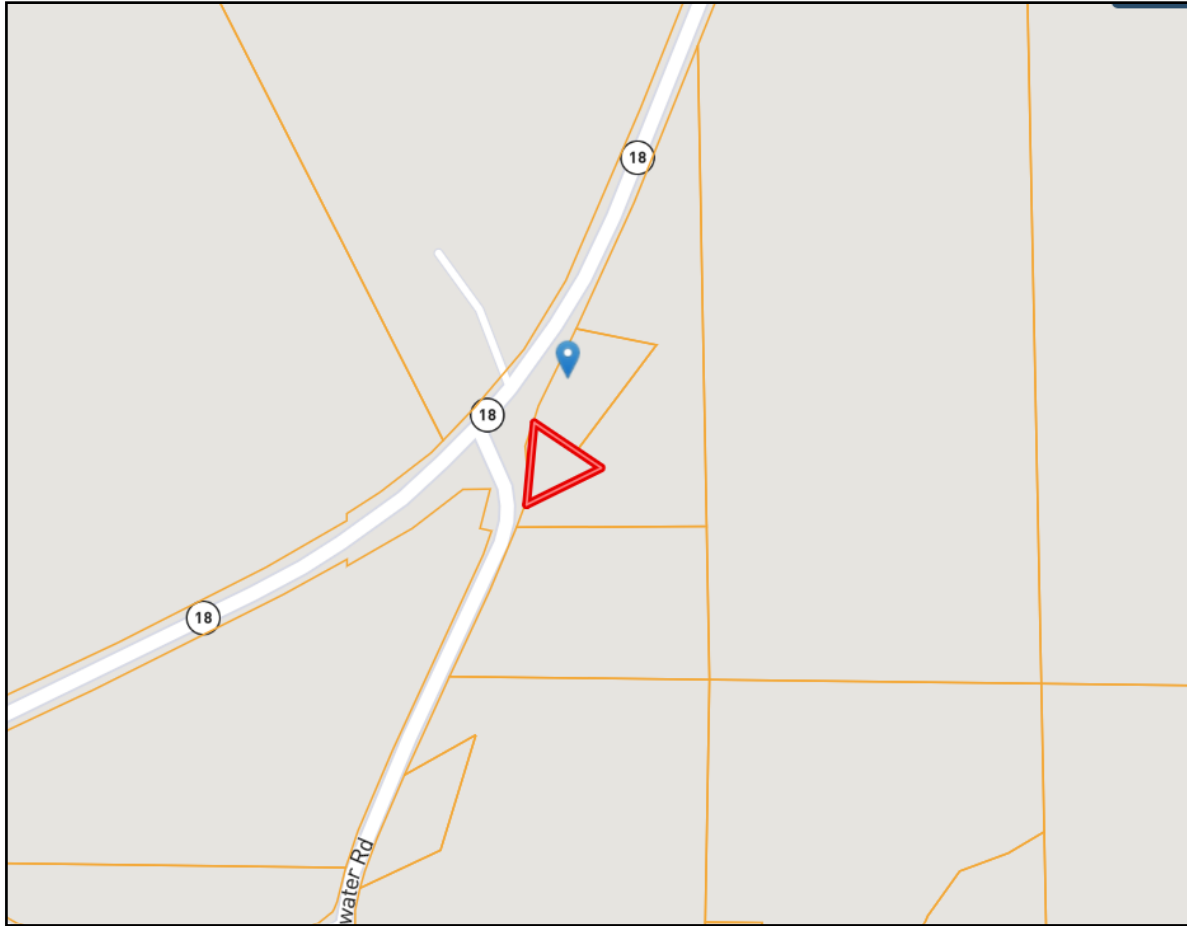


ROBIN ADAMS, REALTOR®
Robin@TomSmithLand.com
601.898.2772 office | 601.502.3877 cell



TomSmithLandandHomes.com

Information is believed to be accurate but not guaranteed.



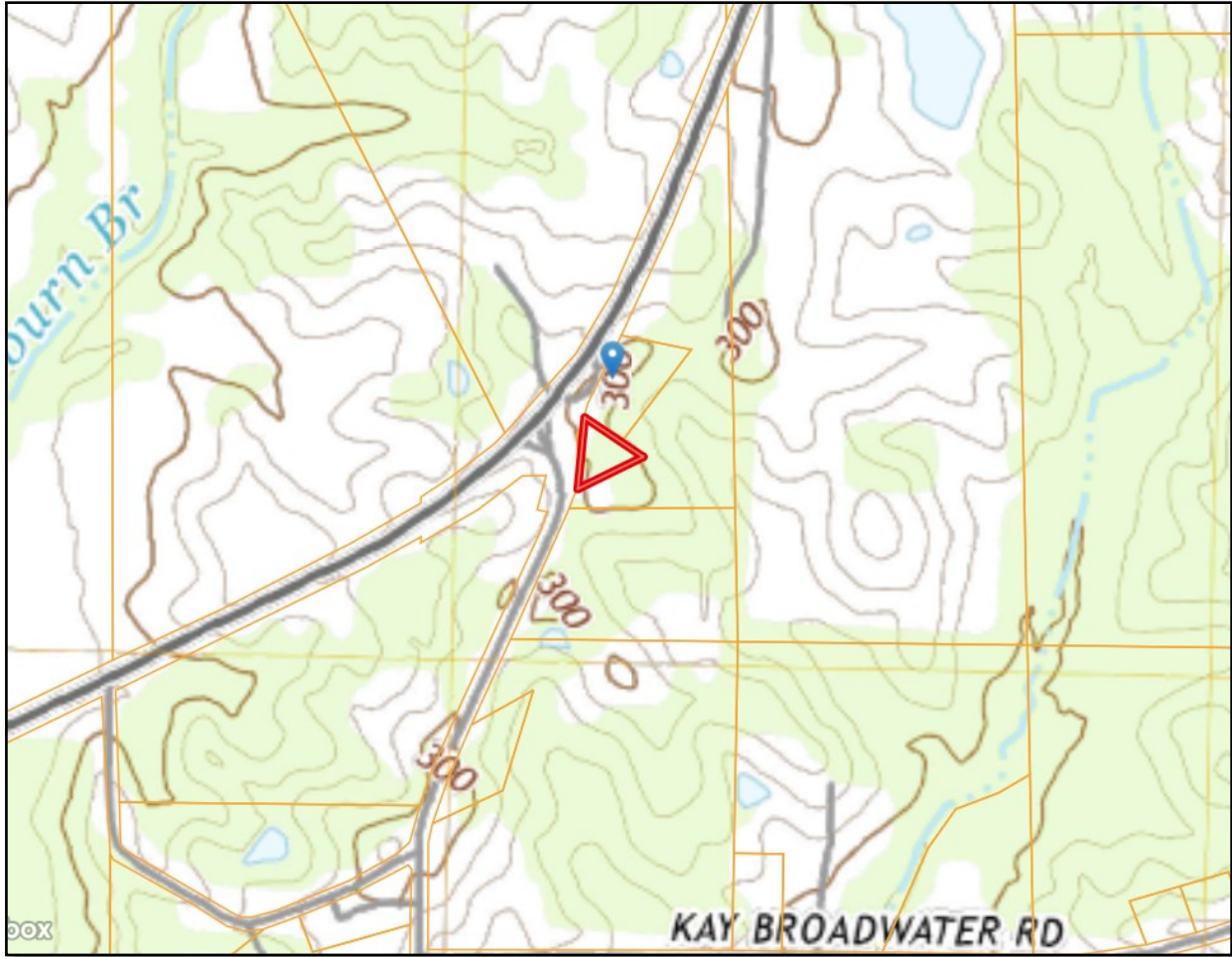
OWNERSHIP MAP

ROBIN ADAMS, REALTOR®
Robin@TomSmithLand.com
601.898.2772 office | 601.502.3877 cell



TomSmithLandandHomes.com

Information is believed to be accurate but not guaranteed.



TOPO MAP

ROBIN ADAMS, REALTOR®
Robin@TomSmithLand.com
601.898.2772 office | 601.502.3877 cell



TomSmithLandandHomes.com

Information is believed to be accurate but not guaranteed.

DIRECTIONAL MAP



DIRECTIONS FROM JACKSON: Take Highway 18 South From I20. Travel 19 miles Property is on the left immediately before Broadwater Road.

23003 HIGHWAY 18, RAYMOND MS 39154



call me today!

ROBIN ADAMS, REALTOR®

Robin@TomSmithLand.com

601.898.2772 office | 601.502.3877 cell



Expect More. Get More.

TomSmithLandandHomes.com

Information is believed to be accurate but not guaranteed.