



2.35+/- Acre Homesite Jones County, MS



\$22,500

Check out this 2.35+/- acre parcel located in the South Jones School District in Jones County, MS. This tract has road frontage on Hwy 590 and Earl Brashier Road in Seminary approximately 30 minutes from Hattiesburg and 10 minutes from Interstate 59. The property features multiple homesites, pine timber, scattered hardwoods, power on site, and community water is available. If you're looking for a spot to build or a place for your mobile home, in a good school district with a short drive from Hattiesburg, this tract may be the one. Call Blake today to schedule a viewing!

Directions from Exit 85 at Interstate 59 in Hattiesburg, MS: Travel southwest on MS-590 W for 10.7 miles. The destination will be on the right.



Call me today!

BLAKE SASSER, REALTOR®
Blake@TomSmithLand.com
601.990.5070 office | 601-757-5027 cell



TomSmithLandandHomes.com

Information is believed to be accurate but not guaranteed.



BLAKE SASSER, REALTOR®
Blake@TomSmithLand.com
601.990.5070 office | 601-757-5027 cell

Expect More. Get More.

TomSmithLandandHomes.com

Information is believed to be accurate but not guaranteed.



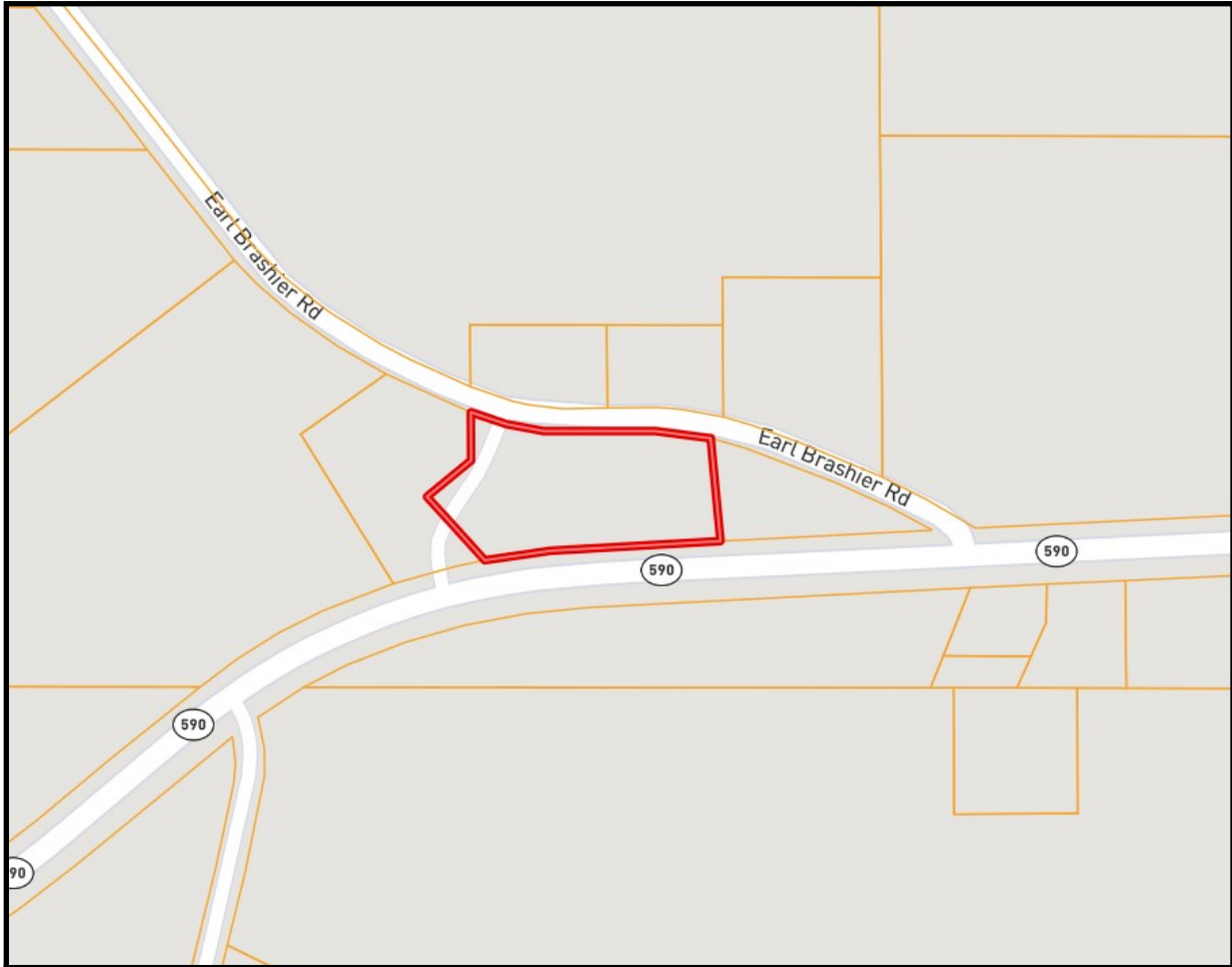
Aerial Map



BLAKE SASSER, REALTOR®
Blake@TomSmithLand.com
601.990.5070 office | 601-757-5027 cell

TomSmithLandandHomes.com

Information is believed to be accurate but not guaranteed.



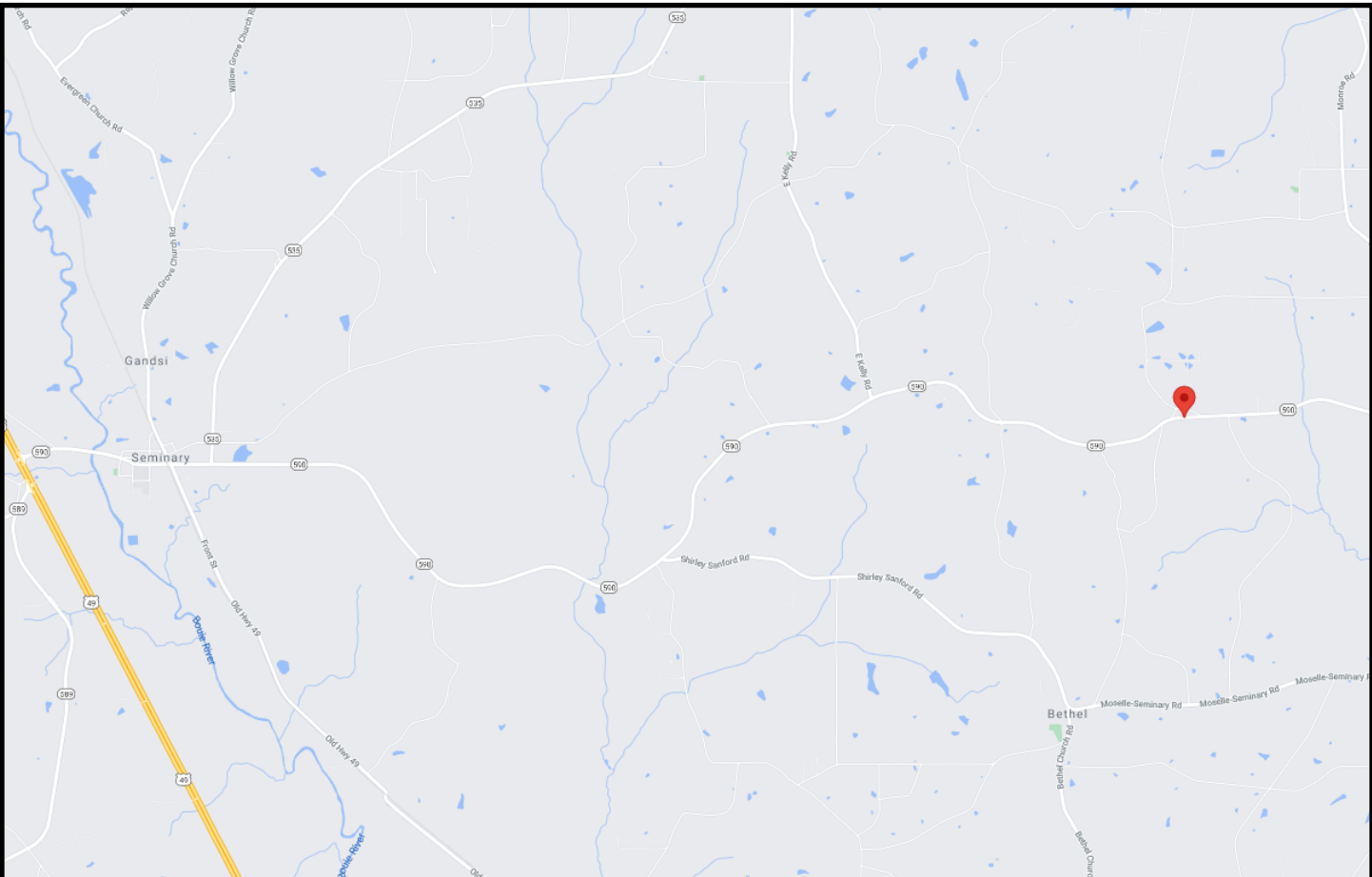
Ownership Map



BLAKE SASSER, REALTOR®
Blake@TomSmithLand.com
601.990.5070 office | 601-757-5027 cell

TomSmithLandandHomes.com

Information is believed to be accurate but not guaranteed.



Directional Map

Directions from Exit 85 at Interstate 59 in Hattiesburg, MS: Travel southwest on MS-590 W for 10.7 miles. The destination will be on the right.



BLAKE SASSER, REALTOR®
 Blake@TomSmithLand.com
 601.990.5070 office | 601-757-5027 cell

TomSmithLandandHomes.com

Information is believed to be accurate but not guaranteed.