



Secluded Cabin on 7.87+/- Acres Pike County, MS



3175 Union Church Road Magnolia, MS 39652

Come take a look at this Move-in-ready three bedroom, two bath cabin situated on 7.87+/- rolling acres in Pike County, MS. A mix of hardwoods and pine with a long stretch of gravel drive lead to the back of this private, secluded 1,800+/- square foot raised cabin. Enjoy the sound of rain on the metal roof and admire the wildlife from the wrap around deck. The open floor plan features new flooring in the kitchen and living room, an oversized pantry, a spacious office and access to the porch from almost every room in the home. Because this home is elevated, you will find plenty of room for patio furniture and space to park your vehicles and ATVs. This could be your new weekend getaway, or a permanent peaceful residence, the possibilities are endless. Also, there are two storage rooms. This property is located in Magnolia, just minutes from Interstates 55 and McComb. The access to this property is by deeded easement on Union Church Road. Call Sabrina today to schedule your showing!

Directions from Interstate 55 N at exit 10 towards Magnolia, MS: After taking the exit, cross the railroad tracks and veer to the left in the Y. The house will be on your left in less than 2 miles.



2011-2020
BEST
BROKERAGES

call me today!

SABRINA WOLFE, REALTOR®
Sabrina@TomSmithHomes.com
601.990.5070 office | 601.754.3763 cell



TomSmithLandandHomes.com

Information is believed to be accurate but not guaranteed.



2011-2020
BEST
BROKERAGES

Call me today!

SABRINA WOLFE, REALTOR®
Sabrina@TomSmithHomes.com
601.990.5070 office | 601.754.3763 cell



Expect More. Get More.

TomSmithLandandHomes.com

Information is believed to be accurate but not guaranteed.



2011-2020
BEST
BROKERAGES

Call me today!

SABRINA WOLFE, REALTOR®
Sabrina@TomSmithHomes.com
601.990.5070 office | 601.754.3763 cell



TomSmithLandandHomes.com

Information is believed to be accurate but not guaranteed.



2011-2020
BEST
BROKERAGES

call me today!

SABRINA WOLFE, REALTOR®
Sabrina@TomSmithHomes.com
601.990.5070 office | 601.754.3763 cell

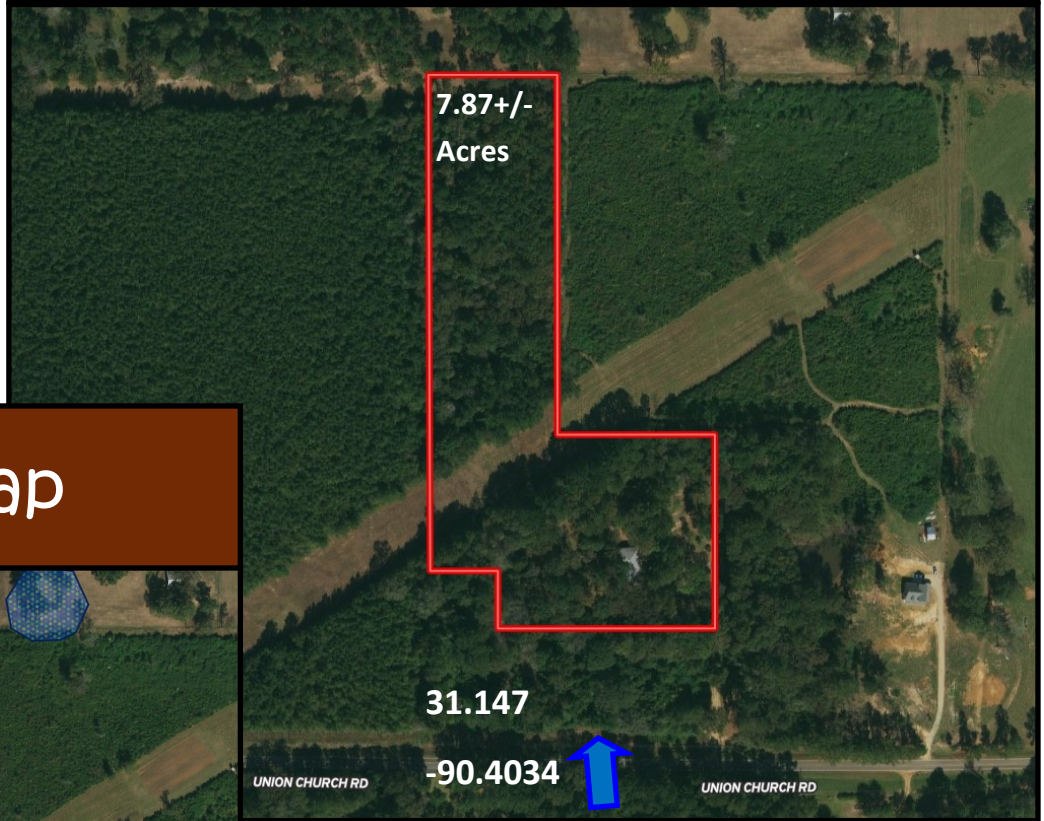


Expect More. Get More.

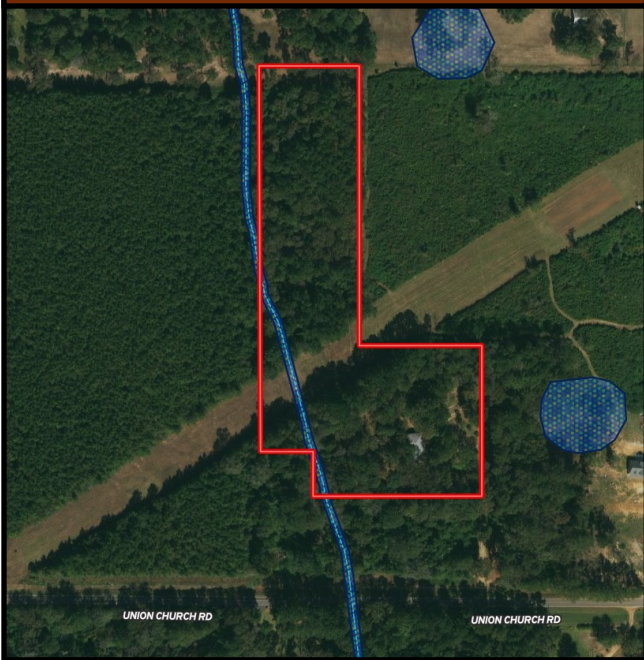
TomSmithLandandHomes.com

Information is believed to be accurate but not guaranteed.

Aerial Map



Flood Map



call me today!

SABRINA WOLFF, REALTOR®

Sabrina@TomSmithHomes.com

601.990.5070 office | 601.754.3763 cell

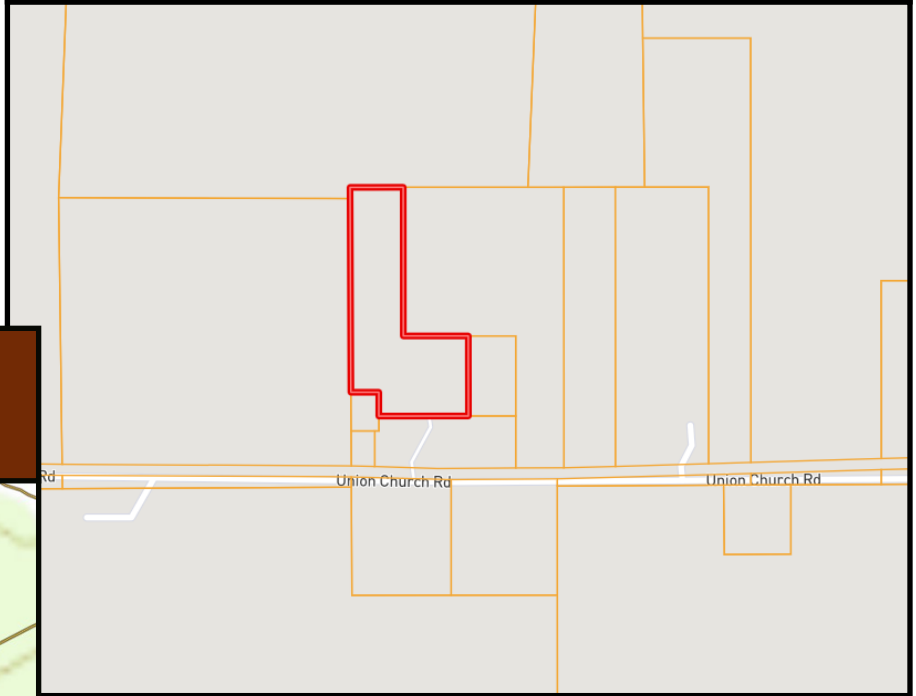


Expect More. Get More.

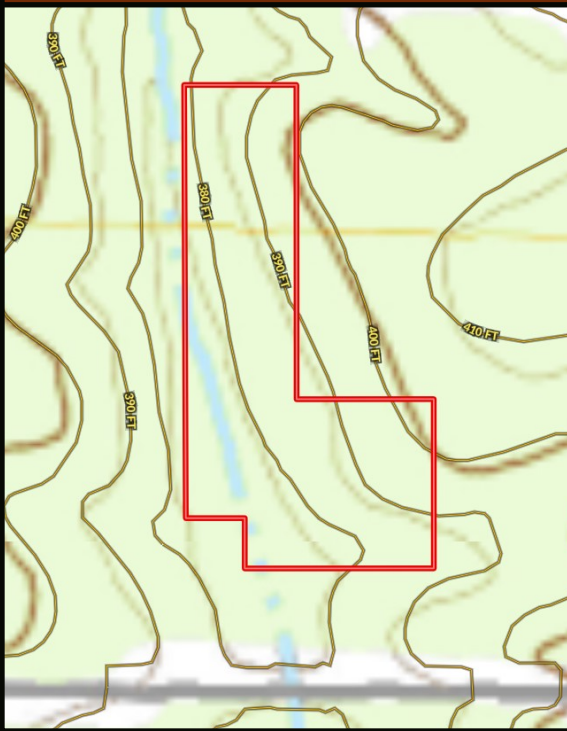
TomSmithLandandHomes.com

Information is believed to be accurate but not guaranteed.

Ownership Map



Topo Map



2011-2020
BEST
BROKERAGES

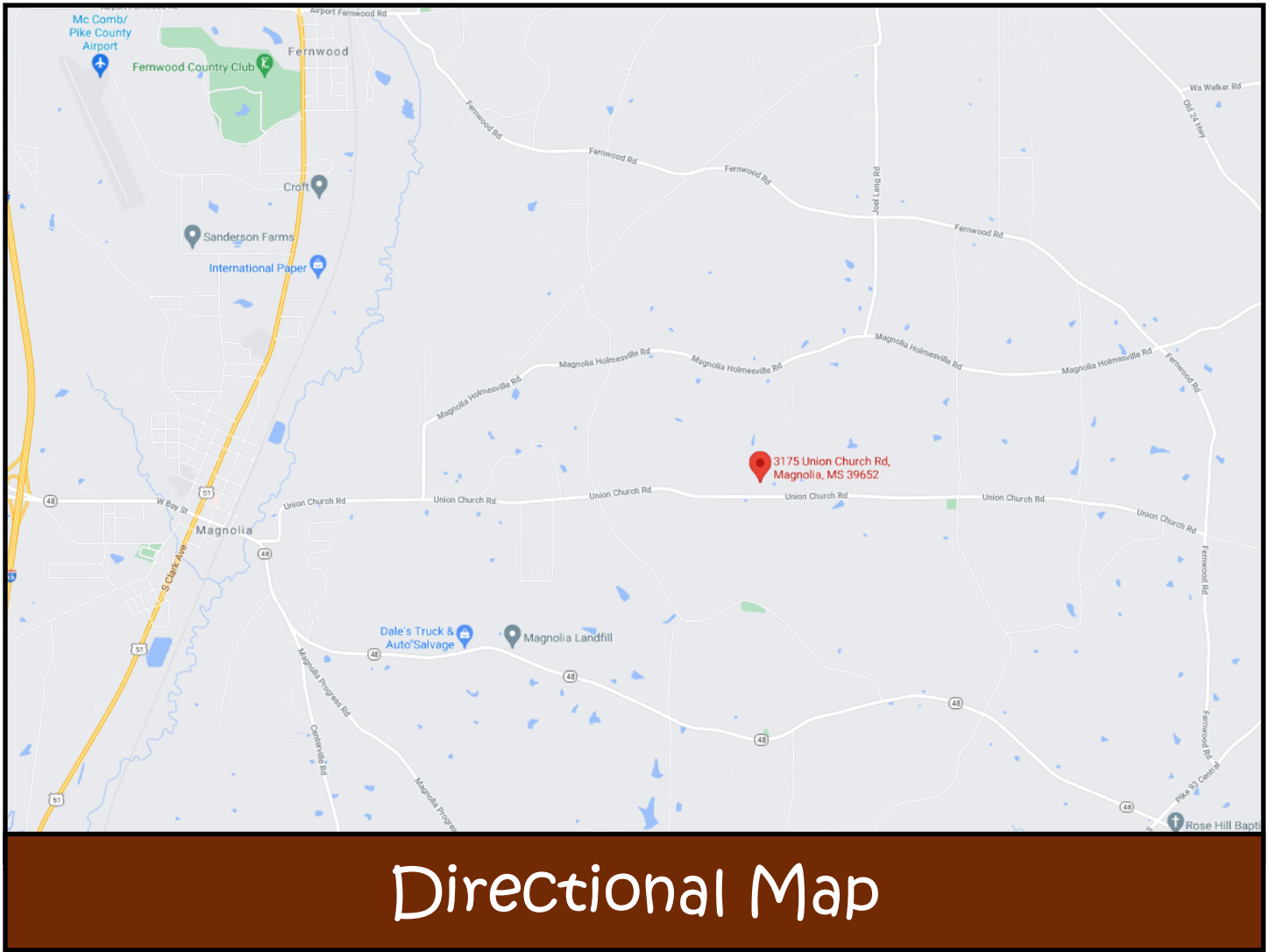
Call me today!

SABRINA WOLFF, REALTOR®
Sabrina@TomSmithHomes.com
601.990.5070 office | 601.754.3763 cell



TomSmithLandandHomes.com

Information is believed to be accurate but not guaranteed.



3175 Union Church Road Magnolia, MS 39652

Directions from Interstate 55 N at exit 10 towards Magnolia, MS: After taking the exit, cross the railroad tracks and veer to the left in the Y. The house will be on your left in less than 2 miles.



Call me today!



SABRINA WOLFF, REALTOR®
 Sabrina@TomSmithHomes.com
 601.990.5070 office | 601.754.3763 cell



Expect More. Get More.

TomSmithLandandHomes.com

Information is believed to be accurate but not guaranteed.