

Home on 8.25+/- Beautifully Landscaped Acres Pike County, MS



\$225,000

5045 McComb Holmesville Road McComb, MS 39648

New to the market in Pike County, MS! Looking for a place to call home with acreage... this 2,400+/- square foot home is situated on 8.25+/- beautifully landscaped acres. The home features four bedrooms, two baths, walk-in closets, a large eat-in kitchen with an oversized island, two living rooms, a dining room and an office. The split floor plan offers the master on one end and guest rooms on the other. The treehouse out back will seal the deal for the kiddos! The nice front porch is perfect for morning coffee while the large back deck is great for afternoons to wind down and enjoy company. Keep the car out of the weather in the carport. This well-kept property is in the North Pike School district on McComb Holmesville Road, convenient to I-55 and all the amenities McComb has to offer. The two metal buildings in the back yard are not included in the purchase. Call Sabrina to schedule your private viewing today!

Directions from I-55 in McComb, MS, exit onto Hwy 98: Travel 7.9 miles on US-98 E. Turn left onto Gibson Road. Travel 1.9 miles and take a slight right onto McComb Holmesville Road. The property will be on your right in 0.4 miles.



2011-2020
BEST
BROKERAGES

call me today!

SABRINA WOLFE, REALTOR®
Sabrina@TomSmithHomes.com
601.990.5070 office | 601.754.3763 cell



Expect More. Get More.

TomSmithLandandHomes.com

Information is believed to be accurate but not guaranteed.



call me today!

SABRINA WOLFF, REALTOR®
 Sabrina@TomSmithHomes.com
 601.990.5070 office | 601.754.3763 cell



TomSmithLandandHomes.com

Information is believed to be accurate but not guaranteed.



2011-2020
BEST
BROKERAGES

call me today!

SABRINA WOLFE, REALTOR®
Sabrina@TomSmithHomes.com
601.990.5070 office | 601.754.3763 cell



TomSmithLandandHomes.com

Information is believed to be accurate but not guaranteed.



2011-2020
BEST
BROKERAGES

call me today!

SABRINA WOLFF, REALTOR®
Sabrina@TomSmithHomes.com
601.990.5070 office | 601.754.3763 cell



Expect More. Get More.

TomSmithLandandHomes.com

Information is believed to be accurate but not guaranteed.

Aerial Map



call me today!

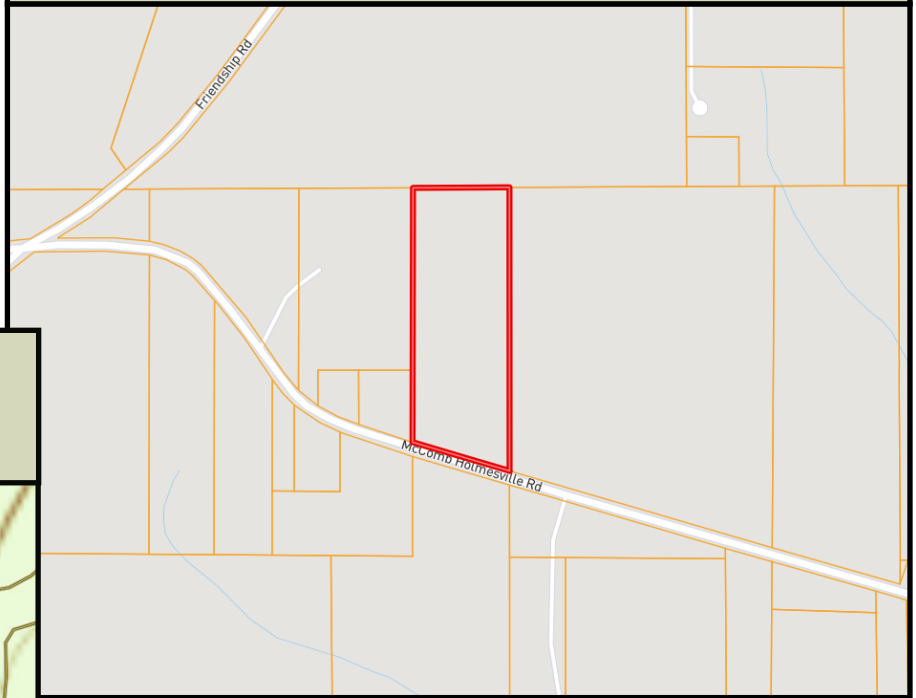
SABRINA WOLFF, REALTOR®
Sabrina@TomSmithHomes.com
601.990.5070 office | 601.754.3763 cell



TomSmithLandandHomes.com

Information is believed to be accurate but not guaranteed.

Ownership Map



Topo Map



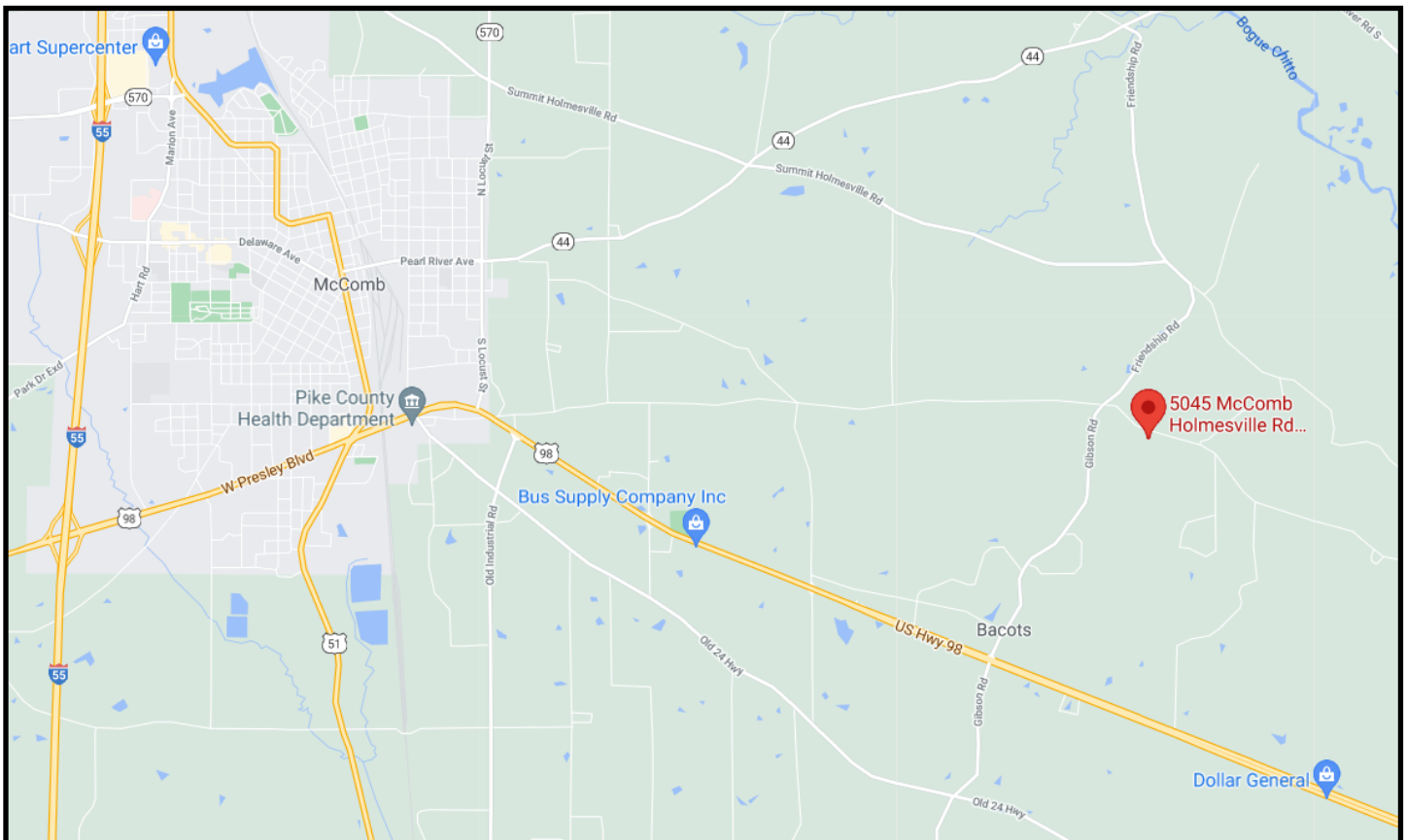
call me today!

SABRINA WOLFF, REALTOR®
Sabrina@TomSmithHomes.com
601.990.5070 office | 601.754.3763 cell



TomSmithLandandHomes.com

Information is believed to be accurate but not guaranteed.



Directional Map

5045 McComb Holmesville Road McComb, MS 39648

Directions from I-55 in McComb, MS, exit onto Hwy 98: Travel 7.9 miles on US-98 E. Turn left onto Gibson Road. Travel 1.9 miles and take a slight right onto McComb Holmesville Road. The property will be on your right in 0.4 miles.



call me today!

SABRINA WOLFF, REALTOR®

Sabrina@TomSmithHomes.com

601.990.5070 office | 601.754.3763 cell



Expect More. Get More.



TomSmithLandandHomes.com

Information is believed to be accurate but not guaranteed.