



# Two Story Home on 10.7+/- Secluded Acres Walthall County, MS



561 Hwy 48 W  
Tylertown, MS 39667

**\$665,000**

Check out this two story home situated on 10.7+/- secluded, private acres in Walthall County, MS. This **MUST SEE** home offers six bedrooms, six and a half baths and is located in Tylertown off Hwy 48 W, minutes from Interstate 55. Just inside the front entry you will find a spacious living room with beautiful wood beams and a wood burning fire place. The first level features a master bedroom and bath, a guest bedroom and bath, along with a 1/2 bath. Two dining rooms allow plenty of room for entertaining. If extra space is what you need, mosey upstairs where you'll find four bedrooms, three baths, a spacious living room suite with a kitchen and a play area. Speaking of play...enjoy the fully enclosed, in-ground swimming pool and Jacuzzi **YEAR ROUND!** Above the two-car garage is a balcony, perfect for direct access to the second floor. There is also a workshop for the handyman or storage. This property is less than a mile from the famous Paradise Ranch Camp Ground and offers quick access to the state line. Sweetwater Creek runs through the far right hand corner of the property offering a nice water feature. The acreage is plenty big enough for hunting or gardening and a gazebo is on the property for outdoor entertaining. Call Konner or Sabrina today to schedule a showing!

Directions from Tylertown, MS: Travel west on Hwy 48 W and in 5.5 miles the house will be on the right.



**KONNER BURKE**, REALTOR®  
Konner@TomSmithLand.com  
601.990.5070 office | 601.757.4447 cell



Expect More. Get More.

*Call us today!*



**SABRINA WOLFE**, ASSOCIATE BROKER®  
Sabrina@TomSmithHomes.com  
601.990.5070 office | 601.754.3763 cell

**TomSmithLandandHomes.com**



Information is believed to be accurate but not guaranteed.



**KONNER BURKE**, REALTOR®  
Konner@TomSmithLand.com  
601.990.5070 office | 601.757.4447 cell



Expect More. Get More.

*Call us today!*



**SABRINA WOLFE**, ASSOCIATE BROKER®  
Sabrina@TomSmithHomes.com  
601.990.5070 office | 601.754.3763 cell

**TomSmithLandandHomes.com**

Information is believed to be accurate but not guaranteed.





**KONNER BURKE**, REALTOR®  
Konner@TomSmithLand.com  
601.990.5070 office | 601.757.4447 cell



Expect More. Get More.

*Call us today!*



**SABRINA WOLFE**, ASSOCIATE BROKER®  
Sabrina@TomSmithHomes.com  
601.990.5070 office | 601.754.3763 cell

**TomSmithLandandHomes.com**

Information is believed to be accurate but not guaranteed.





**KONNER BURKE**, REALTOR®  
 Konner@TomSmithLand.com  
 601.990.5070 office | 601.757.4447 cell



Expect More. Get More.

*Call us today!*



**SABRINA WOLFE**, ASSOCIATE BROKER®  
 Sabrina@TomSmithHomes.com  
 601.990.5070 office | 601.754.3763 cell

**TomSmithLandandHomes.com**

Information is believed to be accurate but not guaranteed.





**KONNER BURKE**, REALTOR®  
Konner@TomSmithLand.com  
601.990.5070 office | 601.757.4447 cell



Expect More. Get More.

*Call us today!*



**SABRINA WOLFE**, ASSOCIATE BROKER®  
Sabrina@TomSmithHomes.com  
601.990.5070 office | 601.754.3763 cell

**TomSmithLandandHomes.com**

Information is believed to be accurate but not guaranteed.



# Aerial Map



**KONNER BURKE**, REALTOR®  
Konner@TomSmithLand.com  
601.990.5070 office | 601.757.4447 cell



Expect More. Get More.

*Call us today!*



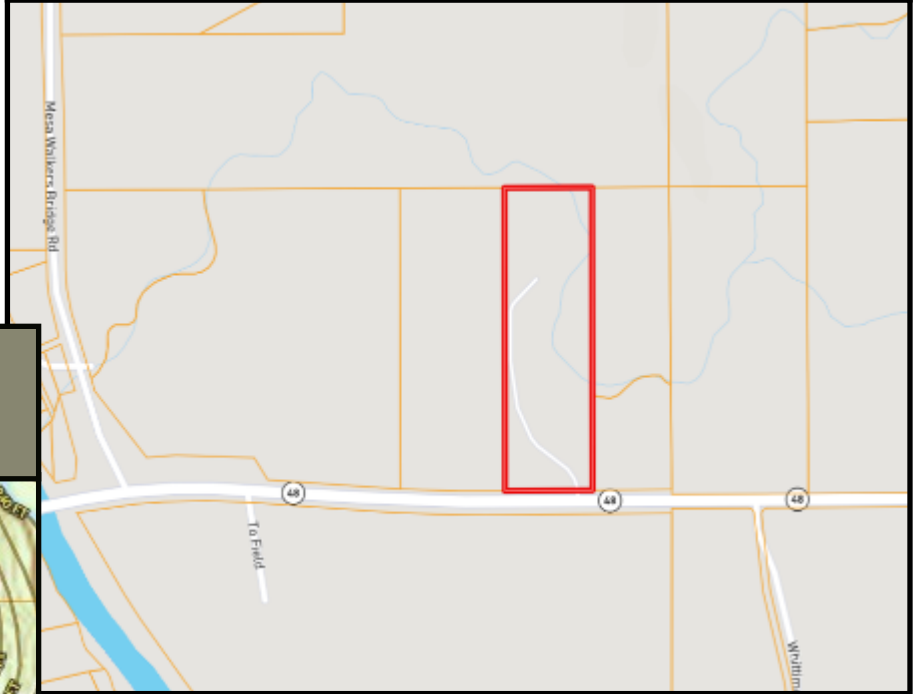
**SABRINA WOLFE**, ASSOCIATE BROKER®  
Sabrina@TomSmithHomes.com  
601.990.5070 office | 601.754.3763 cell

**TomSmithLandandHomes.com**

Information is believed to be accurate but not guaranteed.



# Ownership Map



# Topo Map



**KONNER BURKE**, REALTOR®  
Konner@TomSmithLand.com  
601.990.5070 office | 601.757.4447 cell



Expect More. Get More.

*Call us today!*

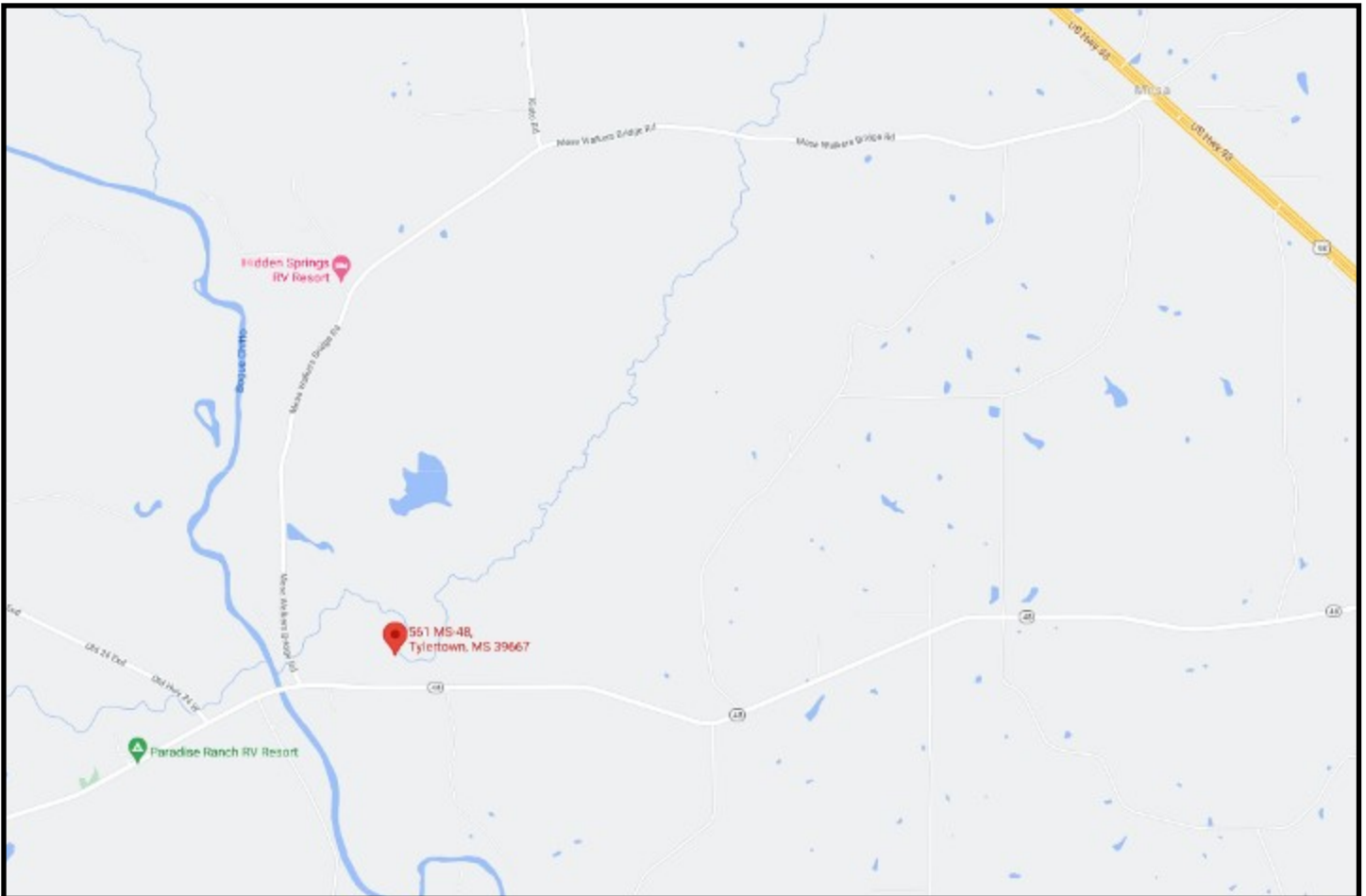


**SABRINA WOLFE**, ASSOCIATE BROKER®  
Sabrina@TomSmithHomes.com  
601.990.5070 office | 601.754.3763 cell

**TomSmithLandandHomes.com**

Information is believed to be accurate but not guaranteed.





# Directional Map

561 Hwy 48 w Tylertown, MS 39667

Directions from Tylertown, MS: Travel west on Hwy 48 W and in 5.5 miles the house will be on the right.



*Call us today!*

