

Secluded Home on 16+/- Acres

2710 Hopewell Rd, Little Rock, MS 39337



\$165,000

- 2,284 sqft/ 3BD, 3BA Home
- Newton County, MS
- RV Storage
- Mobile Home
- Storm Shelter
- 2 Car garage/ Shop
- 16 +/- Acre Lot
- 15 +/- Acres of Pine Timber
- .3+/- Acre Pond
- Private Drive
- 2 Storage Buildings

***Directions from Little Rock, MS;** Travel east on MS-494 for 1.9 miles. Turn right on Hopewell Rd and travel for 3.8 miles, make a slight left to stay on Hopewell Rd for .08 miles. The property will be on the right.*



call me today!

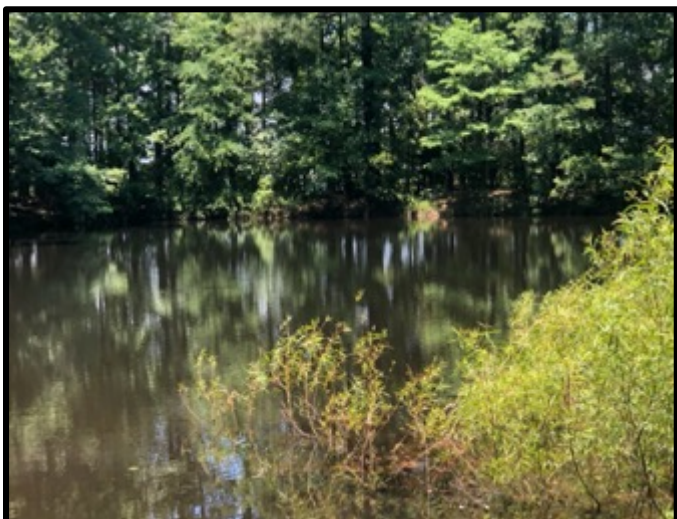
JOHN DEL PAPA, REALTOR®
John@TomSmithHomes.com
662.268.6333 office | 662.788.2455 cell



TomSmithLandandHomes.com

Information is believed to be accurate but not guaranteed.

This place has it all! As you arrive at the private drive you will find an amazing house situated on 16 +/- secluded acres in Newton County, MS! All this house needs is **you** to make it a home! A mobile home, RV storage, two storage buildings, storm shelter, and a two-car garage/shop are surrounded by young pines! The main house features three bedrooms, three baths, an enclosed back porch, and a large living room with a fireplace. The kitchen features an island that opens up to the large dining room offering ample room for entertaining family and friends. Beyond the huge grassy yard, follow the trail to your very own private pond! For a private showing, call John today!



JOHN DEL PAPA, REALTOR®
John@TomSmithHomes.com
662.268.6333 office | 662.788.2455 cell



TomSmithLandandHomes.com

Information is believed to be accurate but not guaranteed.

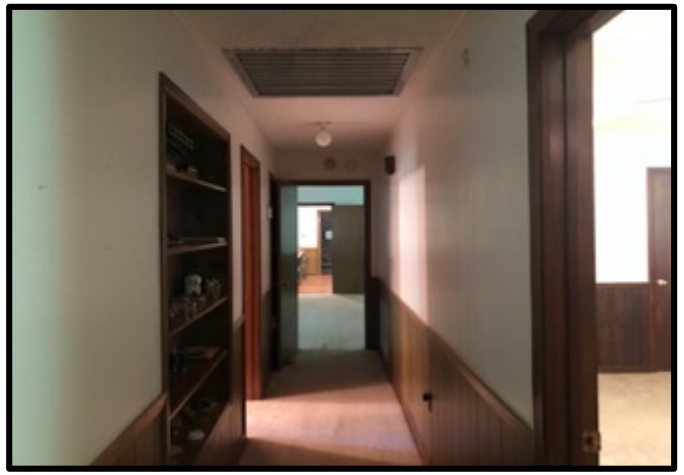


JOHN DEL PAPA, REALTOR®
John@TomSmithHomes.com
662.268.6333 office | 662.788.2455 cell

TomSmithLandandHomes.com

Information is believed to be accurate but not guaranteed.





JOHN DEL PAPA, REALTOR®
John@TomSmithHomes.com
662.268.6333 office | 662.788.2455 cell

TomSmithLandandHomes.com

Information is believed to be accurate but not guaranteed.



JOHN DEL PAPA, REALTOR®
John@TomSmithHomes.com
662.268.6333 office | 662.788.2455 cell



TomSmithLandandHomes.com

Information is believed to be accurate but not guaranteed.



JOHN DEL PAPA, REALTOR®
John@TomSmithHomes.com
662.268.6333 office | 662.788.2455 cell



TomSmithLandandHomes.com

Information is believed to be accurate but not guaranteed.



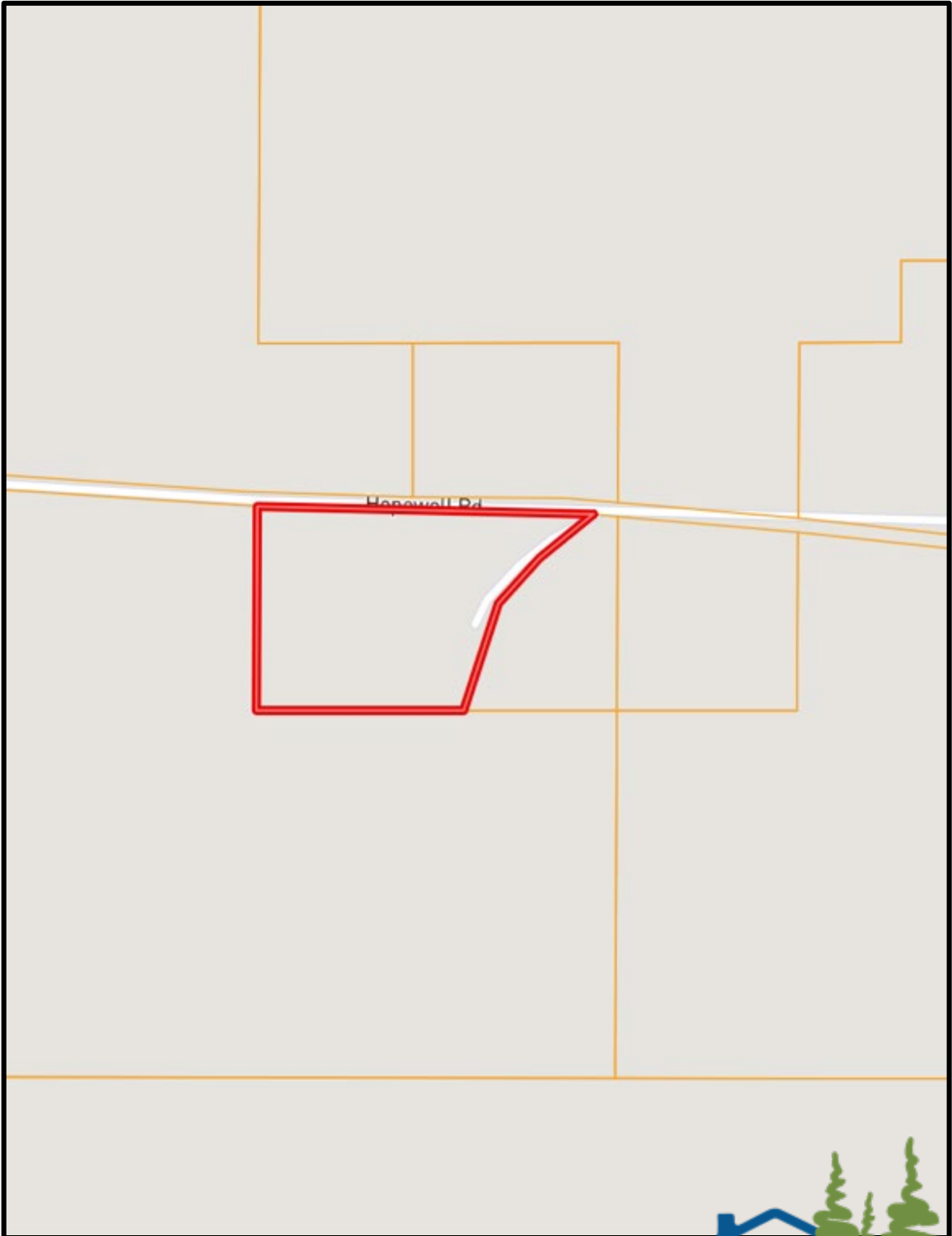
JOHN DEL PAPA, REALTOR®
John@TomSmithHomes.com
662.268.6333 office | 662.788.2455 cell



TomSmithLandandHomes.com

Information is believed to be accurate but not guaranteed.

Ownership Map



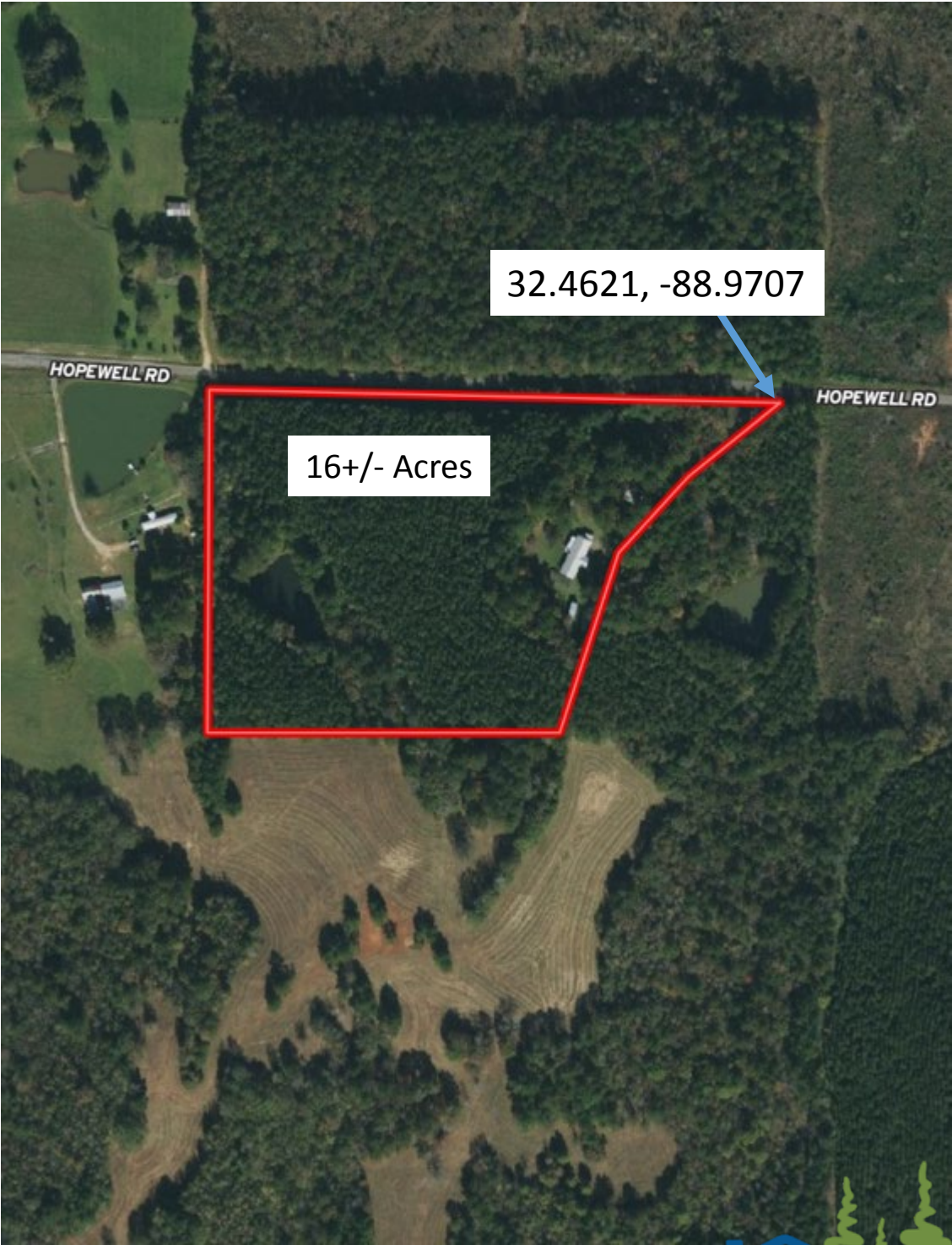
JOHN DEL PAPA, REALTOR®
John@TomSmithHomes.com
662.268.6333 office | 662.788.2455 cell



TomSmithLandandHomes.com

Information is believed to be accurate but not guaranteed.

Aerial Map



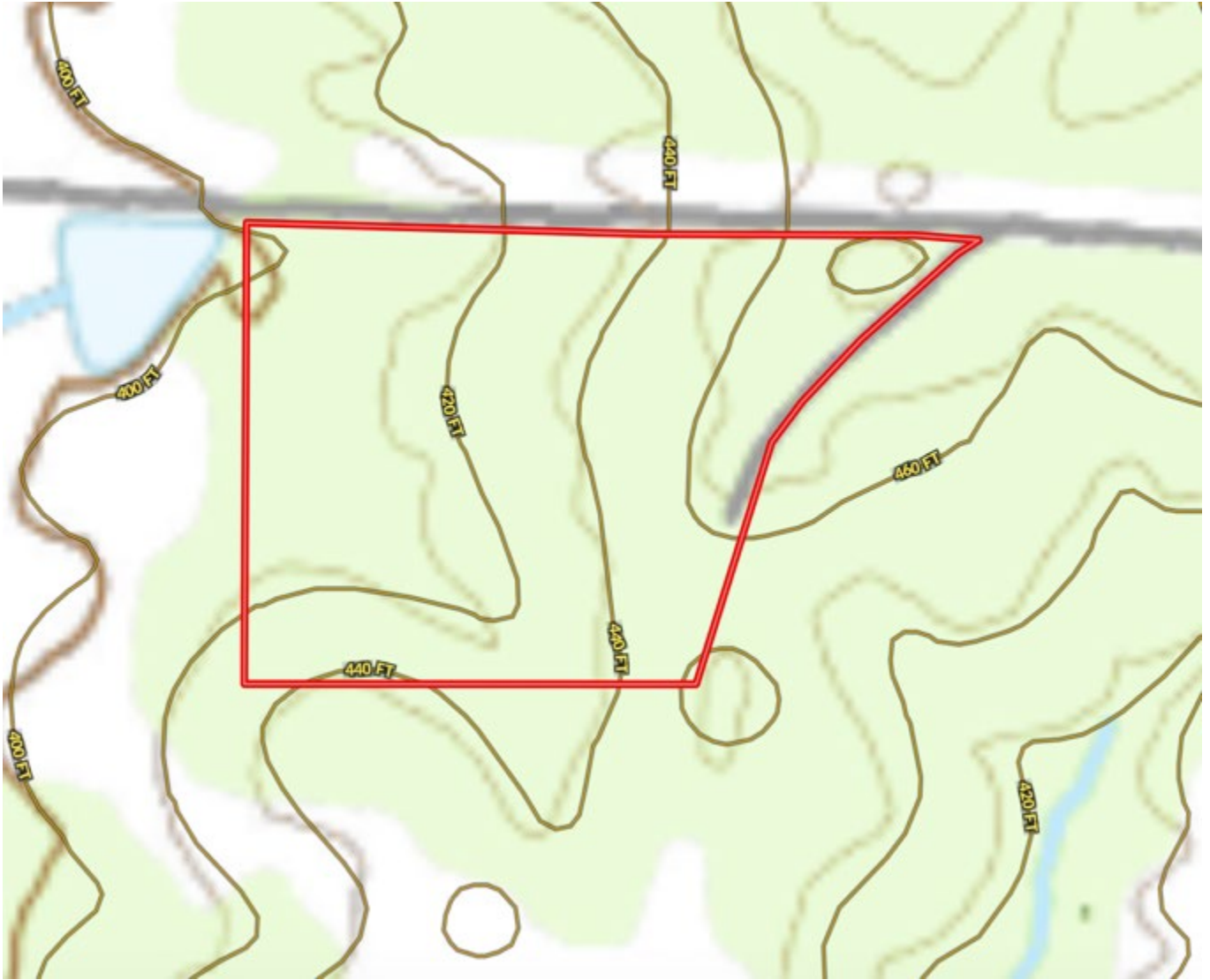
JOHN DEL PAPA, REALTOR®
John@TomSmithHomes.com
662.268.6333 office | 662.788.2455 cell

TomSmithLandandHomes.com

Information is believed to be accurate but not guaranteed.



Topographic Map



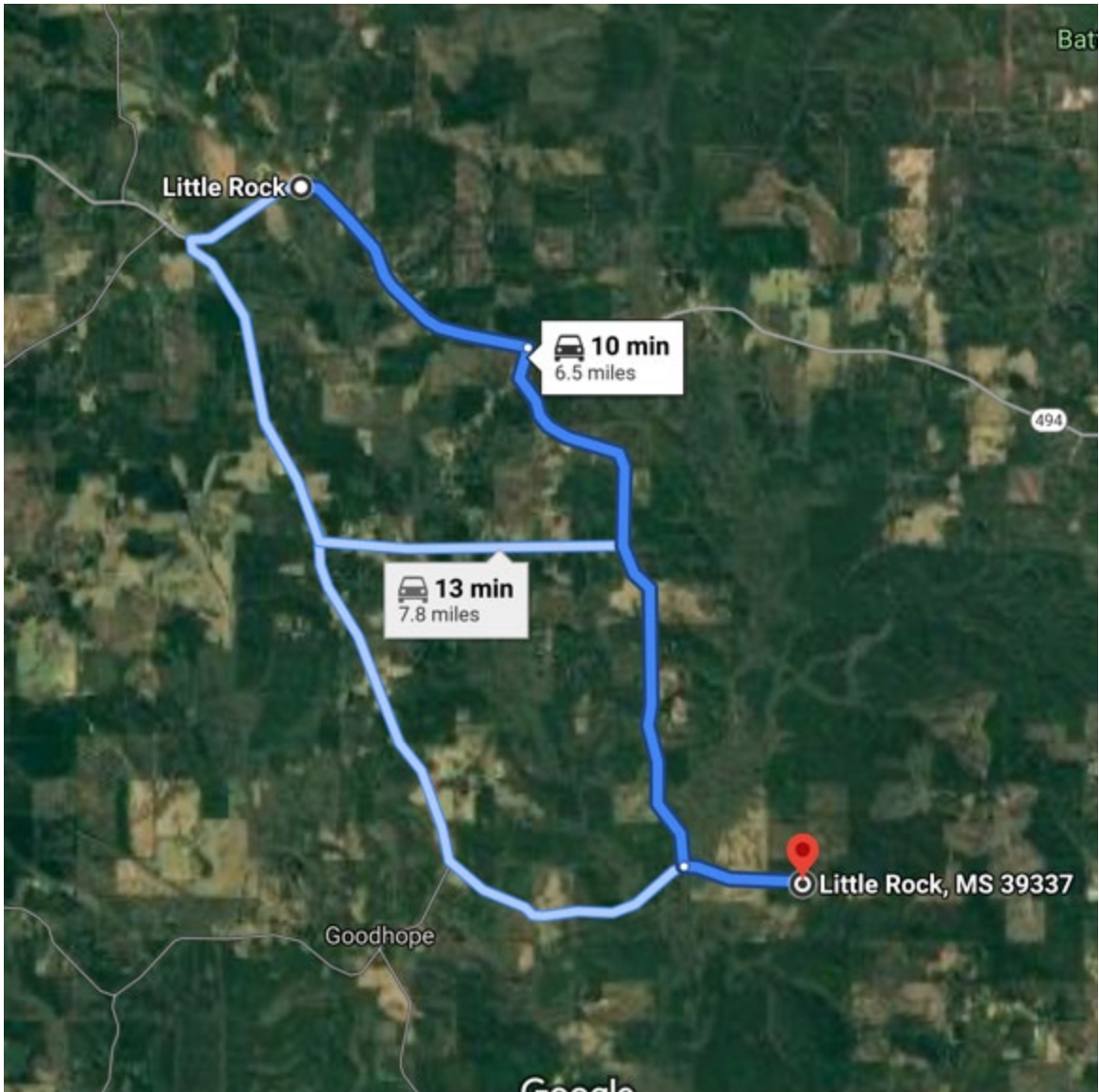
JOHN DEL PAPA, REALTOR®
John@TomSmithHomes.com
662.268.6333 office | 662.788.2455 cell



TomSmithLandandHomes.com

Information is believed to be accurate but not guaranteed.

Directional Map



Directions from Little Rock, MS: Travel east on MS-494 for 1.9 miles. Turn right on Hopewell Rd and travel for 3.8 miles, make a slight left to stay on Hopewell Rd for .08 miles. The property will be on the right.

Address: 2710 Hopewell Rd, Little Rock, MS 39337



call me today!

JOHN DEL PAPA, REALTOR®

John@TomSmithHomes.com

662.268.6333 office | 662.788.2455 cell



Expect More. Get More.

TomSmithLandandHomes.com

Information is believed to be accurate but not guaranteed.