



Show Stopper Home on 1.33+/- Acres Lincoln County, MS



119 Hillcrest Drive
Brookhaven, MS 39601

\$315,000

Full of Character, with a mix of mid modern and chic...this Lincoln County, MS property is a **MUST SEE!** The 3,126+/- square foot, four bedroom, two and a half bath home is situated on 1.33+/- acres in Brookhaven, the Home Seekers Paradise! Natural lighting is one of the most beautiful features of this ranch. Three living areas currently are being used as a living room, game room and extra gathering area with office space. The kitchen provides an island with a built-in cooktop, two pantries, stainless steel appliances, a storage room for large pots and seasonal items, and a sliding window with access to bar space for dining just outside the kitchen. The main living room offers brand new carpet, a stone, gas fireplace with a mantle and I must admit, the oversized glass sliding door leading to the patio provides such a peaceful view. Just off the master bedroom is a glass ceiling patio perfect for a hot tub. The back yard is very spacious with a nice privacy fence. The property is located just blocks from Brookway Boulevard and less than a mile from Interstate 55. This place is a show stopper! Call Sabrina today to schedule a viewing!

Directions from Brookway Blvd in Brookhaven, MS: Traveling west, turn left on Magee Drive. Travel 0.2 miles and turn left onto Halbert Heights Road. Travel 0.1 miles and turn right onto Ripley Road. Travel 0.2 miles and Ripley Road turns left and becomes Hillcrest Drive. The home will be on the left in 92 feet.



2011-2020
NATIONAL
BEST
BROKERAGES

call me today!

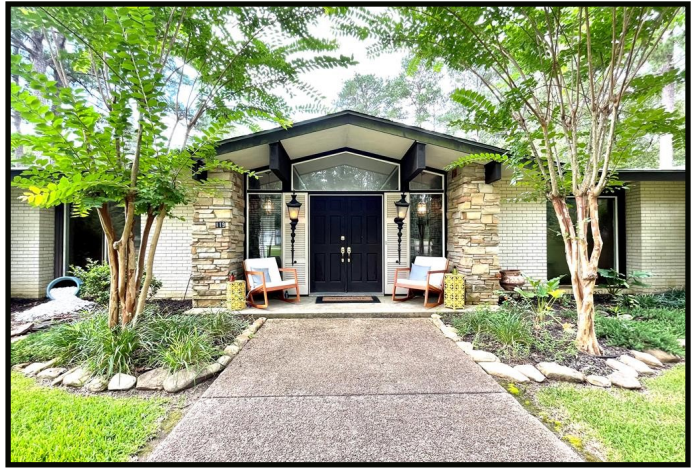
SABRINA WOLFE, REALTOR®
Sabrina@TomSmithHomes.com
601.990.5070 office | 601.754.3763 cell



Expect More. Get More.

TomSmithLandandHomes.com

Information is believed to be accurate but not guaranteed.



Call me today!

SABRINA WOLFF, REALTOR®

Sabrina@TomSmithHomes.com

601.990.5070 office | 601.754.3763 cell



Expect More. Get More.

TomSmithLandandHomes.com

Information is believed to be accurate but not guaranteed.

2011-2020
BEST
BROKERAGES



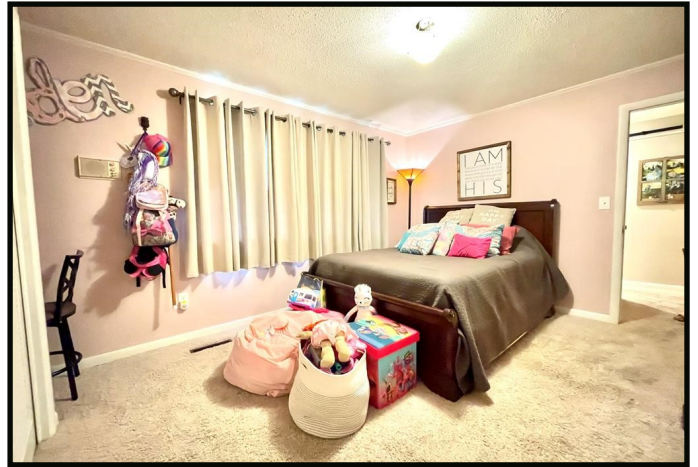
Call me today!

SABRINA WOLFF, REALTOR®
Sabrina@TomSmithHomes.com
601.990.5070 office | 601.754.3763 cell



TomSmithLandandHomes.com

Information is believed to be accurate but not guaranteed.



Call me today!

SABRINA WOLFF, REALTOR®

Sabrina@TomSmithHomes.com

601.990.5070 office | 601.754.3763 cell



Expect More. Get More.

TomSmithLandandHomes.com

Information is believed to be accurate but not guaranteed.

2011-2020
BEST
BROKERAGES



Aerial Map



2011-2020
BEST
BROKERAGES

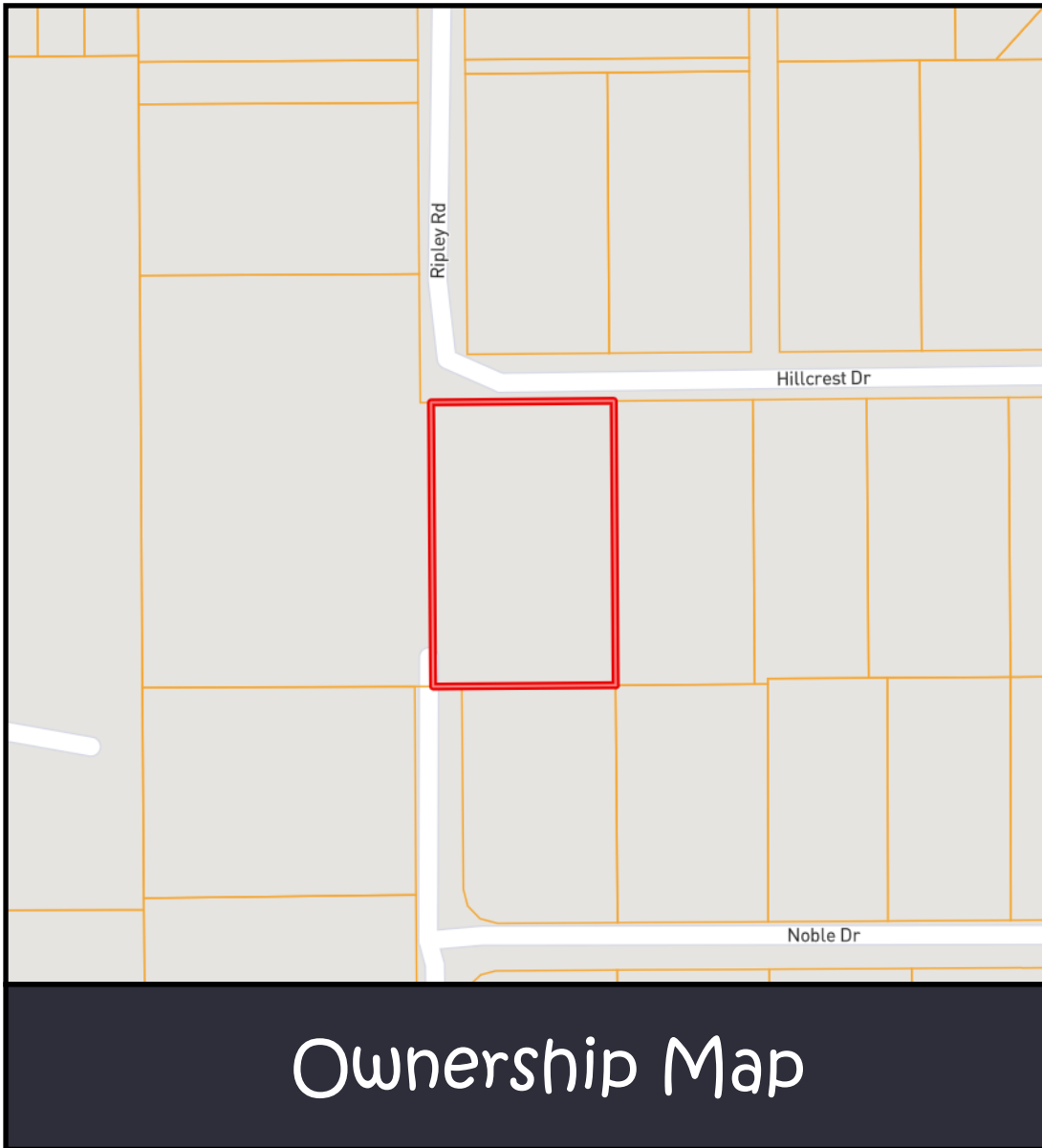
Call me today!

SABRINA WOLFF, REALTOR®
Sabrina@TomSmithHomes.com
601.990.5070 office | 601.754.3763 cell



TomSmithLandandHomes.com

Information is believed to be accurate but not guaranteed.



2011-2020
BEST
BROKERAGES

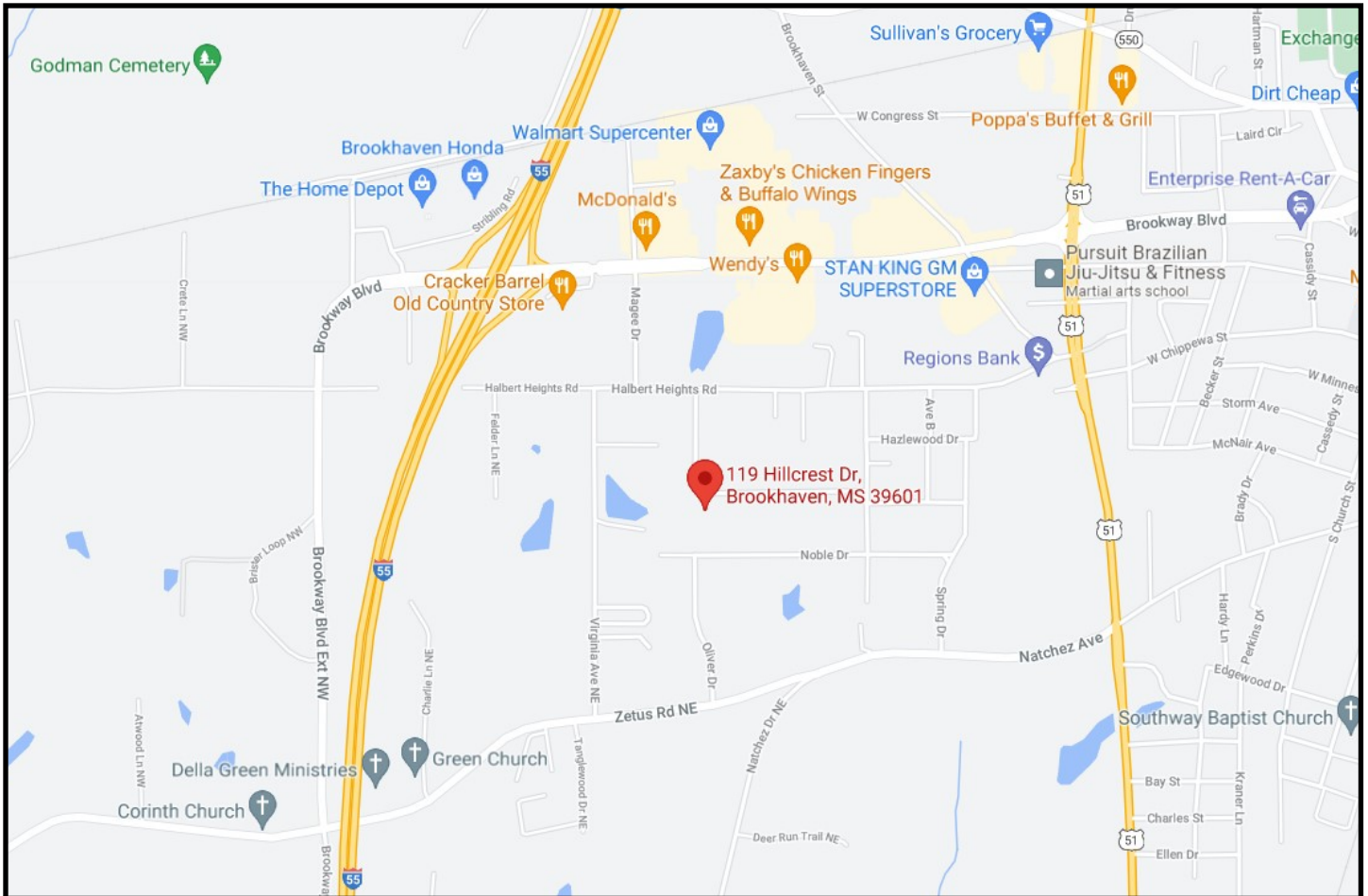
call me today!

SABRINA WOLFF, REALTOR®
Sabrina@TomSmithHomes.com
601.990.5070 office | 601.754.3763 cell



TomSmithLandandHomes.com

Information is believed to be accurate but not guaranteed.



Directional Map

119 Hillcrest Drive Brookhaven, MS 39601



Directions from Brookway Blvd in Brookhaven, MS: Traveling west, turn left on Magee Drive. Travel 0.2 miles and turn left onto Halbert Heights Road. Travel 0.1 miles and turn right onto Ripley Road. Travel 0.2 miles and Ripley Road turns left and becomes Hillcrest Drive. The home will be on the left in 92 feet.



Call me today!

SABRINA WOLFF, REALTOR®
 Sabrina@TomSmithHomes.com
 601.990.5070 office | 601.754.3763 cell



Expect More. Get More.

TomSmithLandandHomes.com

Information is believed to be accurate but not guaranteed.