



62.9+/- Acre Timber and Hunting Tract Jones County, MS



2742 HWY 11, Moselle, MS 39459

This 62.9+/- acre tract in Jones County, MS offers great deer, turkey and small game hunting. The property consists of mature pine and hardwood timber. A good interior road system is in place as well as established food plot areas. The property also features a cleared home site with utilities in place. This great property offers many uses and is located on HWY 11, between Jones Community College and Hattiesburg. Call Blake to schedule a viewing!

Directions from HWY 11 north: Go through Eastabuchie intersection at RR crossing and the property will be ahead approx. 2 miles on right. Directly across from Kathleen Lane.



call me today!

BLAKE SASSER, REALTOR®

Blake@TomSmithLand.com

601.990.5070 office | 601-757-5027 cell



Expect More. Get More.

TomSmithLandandHomes.com

Information is believed to be accurate but not guaranteed.



BLAKE SASSER, REALTOR®
 Blake@TomSmithLand.com
 601.990.5070 office | 601-757-5027 cell



Expect More. Get More.

TomSmithLandandHomes.com

Information is believed to be accurate but not guaranteed.

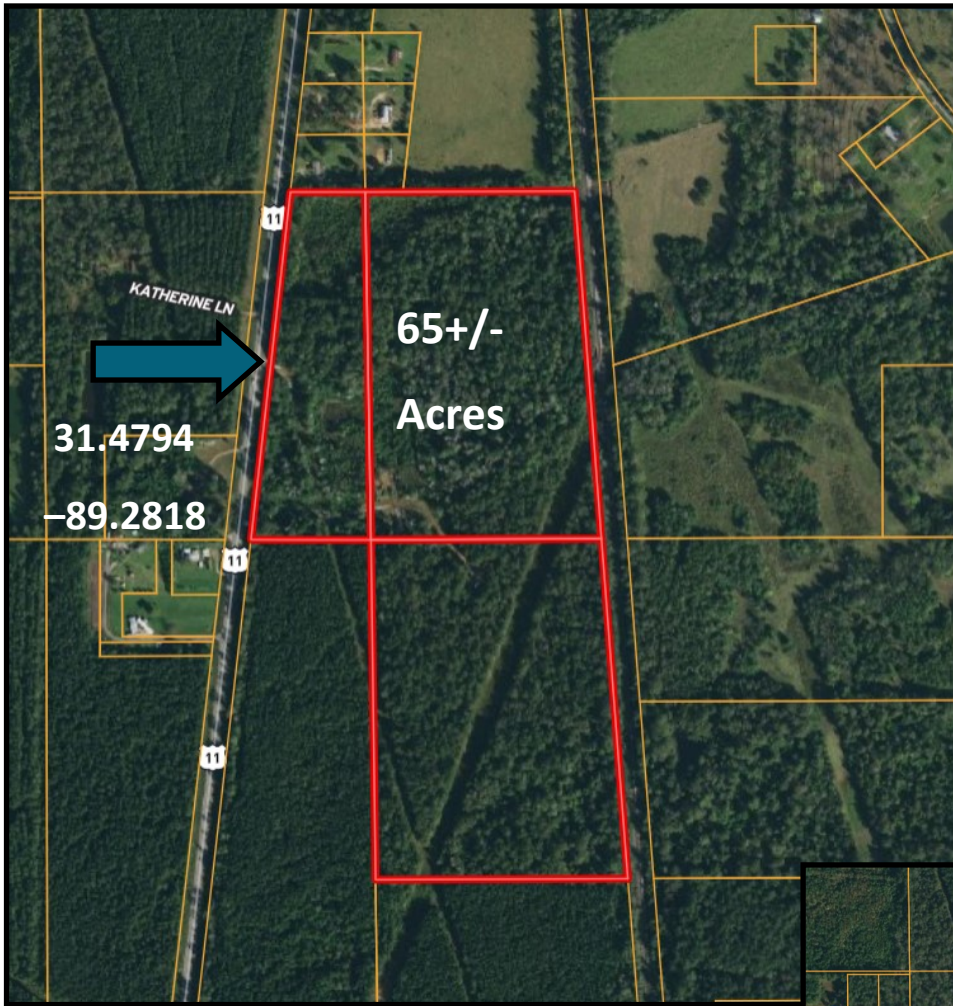


BLAKE SASSER, REALTOR®
Blake@TomSmithLand.com
601.990.5070 office | 601-757-5027 cell



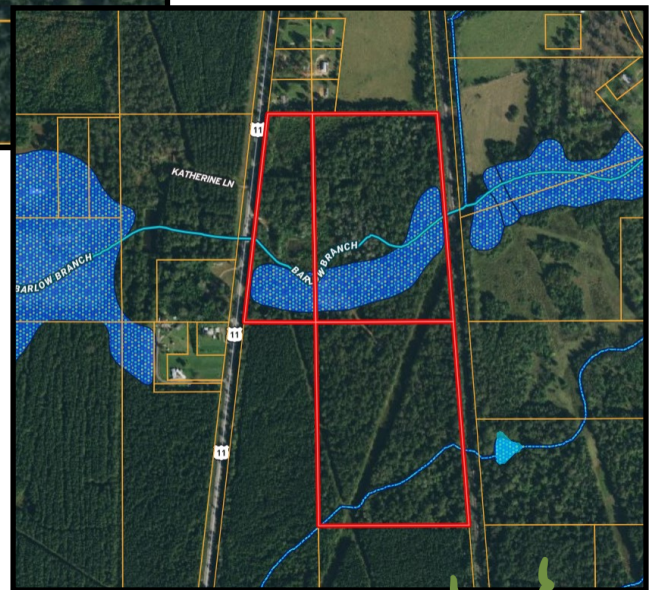
TomSmithLandandHomes.com

Information is believed to be accurate but not guaranteed.



**Aerial
Map**

**Flood
Map**

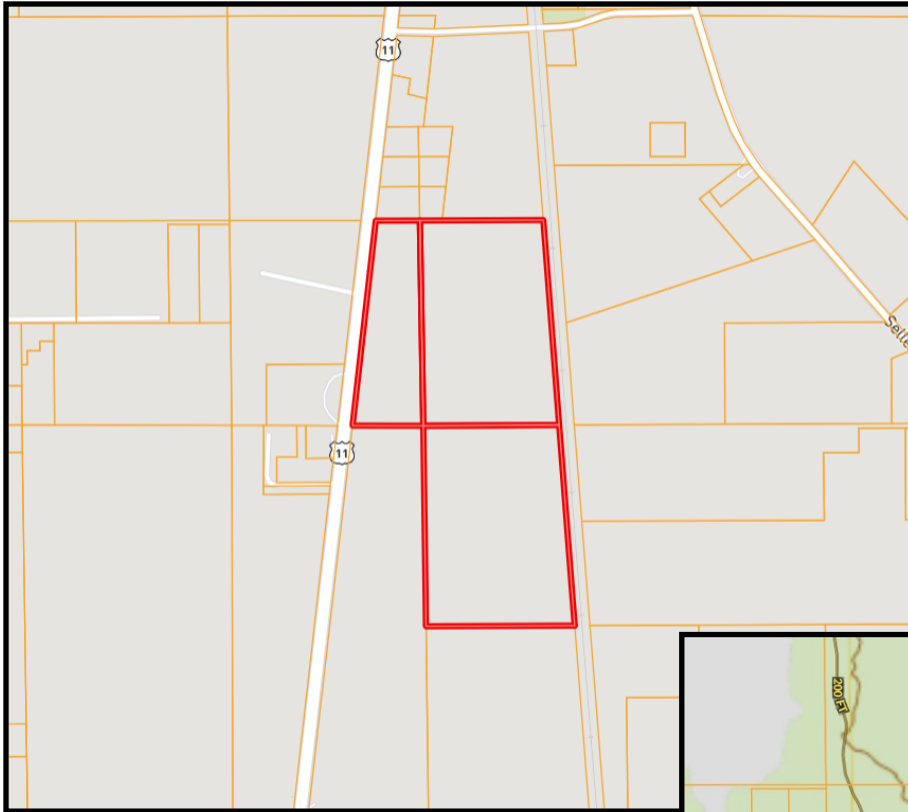


BLAKE SASSER, REALTOR®
 Blake@TomSmithLand.com
 601.990.5070 office | 601-757-5027 cell

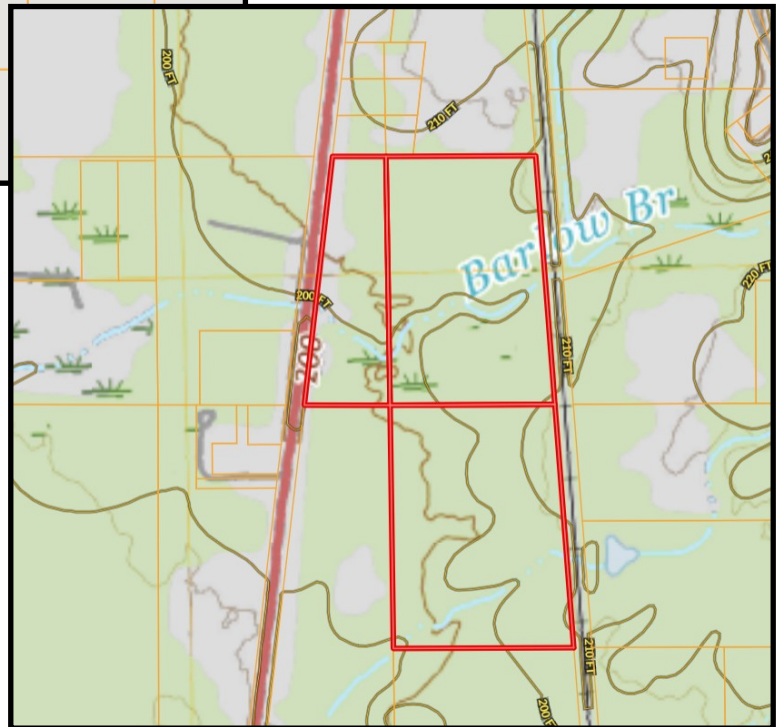
Expect More. Get More.

TomSmithLandandHomes.com

Information is believed to be accurate but not guaranteed.



**Ownership
Map**



**Topo
Map**

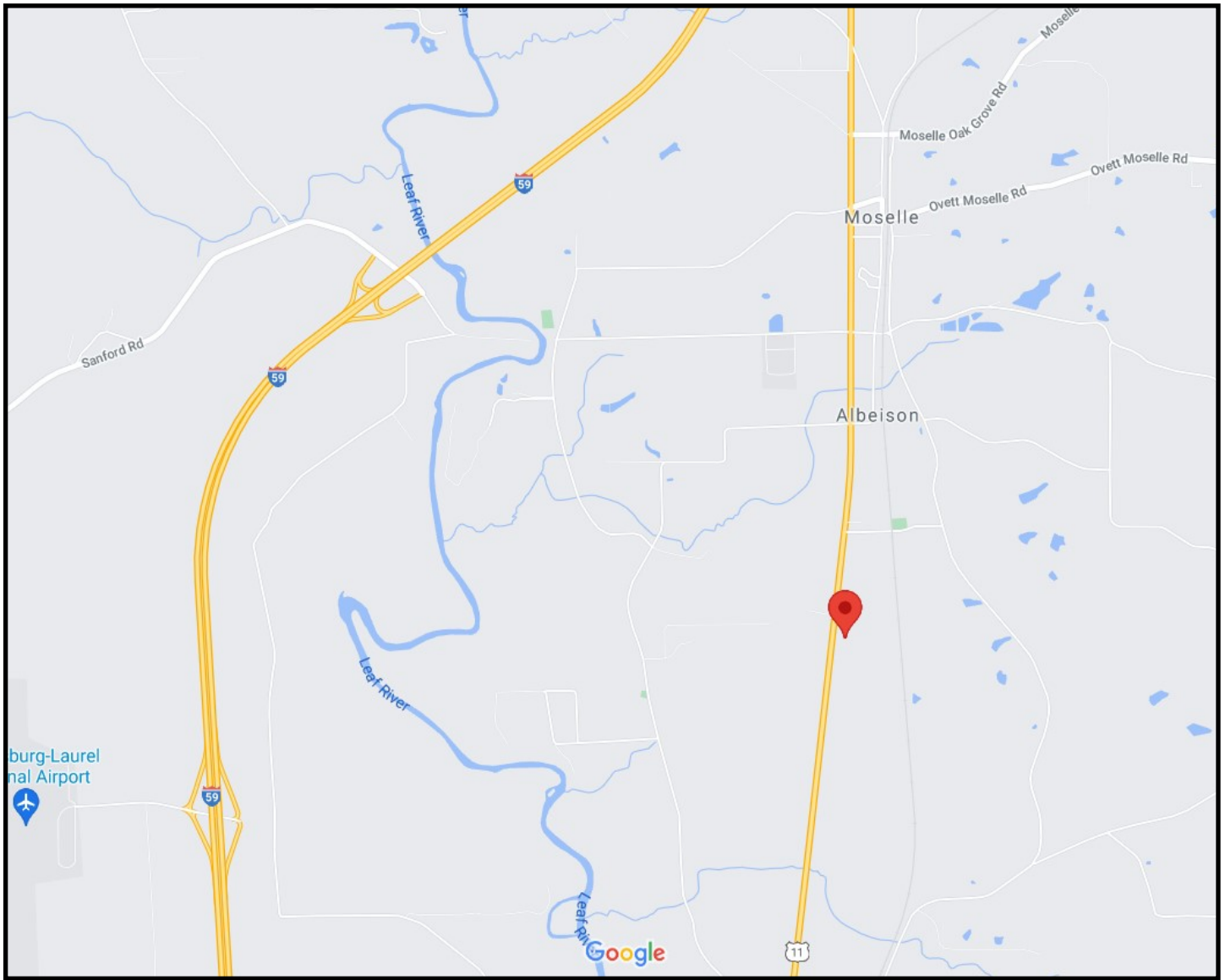


BLAKE SASSER, REALTOR®
Blake@TomSmithLand.com
601.990.5070 office | 601-757-5027 cell



TomSmithLandandHomes.com

Information is believed to be accurate but not guaranteed.



2742 HWY 11, Moselle, MS 39459

Directions from HWY 11 north: Go through Eastabuchie intersection at RR crossing and the property will be ahead approx. 2 miles on right. Directly across from Kathleen Lane.



Call me today!

BLAKE SASSER, REALTOR®
Blake@TomSmithLand.com
601.990.5070 office | 601-757-5027 cell



Expect More. Get More.



TomSmithLandandHomes.com

Information is believed to be accurate but not guaranteed.