

23+/- Acres of Opportunity in Choctaw County, MS



\$36,000

- 23+/- Acres in Choctaw County, MS
- Abundant Large and Small Game
- Gravel Road Frontage on McMinn Road
- Mature Pine and Hardwood Timber
- Old Beaver Pond and Live Creek
- Multiple ATV Trails
- Convenient to Ackerman
- Utilities Available

If you are looking for a smaller property with variety, here you go! The multiple ATV trails make it easy to experience your own oasis of nature from the mature trees, wild game, live creek and an old beaver pond! This property is located just minutes from Ackerman, MS. The gravel road frontage on McMinn Road will make it easy to access your new property. Don't miss out, text or call Michael today!

Directions: From the intersection of Hwy 15 and Hwy 12 in Ackerman, drive south on Hwy 15 for 1.5 miles. Then, turn left onto McMinn Road and the destination will be on the right. [GOOGLE MAPS LINK](#)



Call me today!

MICHAEL COOPER, REALTOR®

MCooper@TomSmithLand.com

662.268.6333 office | 662.285.8686 cell

135 Jefferson Street | Starkville, MS 39759



Expect More. Get More.

TomSmithLandandHomes.com

Information is believed to be accurate but not guaranteed.



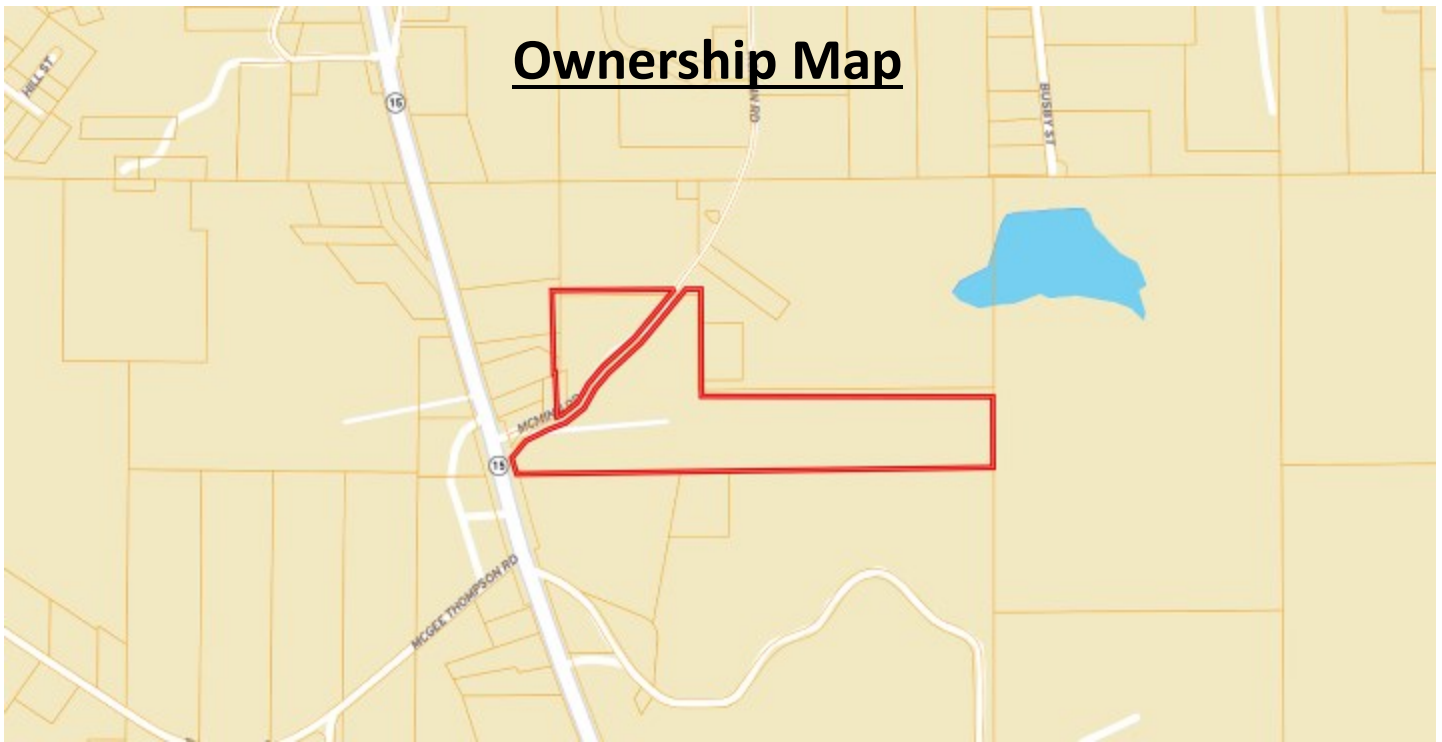
Call me today!

MICHAEL COOPER, REALTOR®
MCooper@TomSmithLand.com
662.268.6333 office | 662.285.8686 cell
135 Jefferson Street | Starkville, MS 39759

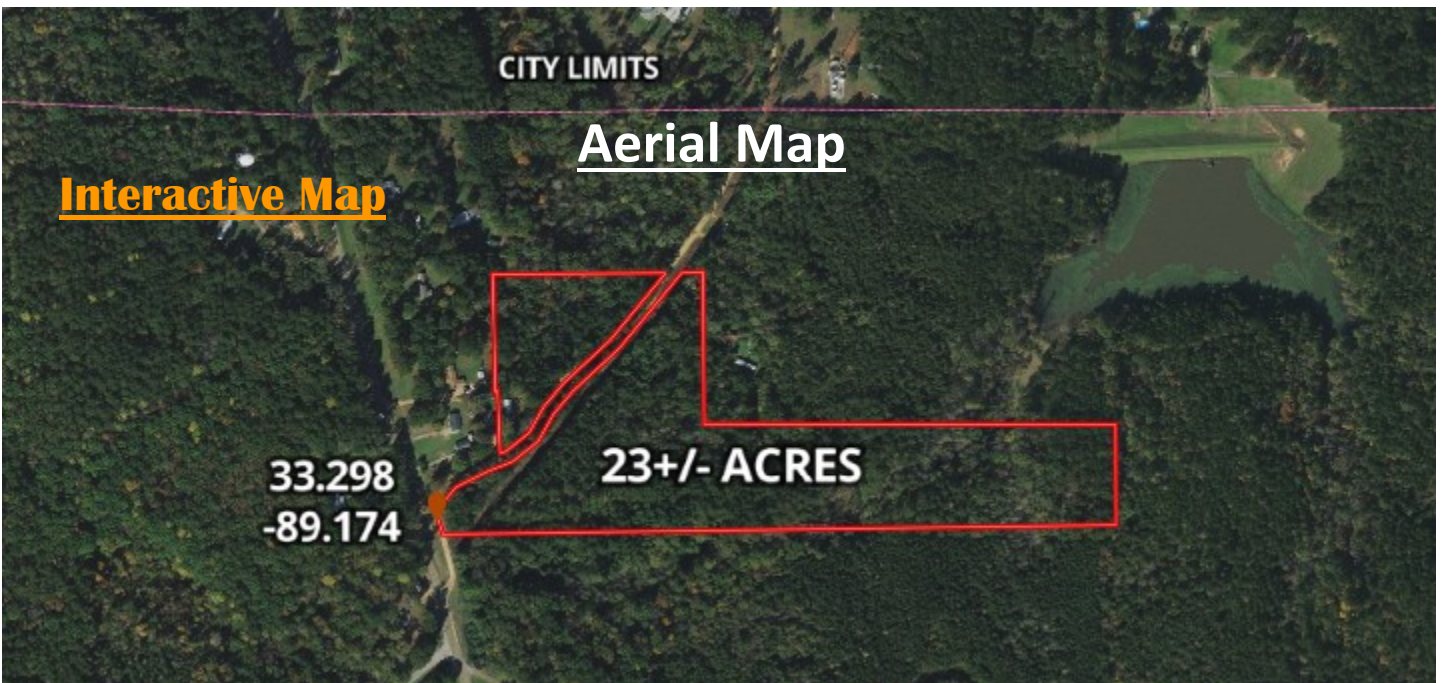


TomSmithLandandHomes.com

Information is believed to be accurate but not guaranteed.



Ownership Map



Aerial Map

Interactive Map

CITY LIMITS

33.298
-89.174

23+/- ACRES



Call me today!

MICHAEL COOPER, REALTOR®

MCooper@TomSmithLand.com

662.268.6333 office | 662.285.8686 cell

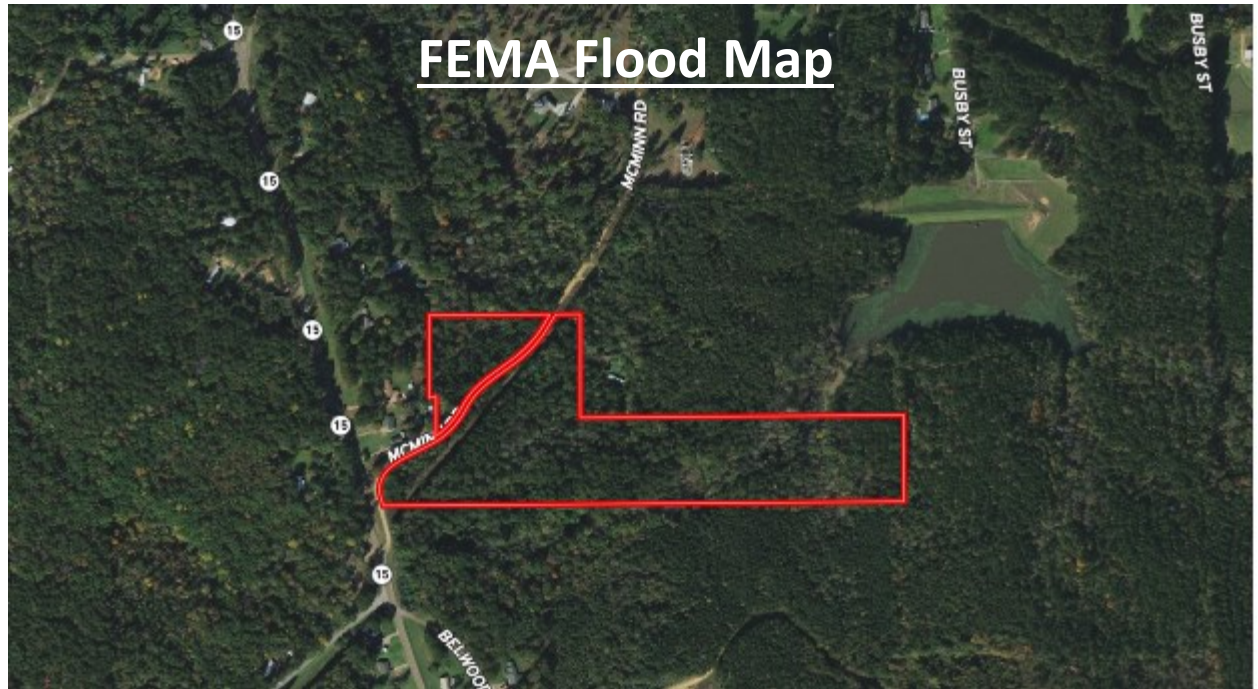
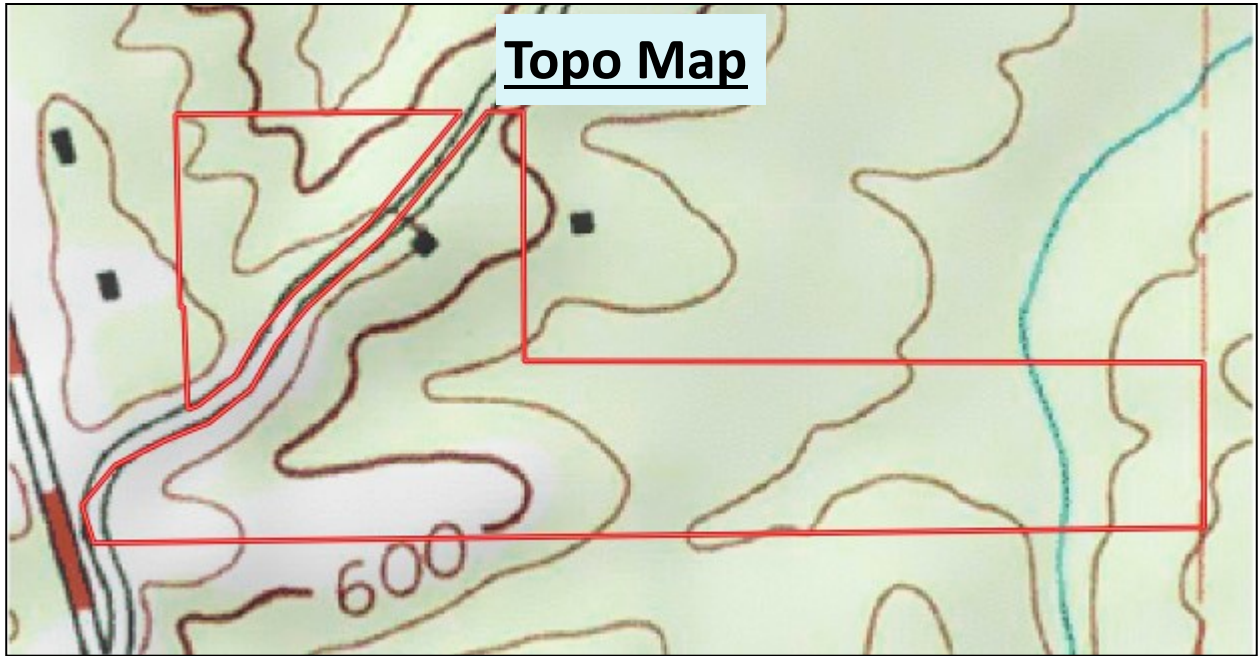
135 Jefferson Street | Starkville, MS 39759



Expect More. Get More.

TomSmithLandandHomes.com

Information is believed to be accurate but not guaranteed.



Call me today!

MICHAEL COOPER, REALTOR®

MCooper@TomSmithLand.com

662.268.6333 office | 662.285.8686 cell

135 Jefferson Street | Starkville, MS 39759



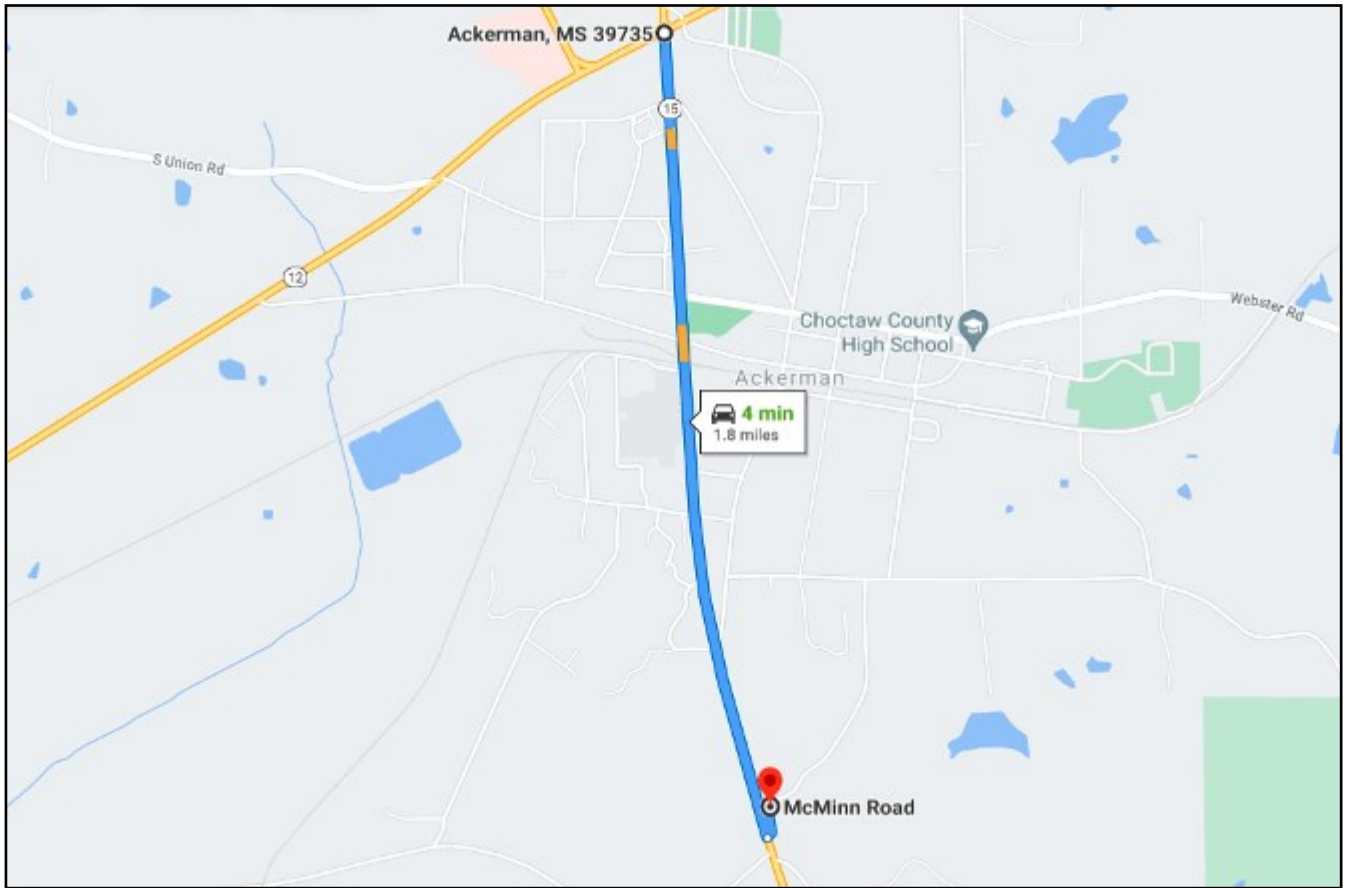
Expect More. Get More.

TomSmithLandandHomes.com

Information is believed to be accurate but not guaranteed.



Directional Map



Directions: From the intersection of Hwy 15 and Hwy 12 in Ackerman, drive south on Hwy 15 for 1.5 miles. Then, turn left onto McMinn Road and the destination will be on the right.

[GOOGLE MAPS LINK](#)



Call me today!

MICHAEL COOPER, REALTOR®

MCooper@TomSmithLand.com

662.268.6333 office | 662.285.8686 cell

135 Jefferson Street | Starkville, MS 39759



Expect More. Get More.

TomSmithLandandHomes.com

Information is believed to be accurate but not guaranteed.