



# Spacious Home on 0.81+/- Acres Pike County, MS



1100 Park Drive Ext McComb, MS 39648

Looking for a spacious home with a peaceful setting in Pike County, MS...this could be the one! This move-in-ready home is situated on .81+/- acres just outside the city limits of McComb, on Park Drive Ext. The four bedroom, two bath home has been well-kept and features a master suite on one end and three bedrooms and one bath on the other.

Outdoors, the workshop, fruit trees and in-ground swimming pool will capture your attention! The pool needs a new vinyl liner and then it will be ready for all of the sun and fun you can handle. Looking to host a big family? This is your spot, so invite the entire family and start making memories. Act fast as this one is sure to go quickly! Call Eli today to schedule a viewing!

Directions from the McComb, MS exit on I-55 South: Travel one mile west on Hwy 24. Turn left onto Park Drive Ext and the house will be immediately on your left.



*Call me today!*

**ELI FERGUSON**, REALTOR®  
Eli@TomSmithLand.com  
601.990.5070 office | 601.757.7117 cell



Expect More. Get More.

**TomSmithLandandHomes.com**

Information is believed to be accurate but not guaranteed.





LandReport  
2011-2020  
AMERICAN  
BEST  
BROKERAGES

Proud to be  
C2EX  
endorsed!

*Call me today!*

**ELI FERGUSON, REALTOR®**  
Eli@TomSmithLand.com  
601.990.5070 office | 601.757.7117 cell



**TomSmithLandandHomes.com**

Information is believed to be accurate but not guaranteed.





LandReport  
2011-2020  
AMERICAN  
BEST  
BROKERAGES

Proud to be  
C2EX  
endorsed!

*Call me today!*

**ELI FERGUSON, REALTOR®**  
Eli@TomSmithLand.com  
601.990.5070 office | 601.757.7117 cell



**TomSmithLandandHomes.com**

Information is believed to be accurate but not guaranteed.



## Aerial Map



LandReport  
2011-2020  
AMERICA'S  
BEST  
BROKERAGES

Proud to be  
C2EX  
endorsed!

*Call me today!*

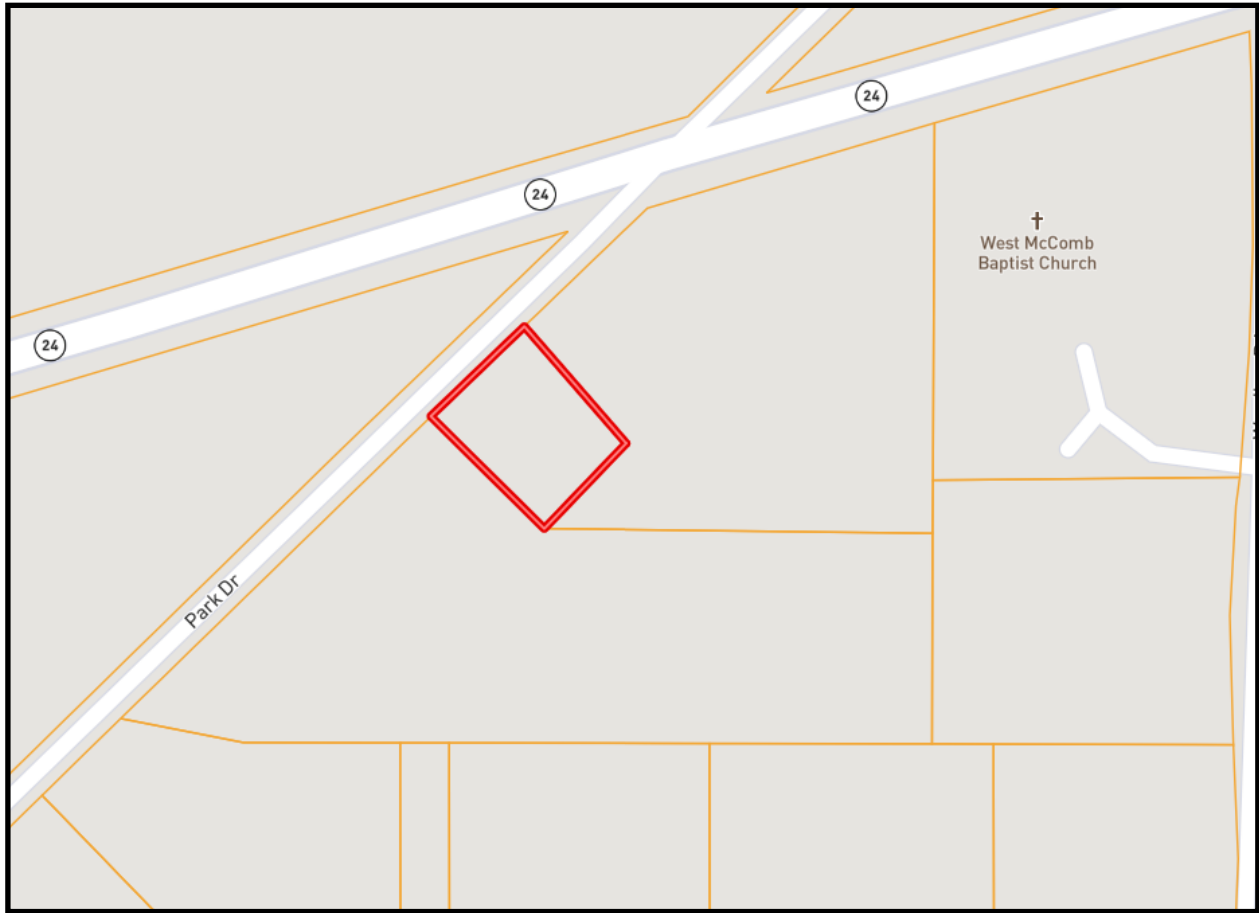
**ELI FERGUSON**, REALTOR®  
Eli@TomSmithLand.com  
601.990.5070 office | 601.757.7117 cell



**TomSmithLandandHomes.com**

Information is believed to be accurate but not guaranteed.





## Ownership Map



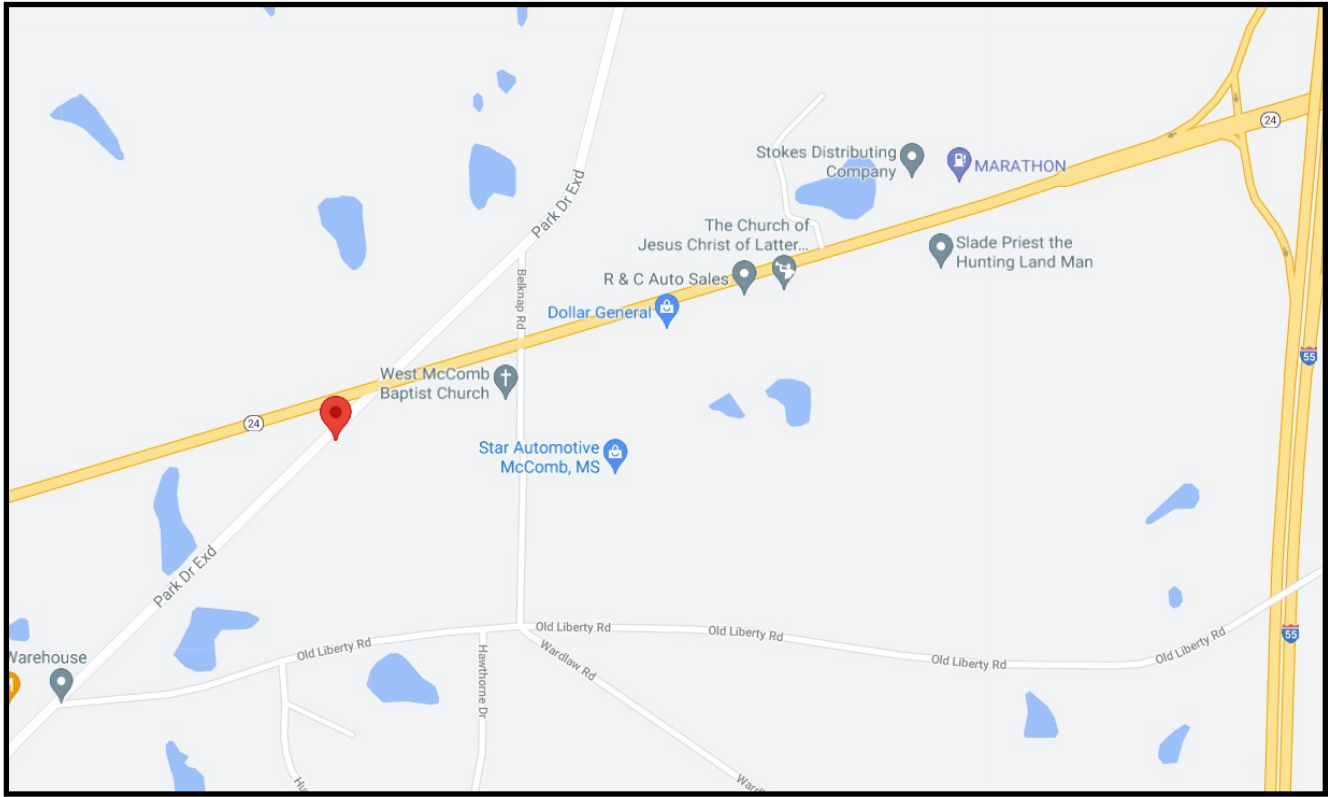
*call me today!*

**ELI FERGUSON**, REALTOR®  
Eli@TomSmithLand.com  
601.990.5070 office | 601.757.7117 cell



**TomSmithLandandHomes.com**

Information is believed to be accurate but not guaranteed.



## Directional Map

1100 Park Drive Ext McComb, MS 39648

Directions from the McComb, MS exit on I-55 South: Travel one mile west on Hwy 24. Turn left onto Park Drive Ext and the house will be immediately on your left.



*call me today!*

**ELI FERGUSON**, REALTOR®  
 Eli@TomSmithLand.com  
 601.990.5070 office | 601.757.7117 cell



**TomSmithLandandHomes.com**

Information is believed to be accurate but not guaranteed.