



Updated Home on a Corner Lot Lincoln County, MS



104 Lucas Street Brookhaven, MS 39601

You must come see this cute two bedroom, one bath home situated on a .21 +/- acre corner lot with a fenced-in backyard in Lincoln County, MS. The inside of the house is updated with vinyl flooring and a remodeled bathroom. Enjoy coffee with a friend on the cozy front porch and then your favorite book on the spacious back deck which offers curtains for privacy. This move-in ready home is located on the corner of Lucas Street and Powell Street in Brookhaven, convenient to I-55. Call Nicole today to schedule a viewing!

Directions from Exit 42 off I-55, in Brookhaven, MS: Travel east on Union Street into town and turn left on Industrial Park Road. At the second red light, turn right on N Jackson Street. Turn left on Powell Street immediately past Handy Mart on the left. Travel two blocks and turn left onto Lucas Street. The house is on the right.



call me today!

NICOLE NEWELL, REALTOR®
Nicole@TomSmithHomes.com
601.990.5070 **office** | 601.754.3766 **cell**



TomSmithLandandHomes.com

Information is believed to be accurate but not guaranteed.



2010-2021
AMERICA'S
BEST
BROKERAGES

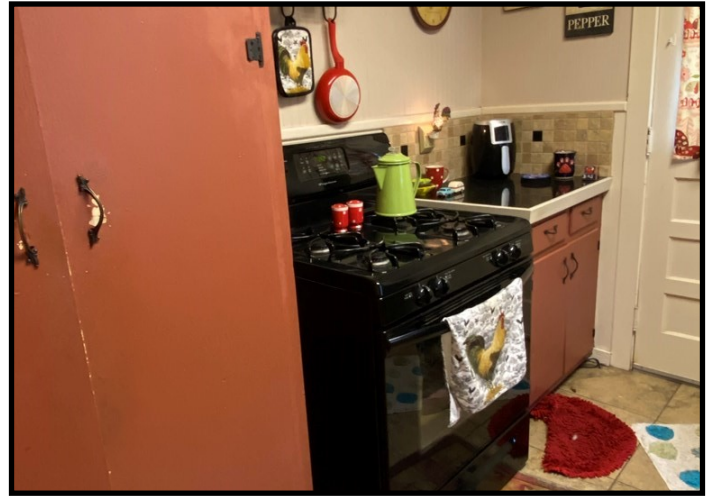
Call me today!

NICOLE NEWELL, REALTOR®
Nicole@TomSmithHomes.com
601.990.5070 office | 601.754.3766 cell



TomSmithLandandHomes.com

Information is believed to be accurate but not guaranteed.



2010-2021
AMERICA'S
BEST
BROKERAGES

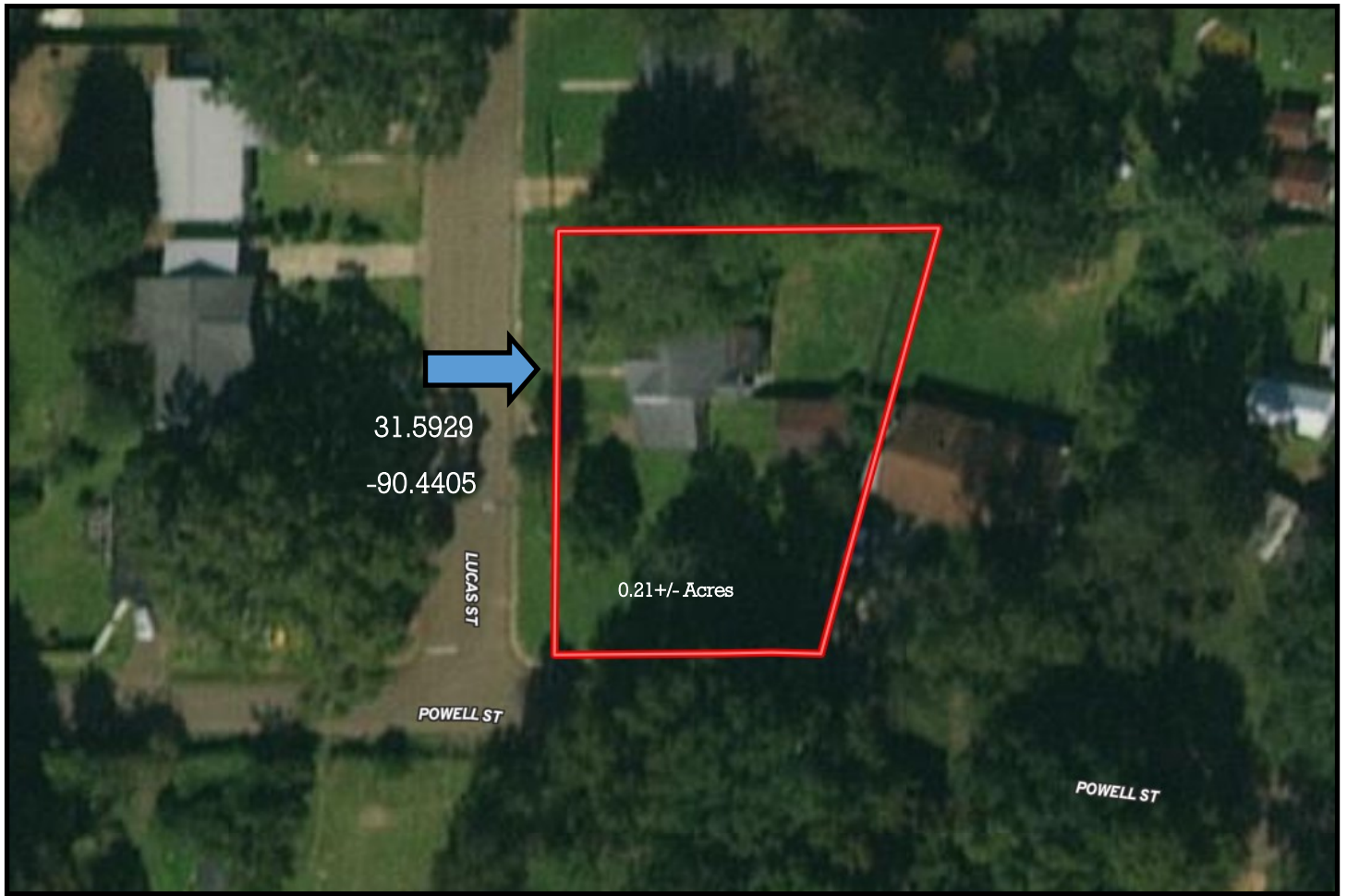
Call me today!

NICOLE NEWELL, REALTOR®
Nicole@TomSmithHomes.com
601.990.5070 office | 601.754.3766 cell



TomSmithLandandHomes.com

Information is believed to be accurate but not guaranteed.



Aerial Map



2010-2021
AMERICA'S
BEST
BROKERAGES

call me today!

NICOLE NEWELL, REALTOR®

Nicole@TomSmithHomes.com

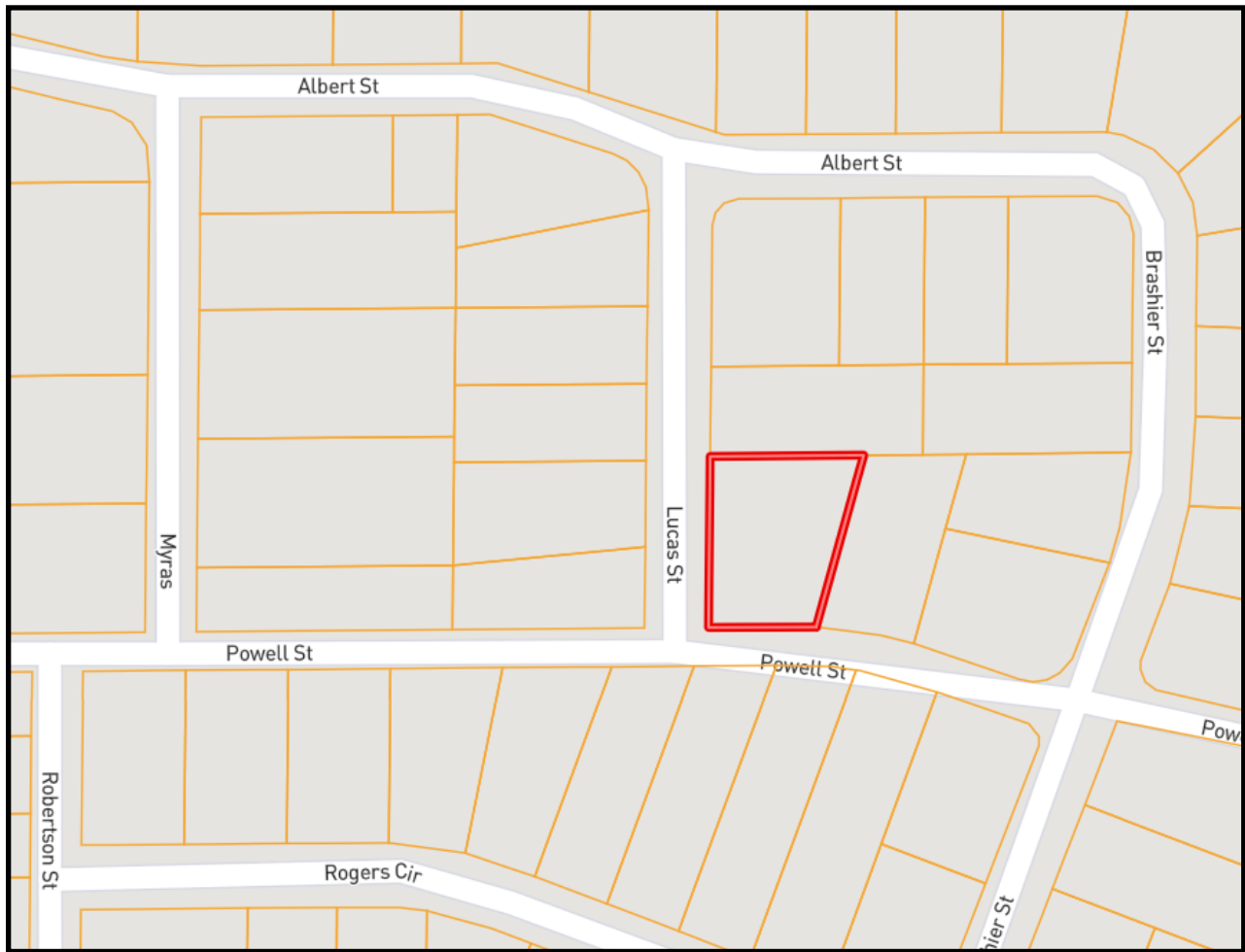
601.990.5070 office | 601.754.3766 cell



Expect More. Get More.

TomSmithLandandHomes.com

Information is believed to be accurate but not guaranteed.



Ownership Map



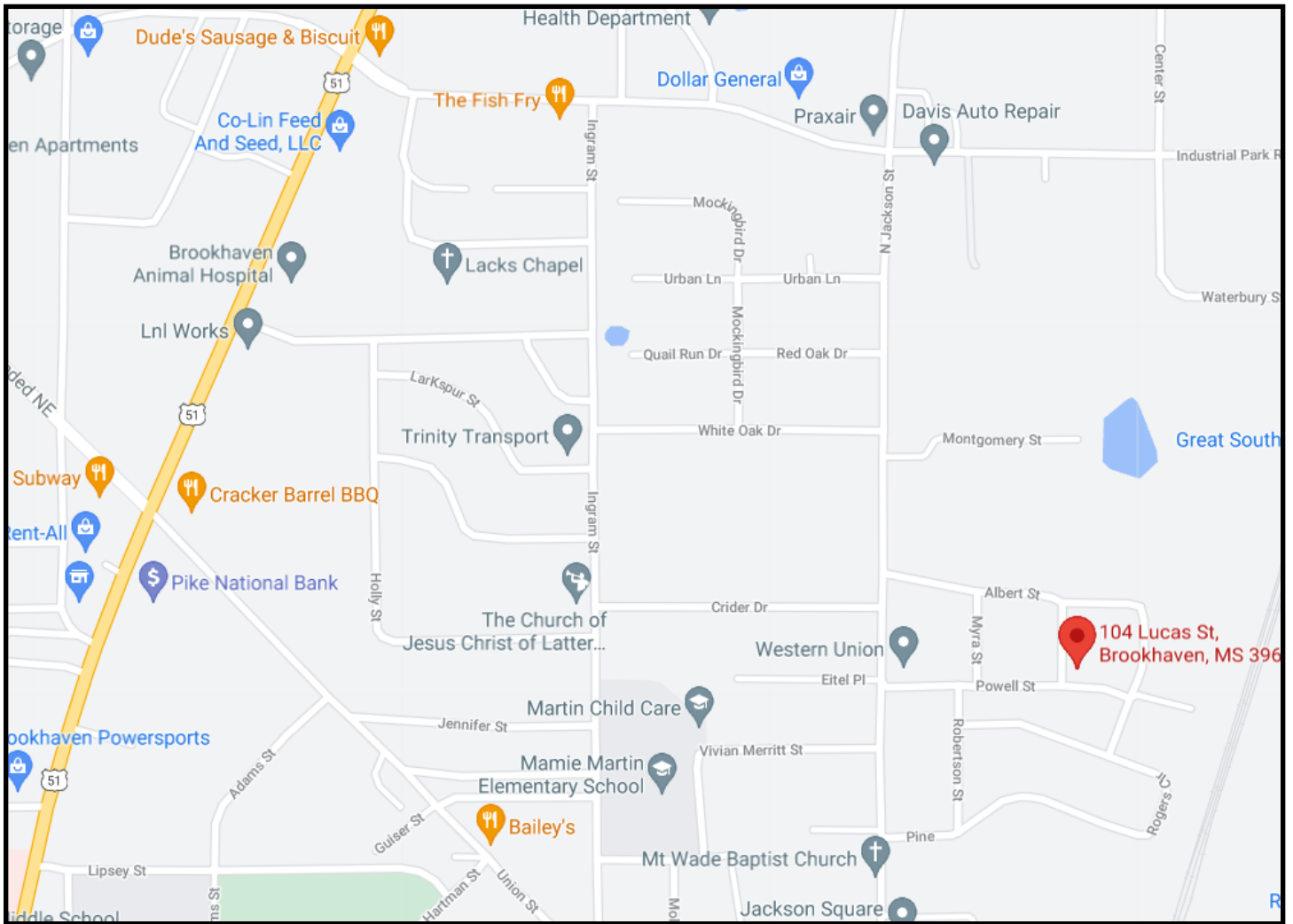
call me today!

NICOLE NEWELL, REALTOR®
 Nicole@TomSmithHomes.com
 601.990.5070 office | 601.754.3766 cell



TomSmithLandandHomes.com

Information is believed to be accurate but not guaranteed.



Directional Map

Address: 104 Lucas Street Brookhaven, MS 39601



Directions from Exit 42 off I-55, in Brookhaven, MS: Travel east on Union Street into town and turn left on Industrial Park Road. At the second red light, turn right on N Jackson Street. Turn left on Powell Street immediately past Handy Mart on the left. Travel two blocks and turn left onto Lucas Street. The house is on the right.



call me today!

NICOLE NEWELL, REALTOR®
 Nicole@TomSmithHomes.com
 601.990.5070 office | 601.754.3766 cell



TomSmithLandandHomes.com

Information is believed to be accurate but not guaranteed.