

FIXER-UPPER HOME

2.5± Acres in Smith County, MS

4323 SCR 52 LOUIN, MS 39338

\$225,000



Are you looking for country living? You will want to check this home out! Located on 2.5± acres in Smith County, MS, and the Raleigh School District, this 3,811 sq. ft. home features three bedrooms, two bathrooms, and a large multipurpose room that could be a playroom, pool room, man cave, or whatever you want to make it. The home also has a big kitchen with an island, an adjoining breakfast room, and a family room. The house does need some updating, but you can make it exactly how you want it with a bit of work. Call Chad to schedule your showing today!



call me today!

CHAD WILSON, REALTOR®

Chad@TomSmithLand.com

601.898.2772 office | 601.750.1970 cell



TomSmithLandandHomes.com

Information is believed to be accurate but not guaranteed.



CHAD WILSON, REALTOR®
Chad@TomSmithLand.com
601.898.2772 office | 601.750.1970 cell



TomSmithLandandHomes.com

Information is believed to be accurate but not guaranteed.



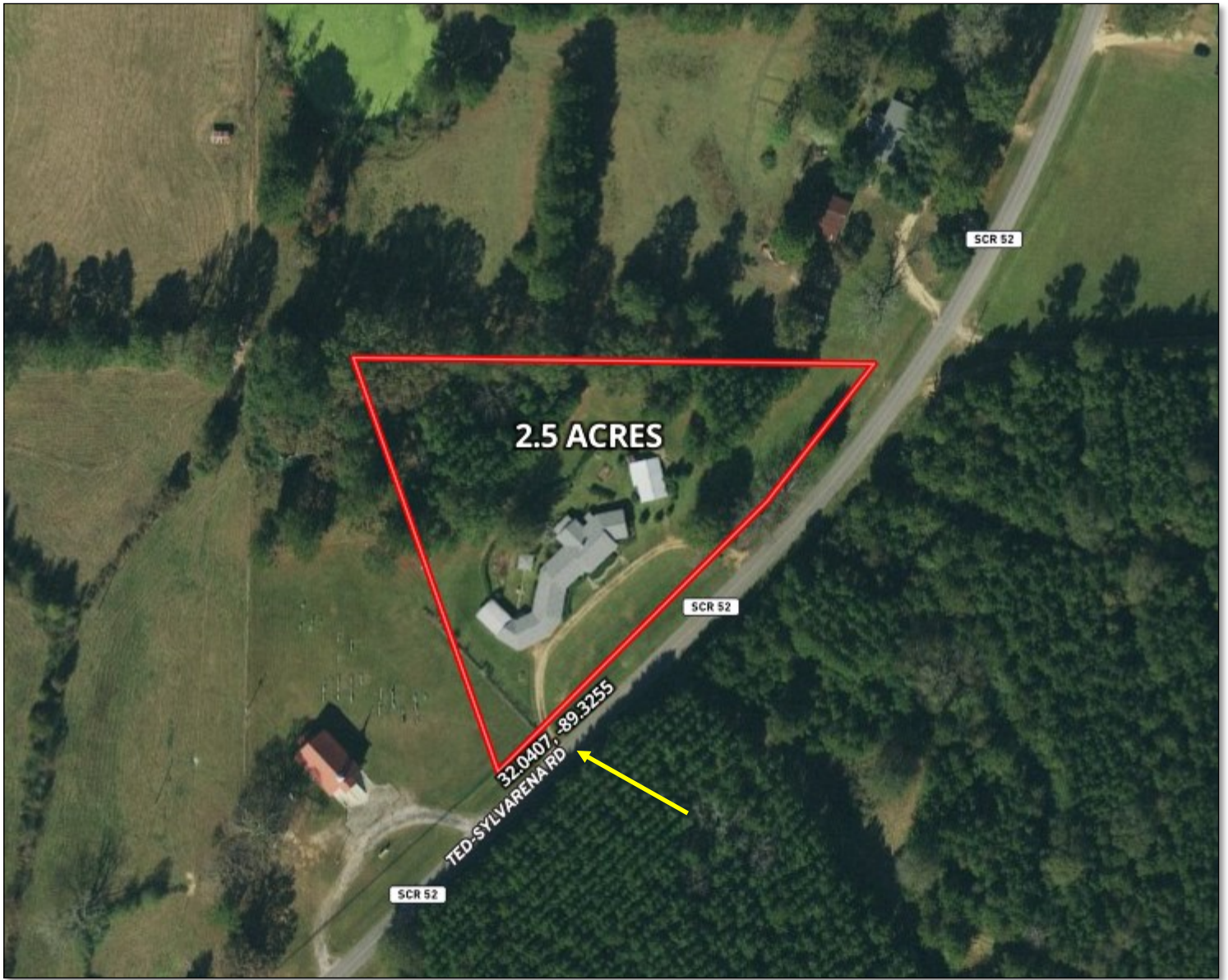
CHAD WILSON, REALTOR®
 Chad@TomSmithLand.com
 601.898.2772 office | 601.750.1970 cell



Expect More. Get More.

TomSmithLandandHomes.com

Information is believed to be accurate but not guaranteed.



AERIAL MAP

Click [HERE](#) for an Interactive Map

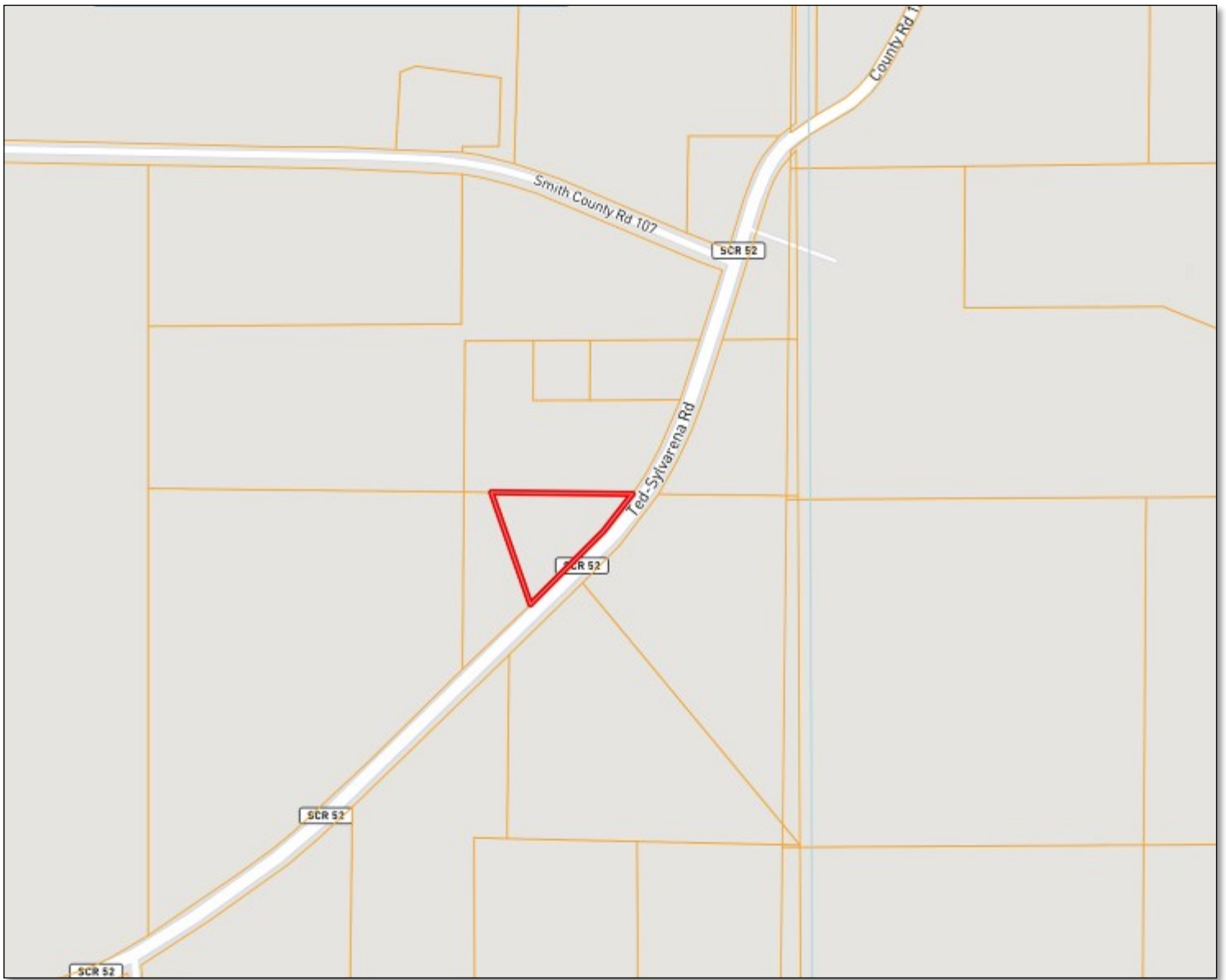


CHAD WILSON, REALTOR®
Chad@TomSmithLand.com
601.898.2772 office | 601.750.1970 cell



TomSmithLandandHomes.com

Information is believed to be accurate but not guaranteed.



OWNERSHIP MAP

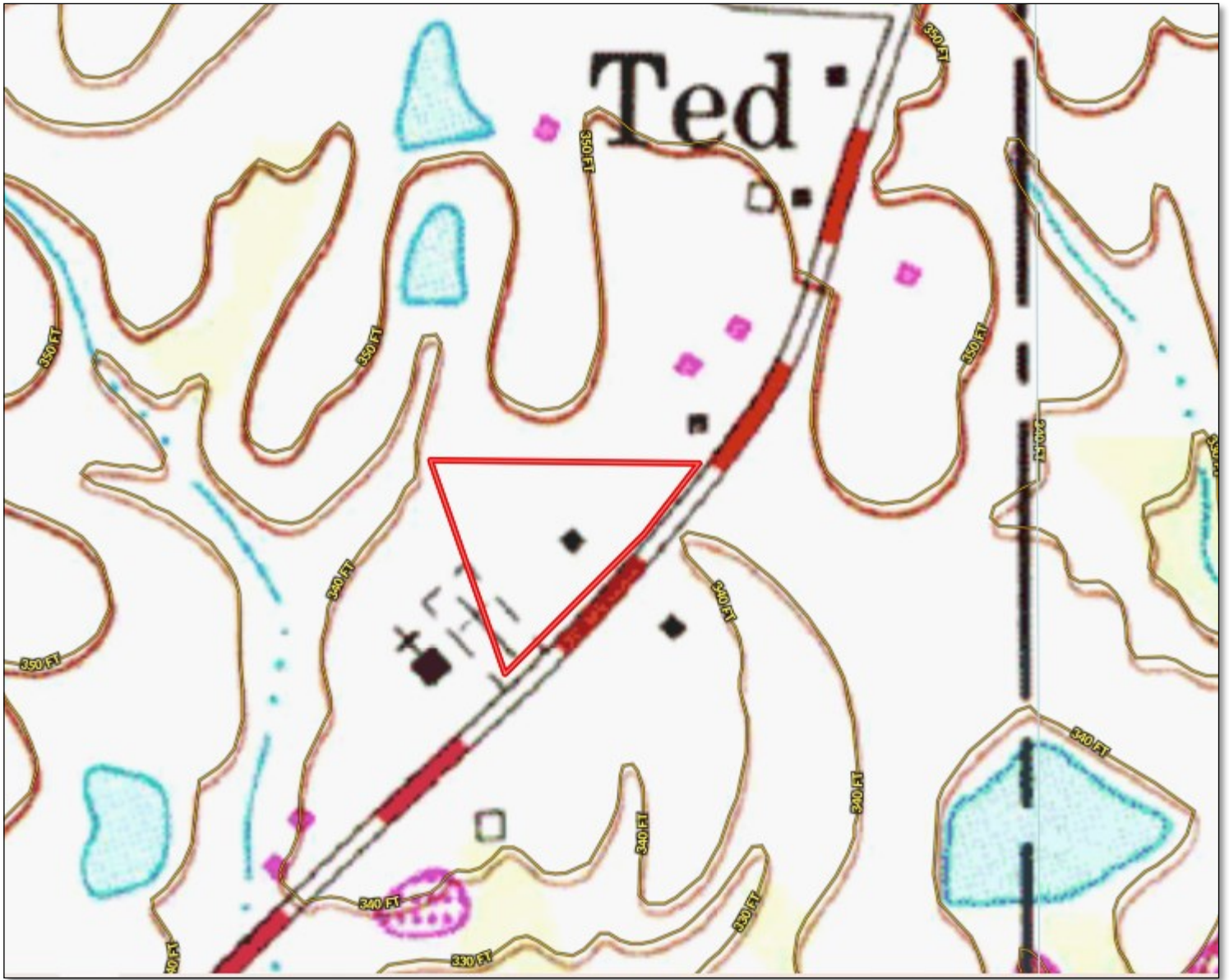


CHAD WILSON, REALTOR®
Chad@TomSmithLand.com
601.898.2772 office | 601.750.1970 cell



TomSmithLandandHomes.com

Information is believed to be accurate but not guaranteed.



TOPO MAP

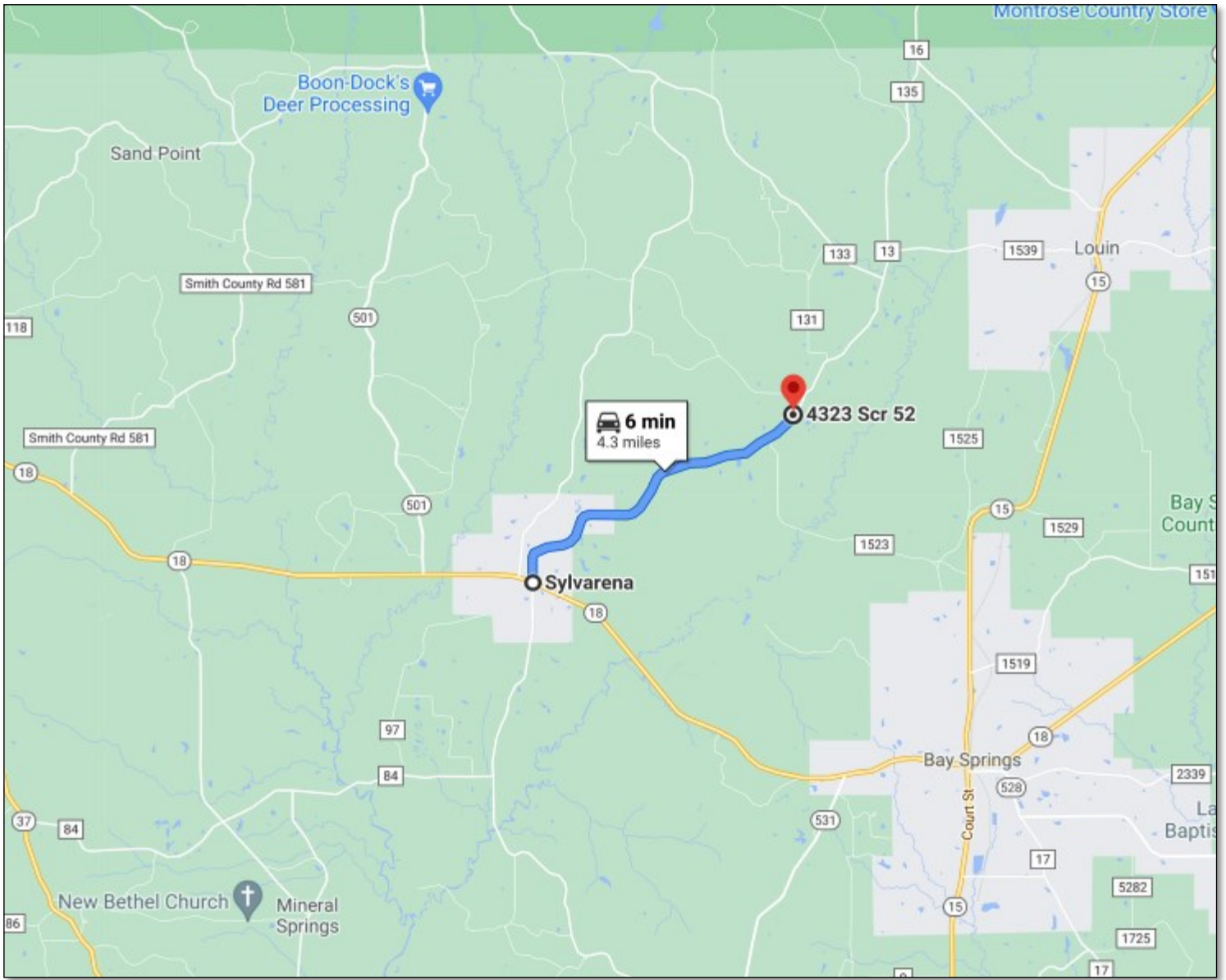


CHAD WILSON, REALTOR®
Chad@TomSmithLand.com
601.898.2772 office | 601.750.1970 cell



TomSmithLandandHomes.com

Information is believed to be accurate but not guaranteed.



DIRECTIONAL MAP

**DIRECTIONS FROM THE INTERSECTION OF HWY 18 AND SCR 52 IN SYLVARENA, MS:
TRAVEL SCR 52 FOR 4.3 MILES. THE PROPERTY WILL BE ON YOUR LEFT.
[4323 SCR 52 LOUIN, MS 39338](#)**



call me today!

CHAD WILSON, REALTOR®

Chad@TomSmithLand.com

601.898.2772 office | 601.750.1970 cell



TomSmithLandandHomes.com

Information is believed to be accurate but not guaranteed.