

Outstanding Development Tract

10.7+/- Acres in Oktibbeha County, MS



\$275,000

Looking for a place to start your new business in thriving Starkville, MS? This 10.7+/- acre tract is located on Old Hwy 25, in Oktibbeha County. The property is in the rapidly growing south Starkville area roughly 3 miles south of Hwy 12. In just the last year, several new businesses and residential developments have popped up in this area. The land is open ground with a nice topography, which would make development fairly easy. This tract is zoned C R (commercial rural) under the new Starkville zoning plan. Take advantage of the high traffic count and great visibility for your business. With the prime location and the new, ongoing development all around, this is a great property! Call Michael today!

Directions: From the intersection of Hwy 12 and Louisville Street in Starkville drive south on Louisville Street/ Old Hwy 25 for 3 miles and the destination will be on your left. [GOOGLE MAPS LINK](#)



Call me today!

MICHAEL COOPER, REALTOR®
Mcooper@TomSmithLand.com
662.268.6333 **office** | 662.285.8686 **cell**



TomSmithLandandHomes.com

Information is believed to be accurate but not guaranteed.



Call me today!

MICHAEL COOPER, REALTOR®
Mcooper@TomSmithLand.com
662.268.6333 **office** | 662.285.8686 **cell**



TomSmithLandandHomes.com

Information is believed to be accurate but not guaranteed.



Call me today!

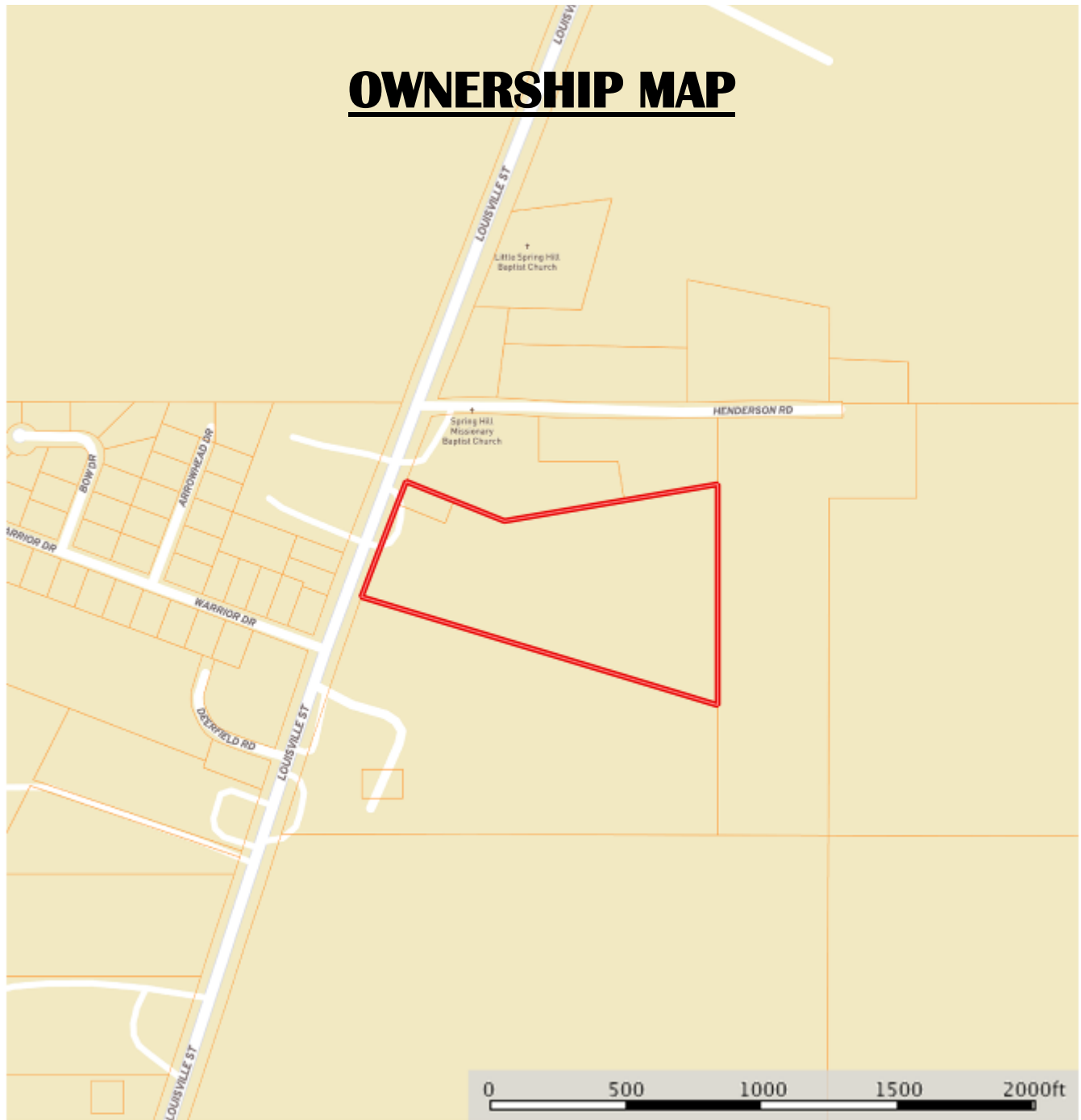
MICHAEL COOPER, REALTOR®
 Mcooper@TomSmithLand.com
 662.268.6333 office | 662.285.8686 cell



TomSmithLandandHomes.com

Information is believed to be accurate but not guaranteed.

OWNERSHIP MAP



Boundary



LandReport
2011-2022
AMERICA'S
BEST
BROKERAGES

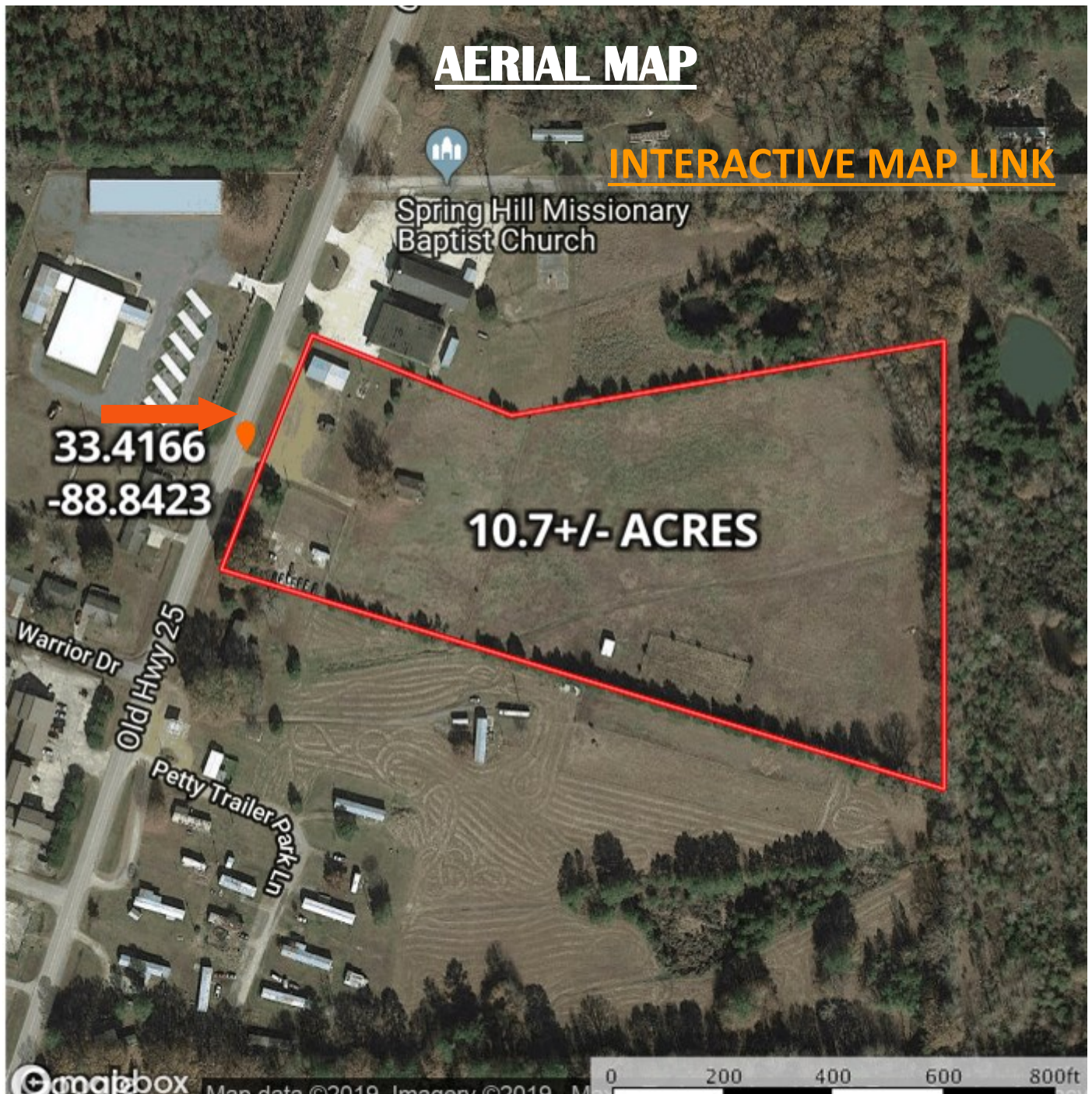
Call me today!

MICHAEL COOPER, REALTOR®
Mcooper@TomSmithLand.com
662.268.6333 office | 662.285.8686 cell



TomSmithLandandHomes.com

Information is believed to be accurate but not guaranteed.



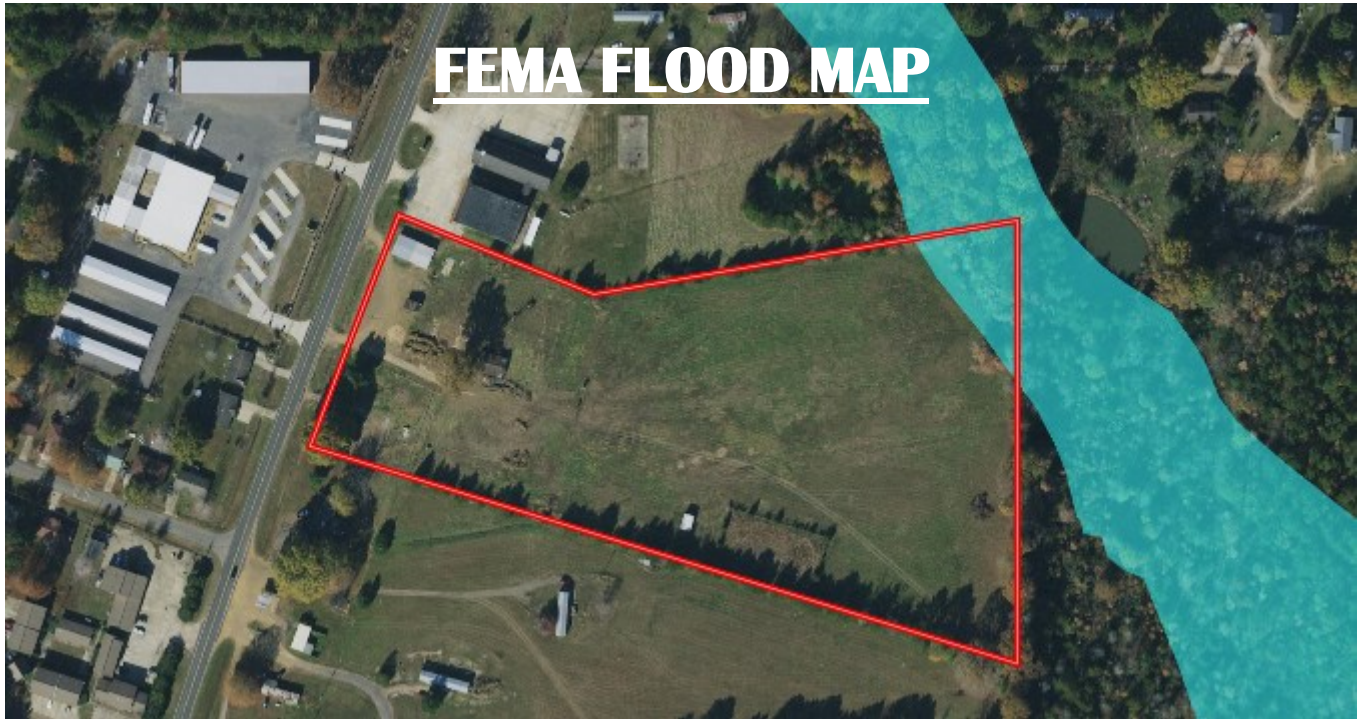
Call me today!

MICHAEL COOPER, REALTOR®
Mcooper@TomSmithLand.com
662.268.6333 office | 662.285.8686 cell



TomSmithLandandHomes.com

Information is believed to be accurate but not guaranteed.



FEMA FLOOD MAP



TOPO MAP



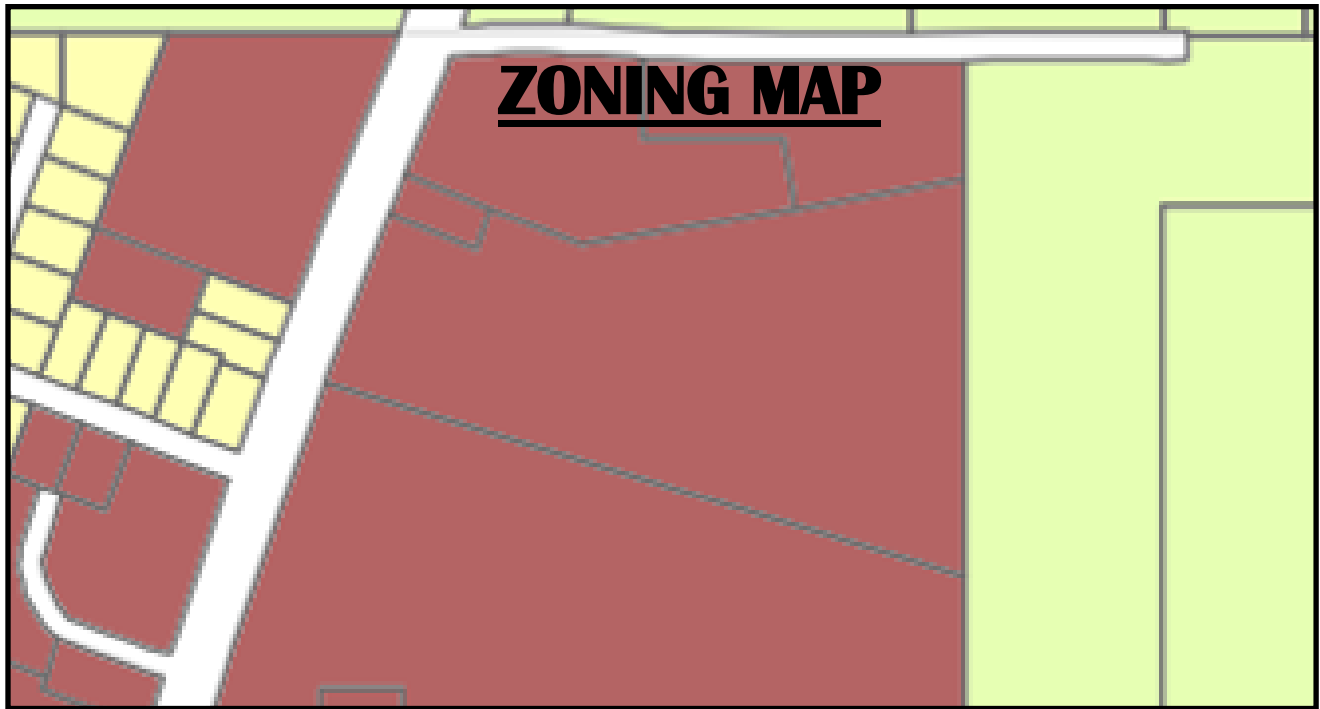
Call me today!

MICHAEL COOPER, REALTOR®
Mcooper@TomSmithLand.com
662.268.6333 **office** | 662.285.8686 **cell**



TomSmithLandandHomes.com

Information is believed to be accurate but not guaranteed.



C R - Commercial Rural Zoning



SOIL CODE	SOIL DESCRIPTION	ACRES	%	CAP
Se	Sessum silty clay loam	11.2	100.0	4w
TOTALS		11.2	100%	4.0



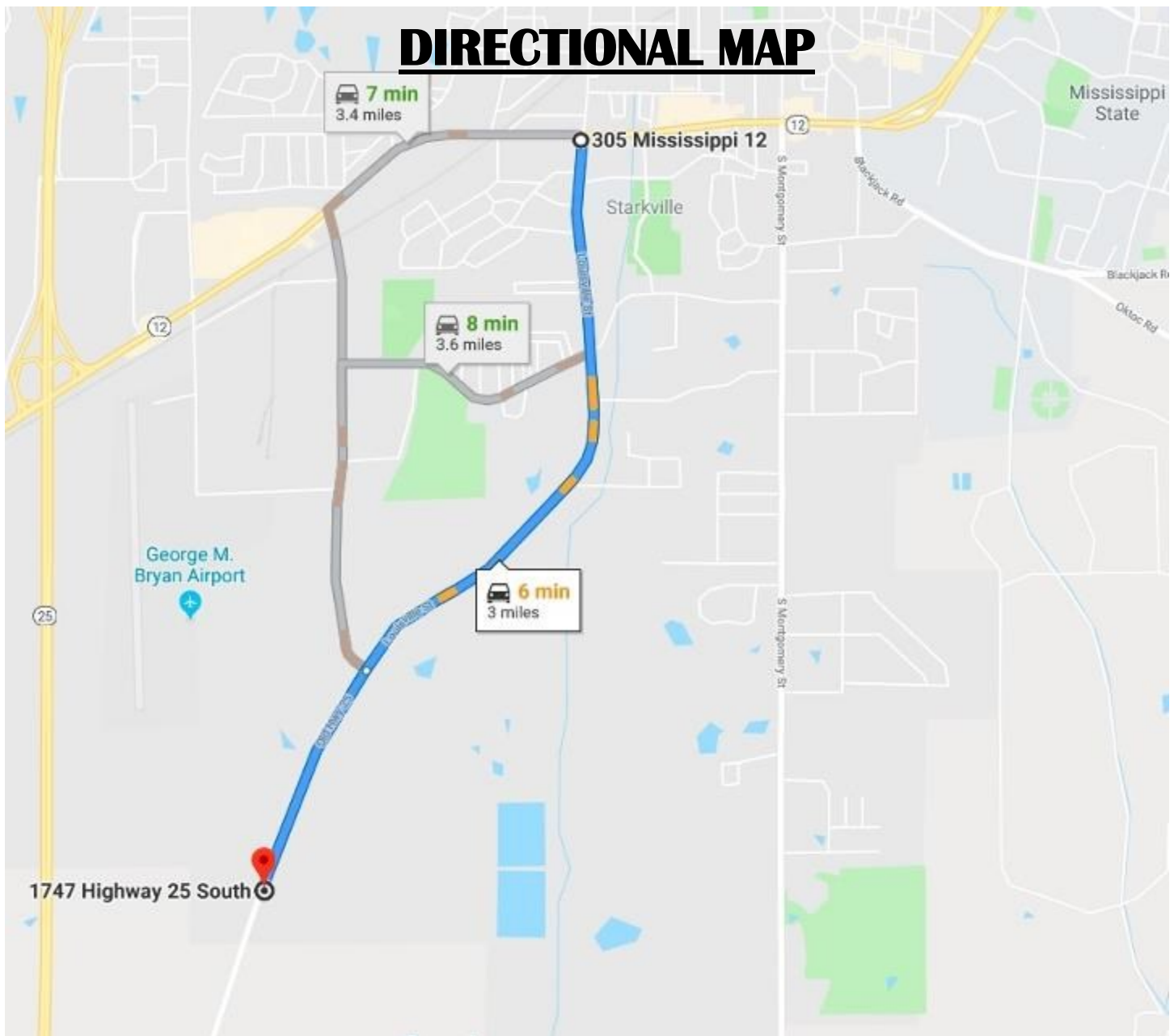
Call me today!

MICHAEL COOPER, REALTOR®
 Mcooper@TomSmithLand.com
 662.268.6333 office | 662.285.8686 cell



TomSmithLandandHomes.com

Information is believed to be accurate but not guaranteed.



Directions: From the intersection of Hwy 12 and Louisville Street in Starkville drive south on Louisville Street/ Old Hwy 25 for 3 miles and the destination will be on your left. [**GOOGLE MAPS LINK**](#)



Call me today!

MICHAEL COOPER, REALTOR®
Mcooper@TomSmithLand.com
662.268.6333 **office** | 662.285.8686 **cell**



TomSmithLandandHomes.com

Information is believed to be accurate but not guaranteed.