

Investment Property

0.22+/- Acres in Sunflower County, MS



This investment property is located on Highway 82 West in Sunflower County, MS, and offers 100 feet of road frontage in Indianola. This property features .22+/- acres with a 1,800 +/- square foot retail store with plenty of parking. A commercial billboard sits on the west end for additional income. Daily traffic counts on Highway 82 in Indianola can top 20,000 vehicles per day! The property is 30 miles from Greenwood, MS, and 23 miles from Greenville, MS. Seller will consider dividing. Capitalize on this excellent investment. Call Emerson today!

Directions from Greenville, MS: Travel east on Hwy 82 for approximately 23.4 miles. The property will be on the left.

Directions from Greenwood, MS: Travel west on Hwy 82 for approximately 30 miles. The property will be on the right.



**EMERSON
LOVELACE**

REALTOR®

Office: 662.441.2500

Cell: 601.715.3302

Emerson@TomSmithLand.com



A Real Estate Expert You Can Trust

TomSmithLandandHomes.com

Information is believed to be accurate but not guaranteed.





**EMERSON
LOVELACE**

REALTOR®
Office: 662.441.2500
Cell: 601.715.3302
Emerson@TomSmithLand.com



A Real Estate Expert You Can Trust

TomSmithLandandHomes.com

Information is believed to be accurate but not guaranteed.





**EMERSON
LOVELACE**

REALTOR®
Office: 662.441.2500
Cell: 601.715.3302
Emerson@TomSmithLand.com



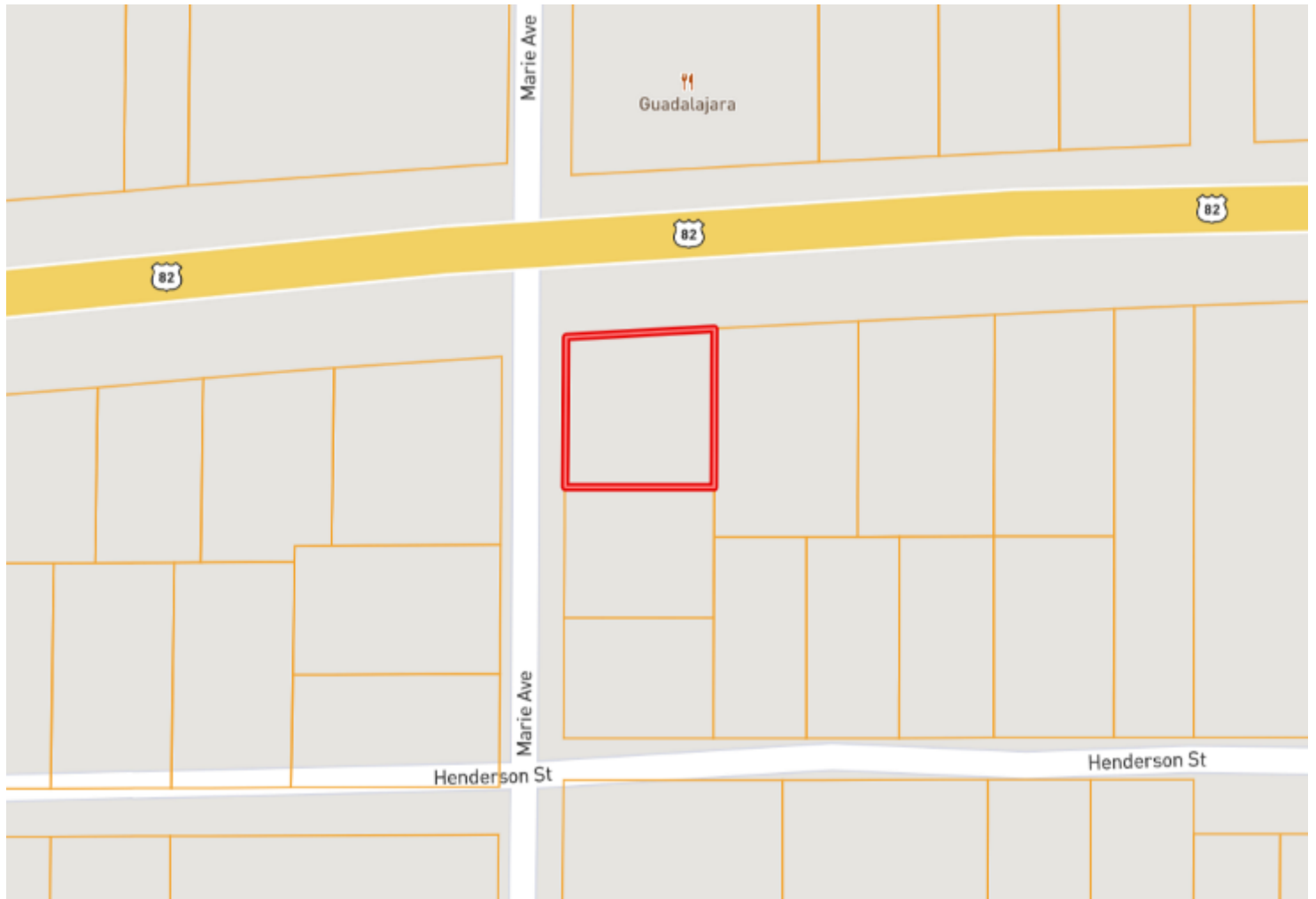
A Real Estate Expert You Can Trust

TomSmithLandandHomes.com

Information is believed to be accurate but not guaranteed.



OWNERSHIP MAP



EMERSON
LOVELACE

REALTOR®

Office: 662.441.2500

Cell: 601.715.3302

Emerson@TomSmithLand.com



A Real Estate Expert You Can Trust

TomSmithLandandHomes.com

Information is believed to be accurate but not guaranteed.



AERIAL MAP



[LandId Map Link](#)



EMERSON
LOVELACE

REALTOR®

Office: 662.441.2500

Cell: 601.715.3302

Emerson@TomSmithLand.com



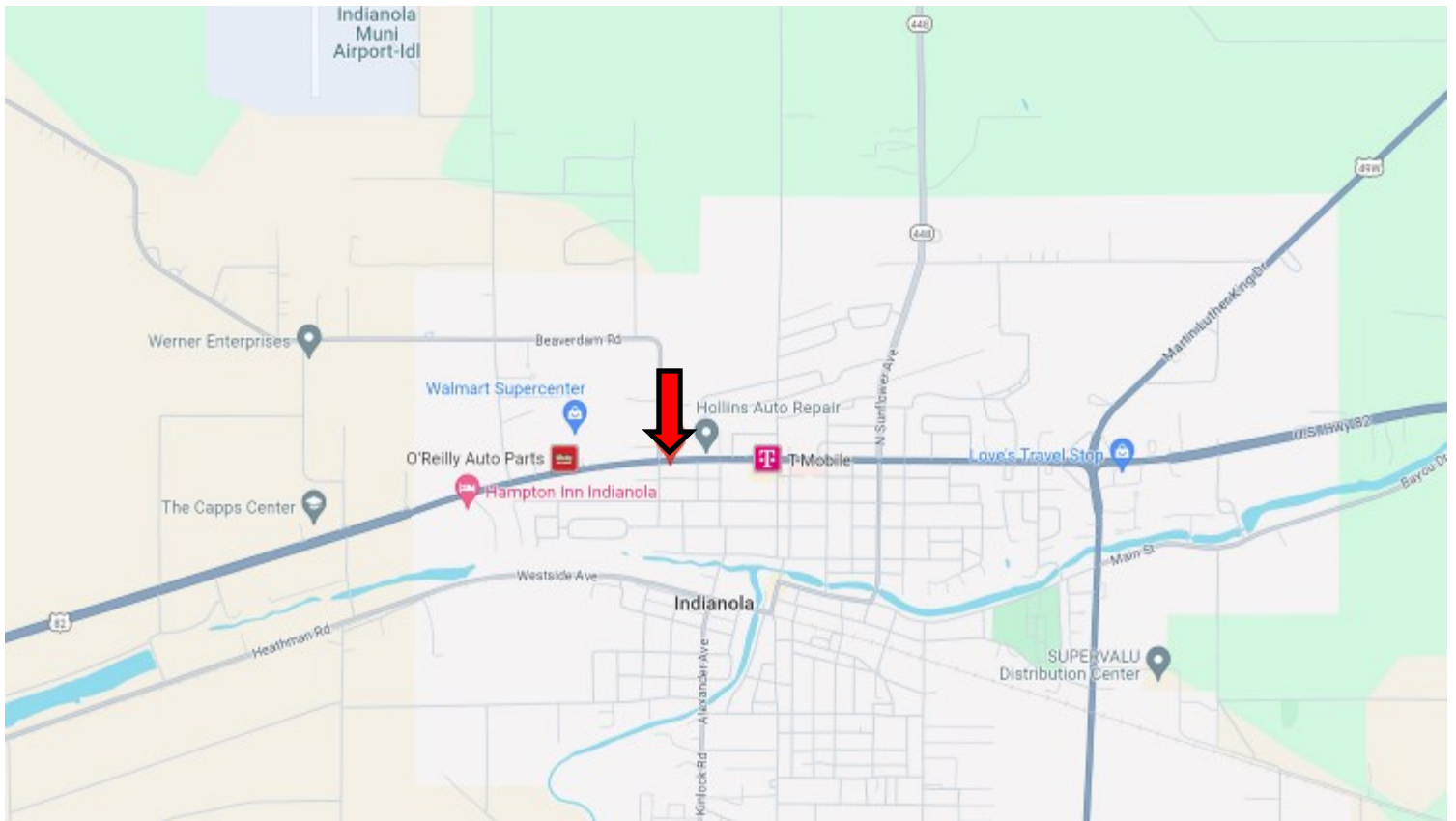
A Real Estate Expert You Can Trust

TomSmithLandandHomes.com

Information is believed to be accurate but not guaranteed.



DIRECTIONAL MAP



Directions from Greenville, MS: Travel east on Hwy 82 for approximately 23.4 miles. The property will be on the left.

Directions from Greenwood, MS: Travel west on Hwy 82 for approximately 30 miles. The property will be on the right.

GOOGLE MAP LINK



EMERSON
LOVELACE

REALTOR®

Office: 662.441.2500

Cell: 601.715.3302

Emerson@TomSmithLand.com



A Real Estate Expert You Can Trust

TomSmithLandandHomes.com

Information is believed to be accurate but not guaranteed.

