

Investment Property

0.537+/- Acres in Sunflower County, MS



Located on Highway 82 West in Sunflower County, MS, this investment property offers 175 feet of road frontage in Indianola. Two separate land parcels totaling .537+/- acres make up this available property. A 600+/- square foot metal shop is on site with electricity, heating and cooling system, bathroom and a nice canopy for additional outdoor space. The eastern parcel is currently vacant, ready for your business. Daily traffic counts on Highway 82 in Indianola can top 20,000 vehicles per day! The property is 30 miles from Greenwood and 23 miles from Greenville. Capitalize on this great investment, call Emerson today!

Directions from Greenville, MS: Travel east on Hwy 82 for approximately 23.4 miles and the destination is on the left.

Directions from Greenwood, MS: Travel west on Hwy 82 for approximately 30 miles and the destination is on the right.



Call me today!

EMERSON LOVELACE, REALTOR®
Emerson@TomSmithLand.com
662.441.2500 office | 601.715.3302 cell



TomSmithLandandHomes.com

Information is believed to be accurate but not guaranteed.



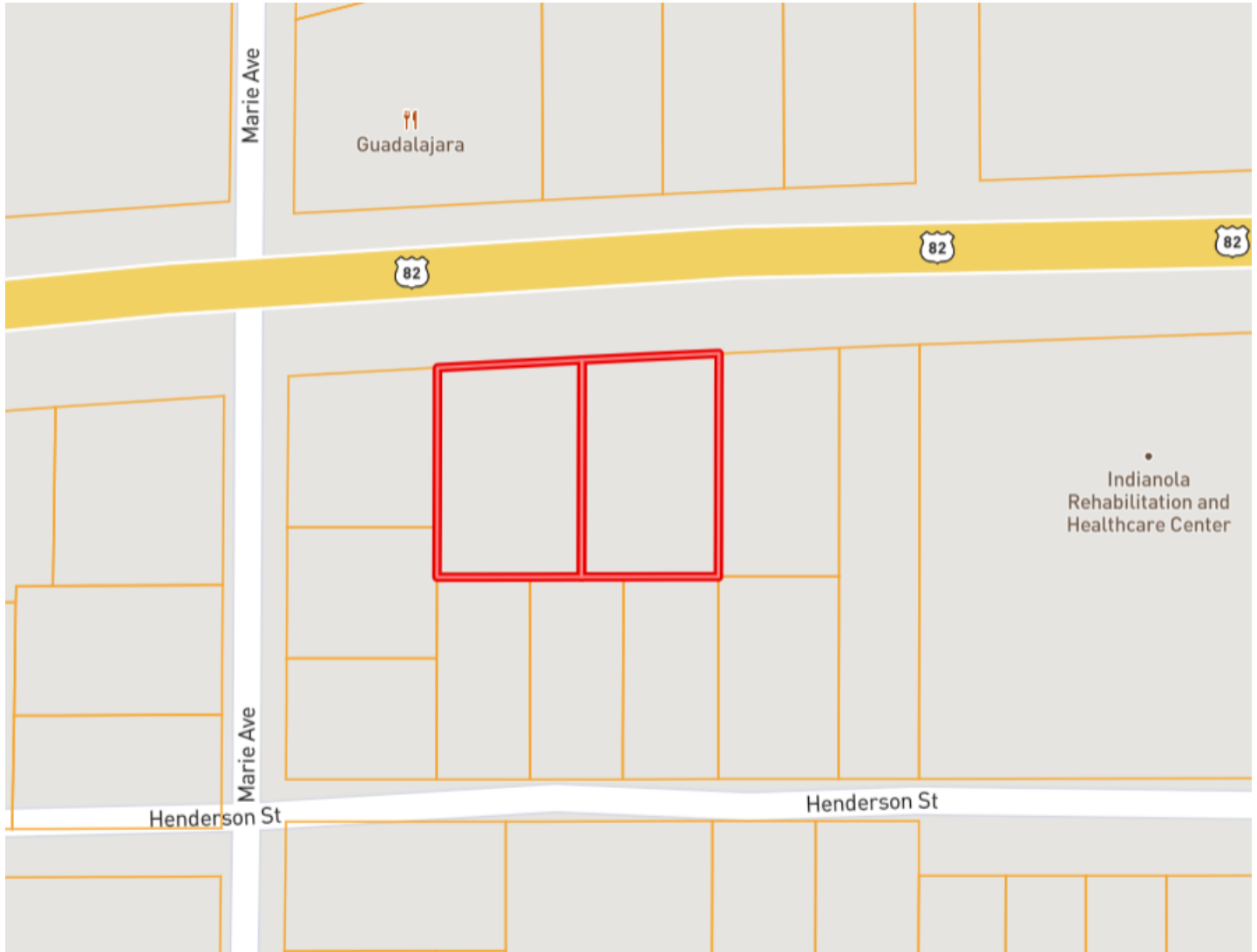
EMERSON LOVELACE, REALTOR®
Emerson@TomSmithLand.com
662.441.2500 office | 601.715.3302 cell



TomSmithLandandHomes.com

Information is believed to be accurate but not guaranteed.

OWNERSHIP MAP



EMERSON LOVELACE, REALTOR®
Emerson@TomSmithLand.com
662.441.2500 office | 601.715.3302 cell



TomSmithLandandHomes.com

Information is believed to be accurate but not guaranteed.

AERIAL MAP



[Click for Interactive Map](#)



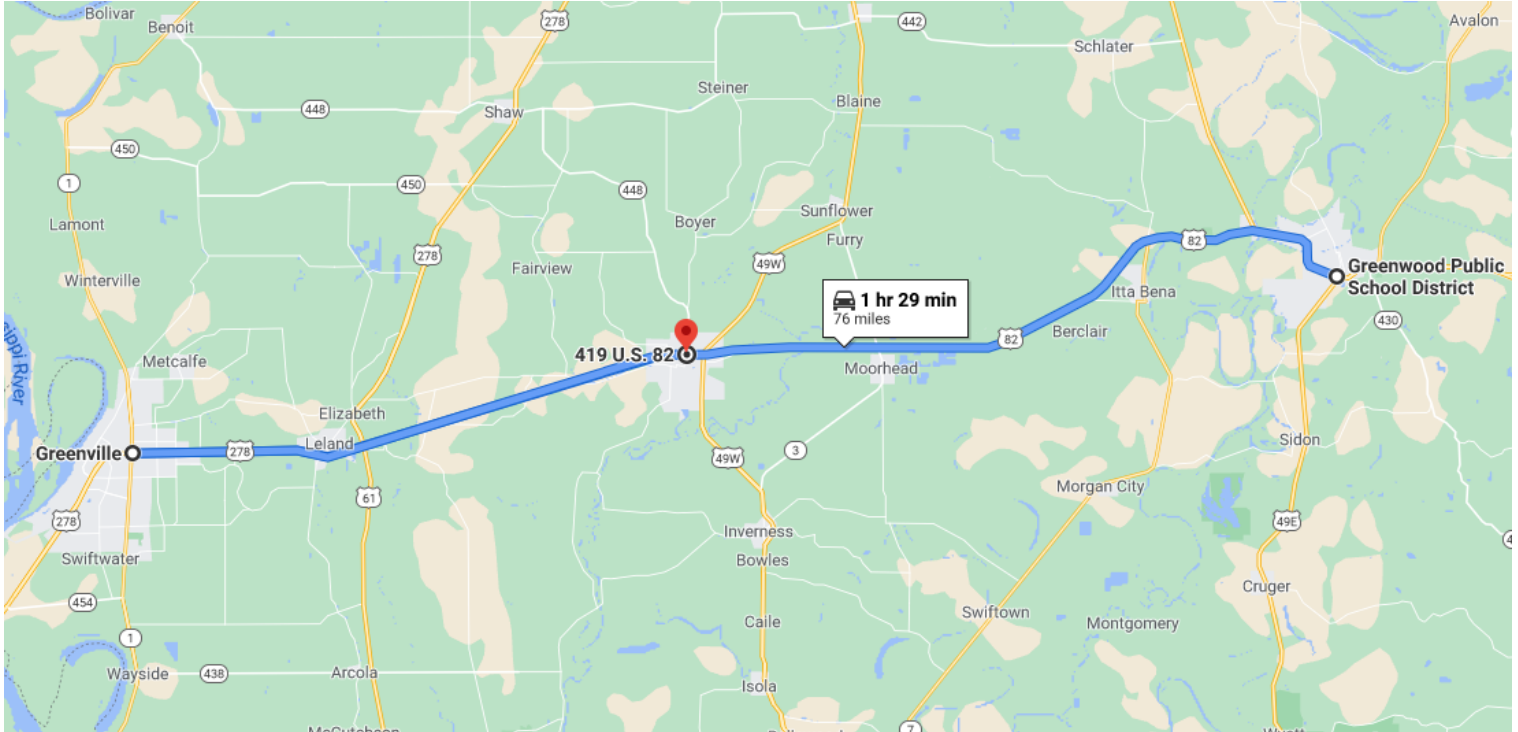
EMERSON LOVELACE, REALTOR®
Emerson@TomSmithLand.com
662.441.2500 office | 601.715.3302 cell



TomSmithLandandHomes.com

Information is believed to be accurate but not guaranteed.

DIRECTIONAL MAP



Directions from Greenville, MS: Travel east on Hwy 82 for approximately 23.4 miles and the destination is on the left.

Directions from Greenwood, MS: Travel west on Hwy 82 for approximately 30 miles and the destination is on the right.



Call me today!

EMERSON LOVELACE, REALTOR®
Emerson@TomSmithLand.com
662.441.2500 **office** | 601.715.3302 **cell**



TomSmithLandandHomes.com

Information is believed to be accurate but not guaranteed.