

# 55+/- Acres with Camp in Smith County, MS



**\$132,000**

If you are looking for an exceptional recreational property, then you have found what you are looking for with this 55+/- acre property in the famed Smith County, MS. Located a quarter mile from SCR 93 is a one bedroom, one bath cabin overlooking the 1+/- acre pond. Previously clear cut, the property is an excellent whitetail deer habitat. The pond is stocked with bass, bream, and a few crappie, offering exceptional summer fishing opportunities. Internal road system, food plots and stand locations are already in place. With a little TLC on the camp this will be a family recreational property that will be enjoyed for years to come. Call Clif Cannon to schedule a showing today!!

Directions from the Intersection of MS-35 and MS-18 in Raleigh, MS: Travel southeast on MS-18 for 4.4 miles. Turn right onto S Co Rd 93 and travel for 1 mile. Turn right onto the drive.



*call me today!*

**CLIF CANNON, REALTOR®**

Clif@TomSmithLand.com

601.990.5070 office | 601.565.1070 cell



2011-2020  
BEST  
BROKERAGES

**TomSmithLandandHomes.com**

Information is believed to be accurate but not guaranteed.





**CLIF CANNON**, REALTOR®  
 Clif@TomSmithLand.com  
 601.990.5070 office | 601.565.1070 cell



Expect More. Get More.

**TomSmithLandandHomes.com**

Information is believed to be accurate but not guaranteed.





Aerial Map



**CLIF CANNON**, REALTOR®  
Clif@TomSmithLand.com  
601.990.5070 office | 601.565.1070 cell



**TomSmithLandandHomes.com**

Information is believed to be accurate but not guaranteed.



## Flood Map



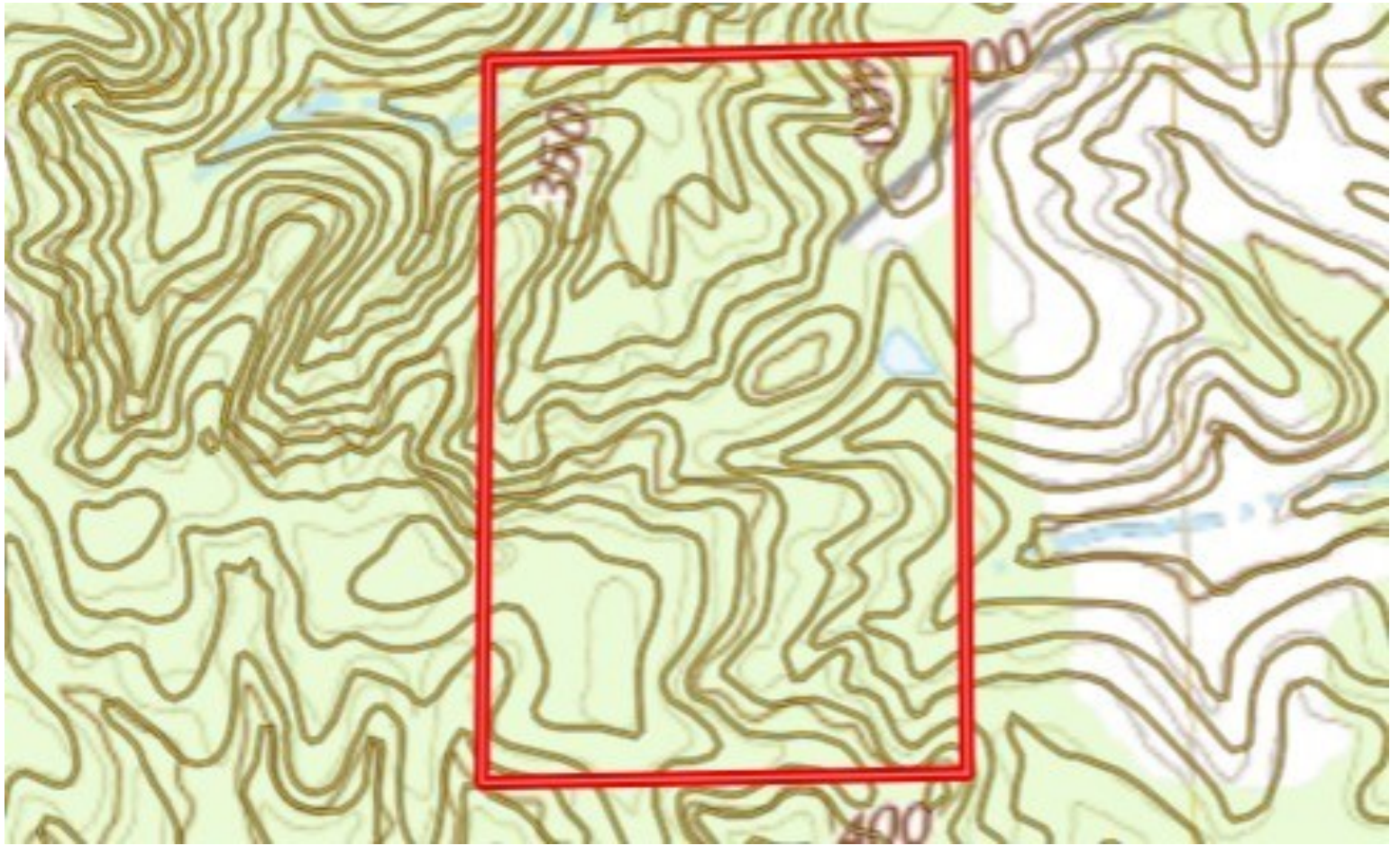
**CLIF CANNON**, REALTOR®  
Clif@TomSmithLand.com  
601.990.5070 office | 601.565.1070 cell



**TomSmithLandandHomes.com**

Information is believed to be accurate but not guaranteed.





Topographic Map



**CLIF CANNON**, REALTOR®  
Clif@TomSmithLand.com  
601.990.5070 office | 601.565.1070 cell



**TomSmithLandandHomes.com**

Information is believed to be accurate but not guaranteed.



## Ownership Map

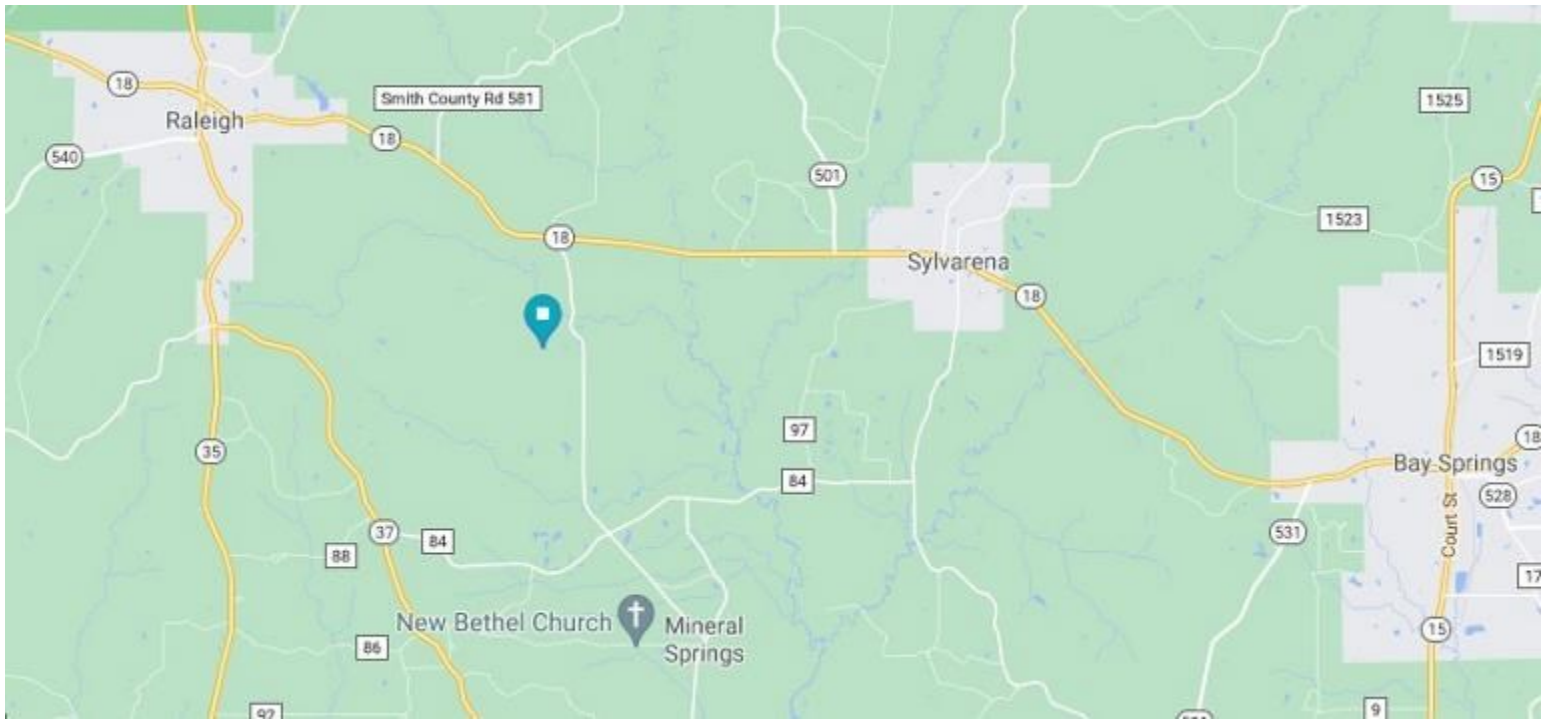


**CLIF CANNON**, REALTOR®  
Clif@TomSmithLand.com  
601.990.5070 office | 601.565.1070 cell



**TomSmithLandandHomes.com**

Information is believed to be accurate but not guaranteed.



## Directional Map

Directions from the Intersection of MS-35 and MS-18 in Raleigh, MS: Travel southeast on MS-18 for 4.4 miles. Turn right onto S Co Rd 93 and travel for 1 mile. Turn right onto the drive.



**CLIF CANNON**, REALTOR®  
Clif@TomSmithLand.com  
601.990.5070 office | 601.565.1070 cell



**TomSmithLandandHomes.com**

Information is believed to be accurate but not guaranteed.