

Spacious Home Situated on 10+/- Acres

Sunflower County, MS



\$315,000

64 Pratt Place Inverness, MS 38753

Looking for a home in Sunflower County, MS with room to roam? Come visit this 3,100+/- square foot, three bedroom, two bath home, situated on 10+/- wooded acres in Inverness. Hardwood floors are found throughout, along with updated bathrooms, and granite counters and stainless appliances in the kitchen. Enjoy your morning coffee in the sunroom before heading to the detached office to handle business. A covered patio, off the front living room, is great for grilling with friends and family. The wooded acreage offers plenty of room for outdoor recreation and gardening. For additional information and to schedule a private tour, call Emerson today!

Directions from Hwy 49 Inverness, MS: Travel south on Hwy 49 for approximately 1.4 miles, turn right onto Bowles Road. In one mile, turn left onto Mound Road, Pratt Place Road and the destination will be on the left.



Call me today!

EMERSON LOVELACE, REALTOR®
Emerson@TomSmithLand.com
662.441.2500 office | 601.715.3302 cell



TomSmithLandandHomes.com

Information is believed to be accurate but not guaranteed.



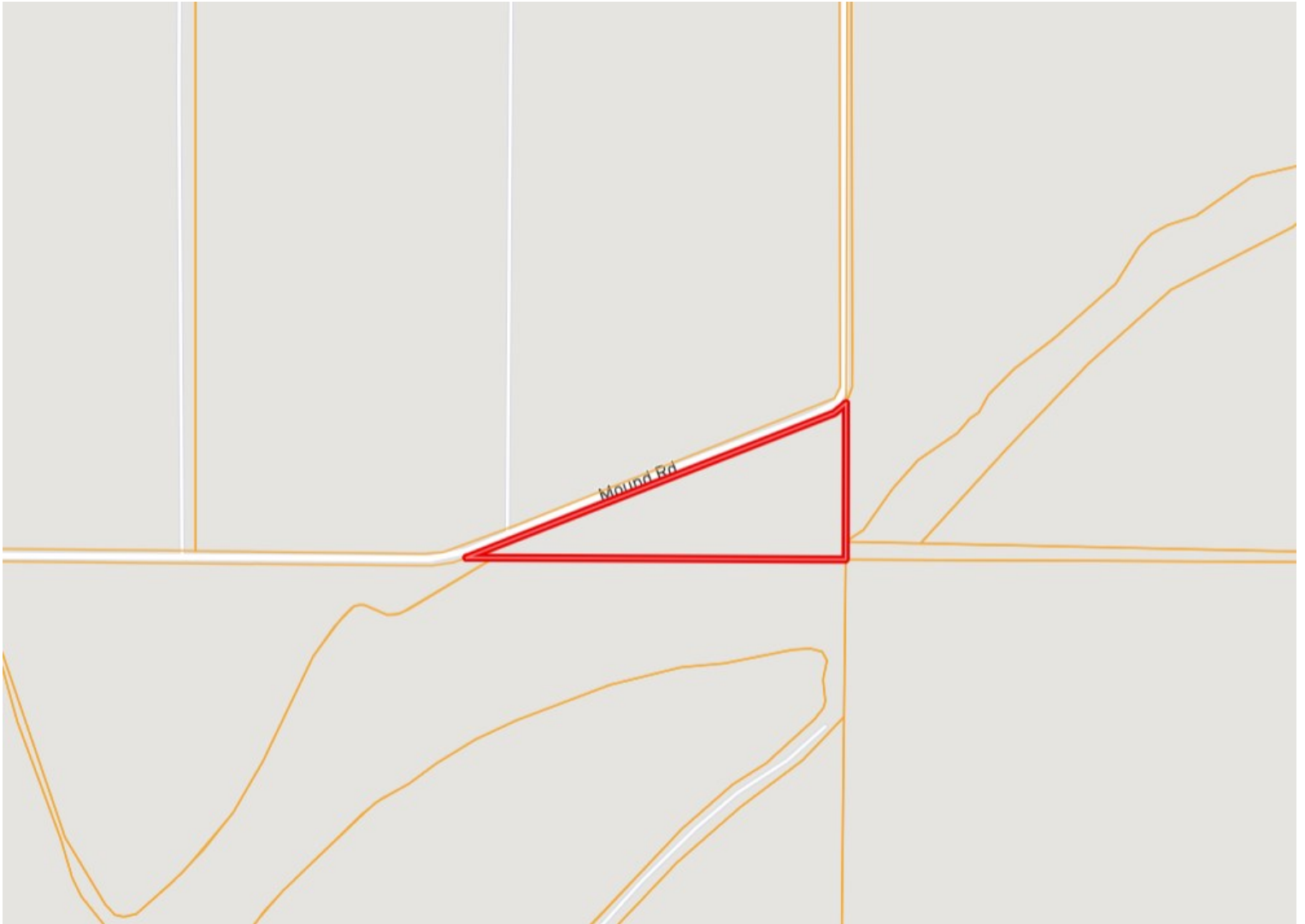
EMERSON LOVELACE, REALTOR®
Emerson@TomSmithLand.com
662.441.2500 office | 601.715.3302 cell



TomSmithLandandHomes.com

Information is believed to be accurate but not guaranteed.

OWNERSHIP MAP



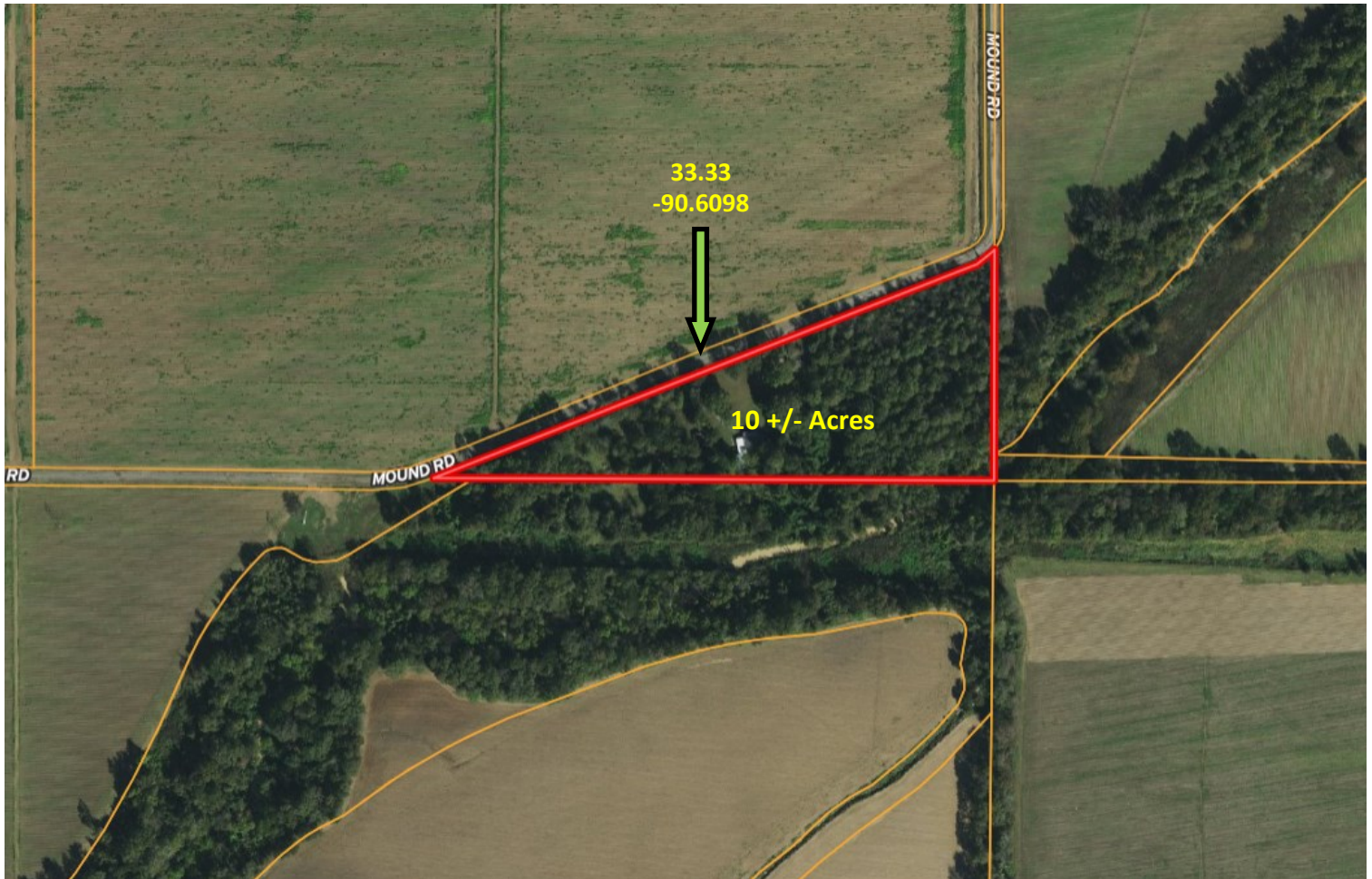
EMERSON LOVELACE, REALTOR®
Emerson@TomSmithLand.com
662.441.2500 office | 601.715.3302 cell



TomSmithLandandHomes.com

Information is believed to be accurate but not guaranteed.

AERIAL MAP



[Click for Interactive Map](#)



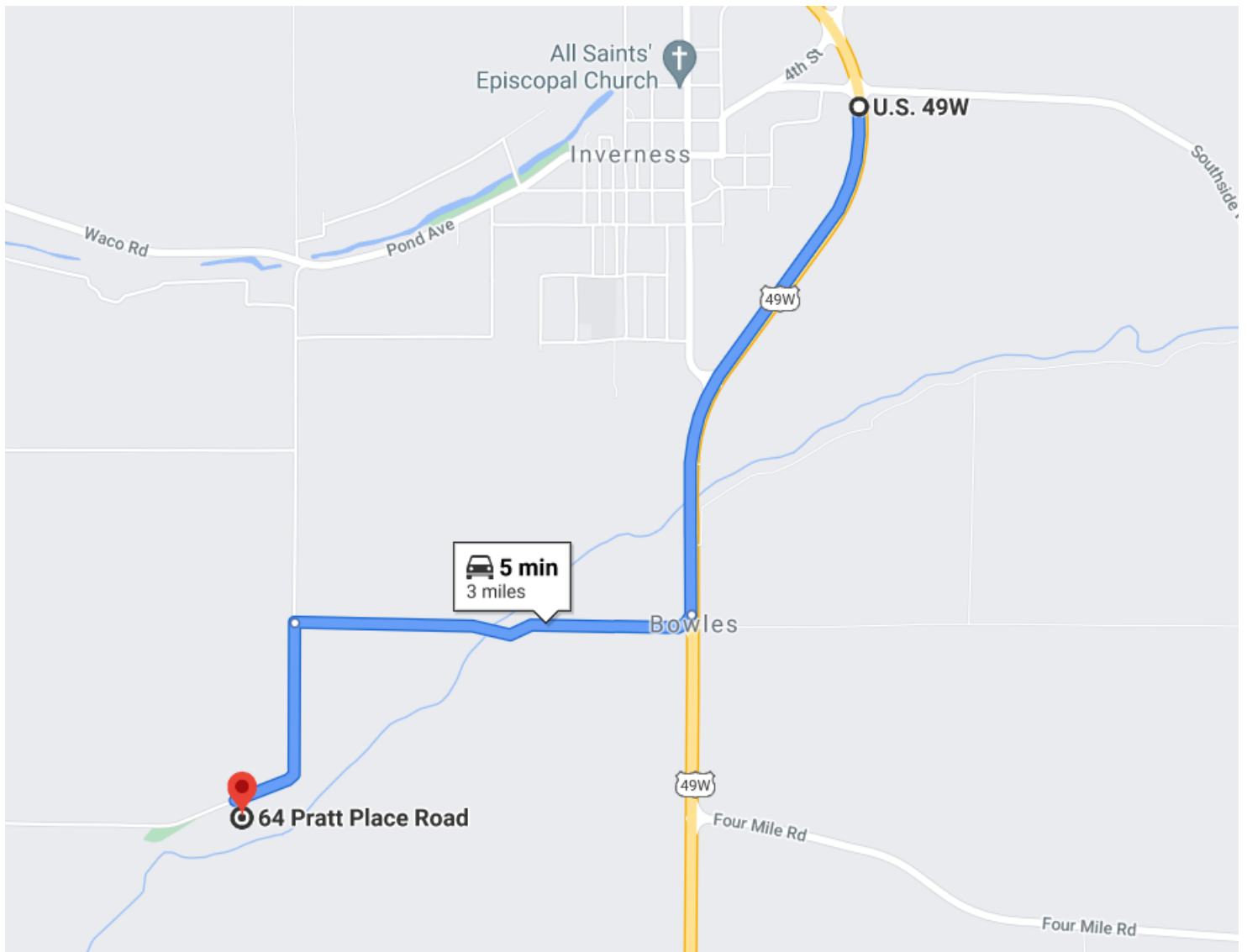
EMERSON LOVELACE, REALTOR®
Emerson@TomSmithLand.com
662.441.2500 office | 601.715.3302 cell



TomSmithLandandHomes.com

Information is believed to be accurate but not guaranteed.

DIRECTIONAL MAP



64 Pratt Place Road Inverness, MS 38753

Directions from Hwy 49 Inverness, MS: Travel south on Hwy 49 for approximately 1.4 miles, turn right onto Bowles Road. In one mile, turn left onto Mound Road and Pratt Place Road and the destination will be on the left. **Click for Google Map directions.**



EMERSON LOVELACE, REALTOR®
Emerson@TomSmithLand.com
662.441.2500 office | 601.715.3302 cell



TomSmithLandandHomes.com

Information is believed to be accurate but not guaranteed.