

Home on 4.725+/- Acres Lincoln County, MS



\$289,000



125 E Highland Drive Brookhaven, MS 39601

Come take a look at this home situated on 4.752+/- acres with a private gated entrance, in the Brookhaven city limits! The Lincoln County, MS property features a 3,000+/- sq ft home built in 2000 with four bedrooms and two and a half baths. There is a circle, paved driveway for a grand feel as you drive up to the home. If relaxing outdoors is your thing, the property offers a spacious yard to garden or let the kids play. You'll immediately notice the 10 foot ceilings, crown molding and arched walkways as you enter the home. An office and formal dining room are on each side of the front entrance. The spacious kitchen offers lots of storage and a wet bar, perfect for entertaining. The living room has a fireplace and access to the screened-in back porch for those summertime cookouts. The master bathroom has a whirlpool tub, separate shower, double vanity, and an oversized closet. Each bedroom has a private feel from the rest of the home. The laundry room is huge, with extra storage and two closets. A room off the kitchen is enclosed and can be used as a playroom, or exercise room. Call Trinity today to schedule a viewing!

Directions from Downtown Brookhaven, MS: Travel east on W Monticello Street for 1.4 miles. Turn right onto Highland Drive and travel 0.2 miles, the driveway will be on the right.



2011-2020
BEST
BROKERAGES

call me today!

TRINITY WEBB, REALTOR®
Trinity@TomSmithHomes.com
601.990.5070 office | 769.218.7860 cell



Expect More. Get More.

TomSmithLandandHomes.com

Information is believed to be accurate but not guaranteed.



2011-2020
NATIONAL
BEST
BROKERAGES

Call me today!

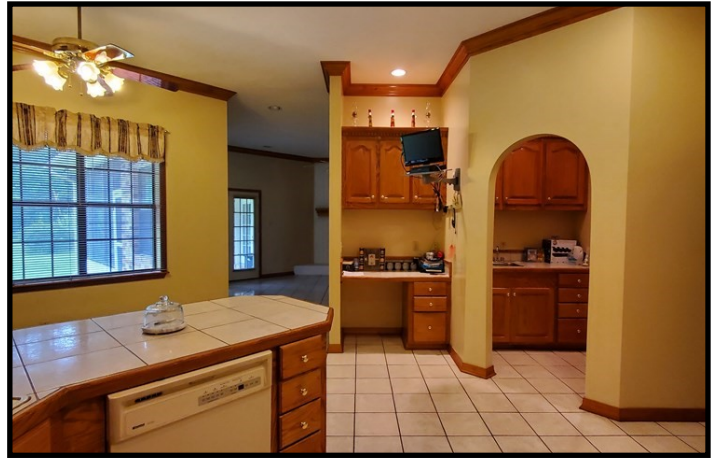
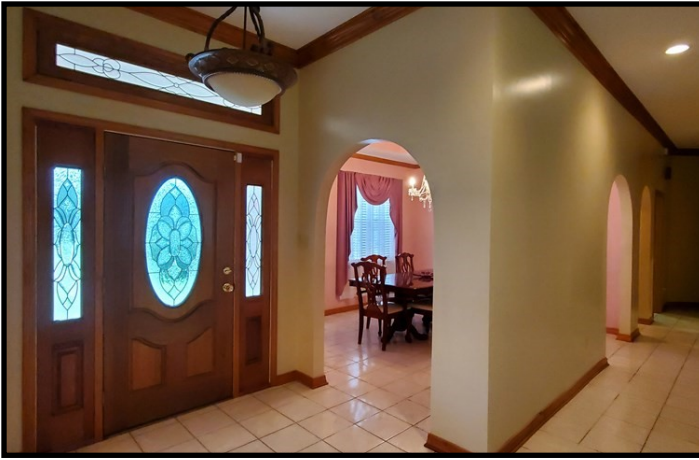
TRINITY WEBB, REALTOR®
Trinity@TomSmithHomes.com
601.990.5070 office | 769.218.7860 cell



Expect More. Get More.

TomSmithLandandHomes.com

Information is believed to be accurate but not guaranteed.



2011-2020
BEST
BROKERAGES

Call me today!

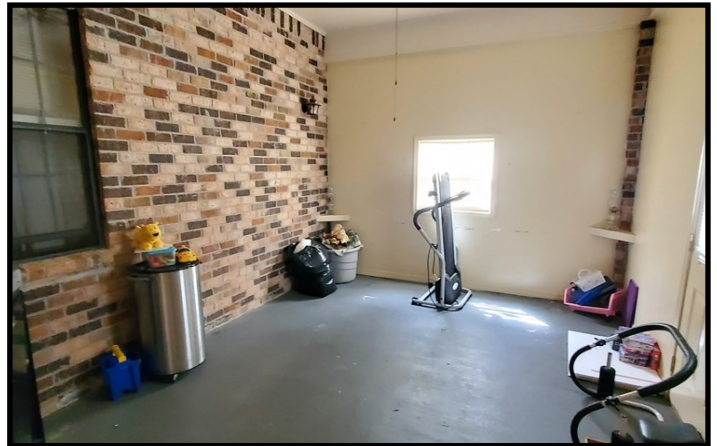
TRINITY WEBB, REALTOR®
Trinity@TomSmithHomes.com
601.990.5070 office | 769.218.7860 cell



Expect More. Get More.

TomSmithLandandHomes.com

Information is believed to be accurate but not guaranteed.



2011-2020
FRANCHISE
BEST
BROKERAGES

Call me today!

TRINITY WEBB, REALTOR®
Trinity@TomSmithHomes.com
601.990.5070 office | 769.218.7860 cell



TomSmithLandandHomes.com

Information is believed to be accurate but not guaranteed.



Aerial Map



2011-2020
BEST
BROKERAGES

Call me today!

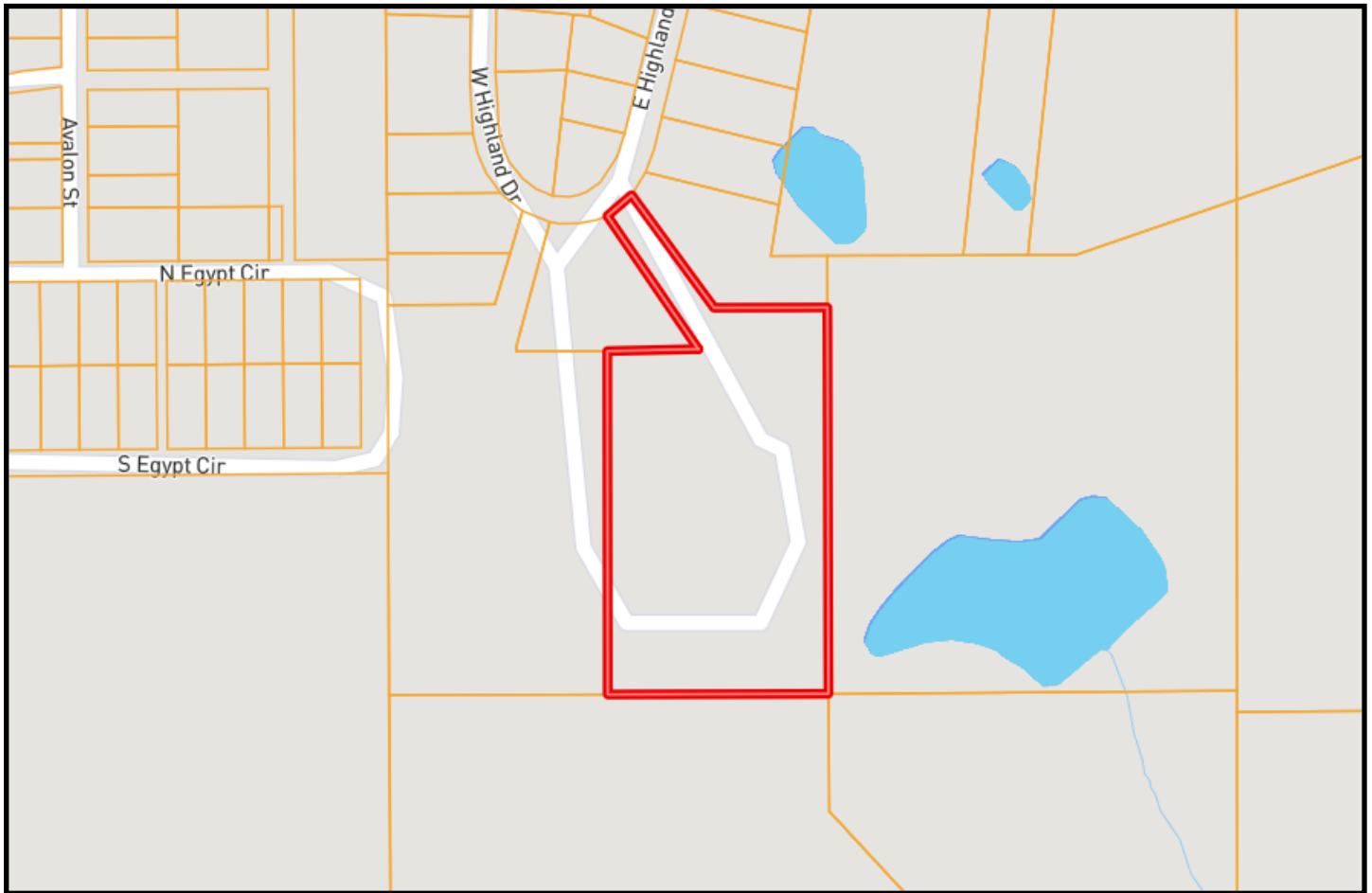
TRINITY WEBB, REALTOR®
Trinity@TomSmithHomes.com
601.990.5070 office | 769.218.7860 cell



Expect More. Get More.

TomSmithLandandHomes.com

Information is believed to be accurate but not guaranteed.



Ownership Map



2011-2020
BEST
BROKERAGES

call me today!

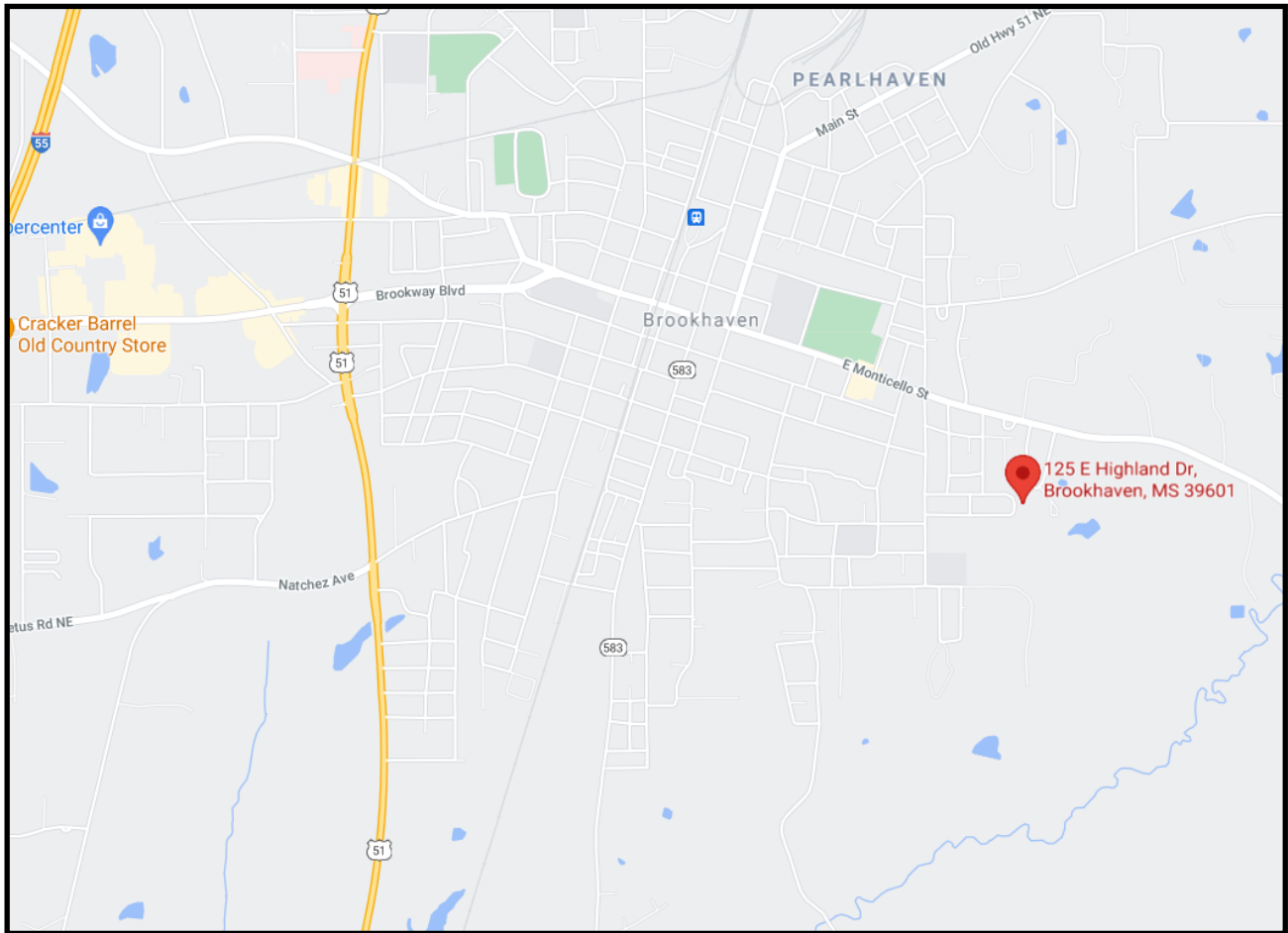
TRINITY WEBB, REALTOR®
Trinity@TomSmithHomes.com
601.990.5070 office | 769.218.7860 cell



Expect More. Get More.

TomSmithLandandHomes.com

Information is believed to be accurate but not guaranteed.



Directional Map

125 E Highland Drive Brookhaven, MS 39601



Directions from Downtown Brookhaven, MS: Travel east on W Monticello Street for 1.4 miles. Turn right onto Highland Drive and travel 0.2 miles, the driveway will be on the right.



2011-2020
BEST
BROKERAGES

call me today!

TRINITY WEBB, REALTOR®
Trinity@TomSmithHomes.com
601.990.5070 office | 769.218.7860 cell



Expect More. Get More.

TomSmithLandandHomes.com

Information is believed to be accurate but not guaranteed.