

24.5+/- Acre Recreational Tract Copiah County, MS



\$82,500

Check out this beautiful, 24.5+/- acre recreational tract in Copiah County, MS. The fenced property features mature pines, hardwoods, a live spring, and plenty of deer. Enjoy boating and fishing at Lake Lincoln State Park approximately 14 miles away. The property is perfectly located on White Road between Hazlehurst and Wesson for any other amenities you might need. Electricity and water are available nearby. Call Nicole today to schedule a viewing!

Directions from I-55 N in Hazlehurst, MS: Take exit 59 towards Martinsville. Travel right on County Farm Road for 0.9 miles. Turn left onto US -51 N. Travel 0.3 miles and turn right onto Monticello Road. Travel 6.9 miles and turn left onto McCardle Road. Travel 0.7 miles and take a slight left onto White Road. The property will be on the right after 1.1 miles. Look for the Tom Smith Land and Homes Sign.



LandReport
2010-2021
AMERICA'S
BEST
BROKERAGES

Call me today!

NICOLE NEWELL, REALTOR®
Nicole@TomSmithHomes.com
601.990.5070 office | 601.754.3766 cell



TomSmithLandandHomes.com

Information is believed to be accurate but not guaranteed.



Call me today!

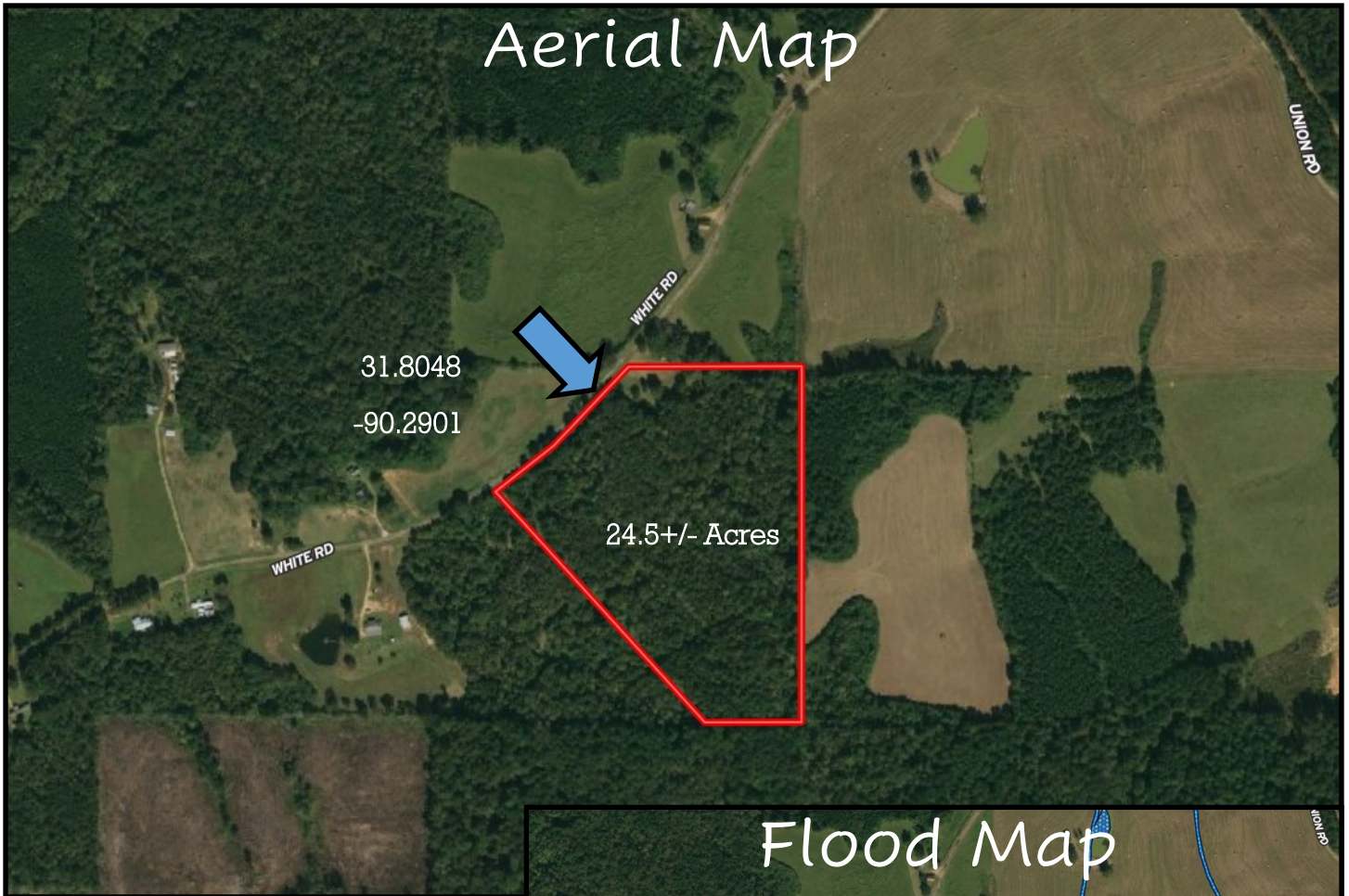
NICOLE NEWELL, REALTOR®
Nicole@TomSmithHomes.com
601.990.5070 office | 601.754.3766 cell



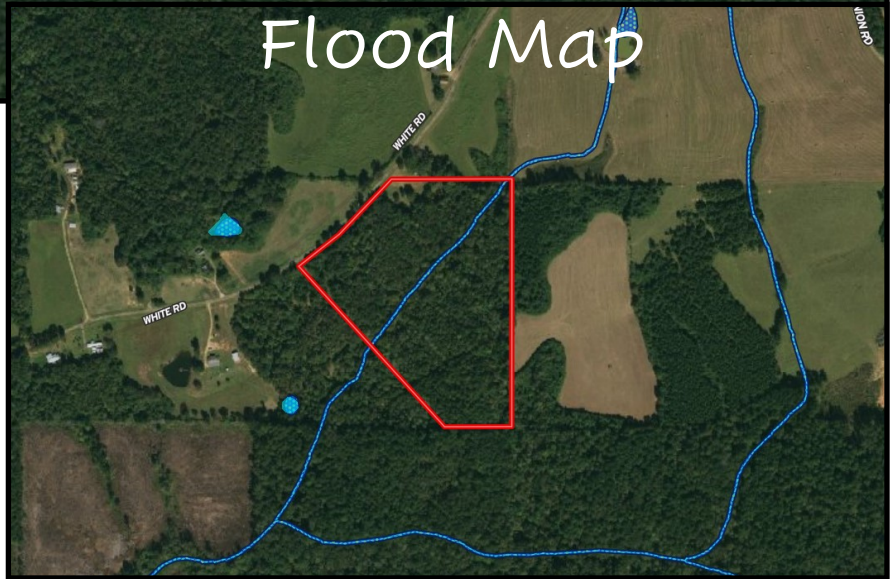
TomSmithLandandHomes.com

Information is believed to be accurate but not guaranteed.

Aerial Map



Flood Map



Call me today!

NICOLE NEWELL, REALTOR®
Nicole@TomSmithHomes.com
601.990.5070 office | 601.754.3766 cell

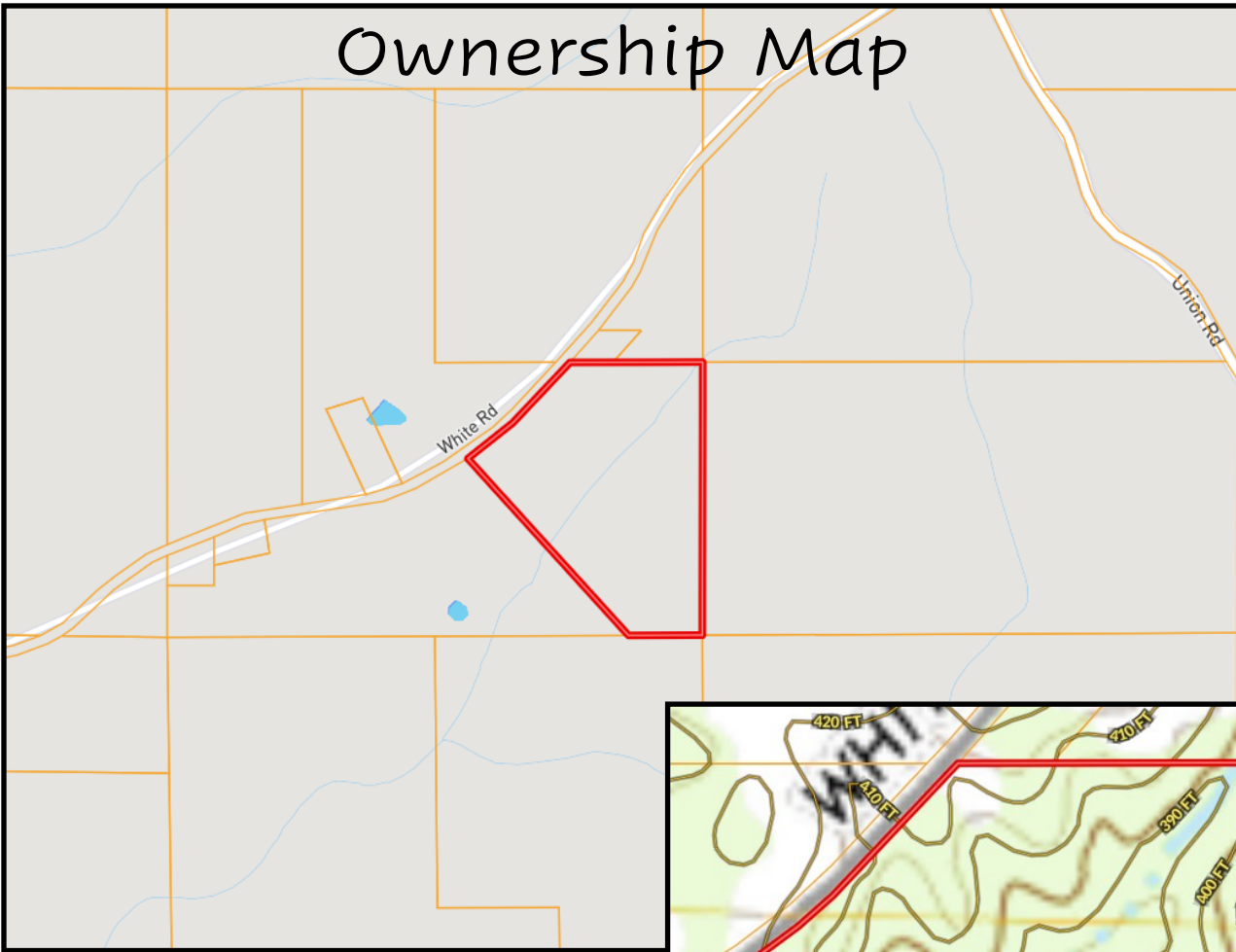


Expect More. Get More.

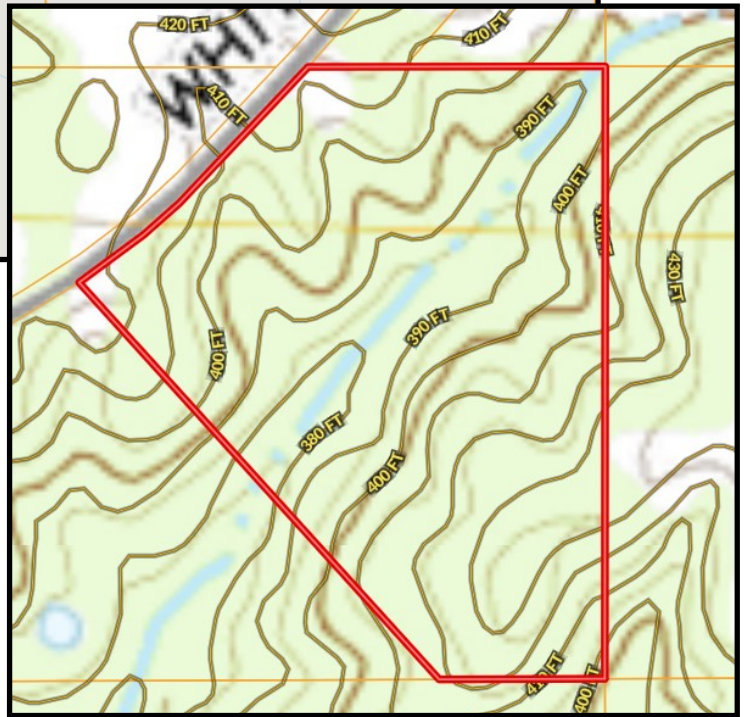
TomSmithLandandHomes.com

Information is believed to be accurate but not guaranteed.

Ownership Map



Topo Map



2010-2021
AMERICA'S
BEST
BROKERAGES

Call me today!

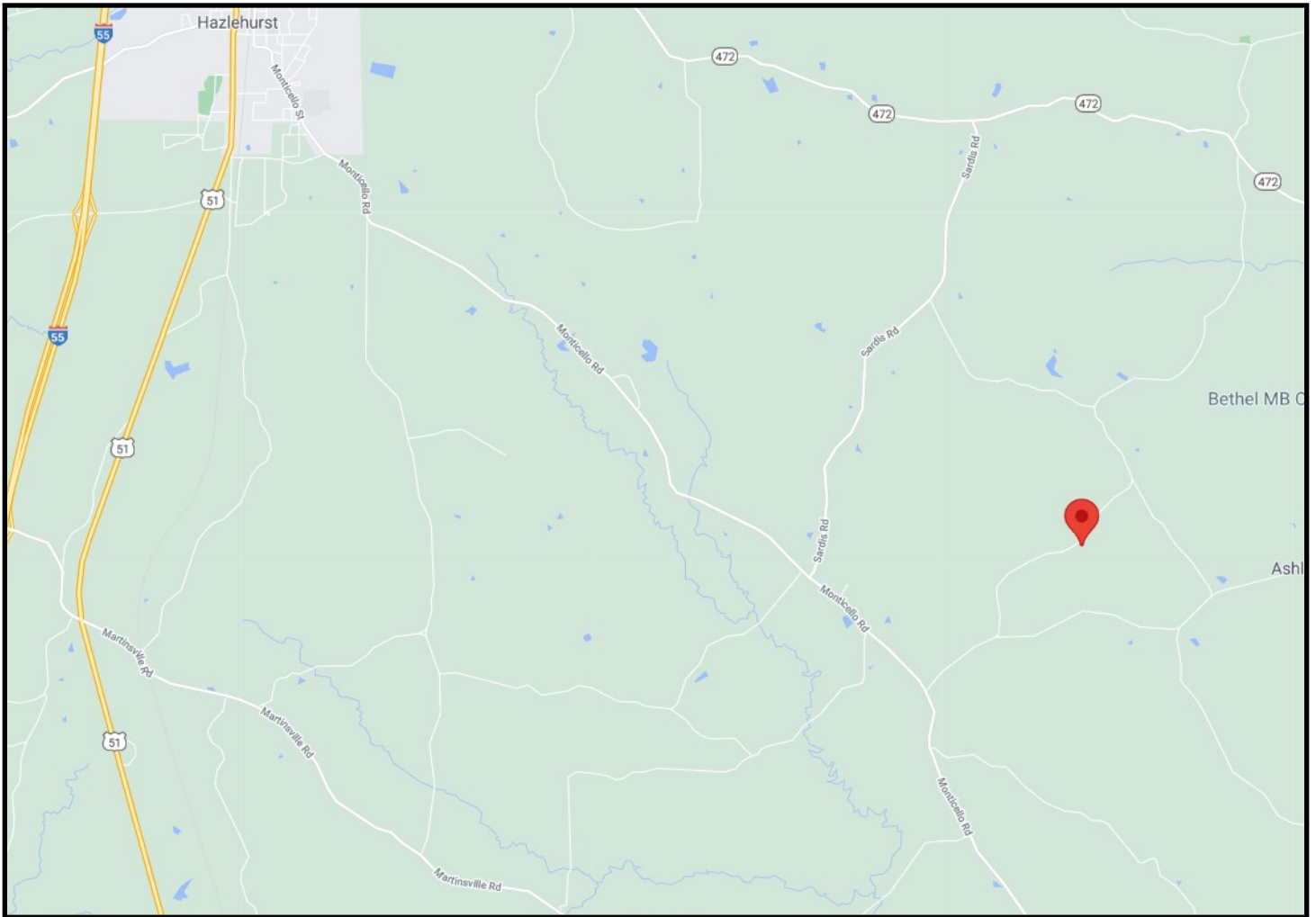
NICOLE NEWELL, REALTOR®
Nicole@TomSmithHomes.com
601.990.5070 office | 601.754.3766 cell



Expect More. Get More.

TomSmithLandandHomes.com

Information is believed to be accurate but not guaranteed.



Directional Map

Directions from I-55 N in Hazlehurst, MS: Take exit 59 towards Martinsville. Travel right on County Farm Road for 0.9 miles. Turn left onto US -51 N. Travel 0.3 miles and turn right onto Monticello Road. Travel 6.9 miles and turn left onto McCardle Road. Travel 0.7 miles and take a slight left onto White Road. The property will be on the right after 1.1 miles. Look for the Tom Smith Land and Homes Sign.



Call me today!

NICOLE NEWELL, REALTOR®
Nicole@TomSmithHomes.com
601.990.5070 office | 601.754.3766 cell



TomSmithLandandHomes.com

Information is believed to be accurate but not guaranteed.